

STATE OF ILLINOIS  
DEPARTMENT OF TRANSPORTATION

F.A.P. RTE.	SECTION	COUNTY	TOTAL SHEETS	SHEET NO.
344	545B-BR	COOK	30	1
SN 016-0427		ILLINOIS	CONTRACT NO. 62D31	

A \*30+2 = 32 TOTAL  
D-91-460-16

FOR INDEX OF SHEETS, SEE SHEET NO. 2

IMPROVEMENT IS LOCATED IN THE VILLAGE OF LEMONT

PROPOSED  
HIGHWAY PLANS

FAP 344: IL 83 /171 (ARCHER AVE.)  
OVER CAL SAG CHANNEL  
SECTION: 545B-BR  
BRIDGE REPAIRS  
COOK COUNTY

C-91-460-16

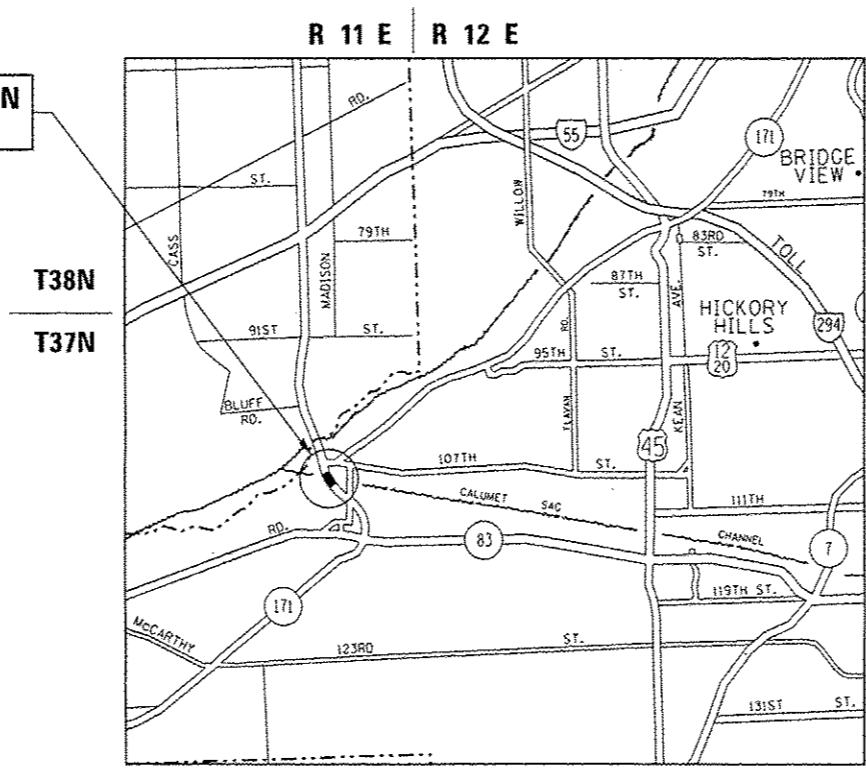
TRAFFIC DATA

2013 ADT = 30,100  
POSTED SPEED = 45 MPH

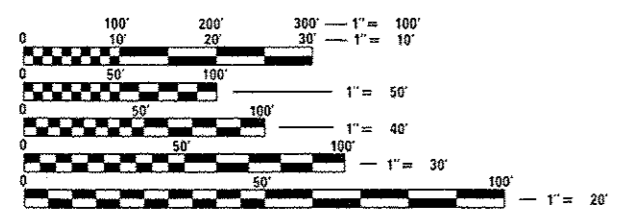


LOCATION OF SECTION INDICATED THIS: -

IMPROVEMENT LOCATION  
SN 016-0427



LEMONT TOWNSHIP



FULL SIZE PLANS HAVE BEEN PREPARED USING STANDARD ENGINEERING SCALES. REDUCED SIZED PLANS WILL NOT CONFORM TO STANDARD SCALES. IN MAKING MEASUREMENTS ON REDUCED PLANS, THE ABOVE SCALES MAY BE USED.

J.U.L.I.E.  
JOINT UTILITY LOCATION INFORMATION FOR EXCAVATION  
1-800-892-0123  
OR 811

PROJECT ENGINEER: J. ALAIN MIDY (847)-221-3056  
PROJECT MANAGER: ISSAM RAYYAN (847)-705-4178

GROSS LENGTH = 305.42 FT. = 0.058 MILE  
NET LENGTH = 305.42 FT. = 0.058 MILE

CONTRACT NO. 62D31

STATE OF ILLINOIS  
DEPARTMENT OF TRANSPORTATION

SUBMITTED 1/5 2017  
*Jan 27 2017*  
REGIONAL ENGINEER

*Jan 27 2017*  
ENGINEER OF DESIGN AND ENVIRONMENT

*Jan 27 2017*  
DIRECTOR OF PROGRAM DEVELOPMENT

PRINTED BY THE AUTHORITY  
OF THE STATE OF ILLINOIS

Revised 2-16-17

**INDEX OF SHEETS**

SHEET NO.	DESCRIPTION
1	COVER SHEET
2	INDEX OF SHEETS, STANDARDS, AND GENERAL NOTES
3	SUMMARY OF QUANTITIES
4-17	BRIDGE PLANS (SN 016-0427)
18-19	DETOUR PLANS
20-24	STAGING PLANS
25-26	FINAL PAVEMENT MARKING PLANS
26A	TRAFFIC CONTROL AND PROTECTION FOR SIDE ROADS, INTERSECTIONS, AND DRIVEWAYS (TC-10)
27	RAISED REFLECTIVE PAVEMENT MARKERS (SNOW-PLOW RESISTANT) (TC-11)
28	DISTRICT ONE TYPICAL PAVEMENT MARKINGS (TC-13)
29	TRAFFIC CONTROL AND PROTECTION AT TURN BAYS (TO REMAIN OPEN TO TRAFFIC) (TC-14)
29A	SHORT TERM PAVEMENT MARKINGS LETTERS AND SYMBOLS (TC-16)
30	ARTERIAL ROAD INFORMATION SIGN (TC-22)

**HIGHWAY STANDARDS**

STANDARD NO.	DESCRIPTION
701423-10	LANE CLOSURE, MULTILANE, WITH BARRIER, FOR SPEEDS 45 MPH TO 55 MPH
701426-09	LANE CLOSURE, MULTILANE, INTERMITTENT OR MOVING OPER., FOR SPEEDS ≥ 45 MPH
701606-10	URBAN LANE CLOSURE, MULTILANE, 2-W, WITH MOUNTABLE MEDIAN
701701-10	URBAN LANE CLOSURE, MULTILANE INTERSECTION
701801-06	SIDEWALK, CORNER OR CROSSWALK CLOSURE
701901-06	TRAFFIC CONTROL DEVICES
704001-08	TEMPORARY CONCRETE BARRIER

**GENERAL NOTES**

BEFORE STARTING ANY EXCAVATION, THE CONTRACTOR SHALL CALL J.U.L.I.E. AT (800) 892-0123 OR 811 FOR FIELD LOCATIONS OF BURIED ELECTRIC, TELEPHONE AND GAS UTILITIES. 48 HOUR NOTIFICATION IS REQUIRED.

THE CONTRACTOR SHALL COORDINATE CONSTRUCTION ACTIVITIES WITH UTILITY COMPANIES, AND THE VILLAGE OF LEMONT.

PLAN DIMENSIONS AND DETAILS RELATIVE TO EXISTING PLANS ARE SUBJECT TO NOMINAL CONSTRUCTION VARIATIONS. THE CONTRACTOR SHALL FIELD VERIFY EXISTING DIMENSIONS AND DETAILS AFFECTING NEW CONSTRUCTION AND MAKE NECESSARY APPROVED ADJUSTMENTS PRIOR TO CONSTRUCTION OR ORDERING OF MATERIALS. SUCH VARIATIONS SHALL NOT BE CAUSE FOR ADDITIONAL COMPENSATION FOR A CHANGE IN SCOPE OF THE WORK, HOWEVER, THE CONTRACTOR WILL BE PAID FOR THE QUANTITY ACTUALLY FURNISHED BASED AT THE UNIT PRICE BID FOR THE WORK.

THE CONTRACTOR WILL NOT BE ALLOWED TO SET UP A YARD OR FIELD OFFICE ON STATE PROPERTY WITHOUT WRITTEN PERMISSION FROM THE DEPARTMENT.

ALL DAMAGE TO EXISTING PAVEMENT MARKINGS OR RAISED REFLECTIVE PAVEMENT MARKERS OUTSIDE THE REMOVAL LINE SHOWN ON THE PLANS SHALL BE REPLACED AT NO ADDITIONAL COST TO THE DEPARTMENT.

THE CONTRACTOR SHALL CONTACT THE DISTRICT ONE TRAFFIC CONTROL SUPERVISOR AT (847)705-4470 A MINIMUM OF 72 HOURS IN ADVANCE OF BEGINNING WORK.

OIL PIPELINES ARE ATTACHED TO BOTH SIDES OF THE BRIDGE. CARE SHOULD BE TAKEN WHILE WORKING AROUND EXISTING PIPELINES.

REMOVAL AND REINSTALLATION OF THE PEDESTRIAN FENCE ALONG THE EAST SIDE OF THE SIDEWALK SHOULD BE INCIDENTAL TO THE IMPROVEMENT.

THE ENGINEER SHALL CONTACT ERIC CAMPOS, IDOT'S AREA TRAFFIC FIELD ENGINEER FOR WILL COUNTY, VIA EMAIL AT ERIC.CAMPOS@ILLINOIS.GOV OR AT (815)485-6475 A MINIMUM OF TWO (2) WEEKS PRIOR TO THE PLACEMENT OF PERMANENT PAVEMENT MARKINGS.

THESE PLANS HAVE BEEN PREPARED FROM NOTES RECEIVED FROM THE BUREAU OF MAINTENANCE.

THE CONTRACTOR SHALL BE REQUIRED TO PROVIDE ACCESS TO ABUTTING PROPERTY AT ALL TIMES DURING THE CONSTRUCTION OF THIS PROJECT.

DO NOT SCALE PLANS FOR CONSTRUCTION DIMENSIONS.

THE CONTRACTOR SHALL OBTAIN COAST GUARD APPROVAL FOR ANY WORK THAT MAY INTERFERE WITH NAVIGATIONAL OPERATIONS OF THE NAVIGABLE WATERS. A WORK PLAN SHALL BE PREPARED BY THE CONTRACTOR, REVIEWED AND APPROVED BY THE ENGINEER AND BE SUBMITTED BY THE ENGINEER TO THE COAST GUARD AT THE ADDRESS LISTED BELOW FOR APPROVAL.

BRIDGE ADMINISTRATOR  
US COAST GUARD  
NINTH COAST GUARD DISTRICT  
1240 E. NINTH ST  
CLEVELAND, OH 44199-2060

FOR ACCESS BELOW THE TRUSS, THE CONTRACTOR SHALL CONTACT THE HEAD DISTRICT ATTORNEY, MS. SUSAN MORAKALIS AT (312) 751-6557 FOR A PERMIT OR TEMPORARY EASEMENT.

FILE NAME :	USER NAME : pgrzanowski	DESIGNED -	REVISED -	<b>STATE OF ILLINOIS DEPARTMENT OF TRANSPORTATION</b>	<b>INDEX OF SHEETS, STATE STANDARDS AND GENERAL NOTES</b>	F.A.P. RTE.	SECTION	COUNTY	TOTAL SHEETS	SHEET NO.	
Default	PLLOT SCALE = 100.0000' / in.	CHECKED -	REVISED -			344	545B-BR	COOK	30	2	
	PLLOT DATE = 2/2/2017	DATE -	REVISED -			ILLINOIS FED. AID PROJECT					
						SCALE:	SHEET	OF	SHEETS	STA.	TO

△ Revised Sheet 2-16-17

URBAN 100% STATE

SUMMARY OF QUANTITIES				CONSTRUCTION TYPE CODE 0014				
CODE NO	ITEM	UNIT	TOTAL QUANTITIES	0014				
50102400	CONCRETE REMOVAL	CU YD	49.2	49.2				
50300255	CONCRETE SUPERSTRUCTURE	CU YD	49.2	49.2				
50800205	REINFORCEMENT BARS, EPOXY COATED	POUND	5330	5330				
50800515	BAR SPLICERS	EACH	68	68				
52000110	PREFORMED JOINT STRIP SEAL	FOOT	242	242				
67000400	ENGINEER'S FIELD OFFICE, TYPE A	CAL MO	9	9				
67100100	MOBILIZATION	L SUM	1	1				
70106800	CHANGEABLE MESSAGE SIGN	CAL MO	3	3				
70300904	PAVEMENT MARKING TAPE, TYPE IV 4"	FOOT	8173	8173				
70400100	TEMPORARY CONCRETE BARRIER	FOOT	1125	1125				
70400200	RELOCATE TEMPORARY CONCRETE BARRIER	FOOT	1125	1125				
70600250	IMPACT ATTENUATORS, TEMPORARY (NON-REDIRECTIVE), TEST LEVEL 3	EACH	2	2				
70600350	IMPACT ATTENUATORS, RELOCATE (NON-REDIRECTIVE), TEST LEVEL 3	EACH	2	2				
78008210	POLYUREA PAVEMENT MARKING TYPE I - LINE 4"	FOOT	6602	6602				
78100300	REPLACEMENT REFLECTOR	EACH	50	50				
78200011	BARRIER WALL REFLECTORS, TYPE C	EACH	110	110				

SUMMARY OF QUANTITIES				CONSTRUCTION TYPE CODE 0014				
CODE NO	ITEM	UNIT	TOTAL QUANTITIES	0014				
X0327980	PAVEMENT MARKING REMOVAL - WATER BLASTING	SQ FT	622	622				
X5870015	BRIDGE DECK CONCRETE SEALER	SQ FT	64946	64946				
X7010216	TRAFFIC CONTROL AND PROTECTION, (SPECIAL)	L SUM	1	1				
X7030005	TEMPORARY PAVEMENT MARKING REMOVAL	SQ FT	2725	2725				
Z0001905	STRUCTURAL STEEL REPAIR	POUND	3580	3580				
Z0030850	TEMPORARY INFORMATION SIGNING	SQ FT	51.4	51.4				
Z0073510	TEMPORARY TRAFFIC SIGNAL TIMING	EACH	6	6				

Z0073510 TEMPORARY TRAFFIC SIGNAL TIMING EACH 6 6

\*Specialty Item

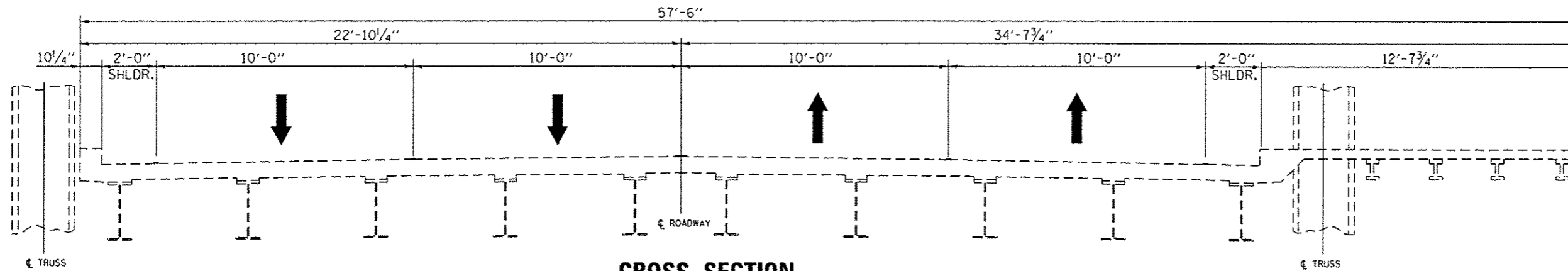
FILE NAME =	USER NAME =	DESIGNED -	REVISED -
PROJECT NO. =	PROJECT TITLE =	CHECKED -	REVISED -
PLOT SCALE =	PLOT DATE =	DATE -	REVISED -

STATE OF ILLINOIS  
DEPARTMENT OF TRANSPORTATION

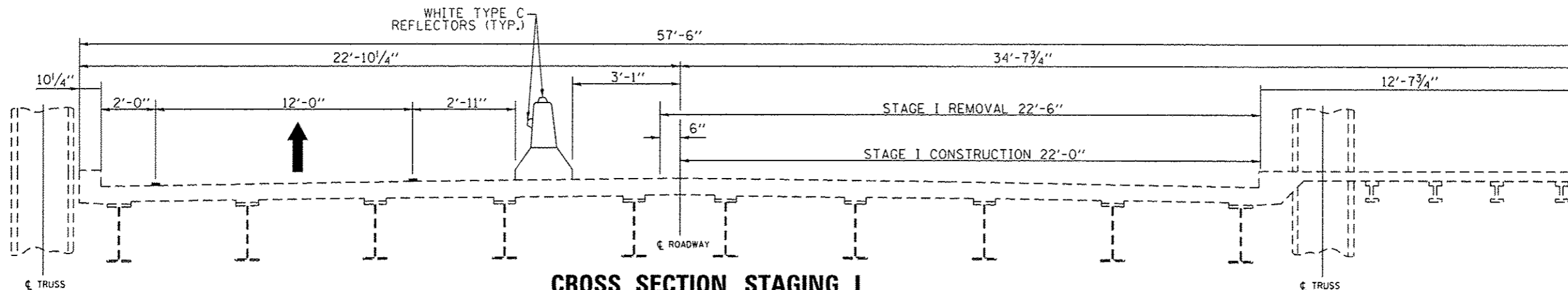
SUMMARY OF QUANTITIES

F.A.P. RTE.	SECTION	COUNTY	TOTAL SHEETS	SHEET NO.
344	545B-BR	COOK	30	3
FED. ROAD DIST. NO. 1 ILLINOIS FED. AID PROJECT			CONTRACT NO. 62031	

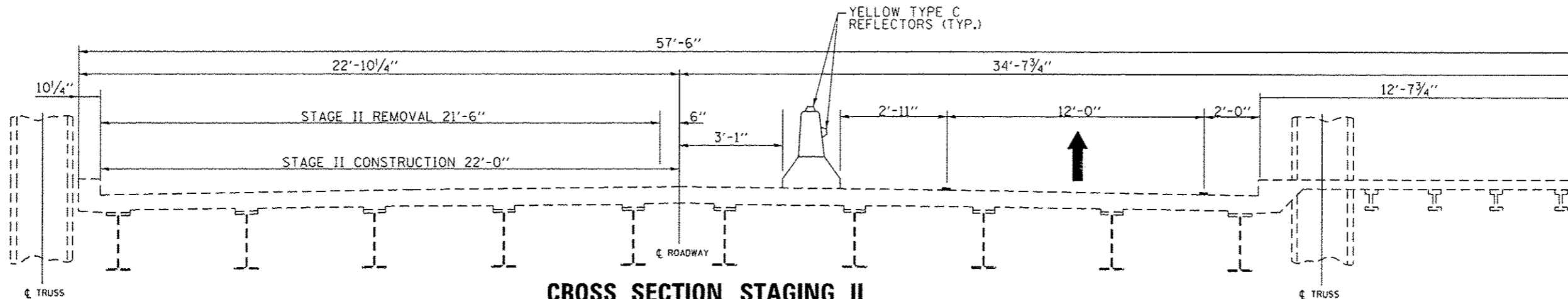
Rev 2-15-17



**CROSS SECTION**  
(LOOKING SOUTH)



**CROSS SECTION STAGING I**  
(LOOKING SOUTH)



**CROSS SECTION STAGING II**  
(LOOKING SOUTH)

FILE NAME: p:\11684EBID\INTEG\Illinois.gov\PW1007\Documents\1007 Offices\District 1\Projects\0146016\Drawings\Design\0146016-shr-plan.dgn	USER NAME: pyrasenowkirb	DESIGNED: -	REVISED: -	<b>STATE OF ILLINOIS DEPARTMENT OF TRANSPORTATION</b>	<b>TRAFFIC CONTROL CROSS SECTIONS IL 171 /83 OVER CAL SAG CHANNEL (SN 016-0427)</b>			F.A.P. RTE.:	SECTION	COUNTY	TOTAL SHEETS	SHEET NO.				
Default	PLOT SCALE = 100.0000 "/in.	CHECKED: -	REVISED: -		SCALE:	SHEET	OF	SHEETS	STA.	TO	STA.	344	545B-BR	COOK	30	20
	PLOT DATE = 2/7/2017	DATE: -	REVISED: -													
ILLINOIS FED. AID PROJECT																

Δ Revised Sheet 2-16-17

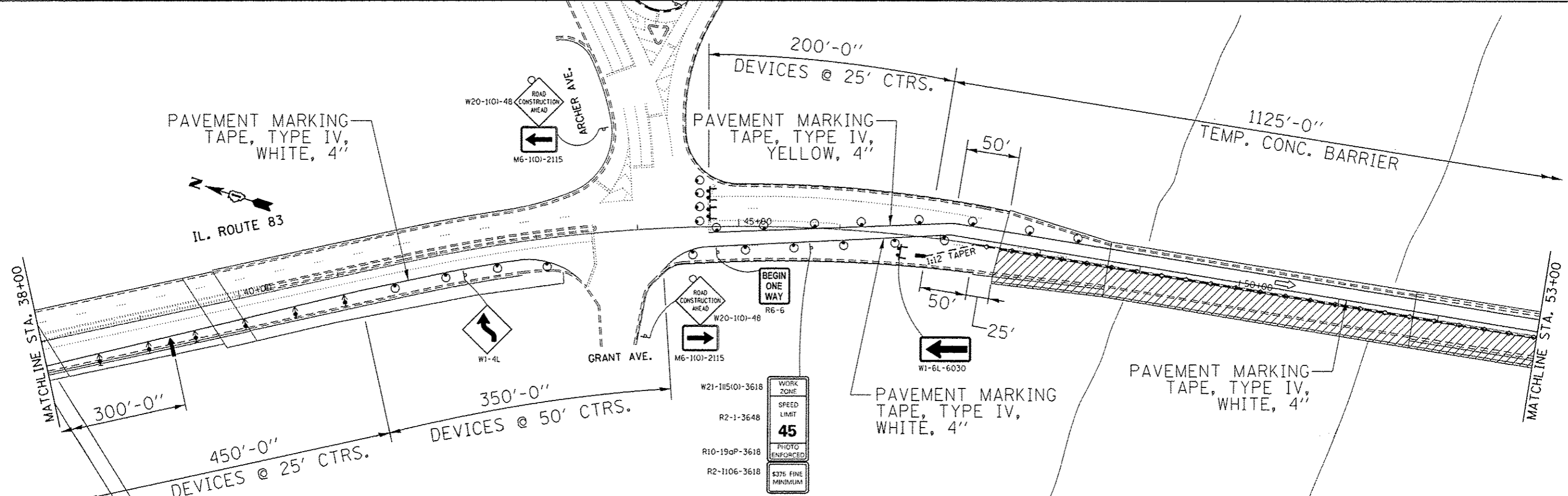
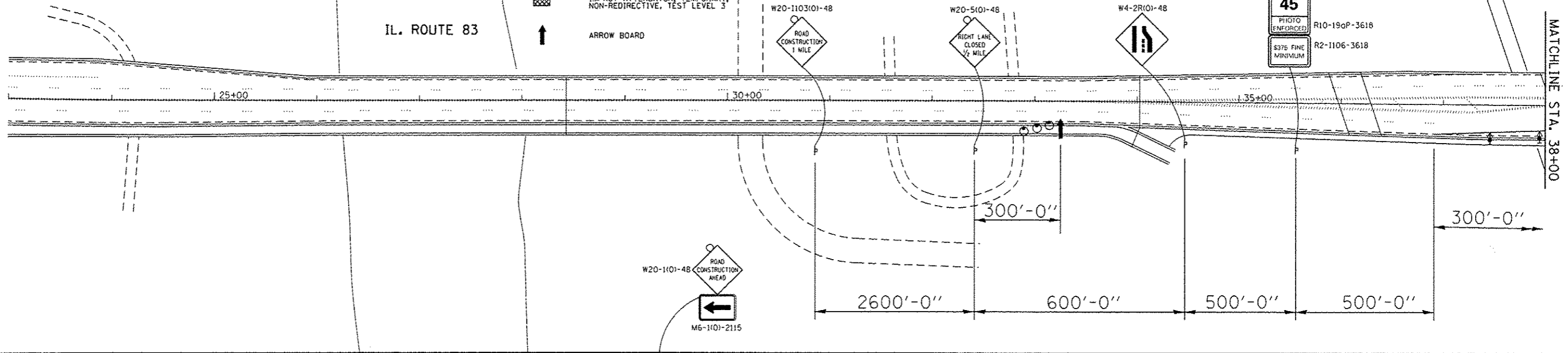
**LEGEND**

- ◇ MONO-DIRECTIONAL BARRIER WALL MARKERS, TYPE C (CRYSTAL) AT 25' CENTERS TOP AND SIDE
- ⊕ TYPE III BARRICADE
- DRUM WITH STEADY BURN MONO-DIRECTIONAL LIGHT
- ▨ WORK ZONE
- ▩ IMPACT ATTENUATOR, TEMPORARY, NON-REDIRECTIVE, TEST LEVEL 3
- ↑ ARROW BOARD
- TEMPORARY CONCRETE BARRIER
- ↑ DIRECTION INDICATOR BARRICADE WITH STEADY BURN MONODIRECTIONAL LIGHT @ 25' SPACING



IL. ROUTE 83

WORK ZONE	W21-115(O)-3618
SPEED LIMIT	R2-1-3648
<b>45</b>	
PHOTO ENFORCED	R10-19aP-3618
S375 FINE MINIMUM	R2-1106-3618



FILE NAME :	USER NAME :	DESIGNED :	REVISED :
per\IL084EBIDINTEG\Illinois.gov\PIW00T\Documents\DOT Offices\District 1\Projects\0146\0146\Drawings\Design\0146016-ht-plan.dgn	pyznowski	-	-
	PLOT SCALE = 100.0000' / in.	CHECKED :	REVISED :
	PLOT DATE = 2/7/2017	DATE :	REVISED :

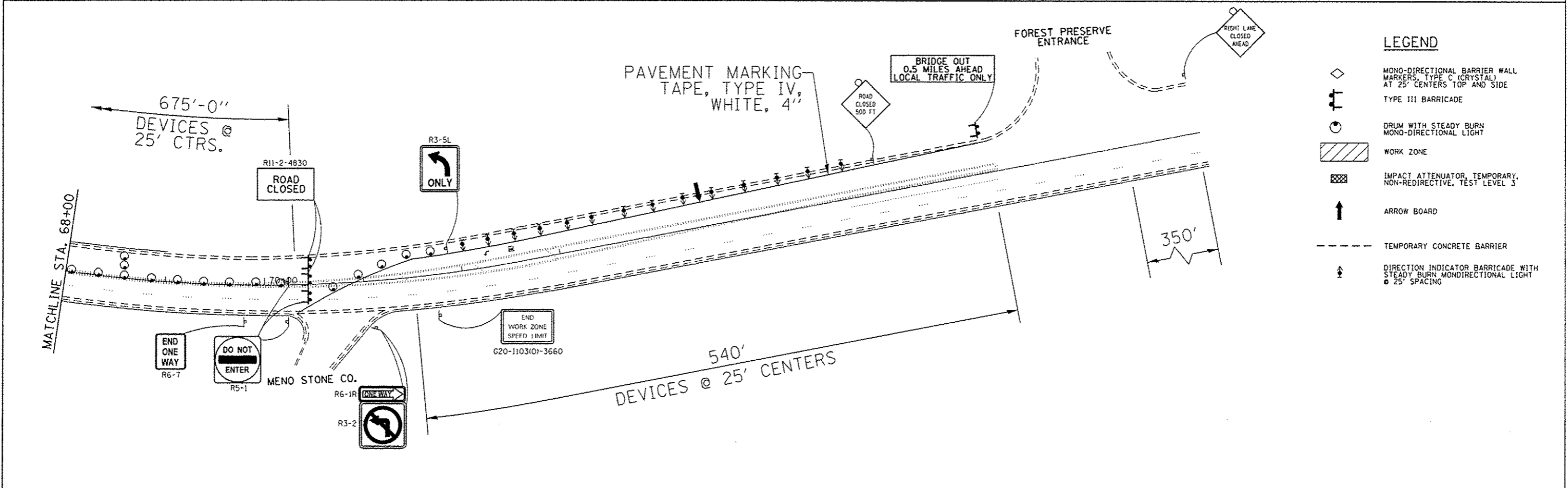
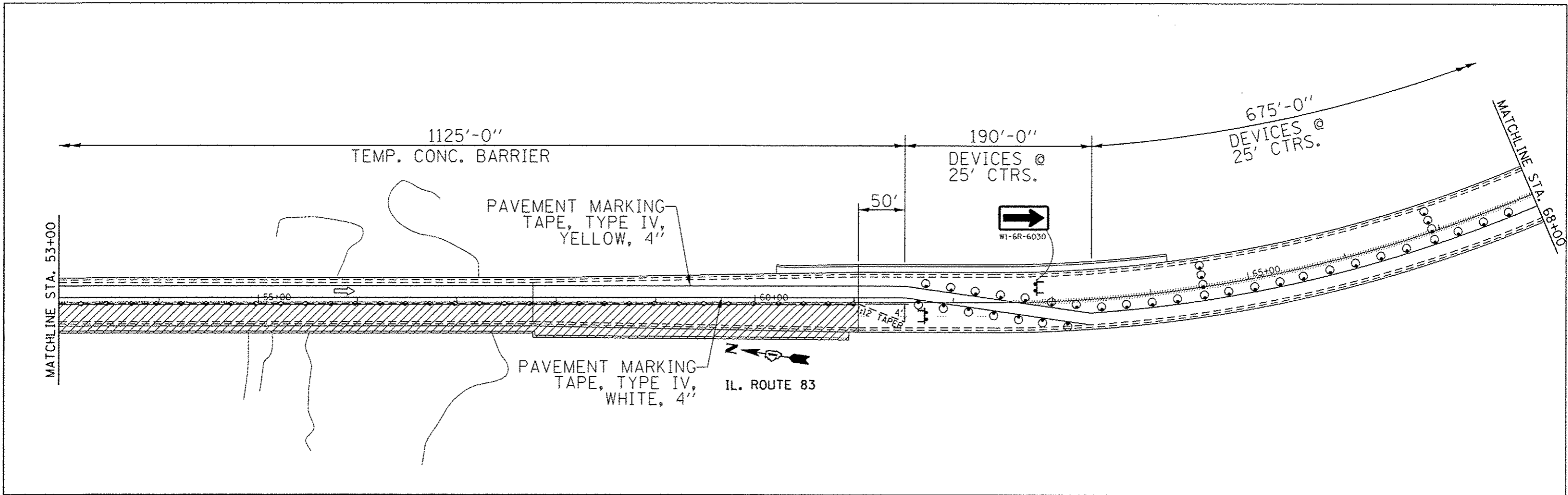
**STATE OF ILLINOIS  
DEPARTMENT OF TRANSPORTATION**

**IL. ROUTE 171 / 83 (ARCHER AVE.) OVER CAL-SAG CHANNEL  
STAGE I TRAFFIC CONTROL AND PROTECTION PLAN**

F.A.P. RTE.	SECTION	COUNTY	TOTAL SHEETS	SHEET NO.
344	545B-BR	COOK	30	21
			CONTRACT NO. 62D31	
ILLINOIS FED. AID PROJECT				

SCALE: = SHEET OF SHEETS STA. TO STA.

*A Revised Sheet 2-16-17*



**LEGEND**

- ◇ MONO-DIRECTIONAL BARRIER WALL MARKERS, TYPE C (CRYSTAL) AT 25' CENTERS TOP AND SIDE
- ≡ TYPE III BARRICADE
- DRUM WITH STEADY BURN MONO-DIRECTIONAL LIGHT
- ▨ WORK ZONE
- ▤ IMPACT ATTENUATOR, TEMPORARY, NON-REDIRECTIVE, TEST LEVEL 3
- ↑ ARROW BOARD
- - - TEMPORARY CONCRETE BARRIER
- ⬇️ DIRECTION INDICATOR BARRICADE WITH STEADY BURN MONODIRECTIONAL LIGHT @ 25' SPACING

FILE NAME:	USER NAME = pyzhenovskirb	DESIGNED -	REVISED -
pw:\IL084EB\INTEG\Illinois.gov\PIW007\Documents\1001 Offices\District 1\Projects\14601\Design\014601G-sht-plan.dgn		CHECKED -	REVISED -
Default		DATE -	REVISED -

**STATE OF ILLINOIS  
DEPARTMENT OF TRANSPORTATION**

**IL. ROUTE 171 /83 (ARCHER AVE.) OVER CAL-SAG CHANNEL  
STAGE I TRAFFIC CONTROL AND PROTECTION PLAN**

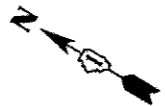
F.A.P. RTE.	SECTION	COUNTY	TOTAL SHEETS	SHEET NO.
344	545B-BR	COOK	30	22
				CONTRACT NO. 62D31
ILLINOIS FED. AID PROJECT				

SCALE: = SHEET OF SHEETS STA. TO STA.

△ Revised Sheet 2-16-17

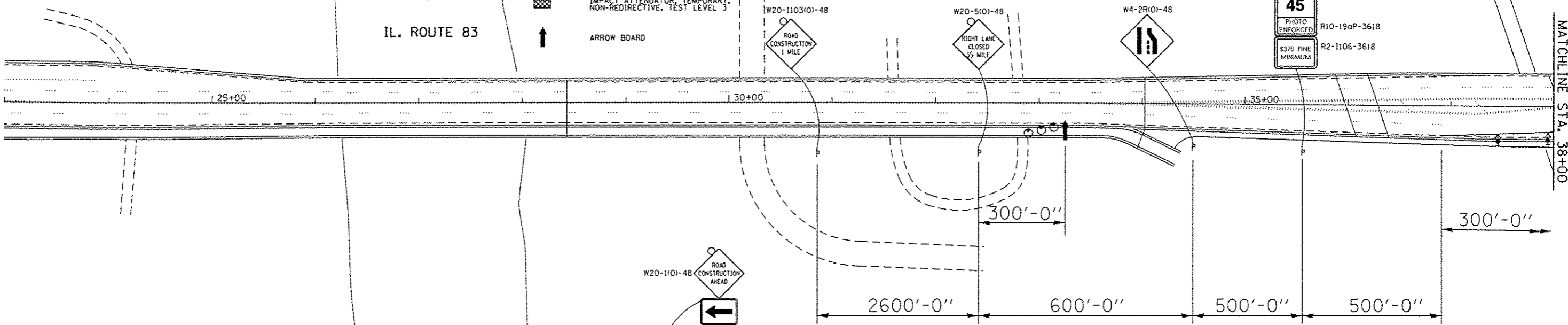
**LEGEND**

- ◇ MONO-DIRECTIONAL BARRIER WALL MARKERS, TYPE C (CRYSTAL) AT 25' CENTERS TOP AND SIDE
- ⊣ TYPE III BARRICADE
- DRUM WITH STEADY BURN MONO-DIRECTIONAL LIGHT
- ▨ WORK ZONE
- ▩ IMPACT ATTENUATOR, TEMPORARY, NON-REDIRECTIVE, TEST LEVEL 3
- ↑ ARROW BOARD
- TEMPORARY CONCRETE BARRIER
- ⬆ DIRECTION INDICATOR BARRICADE WITH STEADY BURN MONODIRECTIONAL LIGHT @ 25' SPACING



IL. ROUTE 83

WORK ZONE	W21-115(O)-3618
SPEED LIMIT	R2-1-3648
<b>45</b>	
PHOTO ENFORCED	R10-19aP-3618
S375 FINE MINIMUM	R2-1106-3618

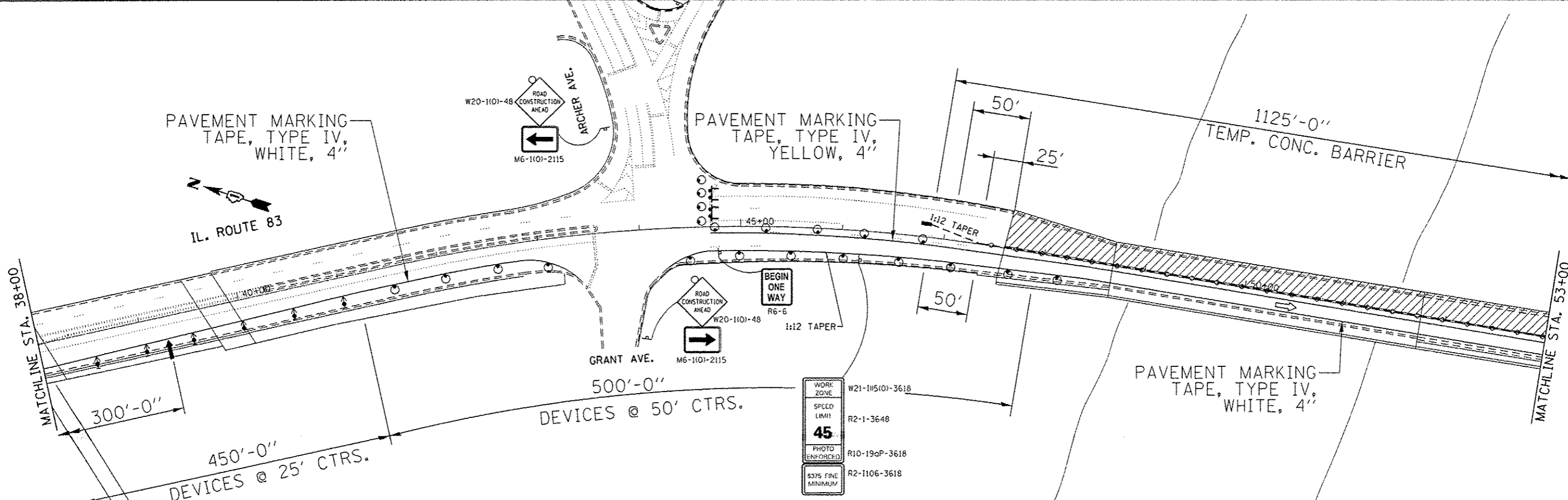


PAVEMENT MARKING TAPE, TYPE IV, WHITE, 4"



IL. ROUTE 83

PAVEMENT MARKING TAPE, TYPE IV, YELLOW, 4"

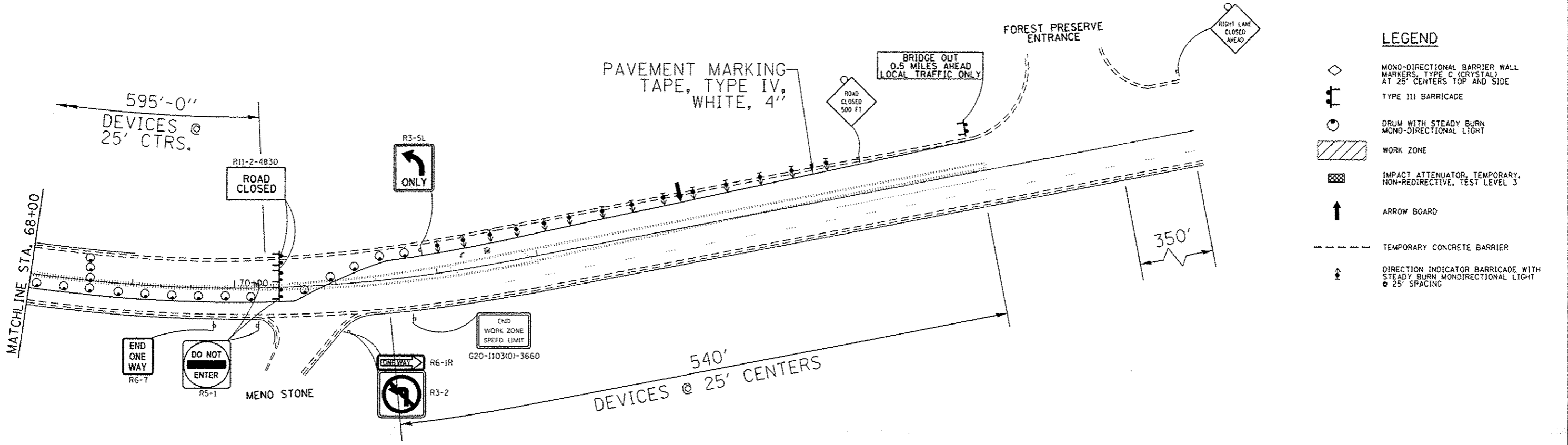
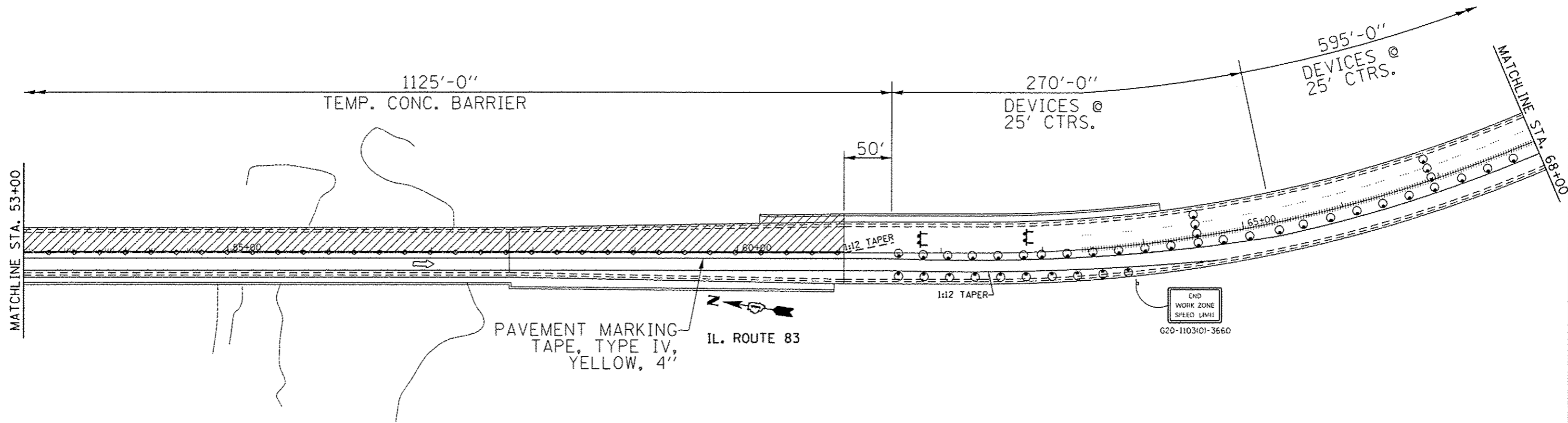


WORK ZONE	W21-115(O)-3618
SPEED LIMIT	R2-1-3648
<b>45</b>	
PHOTO ENFORCED	R10-19aP-3618
S375 FINE MINIMUM	R2-1106-3618

FILE NAME	USER NAME = pgrzono-shrb	DESIGNED -	REVISED -	<b>STATE OF ILLINOIS DEPARTMENT OF TRANSPORTATION</b>	<b>IL. ROUTE 171/83 (ARCHER AVE.) OVER CAL-SAG CHANNEL STAGE II TRAFFIC CONTROL AND PROTECTION PLAN</b>	F.A.P. RTE.	SECTION	COUNTY	TOTAL SHEETS	SHEET NO.	
PROJECT NO.	PROJECT NAME	CHECKED -	REVISED -			344	545B-BR	COOK	30	23	
PLOT SCALE = 1/8" = 100'-0"	DATE	DATE	DATE			CONTRACT NO. 62D31					
PLOT DATE = 2/7/2017						ILLINOIS FED. AID PROJECT					

Revised Sheet 2-16-17





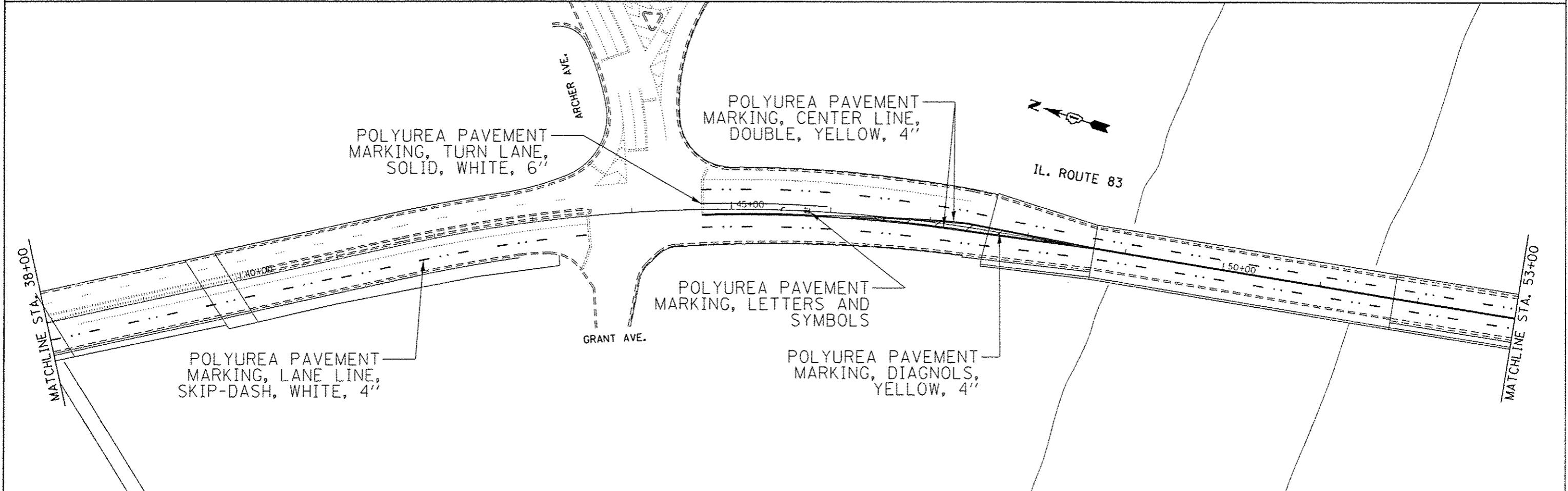
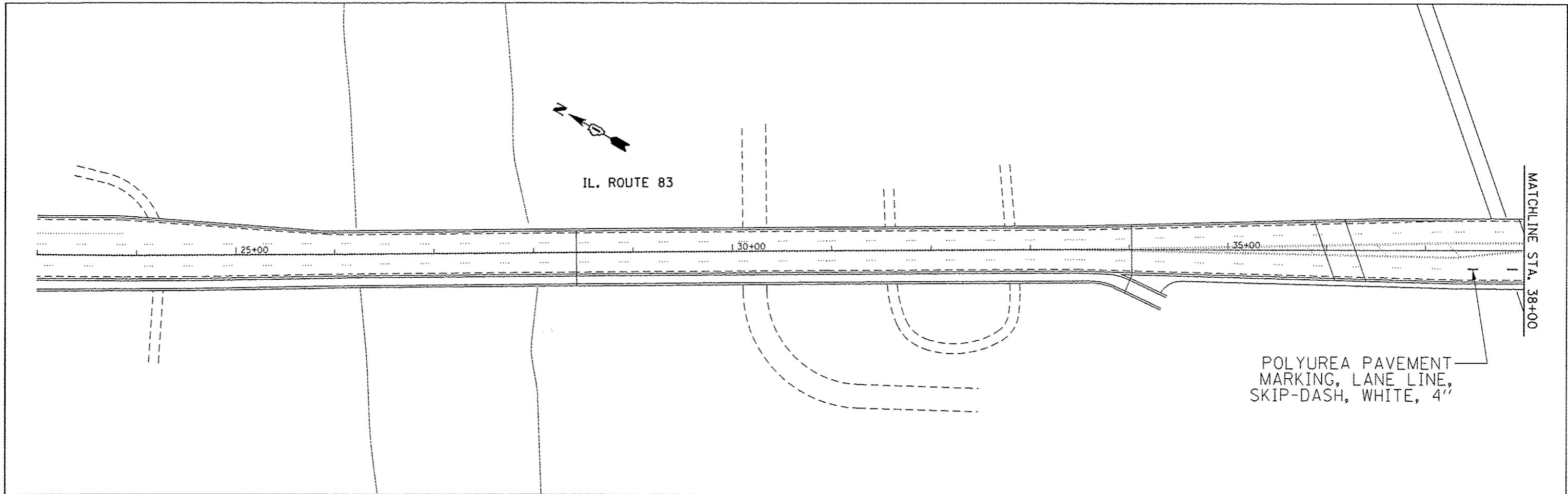
**LEGEND**

- ◇ MONO-DIRECTIONAL BARRIER WALL MARKERS, TYPE C (CRYSTAL) AT 25' CENTERS TOP AND SIDE
- ⊥ TYPE III BARRICADE
- DRUM WITH STEADY BURN MONO-DIRECTIONAL LIGHT
- ▨ WORK ZONE
- ▩ IMPACT ATTENUATOR, TEMPORARY, NON-REDIRECTIVE, TEST LEVEL 3
- ↑ ARROW BOARD
- TEMPORARY CONCRETE BARRIER
- ⬆ DIRECTION INDICATOR BARRICADE WITH STEADY BURN MONODIRECTIONAL LIGHT @ 25' SPACING

FILE NAME =	USER NAME = pgrzanowksrb	DESIGNED -	REVISED -	<b>STATE OF ILLINOIS DEPARTMENT OF TRANSPORTATION</b>	<b>IL. ROUTE 171/83 (ARCHER AVE.) OVER CAL-SAG CHANNEL STAGE II TRAFFIC CONTROL AND PROTECTION PLAN</b>	F.A.P. RTE.	SECTION	COUNTY	TOTAL SHEETS	SHEET NO.	
Documents\1001 Offices\District 1\Projects\DI488\Drawings\Design\DI48816-sh1-plan.dgn		REVISOR -	REVISOR -			344	545B-BR	COOK	30	24	
PLOT SCALE = 100.0000' / 1" =		CHECKED -	REVISOR -			CONTRACT NO. 62D31					
PLOT DATE = 2/6/2017		DATE -	REVISOR -			ILLINOIS FED. AID PROJECT					

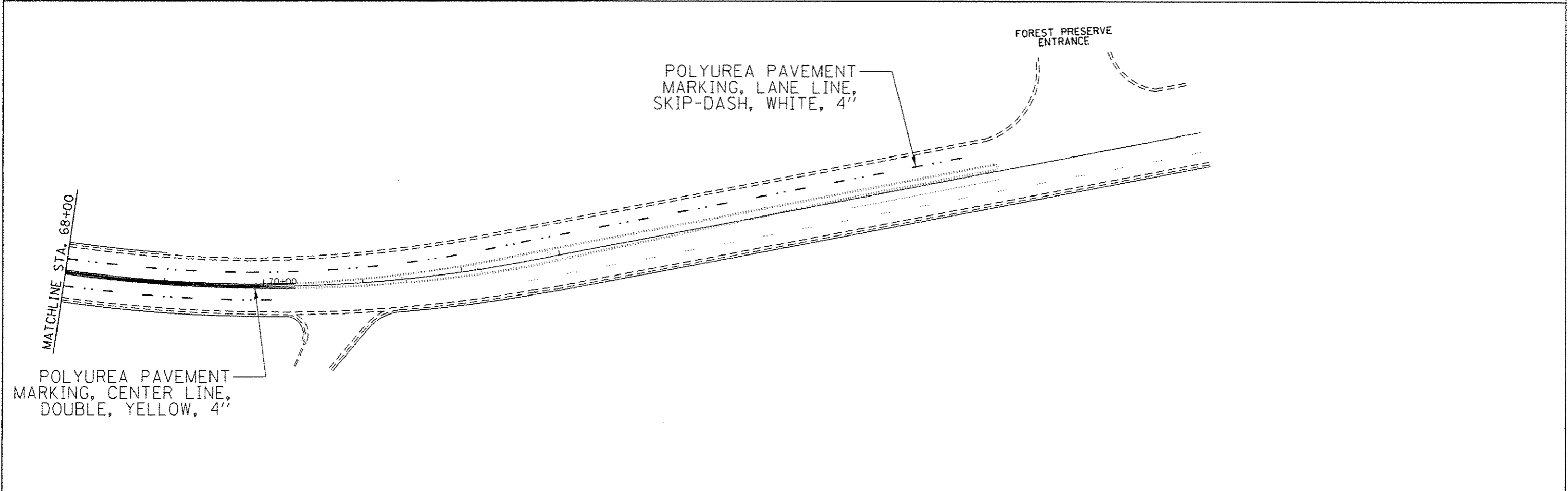
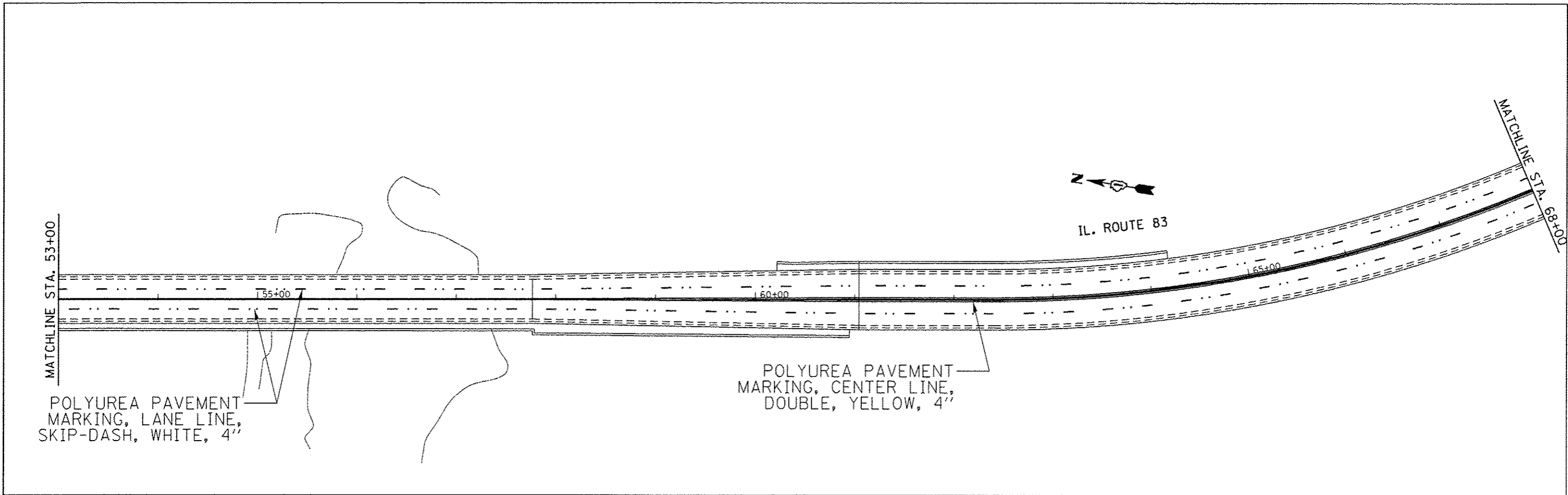
Revised Sheet 2-16-17





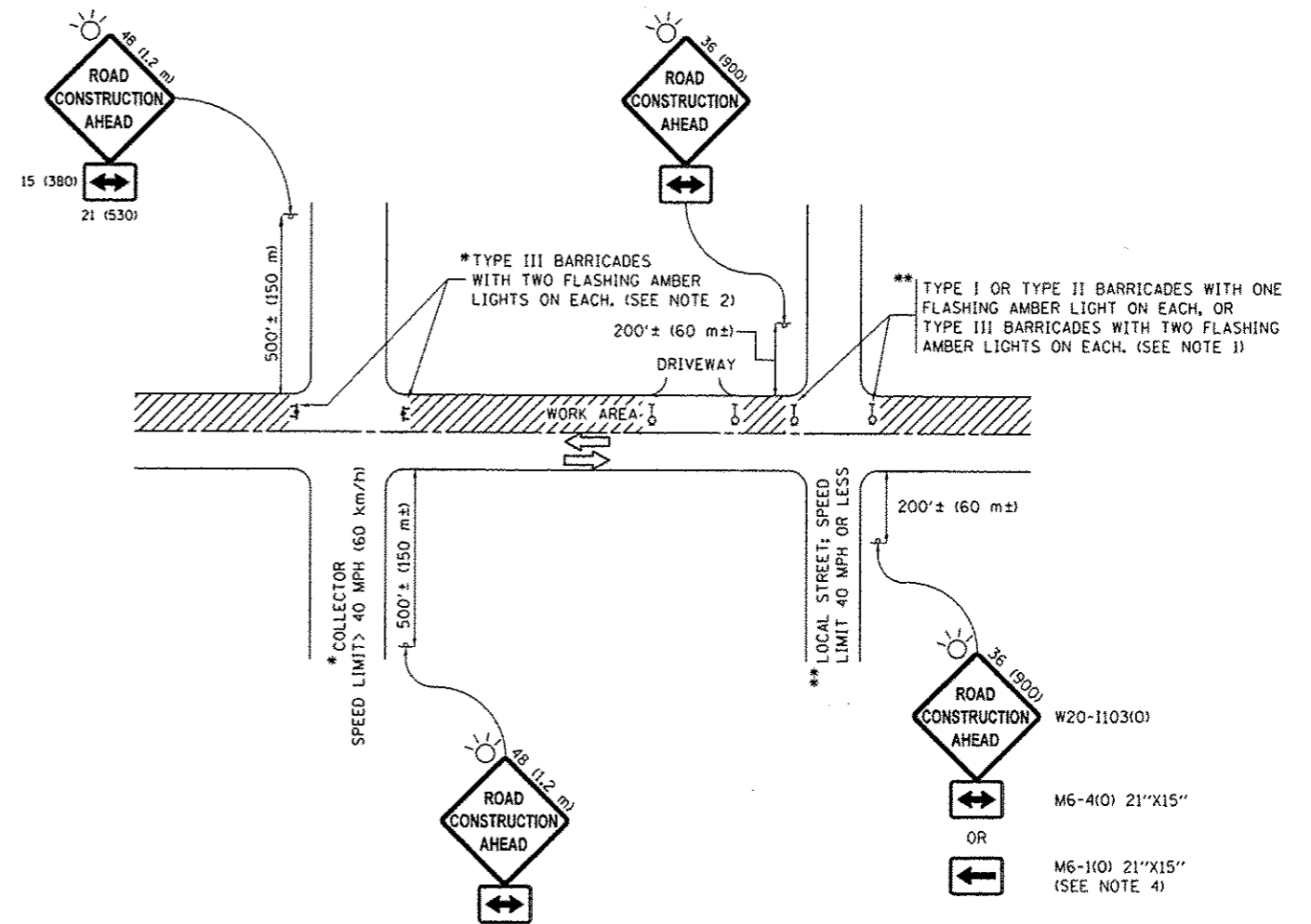
FILE NAME :	USER NAME :	DESIGNED :	REVISED :	STATE OF ILLINOIS DEPARTMENT OF TRANSPORTATION	IL. ROUTE 171 /83 (ARCHER AVE.) OVER CAL-SAG CHANNEL FINAL PAVEMENT MARKING PLAN	F.A.P. RTE.	SECTION	COUNTY	TOTAL SHEETS	SHEET NO.	
pcr\IL084EBIDINTEQ\Illinois.gov\PIWIDOT\Documents\DOT Offices\District 1\Projects\DI460\Drawings\Design\DI460JG-shs-plan.dgn	pyraznowskirb					344	545B-BR	COOK	30	25	
Default	PLOT SCALE = 100.0000' / in.	CHECKED :	REVISED :			CONTRACT NO. 62D31					
	PLOT DATE = 2/6/2017	DATE :	REVISED :			ILLINOIS FED. AID PROJECT					

Revised Sheet 2-16-17



FILE NAME :	USER NAME : pyzenowshrb	DESIGNED -	REVISED -	<b>STATE OF ILLINOIS DEPARTMENT OF TRANSPORTATION</b>	<b>IL. ROUTE 171 / 83 (ARCHER AVE.) OVER CAL-SAG CHANNEL FINAL PAVEMENT MARKING PLAN</b>	F.A.P. RTE.	SECTION	COUNTY	TOTAL SHEETS	SHEET NO.	
pw:\IL084EBI0\INTEG\Illinois.gov\PI\DOT\Documents\IDOT Offices\District 1\Projects\DI140\Drawings\Design\0146816-ehf-plan.dgn	PLLOT SCALE = 100.0000' / 1"	CHECKED -	REVISED -			344	5458-BR	COOK	30	26	
Default	PLLOT DATE = 2/6/2017	DATE -	REVISED -			CONTRACT NO. 62031		ILLINOIS FED. AID PROJECT			
						SCALE: = SHEET OF SHEETS STA. TO STA.					

△ Revised Sheet 2-16-17



**NOTES:**

1. SIDE ROAD WITH A SPEED LIMIT OF 40 MPH (60 km/h) OR LESS AS SHOWN ON THE DRAWING AND AS DIRECTED BY THE ENGINEER:
  - a) ONE "ROAD CONSTRUCTION AHEAD" SIGN 36 x 36 (900x900) WITH A FLASHER MOUNTED ON IT APPROXIMATELY 200' (60 m) IN ADVANCE OF THE MAIN ROUTE.
  - b) THE CLOSED PORTION OF THE MAIN ROUTE SHALL BE PROTECTED BY BLOCKING WITH TYPE I, TYPE II OR TYPE III BARRICADES, 1/3 OF THE CROSS SECTION OF THE CLOSED PORTION.
2. SIDE ROAD WITH A SPEED LIMIT GREATER THAN 40 MPH (60 km/h) AS SHOWN ON THE DRAWING AND AS DIRECTED BY THE ENGINEER:
  - a) ONE "ROAD CONSTRUCTION AHEAD" SIGN 48 x 48 (1.2 m x 1.2 m) WITH A FLASHER MOUNTED ON IT APPROXIMATELY 500' (150 m) IN ADVANCE OF THE MAIN ROUTE.
  - b) THE CLOSED PORTION OF THE MAIN ROUTE SHALL BE PROTECTED BY BLOCKING WITH TYPE III BARRICADES, 1/2 OF THE CROSS SECTION OF THE CLOSED PORTION.
3. CONES MAY BE SUBSTITUTED FOR BARRICADES OR DRUMS AT HALF THE SPACING DURING DAY OPERATIONS. CONES SHALL BE A MINIMUM OF 28 (710) IN HEIGHT.
4. WHEN THE SIDE ROAD LIES BETWEEN THE BEGINNING OF THE MAINLINE SIGNING AND THE WORK ZONE, A SINGLE HEADED ARROW (M6-1) SHALL BE USED IN LIEU OF THE DOUBLE HEADED ARROW (M6-4).
5. WHEN WORK IS BEING PERFORMED ON A SIDE ROAD OR DRIVEWAY, FOLLOW THE APPLICABLE STANDARD(S). THE DIRECTIONAL ARROW (M6-1 OR M6-4) SHALL BE COVERED OR REMOVED WHEN NO LONGER CONSISTENT WITH THE TRAFFIC CONTROL SET-UP.
6. ADVANCE WARNING SIGNS ARE TO BE OMITTED ON DRIVEWAYS UNLESS OTHERWISE SPECIFIED IN THE PLANS OR BY THE ENGINEER.
7. THE TRAFFIC CONTROL AND PROTECTION FOR SIDE ROADS, INTERSECTIONS, AND DRIVEWAYS SHALL BE INCLUDED IN THE COST OF SPECIFIED TRAFFIC CONTROL STANDARDS OR ITEMS.

All dimensions are in inches (millimeters) unless otherwise shown.

FILE NAME :	USER NAME : pyzzenovshirb	DESIGNED - L.H.A.	REVISED - A. HOUSEH 10-15-96
pur\IL084EBIDINTEG\Illinois.gov\PI\DOT\Documents\DOT Offices\District 1\Projects\DI460\Drawings\Design\DI460JG-shr-plan.dgn		CHECKED -	REVISED - T. RAMMACHER 01-06-00
Default	PLOT SCALE = 100.0000' / 1" =	DATE - 06-89	REVISED - A. SCHUETZE 07-01-13
	PLOT DATE = 2/15/2017		REVISED - A. SCHUETZE 09-15-16

**STATE OF ILLINOIS  
DEPARTMENT OF TRANSPORTATION**

**TRAFFIC CONTROL AND PROTECTION FOR  
SIDE ROADS, INTERSECTIONS, AND DRIVEWAYS**

F.A. RTE.	SECTION	COUNTY	TOTAL SHEETS	SHEET NO.
344	545B-BR	COOK	30	26A
TC-10			CONTRACT NO. 62031	
ILLINOIS FED. AID PROJECT				

SCALE: NONE SHEET 1 OF 1 SHEETS STA. TO STA.

Added Sheet 2-16-17