

F.A. RTE.	SECTION	COUNTY	TOTAL SHEETS	SHEET NO.
N/A	15-00163-00-MS	COOK	14	1
CMM-4003(804)		ILLINOIS	CONTRACT NO. 61D53	

FOR INDEX OF SHEETS, SEE SHEET NO. 2

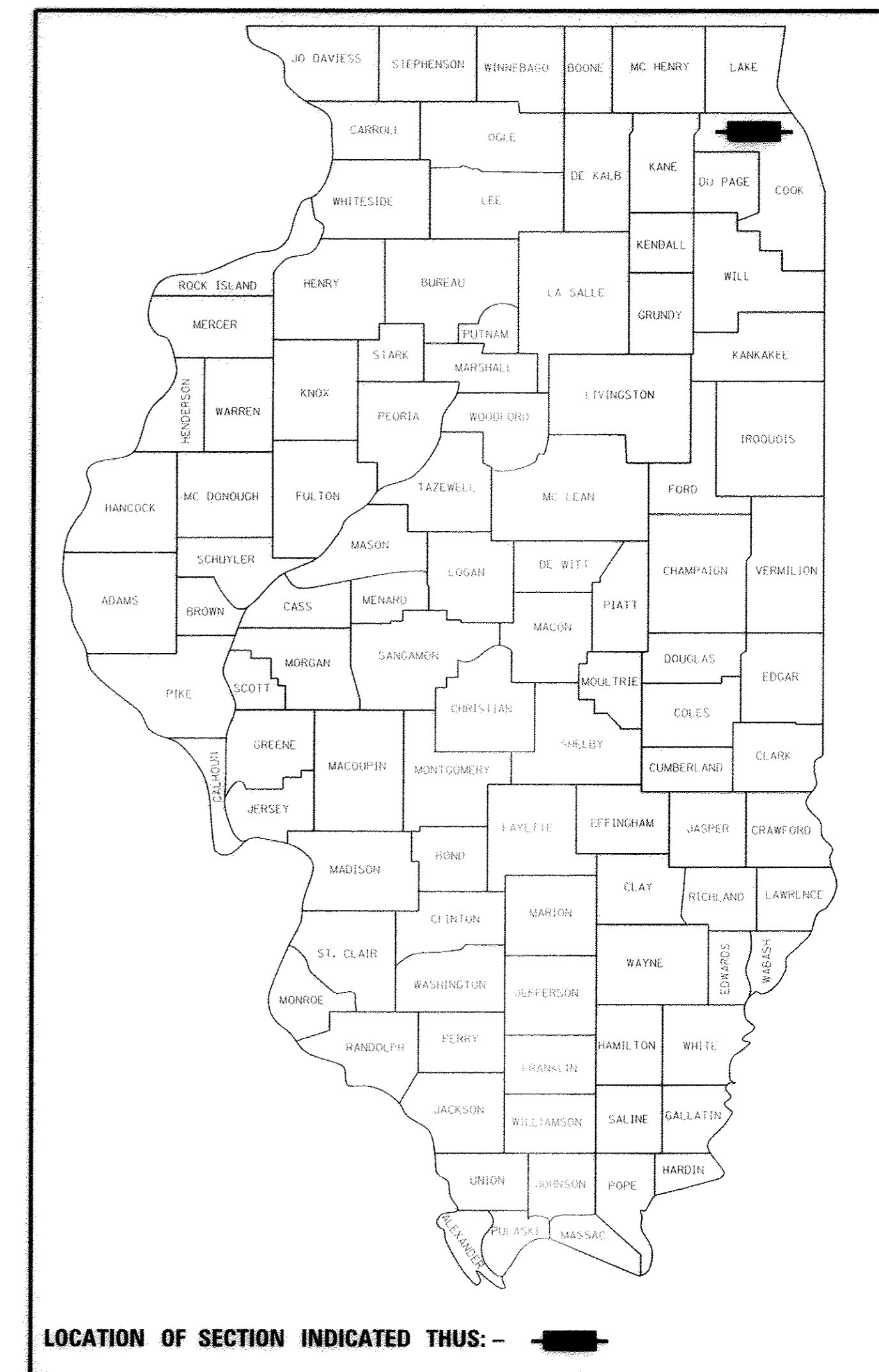
FOR INDEX OF HIGHWAY STANDARDS, SEE SHEET NO. 2

PROJECT LOCATED IN THE VILLAGE OF MOUNT PROSPECT

PLANS FOR PROPOSED FEDERAL AID HIGHWAY

MOUNT PROSPECT METRA STATION
 SECTION: 15-00163-00-MS
 PROJECT: CMM-4003(804)
 COVERED BICYCLE PARKING
 VILLAGE OF MOUNT PROSPECT
 COOK COUNTY

C-91-454-16
 LOCATION MAP



TRAFFIC DATA

US 14 (NORTHWEST HIGHWAY)
 POSTED SPEED LIMIT = 30 MPH, 2015 ADT = 11,500 VPD

IL 83 (SOUTH MAIN STREET)
 POSTED SPEED LIMIT = 30 MPH, 2015 ADT = 14,200 VPD

SOUTH EMERSON STREET
 POSTED SPEED LIMIT = 20 MPH, 2014 ADT = 4,700 VPD

EAST PROSPECT AVENUE
 POSTED SPEED LIMIT = 25 MPH, 2014 ADT = < 1,000 VPD

DESIGN DESIGNATION

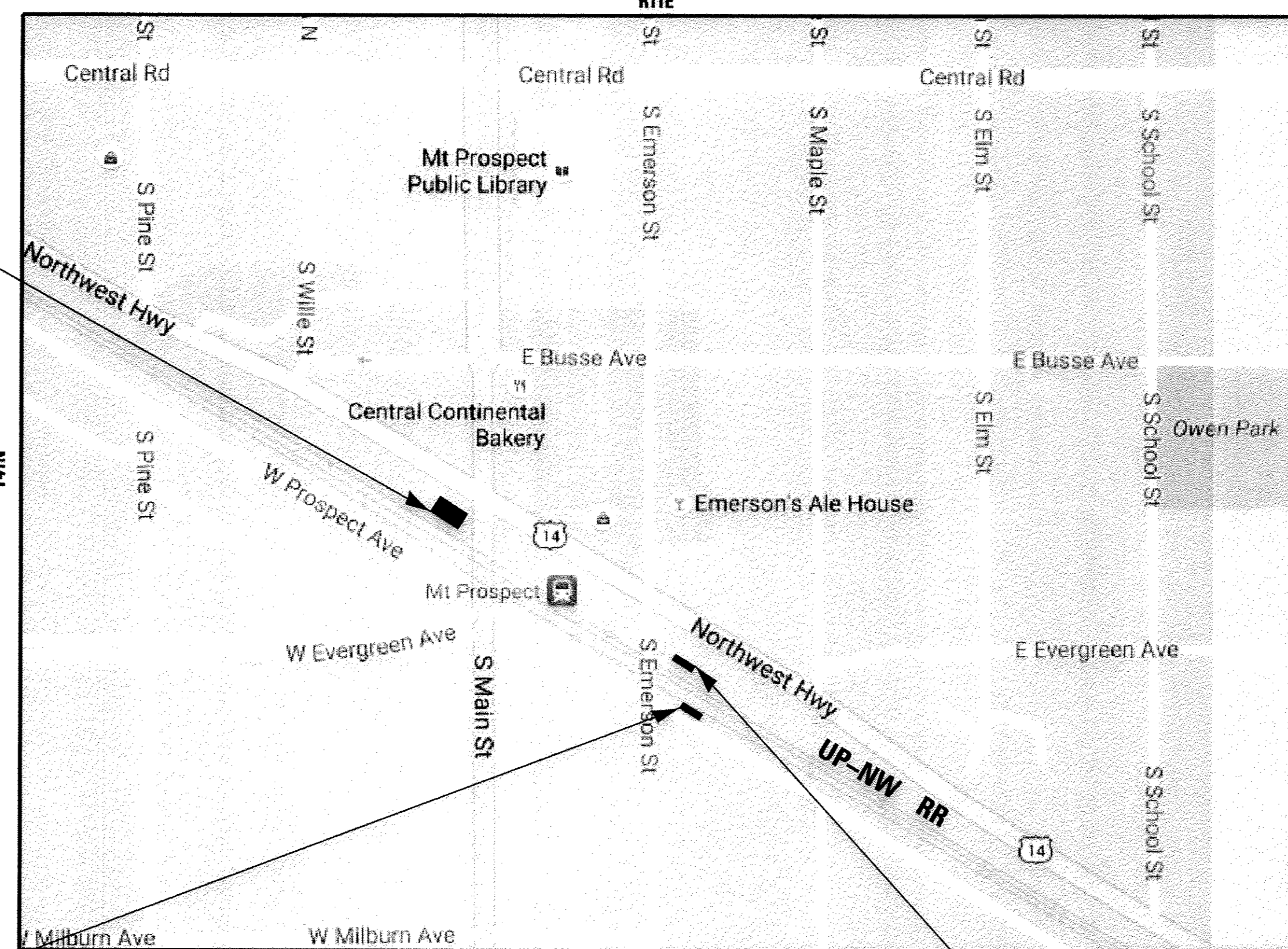
NORTHWEST HIGHWAY - MINOR ARTERIAL

SOUTH MAIN STREET - OTHER PRINCIPAL ARTERIAL

SOUTH EMERSON STREET - MAJOR COLLECTOR

EAST PROSPECT AVENUE - LOCAL ROAD

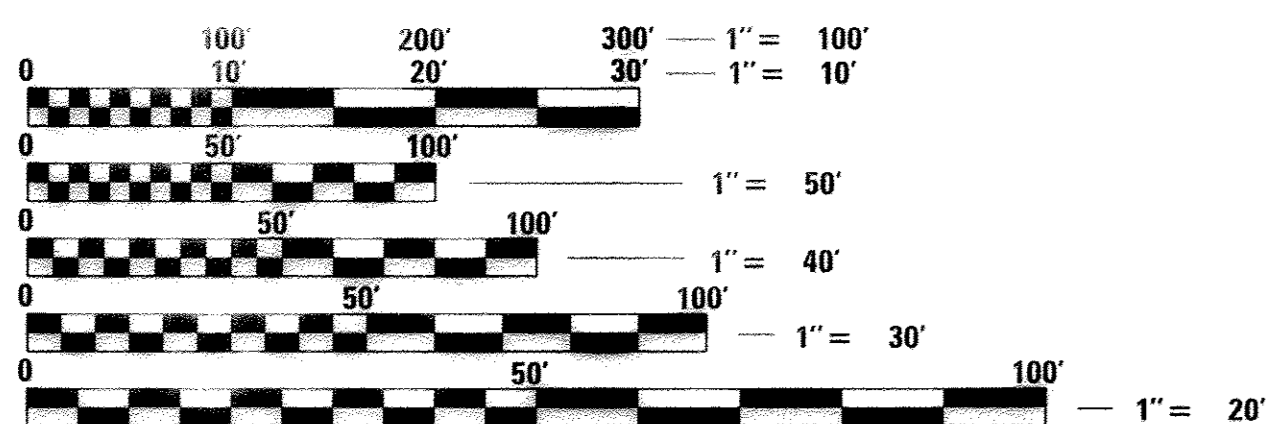
PROJECT LOCATION
 WEST COMMUTER LOT



PROJECT LOCATION
 PROSPECT AVENUE

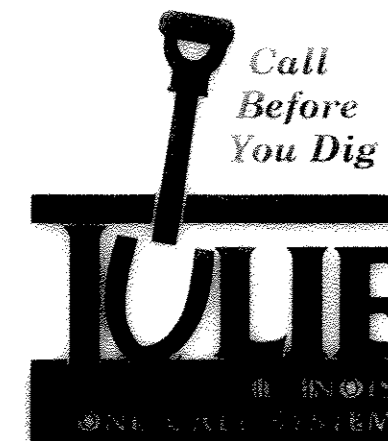
PROJECT LOCATION
 EAST COMMUTER LOT

(OPTION) SECTION 19, T42N, R5E, OF THE THIRD PRINCIPAL MERIDIAN
 GROSS LENGTH = NA FT. = NA MILE
 NET LENGTH = NA FT. = NA MILE



FULL SIZE PLANS HAVE BEEN PREPARED USING STANDARD ENGINEERING SCALES. REDUCED SIZED PLANS WILL NOT CONFORM TO STANDARD SCALES. IN MAKING MEASUREMENTS ON REDUCED PLANS, THE ABOVE SCALES MAY BE USED.

J.U.L.I.E. DESIGN STAGE REQUEST
 DIG. No. A1681152



CONTACT JULIE AT 811 OR 800-892-0123 WITH THE FOLLOWING:
 COUNTY = COOK
 CITY-TWNSHP. = MOUNT PROSPECT-ELK GROVE
 SEC. & 1/4 SEC. NO. = S12 NW 1/4
 48 HOURS (2 working days) BEFORE YOU DIG

CONTRACT NO. 61D53

BAXTER & WOODMAN
 Consulting Engineers

THOMAS M. SLATEY
 62-050844
 LICENSED PROFESSIONAL ENGINEER
 STATE OF ILLINOIS
 [Signature] 12/11/2016

PROJECT MANAGER
 "LICENSE EXPIRES 11-30-2017"
 PROJECT ENGINEER

STATE OF ILLINOIS
 DEPARTMENT OF TRANSPORTATION

APPROVED [Signature] 12/11/2016
 VILLAGE OF MOUNT PROSPECT

PASSED DECEMBER 14, 2016
 [Signature] CHRISTOPHER HOLT
 DISTRICT 1 ENGINEER OF LOCAL ROADS AND STREETS

RELEASING FOR BID
 BASED ON LIMITED REVIEW
 December 14 2016
 [Signature] REGIONAL ENGINEER

PRINTED BY THE AUTHORITY
 OF THE STATE OF ILLINOIS

PROGRAM AND OFFICE ENGINEER: CHARLES RIDDLE, P.E., (847-705-4406) SCHAMBOURG, IL

GENERAL NOTES

1. ALL CONSTRUCTION SHALL BE DONE IN ACCORDANCE WITH THE DETAILS IN THE PLANS, THE SPECIAL PROVISIONS INCLUDED IN THE CONTRACT DOCUMENTS, AND THE LATEST EDITION OF THE FOLLOWING STATE OF ILLINOIS SPECIFICATIONS: "THE STANDARD SPECIFICATIONS FOR ROAD AND BRIDGE CONSTRUCTION" (REFERRED TO AS THE "STANDARD SPECIFICATIONS"), THE "SUPPLEMENTAL SPECIFICATIONS AND RECURRING SPECIAL PROVISIONS", THE "MANUAL ON UNIFORM TRAFFIC CONTROL DEVICES FOR STREETS AND HIGHWAYS", THE "MANUAL OF TEST PROCEDURES FOR MATERIALS" AND THE "STANDARD SPECIFICATIONS FOR WATER AND SEWER MAIN CONSTRUCTION IN ILLINOIS".
2. THE CONTRACTOR SHALL NOTIFY THE VILLAGE PUBLIC WORKS ADMINISTRATOR AT LEAST 48 HOURS IN ADVANCE OF BEGINNING WORK TO OBTAIN VILLAGE UTILITY LOCATIONS.
3. THE CONTRACTOR MAY OBTAIN MUNICIPAL WATER IN BULK, AT NO CHARGE, AS LONG AS THERE IS NOT A "WATERING BAN" IN EFFECT. THE INDISCRIMINATE USE OF FIRE HYDRANTS IS STRICTLY PROHIBITED. WATER FOR CONSTRUCTION SHALL BE METERED USING A VILLAGE-ISSUED METER OR OBTAINED AT THE PUBLIC WORKS DEPARTMENT. THE CONTRACTOR SHALL PROVIDE THE WATER TRUCK AND DRIVER REQUIRED TO OBTAIN AND TRANSPORT THIS WATER. THE VILLAGE RESERVES THE RIGHT TO RESTRICT OR REFUSE THE USE OF VILLAGE WATER IF DEEMED NECESSARY.
4. ACCESS TO PRIVATE DRIVEWAYS SHALL BE PROVIDED AT ALL TIMES EXCEPT DURING ACTUAL CONSTRUCTION ADJACENT THERE TO.
5. THE CONTRACTOR SHALL CONTACT THE LOCAL AGENCY MATERIAL INSPECTOR AT LEAST 48 HOURS PRIOR TO ANY CONCRETE OR HOT-MIX ASPHALT MATERIAL DELIVERIES.
6. ALL POSTS, RAILROAD TIES, AND DECORATIVE TIMBER IN CONFLICT WITH THE PROPOSED IMPROVEMENTS SHALL BE REMOVED AND RELOCATED AS DETERMINED BY THE ENGINEER AT THE TIME OF CONSTRUCTION AND SHALL BE INCLUDED IN THE COST OF EARTH EXCAVATION. EVERY EFFORT SHALL BE MADE BY THE CONTRACTOR WHEN REMOVING THESE ITEMS TO PRESERVE THEM FROM HARM. ITEMS NOT RELOCATED SHALL BE PROPERLY DISPOSED OF BY THE CONTRACTOR.
7. IT IS THE CONTRACTOR'S SOLE RESPONSIBILITY TO COORDINATE WITH THE UNION PACIFIC RAILROAD WHENEVER CONSTRUCTION ACTIVITY IS WITHIN 25 FEET OF THE RAILROAD ROW. THE CONTRACTOR SHALL RETAIN FLAGMEN EMPLOYED AND DESIGNATED BY THE UNION PACIFIC RAILROAD TO MONITOR ON-COMING TRAIN TRAFFIC, AND ADVISE CONTRACTOR PERSONNEL WHEN ACTIVITY ON OR NEAR THE RAILROAD RIGHT-OF-WAY MAY PROCEED. THIS ITEM WILL BE PAID FOR ACCORDING TO ARTICLE 107.12 AND WILL BE REIMBURSED ACCORDING TO ARTICLE 109.05.

INDEX OF SHEETS

SHEET NO.	TITLE
1	COVER SHEET
2	GENERAL NOTES, INDEX OF SHEETS, HIGHWAY STANDARDS, BENCHMARKS
3 - 4	SUMMARY OF QUANTITIES
5	TYPICAL SECTIONS, AND HOT-MIX ASPHALT MIXTURE REQUIREMENTS
6	REMOVAL PLAN
8	PROPOSED PLAN
10 - 11	MISCELLANEOUS DETAILS
12	(TC-10) TRAFFIC CONTROL AND PROTECTION FOR SIDE ROADS, INTERSECTIONS AND DRIVEWAYS
13	(TC-13) DISTRICT ONE TYPICAL PAVEMENT MARKINGS
14	ARTERIAL ROAD INFORMATION SIGN

HIGHWAY STANDARDS

000001-06	STANDARD SYMBOLS, ABBREVIATIONS AND PATTERNS
606001-06	CONCRETE CURB TYPE B AND COMBINATION CONCRETE CURB AND GUTTER
701006-05	OFF-RD OPERATIONS, 2L, 2W, 15' (4.5 m) TO 24" (600 mm) FROM PAVEMENT
701101-05	OFF-RD OPERATIONS, MULTILANE, 15' (4.5 m) TO 24" (600 mm) FROM PAVEMENT
701501-06	URBAN LANE CLOSURE, 2L, 2W, UNDIVIDED
701701-10	URBAN LANE CLOSURE, MULTILANE INTERSECTION
701801-06	SIDEWALK, CORNER OR CROSSWALK CLOSURE
701901-06	TRAFFIC CONTROL DEVICES
720001-01	SIGN PANEL MOUNTING DETAILS
720006-04	SIGN PANEL ERECTION DETAILS

BENCHMARKS

- BM #1 - TOP OF NORTH WEST STUD AT BASE OF RAILROAD SIGNAL AT THE NORTHWEST CORNER OF THE RAILROAD CROSSING AT MAIN STREET
ELEV = 671.63
- BM #2 - TOP OF GROUNDING ROD AT THE SOUTH EAST CORNER OF THE RAILROAD TRAFFIC INTERCONNECT BUILDING NEAR THE NORTHEAST CORNER OF THE RAILROAD CROSSING WITH EMERSON STREET
ELEV = 670.41

COPYRIGHT © 2016, BY BAXTER & WOODMAN, INC.
 STATE OF ILLINOIS - PROFESSIONAL DESIGN FIRM
 LICENSE NO. - 384-018-0000-0000-0000-0000-0000-0000
 EXPIRES 12/31/2017
 04/11/17 AM
 ...\\piotdrv\pdef-bw_default.plt
 ...\\cadd\plots\160182_ben.tbl
 \\server\work\2016\Projects\CrystalLake\160182-Covered Bike Parking\CADD\160182SHT-GenNotes.dgn

	DESIGNED - L.JF	REVISED -	STATE OF ILLINOIS DEPARTMENT OF TRANSPORTATION	GENERAL NOTES, INDEX OF SHEETS, HIGHWAY STANDARDS, BENCHMARKS		F.A.P. RTE.	SECTION	COUNTY	TOTAL SHEETS	SHEET NO.
	DRAWN - KAR	REVISED -		N/A	15-00163-00-MS	COOK	14	2		
CHECKED - TMS	REVISED -	SCALE: NONE		STA.	TO STA.	CONTRACT NO. 61D53				
DATE - 10-07-16	FILE - 160182SHT-GenNotes.dgn					FED. ROAD DIST. NO. ILLINOIS FED. AID PROJECT CMM-4003(804)				

SUMMARY OF QUANTITIES

CODE NO.	ITEM	UNIT	TOTAL	CONSTRUCTION TYPE CODE 0028
20101000	TEMPORARY FENCE	FOOT	30	30
20101100	TREE TRUNK PROTECTION	EACH	1	1
20101200	TREE ROOT PRUNING	EACH	1	1
# 21101625	TOPSOIL FURNISH AND PLACE, 4"	SQ YD	68	68
25200100	SODDING	SQ YD	6	6
25200200	SUPPLEMENTAL WATERING	UNITS	1	1
# 28000510	INLET FILTERS	EACH	1	1
# 35101600	AGGREGATE BASE COURSE, TYPE B 4"	SQ YD	108	108
# 35101800	AGGREGATE BASE COURSE, TYPE B 6"	SQ YD	77	77
40800050	INCIDENTAL HOT-MIX ASPHALT SURFACING	TON	2	2
42400300	PORTLAND CEMENT CONCRETE SIDEWALK 6 INCH	SQ FT	959	959
# 42001300	PROTECTIVE COAT	SQ YD	133	133
# 44000100	PAVEMENT REMOVAL	SQ YD	51	51
44000300	CURB REMOVAL	FOOT	61	61
# 44000500	COMBINATION CURB AND GUTTER REMOVAL	FOOT	69	69

* SPECIALTY ITEM
SPECIAL PROVISION

CODE NO.	ITEM	UNIT	TOTAL	CONSTRUCTION TYPE CODE 0028
44213200	SAW CUTS	FOOT	104	104
# 60600605	CONCRETE CURB, TYPE B	FOOT	33	33
# 60604100	COMBINATION CONCRETE CURB AND GUTTER, TYPE B-6.12 (MODIFIED)	FOOT	71	71
67100100	MOBILIZATION	LSUM	1	1
* # 66900200	NON-SPECIAL WASTE DISPOSAL	CU YD	50	50
* # 66900450	SPECIAL WASTE PLANS AND REPORTS	LSUM	1	1
* # 66900530	SOIL DISPOSAL ANALYSIS	EACH	1	1
70102620	TRAFFIC CONTROL AND PROTECTION, STANDARD 701501	LSUM	1	1
70102635	TRAFFIC CONTROL AND PROTECTION, STANDARD 701701	LSUM	1	1
70102640	TRAFFIC CONTROL AND PROTECTION, STANDARD 701801	LSUM	1	1
* 72400500	RELOCATE SIGN PANEL ASSEMBLY - TYPE A	EACH	5	5
* 78001100	PAINT PAVEMENT MARKING - LETTERS AND SYMBOLS	SQ FT	10	10
* 78001110	PAINT PAVEMENT MARKING - LINE 4"	FOOT	453	453
X0327979	PAVEMENT MARKING REMOVAL - GRINDING	SQ FT	85	85
# XX004688	BRICK PAVER SIDEWALK	SQ YD	680	680

* SPECIALTY ITEM
SPECIAL PROVISION

COPYRIGHT © 2016 BY BAXTER & WOODMAN, INC.
 STATE OF ILLINOIS - PROFESSIONAL DESIGN FIRM
 LICENSE NO. - 184-00121 - EXPIRES 4/30/2017
 I:\C:\ysf\gl\Lake\MTPRO\60182-SHT-S00.dgn 9:47:22 AM 7/11/16



DESIGNED - L.J.F.	REVISED -
DRAWN - K.A.R.	REVISED -
CHECKED - T.M.S.	REVISED -
DATE - 10-07-16	FILE - 160182SHT-S00.dgn

**STATE OF ILLINOIS
DEPARTMENT OF TRANSPORTATION**

SUMMARY OF QUANTITIES

SCALE: NONE STA. TO STA.

F.A.P. RTE.	SECTION	COUNTY	TOTAL SHEETS	SHEET NO.
N/A	15-00163-00-MS	COOK	14	3
FED. ROAD DIST. NO. ILLINOIS FED. AID PROJECT CMM-400318041			CONTRACT NO. 61D53	

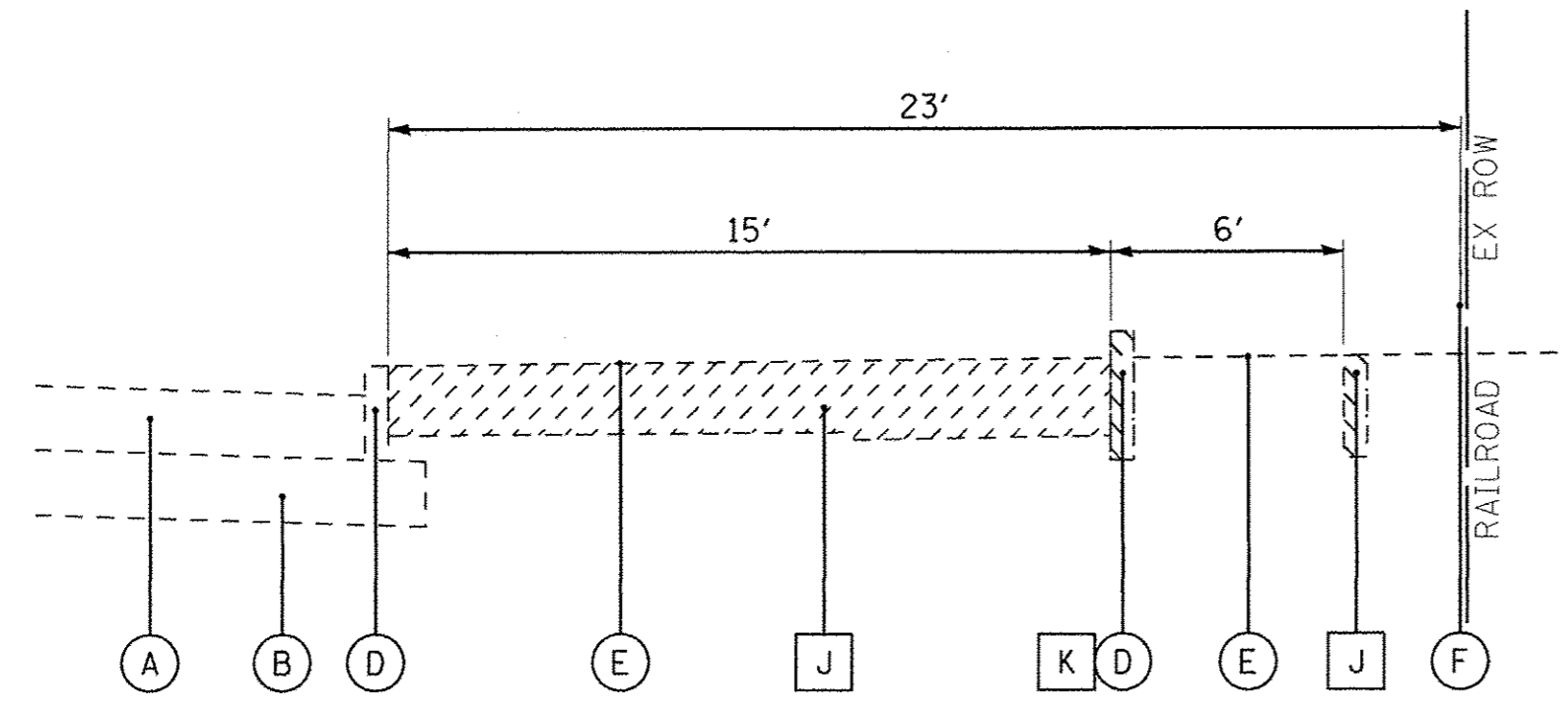
SUMMARY OF QUANTITIES

CODE NO.	ITEM	UNIT	TOTAL	CONSTRUCTION TYPE CODE 0028
# XX007413	CONCRETE EDGE RESTRAINT	FOOT	149	149
# XX008686	BIKE SHELTER	EACH	1	1
# XX009158	BIKE SHELTER TYPE 2	EACH	1	1
# XX009159	BIKE SHELTER TYPE 3	EACH	1	1
# Z0013798	CONSTRUCTION LAYOUT	LSUM	1	1
# Z0030850	TEMPORARY INFORMATION SIGNING	SQ FT	78	78
# Z0048665	RAILROAD PROTECTIVE LIABILITY INSURANCE	LSUM	1	1
# Z0003855	BICYCLE RACKS	EACH	30	30

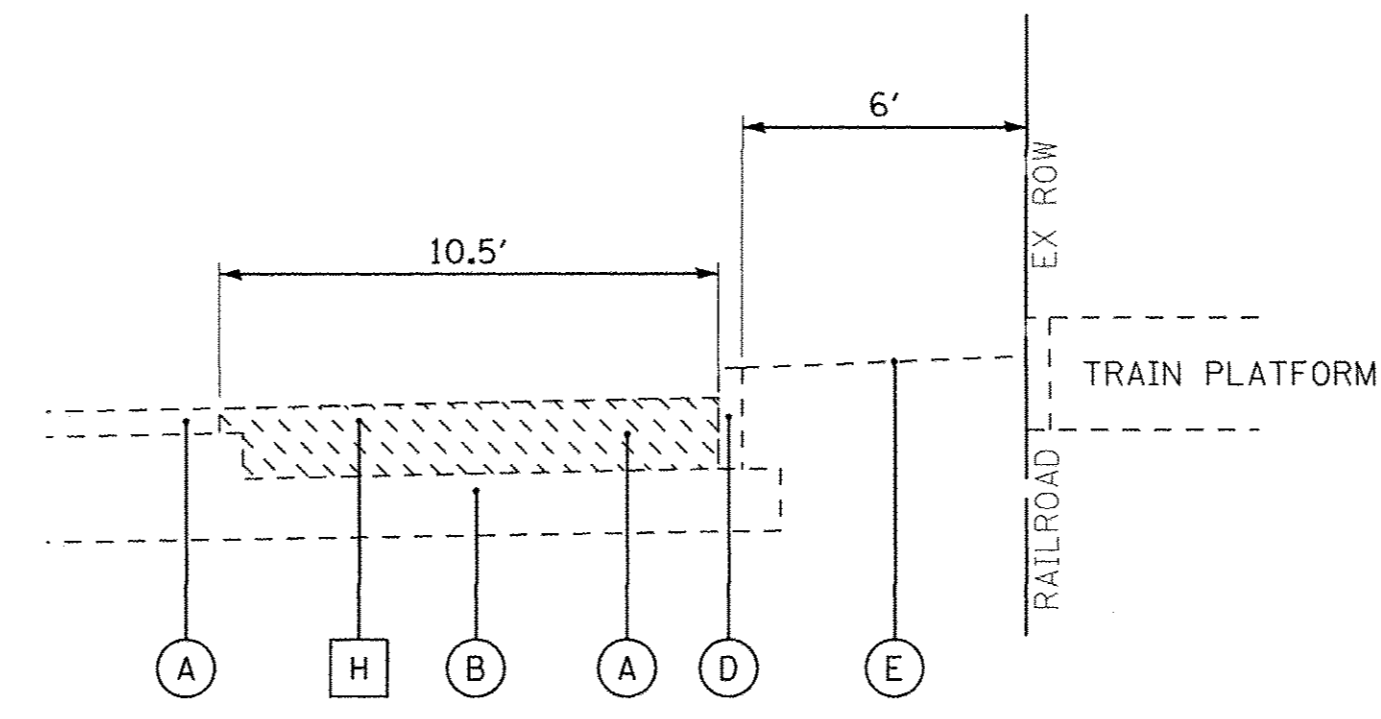
* SPECIALTY ITEM
 # SPECIAL PROVISION

COPYRIGHT © 2016, BY BAXTER & WOODMAN, INC.
 STATE OF ILLINOIS - PROFESSIONAL DESIGN FIRM
 LICENSE NO. - 184-00121 - EXPIRES 4/30/2017
 12/13/2016 9:47:28 AM
 I:\Crystal Lake\TRP\6082-Covered Bike Parking\CADD\6082SHT-S00.dgn

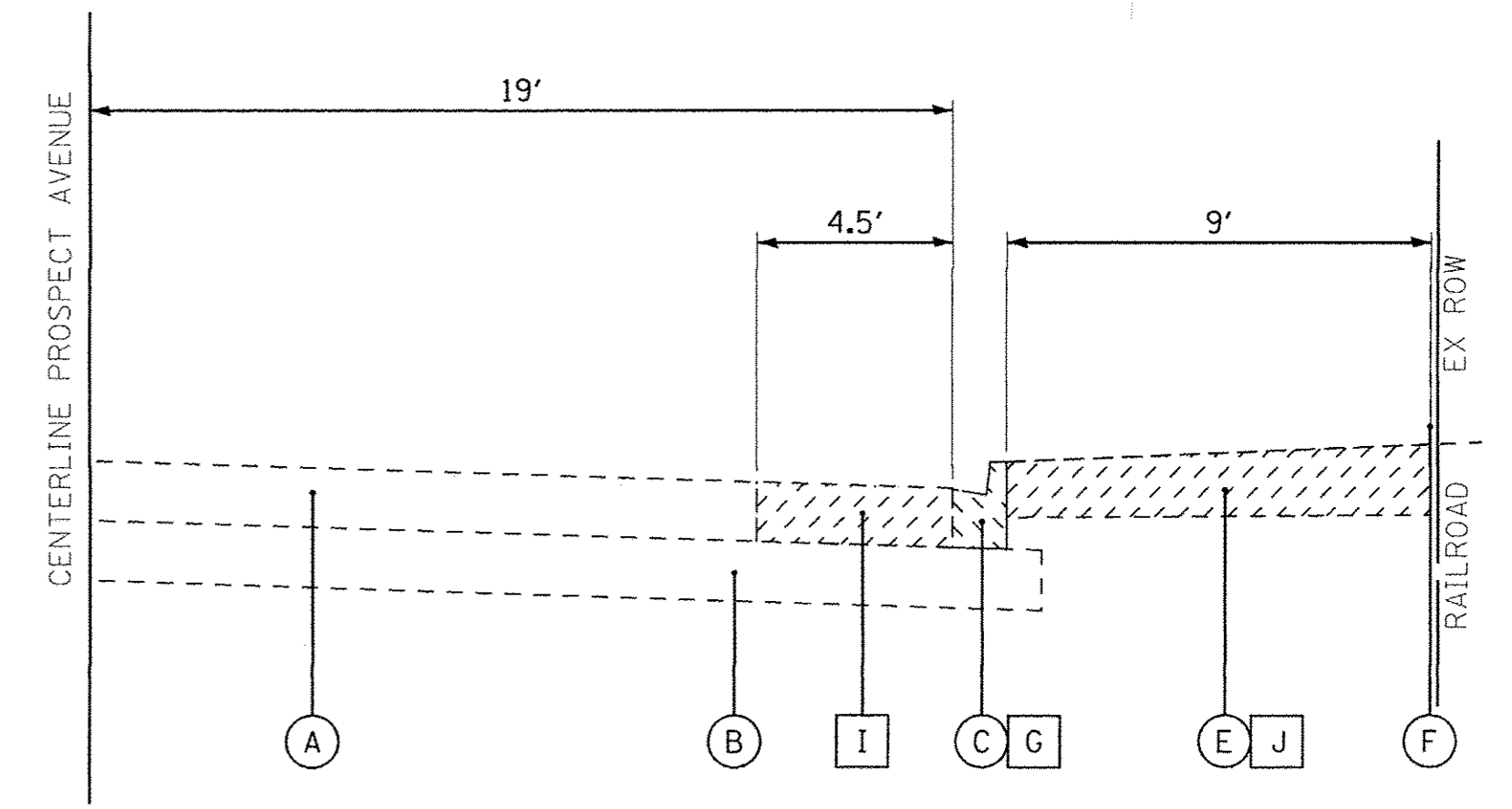
	DESIGNED - LJF	REVISED -	STATE OF ILLINOIS DEPARTMENT OF TRANSPORTATION	SUMMARY OF QUANTITIES	F.A.P. RTE.	SECTION	COUNTY	TOTAL SHEETS	SHEET NO.
	DRAWN - KAR	REVISED -			N/A	15-00163-00-MS	COOK	14	4
	CHECKED - TMS	REVISED -			CONTRACT NO. 61D53				
	DATE - 10-07-16	FILE - 160182SHT-S00.dgn			SCALE: NONE	STA.	TO STA.	FED. ROAD DIST. NO.	ILLINOIS FED. AID PROJECT CMM-4003(604)



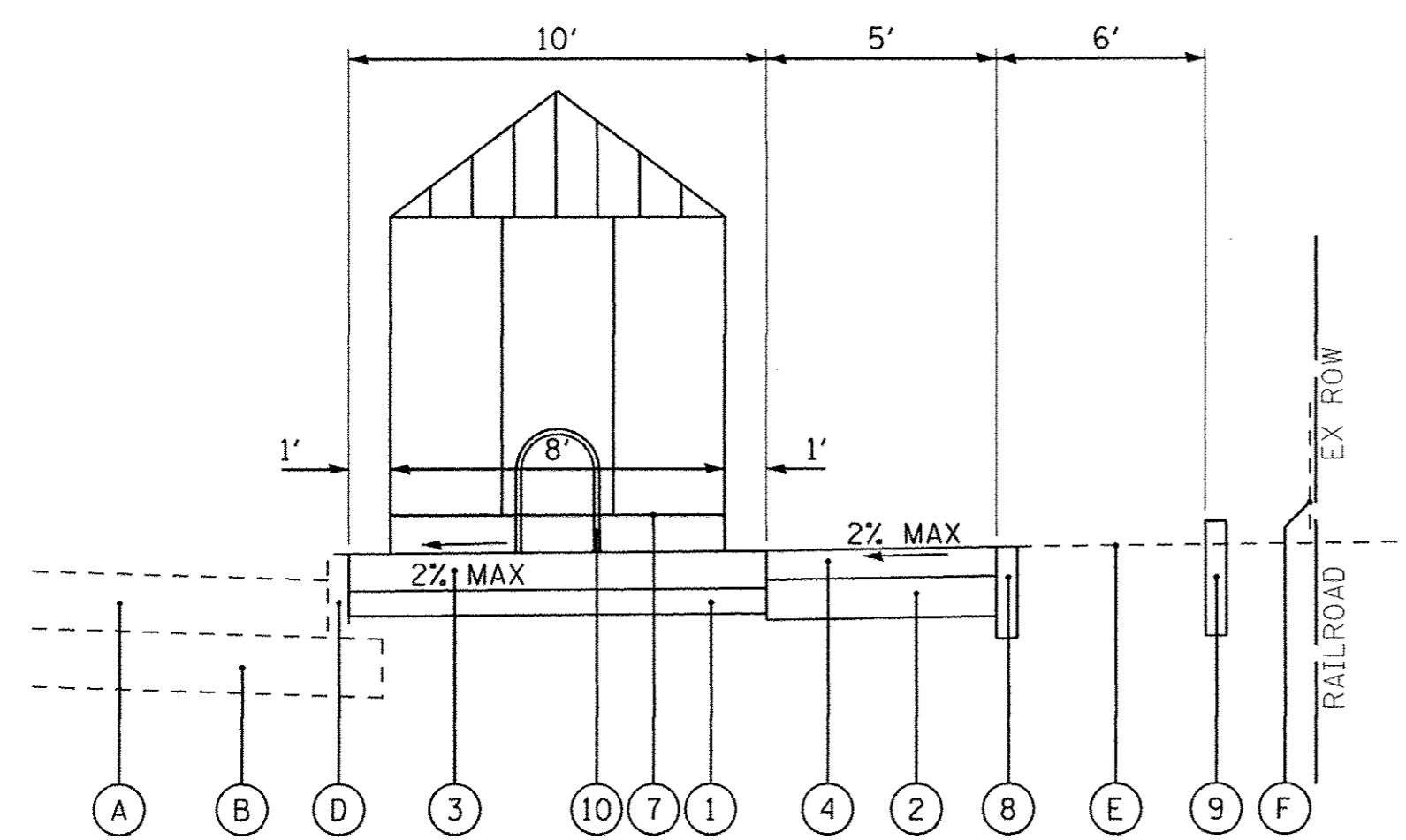
**EXISTING TYPICAL SECTION
WEST COMMUTER LOT
LOOKING SOUTH EAST**



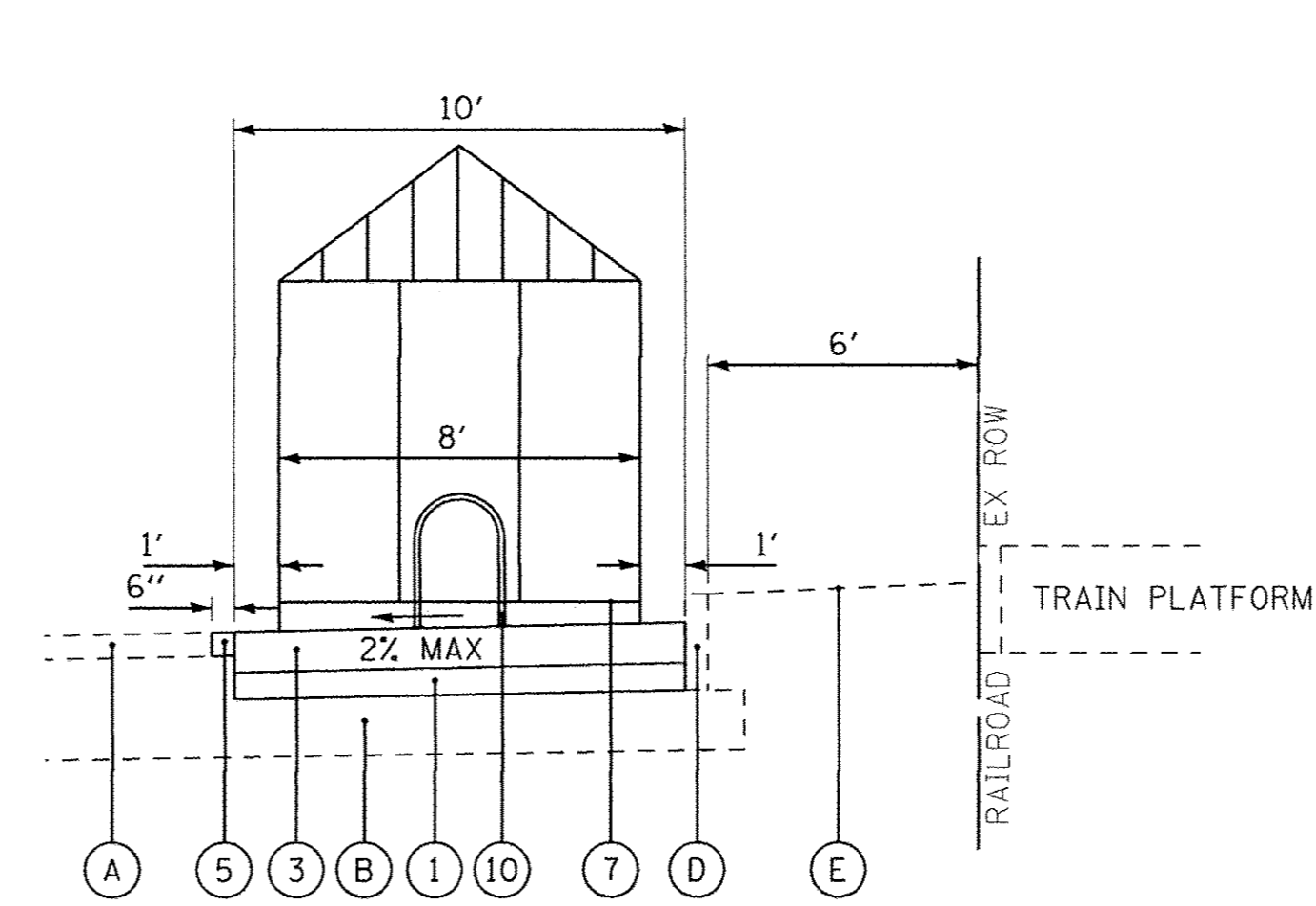
**EXISTING TYPICAL SECTION
EAST COMMUTER LOT
LOOKING SOUTH EAST**



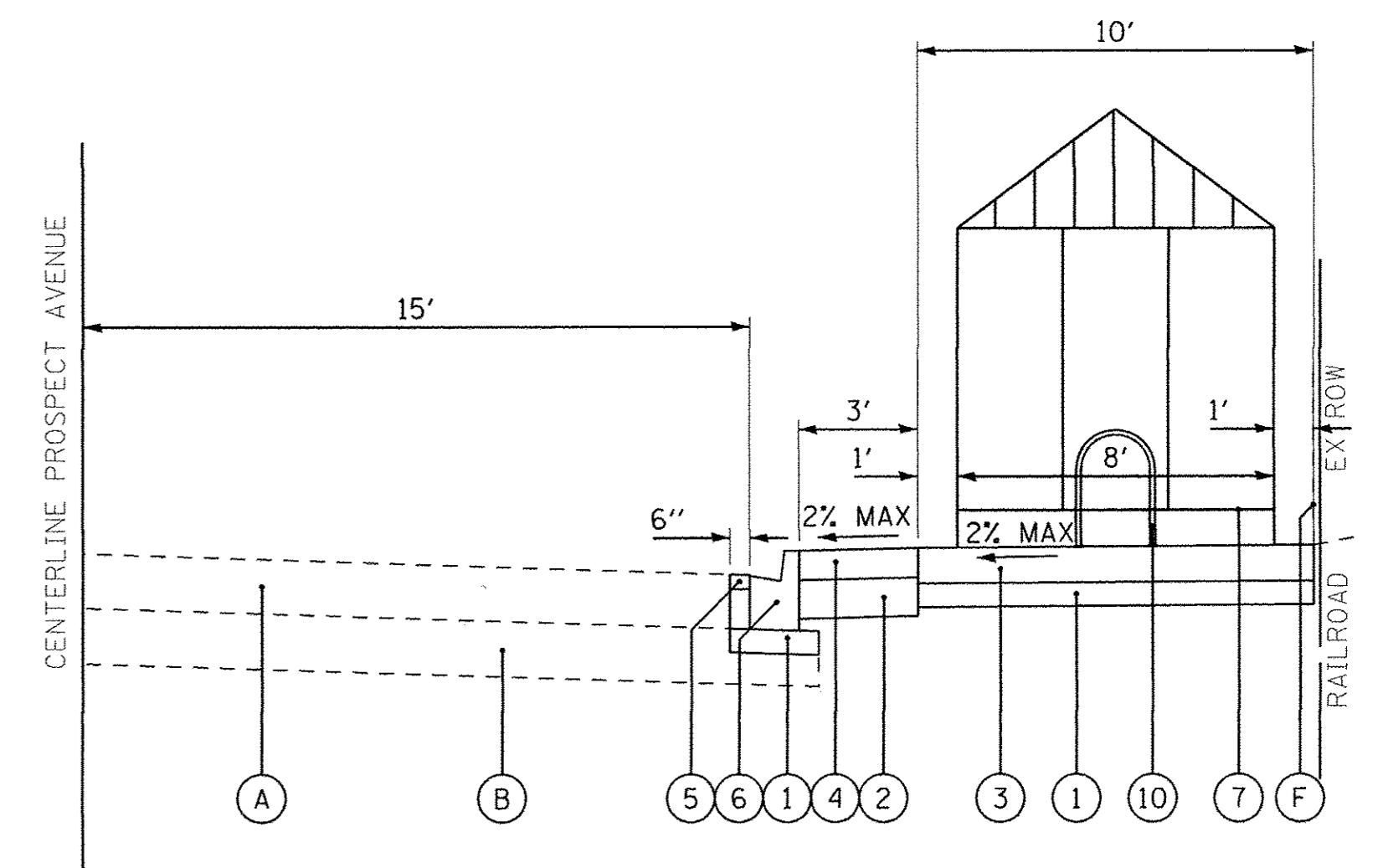
**EXISTING TYPICAL SECTION
PROSPECT AVENUE
LOOKING NORTH WEST**



**PROPOSED TYPICAL SECTION
WEST COMMUTER LOT
LOOKING SOUTH EAST**



**PROPOSED TYPICAL SECTION
EAST COMMUTER LOT
LOOKING SOUTH EAST**



**PROPOSED TYPICAL SECTION
PROSPECT AVENUE
LOOKING NORTH WEST**

EXISTING LEGEND

- (A) EXISTING HOT-MIX ASPHALT PAVEMENT
- (B) EXISTING AGGREGATE BASE COURSE
- (C) EXISTING CURB AND GUTTER TYPE B-6.12
- (D) EXISTING CURB TYPE B
- (E) EXISTING GROUND
- (F) EXISTING FENCE
- (G) COMBINATION CURB AND GUTTER REMOVAL
- (H) PAVEMENT REMOVAL, 10"
- (I) PAVEMENT REMOVAL, 12"
- (J) EARTH EXCAVATION (PAID FOR AS NON-SPECIAL WASTE DISPOSAL)
- (K) CURB REMOVAL
- [Hatched Box] ITEM TO BE REMOVED

PROPOSED LEGEND

- (1) AGGREGATE BASE COURSE, TYPE B 4"
- (2) AGGREGATE BASE COURSE, TYPE B 6"
- (3) PCC CONCRETE SIDEWALK, 6"
- (4) BRICK PAVER SIDEWALK
- (5) INCIDENTAL HMA SURFACING
- (6) COMBINATION CONCRETE CURB AND GUTER, TYPE B-6.12 (MODIFIED)
- (7) BIKE SHELTER
- (8) CONCRETE EDGE RESTRAINT
- (9) CONCRETE CURB, TYPE B
- (10) BIKE RACKS

HOT-MIX ASPHALT MIXTURE REQUIREMENTS

HOT-MIX ASPHALT MIXTURE REQUIREMENTS	
MIXTURE TYPE	AIR VOIDS @ Ndes
INCIDENTAL HOT-MIX ASPHALT SURFACING	
HOT-MIX ASPHALT SURFACE COURSE, MIX "D", N50 (IL 9.5mm); 2 1/2"	4% @ 50 GYR

THE UNIT WEIGHT USED TO CALCULATE ALL HOT-MIX ASPHALT SURFACE MIXTURE QUANTITIES IS 112LB/SY-IN.
 THE 'AC TYPE' FOR POLYMERIZED HMA MIXES SHALL BE "SBS/SBR PG 76-22" AND FOR NON-POLYMERIZED HMA THE "AC TYPE" SHALL BE "PG 64-22" UNLESS MODIFIED BY DISTRICT ONE SPECIAL PROVISIONS.
 FOR HMA FULL DEPTH "AC TYPE" SEE SPECIAL PROVISIONS
 FOR USE OF RECYCLED MATERIALS SEE SPECIAL PROVISIONS.

COPYRIGHT © 2016, BY BAXTER & WOODMAN, INC. ... \pilot\rv\paf-bw_DeFault.plt
 STATE OF ILLINOIS - PROFESSIONAL DESIGN FIRM
 LICENSE NO. - 184-012372016
 PROJECTS \C:\Users\jcrystad\OneDrive\Projects\160182SHT-TypSec.dgn
 DATE 10-07-16

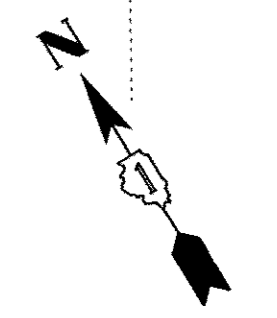
BAXTER & WOODMAN Consulting Engineers	DESIGNED - LJF	REVISED -
	DRAWN - KAR	REVISED -
	CHECKED - TMS	REVISED -
	DATE - 10-07-16	FILE - 160182SHT-TypSec.dgn

**STATE OF ILLINOIS
DEPARTMENT OF TRANSPORTATION**

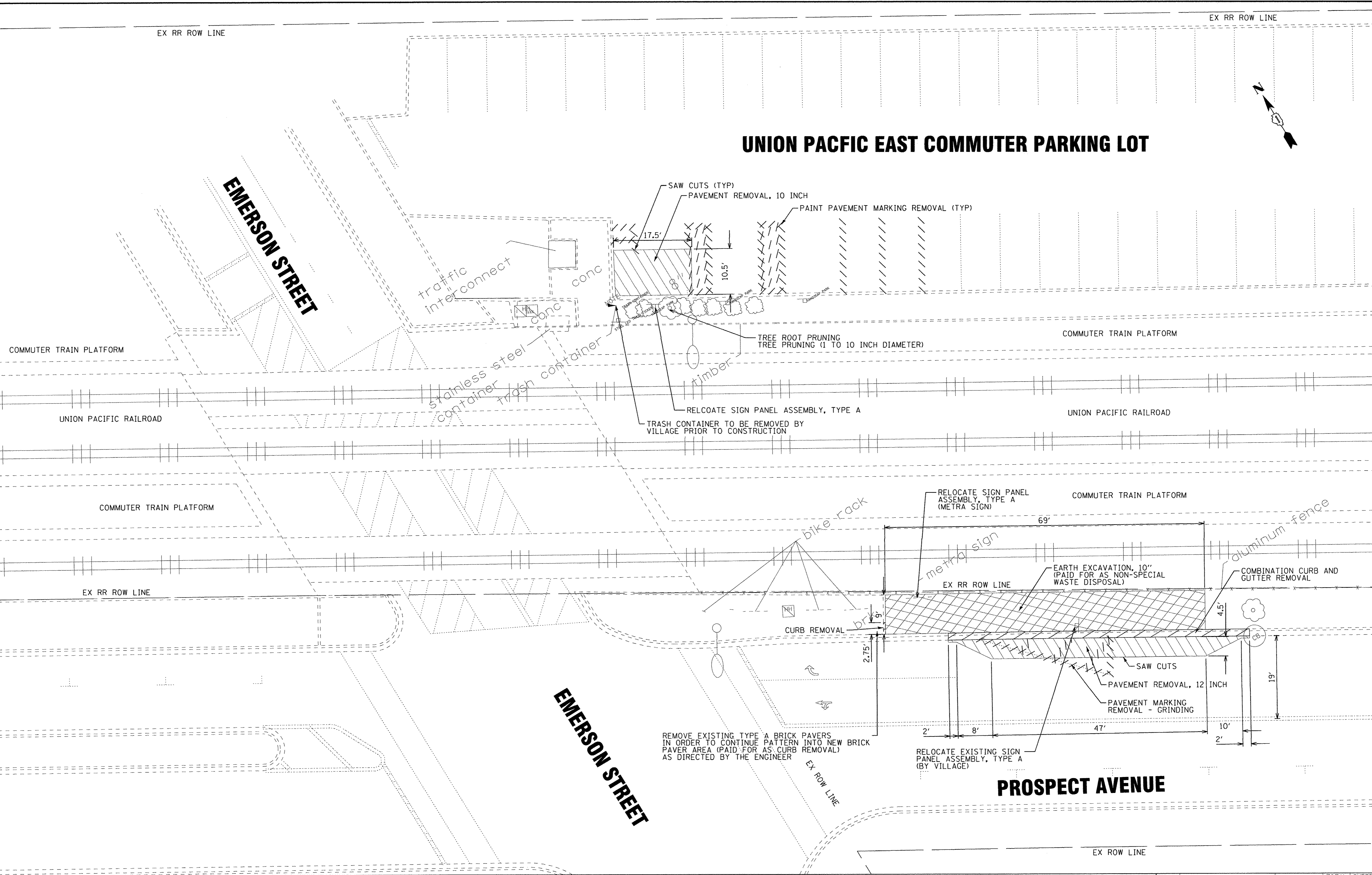
**TYPICAL SECTIONS, EXISTING PAVEMENT THICKNESS
TABLE AND HOT-MIX ASPHALT MIXTURE REQUIREMENTS**

SCALE: NONE STA. TO STA.

F.A.P. RTE.	SECTION	COUNTY	TOTAL SHEETS	SHEET NO.
N/A	15-00163-00-MS	COOK	14	5
FED. ROAD DIST. NO. ILLINOIS FED. AID PROJECT CMM-400318041			CONTRACT NO. 61D53	



UNION PACIFIC EAST COMMUTER PARKING LOT



DESIGNED - LJF	REVISED -
DRAWN - KAR	REVISED -
CHECKED - TMS	REVISED -
DATE - 10-07-16	FILE - 160182SHT-Removal.dgn

STATE OF ILLINOIS
DEPARTMENT OF TRANSPORTATION

REMOVAL PLAN

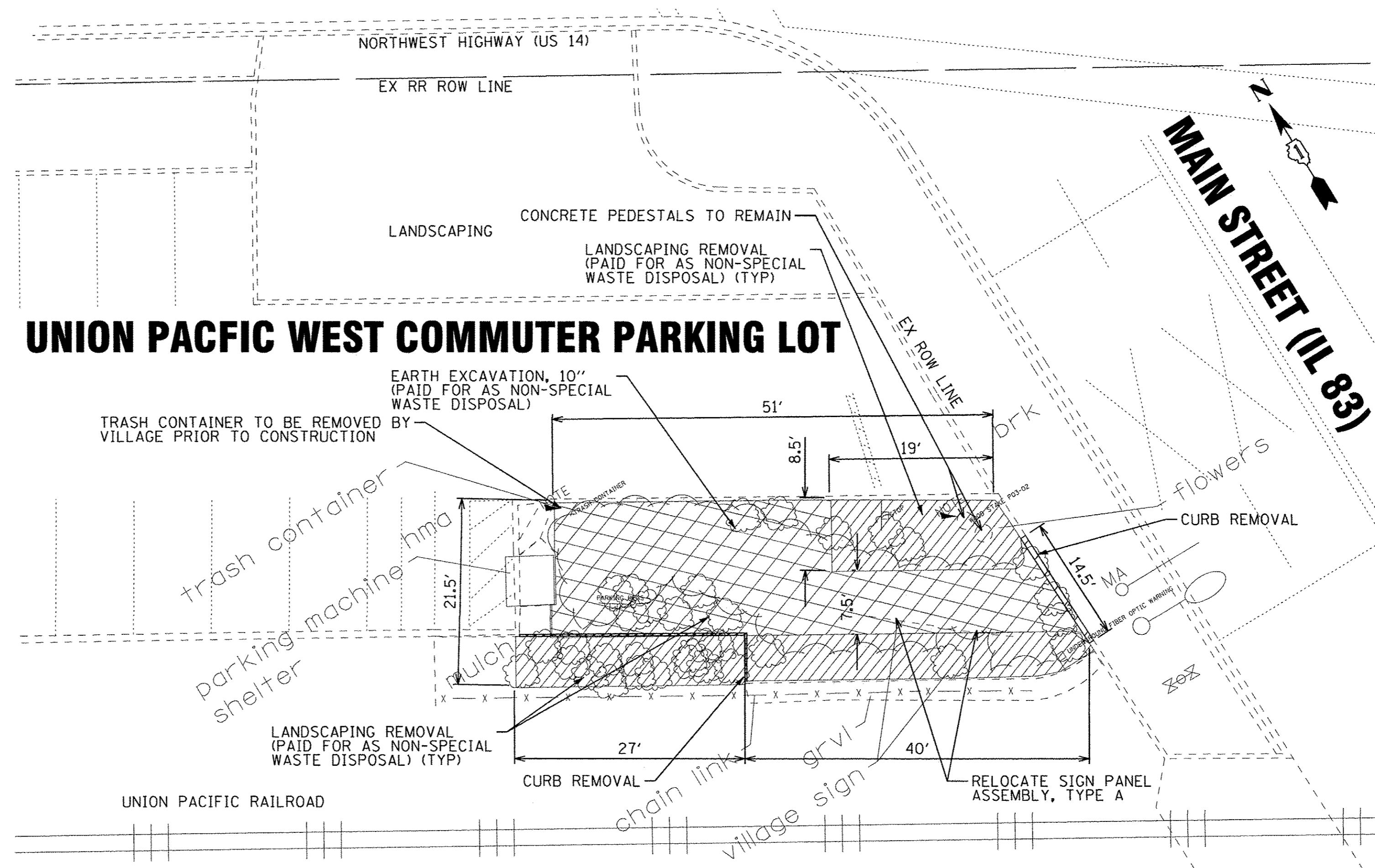
SCALE: 1" = 10'

STA. TO STA.

F.A.P. RTE.	SECTION	COUNTY	TOTAL SHEETS	SHEET NO.
N/A	15-00163-00-MS	COOK	14	6
CONTRACT NO. 61D53				
FED. ROAD DIST. NO.		ILLINOIS FED. AID PROJECT CMM-400318041		

COPYRIGHT © 2016, BY BAXTER & WOODMAN, INC.
 STATE OF ILLINOIS - PROFESSIONAL DESIGN FIRM
 LICENSE NO. - 384-00171 - EXPIRES 6/30/2017
 12/31/2016

NORTHWEST HIGHWAY (US 14)



COPYRIGHT © 2016, BY BAXTER & WOODMAN, INC. ... \plots\rv\pdf-BW_DeFault.plt
 STATE OF ILLINOIS - PROFESSIONAL DESIGN FIRM ... \CAD\Plots\160182_SHT.dwg
 PROJECT NO. - 160182 - EXPROJ - 07/17/2011 ... \geop\blackwood.com\Projects\CrystalLake\160182-Covered Bike Parking\CADD\160182SHT-Removal.dgn
 7/14/11 12/27/2016 341733 .dwg

	DESIGNED - L.J.F.	REVISED -
	DRAWN - KAR	REVISED -
	CHECKED - TMS	REVISED -
	DATE - 10-07-16	FILE - 160182SHT-Removal.dgn

STATE OF ILLINOIS
DEPARTMENT OF TRANSPORTATION

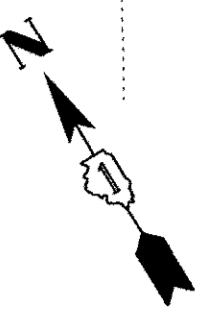
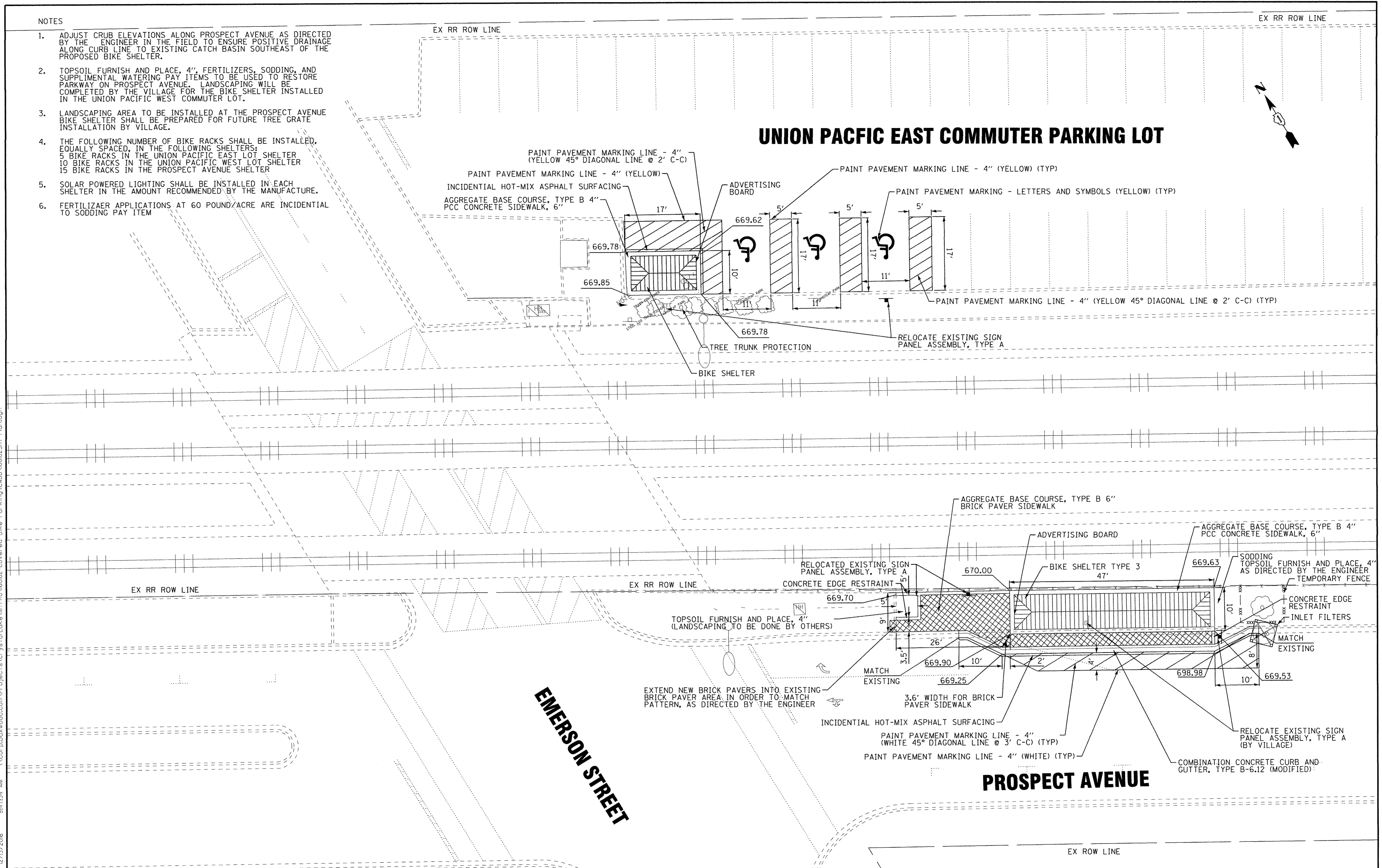
REMOVAL PLAN	
SCALE:	STA. TO STA.

F.A.P. RTE.	SECTION	COUNTY	TOTAL SHEETS	SHEET NO.
N/A	15-00163-00-MS	COOK	14	7
CONTRACT NO. 61D53			ILLINOIS FED. AID PROJECT CMM-40038041	

NOTES

- ADJUST CRUB ELEVATIONS ALONG PROSPECT AVENUE AS DIRECTED BY THE ENGINEER IN THE FIELD TO ENSURE POSITIVE DRAINAGE ALONG CURB LINE TO EXISTING CATCH BASIN SOUTHEAST OF THE PROPOSED BIKE SHELTER.
- TOPSOIL FURNISH AND PLACE, 4", FERTILIZERS, SODDING, AND SUPPLEMENTAL WATERING PAY ITEMS TO BE USED TO RESTORE PARKWAY ON PROSPECT AVENUE. LANDSCAPING WILL BE COMPLETED BY THE VILLAGE FOR THE BIKE SHELTER INSTALLED IN THE UNION PACIFIC WEST COMMUTER LOT.
- LANDSCAPING AREA TO BE INSTALLED AT THE PROSPECT AVENUE BIKE SHELTER SHALL BE PREPARED FOR FUTURE TREE GRATE INSTALLATION BY VILLAGE.
- THE FOLLOWING NUMBER OF BIKE RACKS SHALL BE INSTALLED, EQUALLY SPACED, IN THE FOLLOWING SHELTERS:
5 BIKE RACKS IN THE UNION PACIFIC EAST LOT SHELTER
10 BIKE RACKS IN THE UNION PACIFIC WEST LOT SHELTER
15 BIKE RACKS IN THE PROSPECT AVENUE SHELTER
- SOLAR POWERED LIGHTING SHALL BE INSTALLED IN EACH SHELTER IN THE AMOUNT RECOMMENDED BY THE MANUFACTURE.
- FERTILIZAEER APPLICATIONS AT 60 POUND/ACRE ARE INCIDENTAL TO SODDING PAY ITEM

UNION PACIFIC EAST COMMUTER PARKING LOT



COPYRIGHT © 2016, BY BAXTER & WOODMAN, INC.
 STATE OF ILLINOIS - PROFESSIONAL DESIGN FIRM
 LICENSE NO. - 384-00121 - EXPIRES 4/30/2017
 LJJF
 12/17/2016
 ...\\p10-rdr-v\pdef-BM_DeFault.pit
 ...\\CADD\PROJECTS\160182\Pen_Tb
 ...\\corpub\wood.com\Projects\C\ystel\Lake\160182-Covered Bike Parking\CADD\160182SHT-Plan.dgn

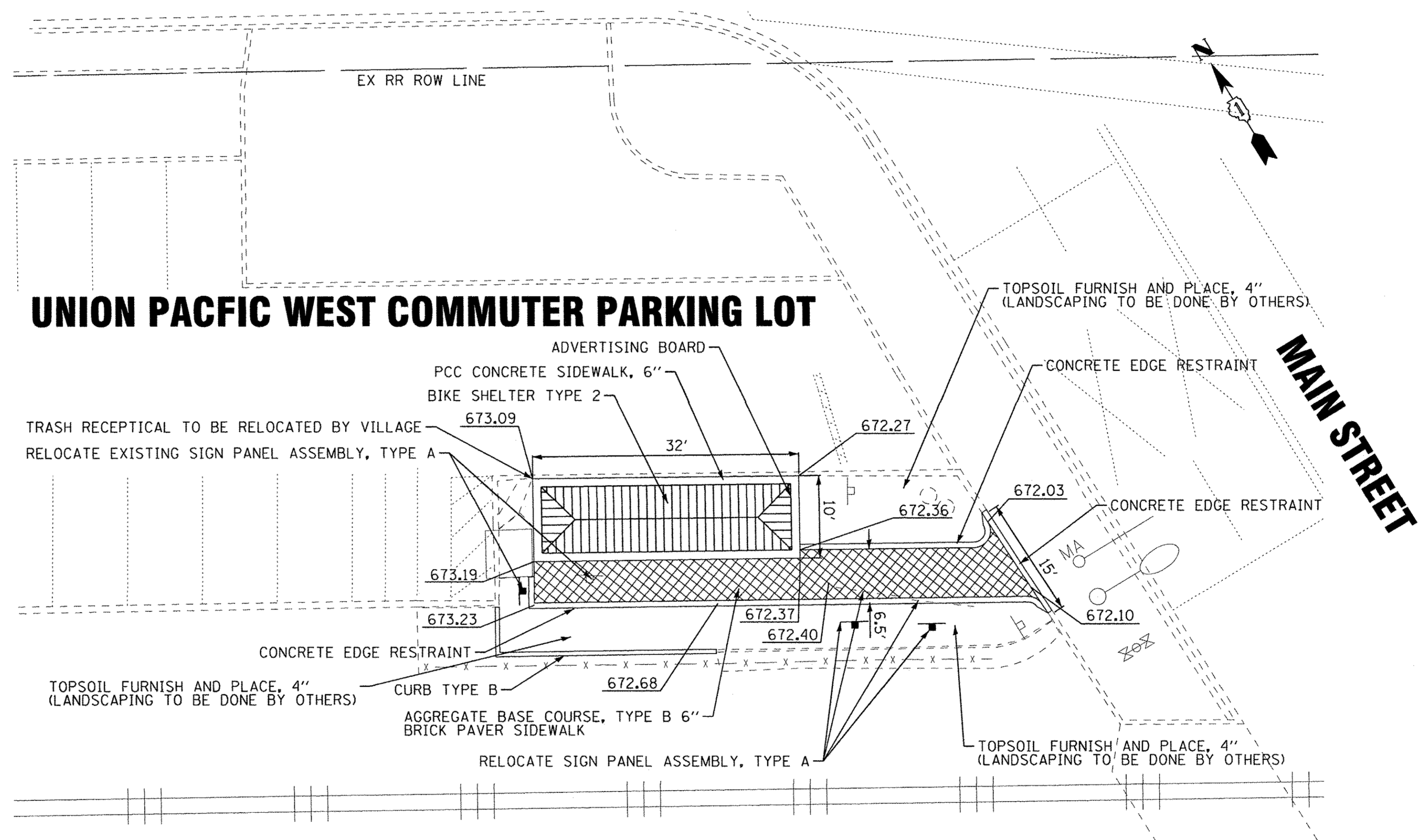
BAXTER & WOODMAN Consulting Engineers	DESIGNED - LJJF	REVISED -
	DRAWN - KAR	REVISED -
	CHECKED - TMS	REVISED -
	DATE - 10-07-16	FILE - 160182SHT-Plan.dgn

STATE OF ILLINOIS
DEPARTMENT OF TRANSPORTATION

PROPOSED PLAN	
SCALE: 1" = 10'	STA. TO STA.

F.A.P. RTE.	SECTION	COUNTY	TOTAL SHEETS	SHEET NO.
N/A	15-00163-00-MS	COOK	14	8
FED. ROAD DIST. NO.		ILLINOIS FED. AID PROJECT CMM-4003(804)	CONTRACT NO. 61D53	

NORTHWEST HIGHWAY (US 14)



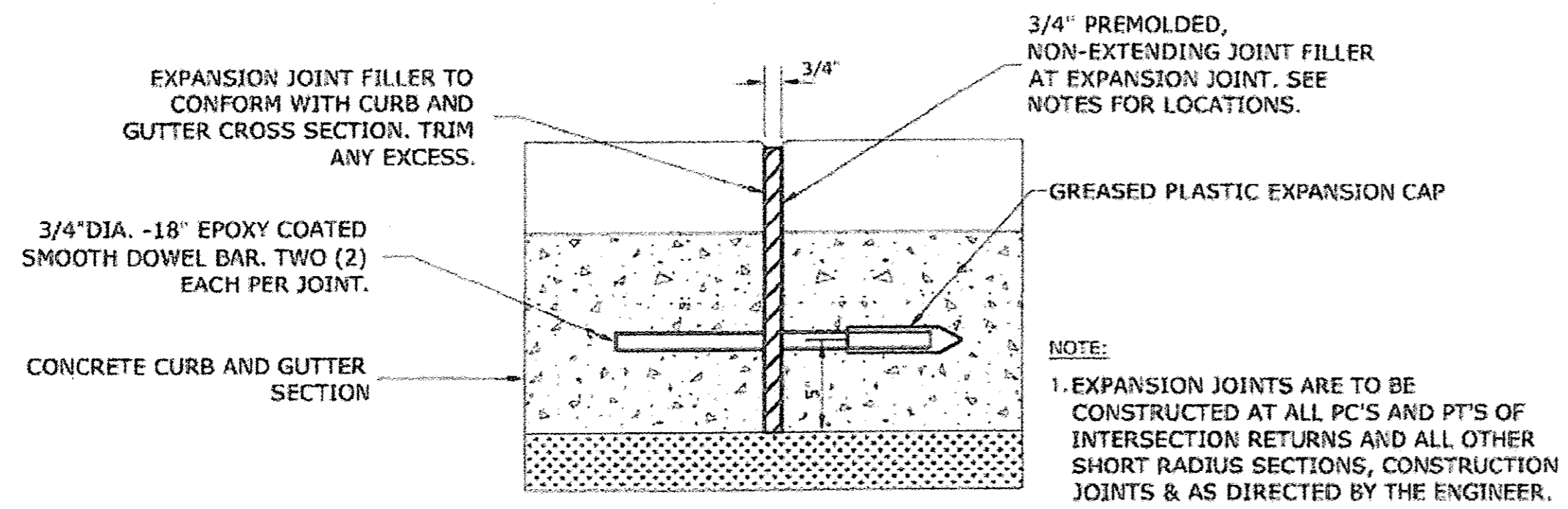
COPYRIGHT © 2016, BY BAXTER & WOODMAN, INC.
 STATE OF ILLINOIS - PROFESSIONAL DESIGN FIRM
 LICENSE NO. - 18474-02/03/2016
 PROJECT: CRYSTAL LAKE VILLAGE MAINTENANCE PROJECTS
 PROJECT NO. - 160182SHT-Plan.dgn
 DATE: 10-07-16

BAXTER & WOODMAN Consulting Engineers	DESIGNED - LJF	REVISED -
	DRAWN - KAR	REVISED -
	CHECKED - TMS	REVISED -
	DATE - 10-07-16	FILE - 160182SHT-Plan.dgn

**STATE OF ILLINOIS
DEPARTMENT OF TRANSPORTATION**

PROPOSED PLAN	
SCALE:	STA. TO STA.

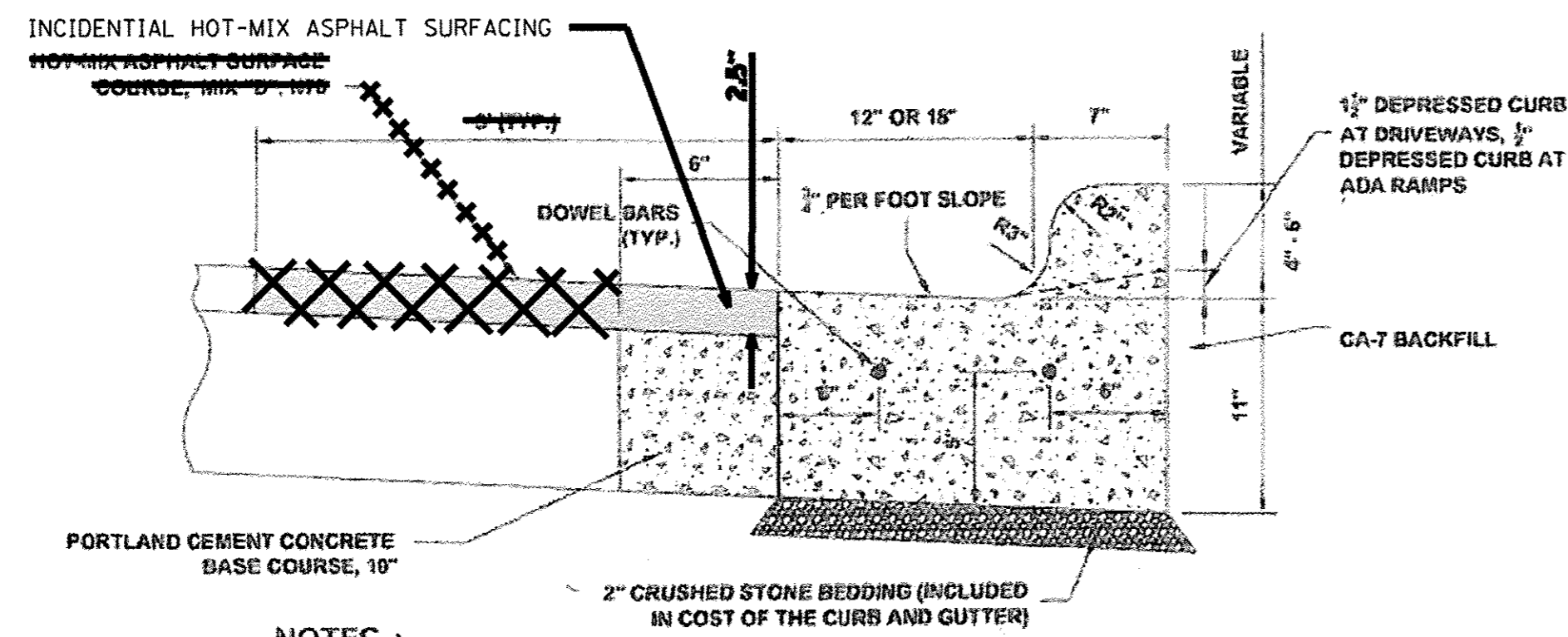
F.A.P. RTE.	SECTION	COUNTY	TOTAL SHEETS	SHEET NO.
N/A	15-00163-00-MS	COOK	14	9
FED. ROAD DIST. NO.			ILLINOIS FED. AID PROJECT CMM-4003(B04)	
			CONTRACT NO. 61D53	



TYPICAL CURB AND GUTTER EXPANSION JOINT

NOTE:
1. EXPANSION JOINTS ARE TO BE CONSTRUCTED AT ALL PC'S AND PT'S OF INTERSECTION RETURNS AND ALL OTHER SHORT RADIUS SECTIONS, CONSTRUCTION JOINTS & AS DIRECTED BY THE ENGINEER.

BITUMINOUS EXPANSION JOINTS - THREE QUARTER INCH (3/4") BITUMINOUS PREMOLDED INORGANIC FIBER EXPANSION JOINTS SHALL BE INSTALLED WHERE NEW SIDEWALK OR CURB AND GUTTER OR DRIVEWAY PAVEMENT ABUTS AN EXISTING CONCRETE WALK, DRIVE, OR CURB WHICH IS TO REMAIN IN PLACE, AND AT NOT LESS THAN NINETY FOOT (90') INTERVALS AT LOCATIONS WHERE CURB REPLACEMENT IS IN EXCESS OF NINETY FEET (90'); AT RADIUS POINTS, AT BOTH SIDES OF FRAMES AND GRATES WHICH FALL IN THE CURB; AND AS DIRECTED BY THE ENGINEER.



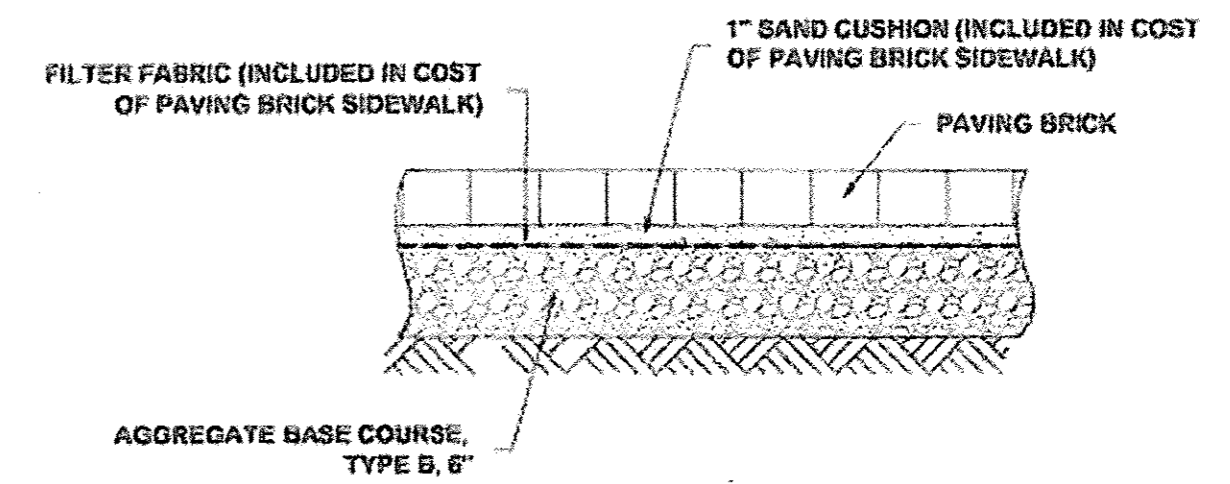
NOTES :

1. PROVIDE 2 - 3/4" DIAMETER, 18" LONG EPOXY COATED SMOOTH DOWEL BARS WITH PLASTIC EXPANSION CAPS AT EACH EXPANSION JOINT.
2. CONTRACTION JOINT - 2" DEEP CONTRACTION JOINTS SHALL BE SAWS AT EQUAL SPACES (NOT EXCEEDING 15 FEET) BETWEEN NORMAL EXPANSION JOINTS, IN THE UPPER 1/3 OF CURB & GUTTERS WITHIN 24 HOURS OF PLACEMENT.
3. THE NEW CURB AND GUTTER SHALL BE BACKFILLED FOR THE FULL-DEPTH OF THE CURB WITH CA-7 OR OTHER STONE APPROVED BY ENGINEER.
4. THE COST OF THE ABOVE SHALL BE INCLUDED IN THE COST OF THE CURB

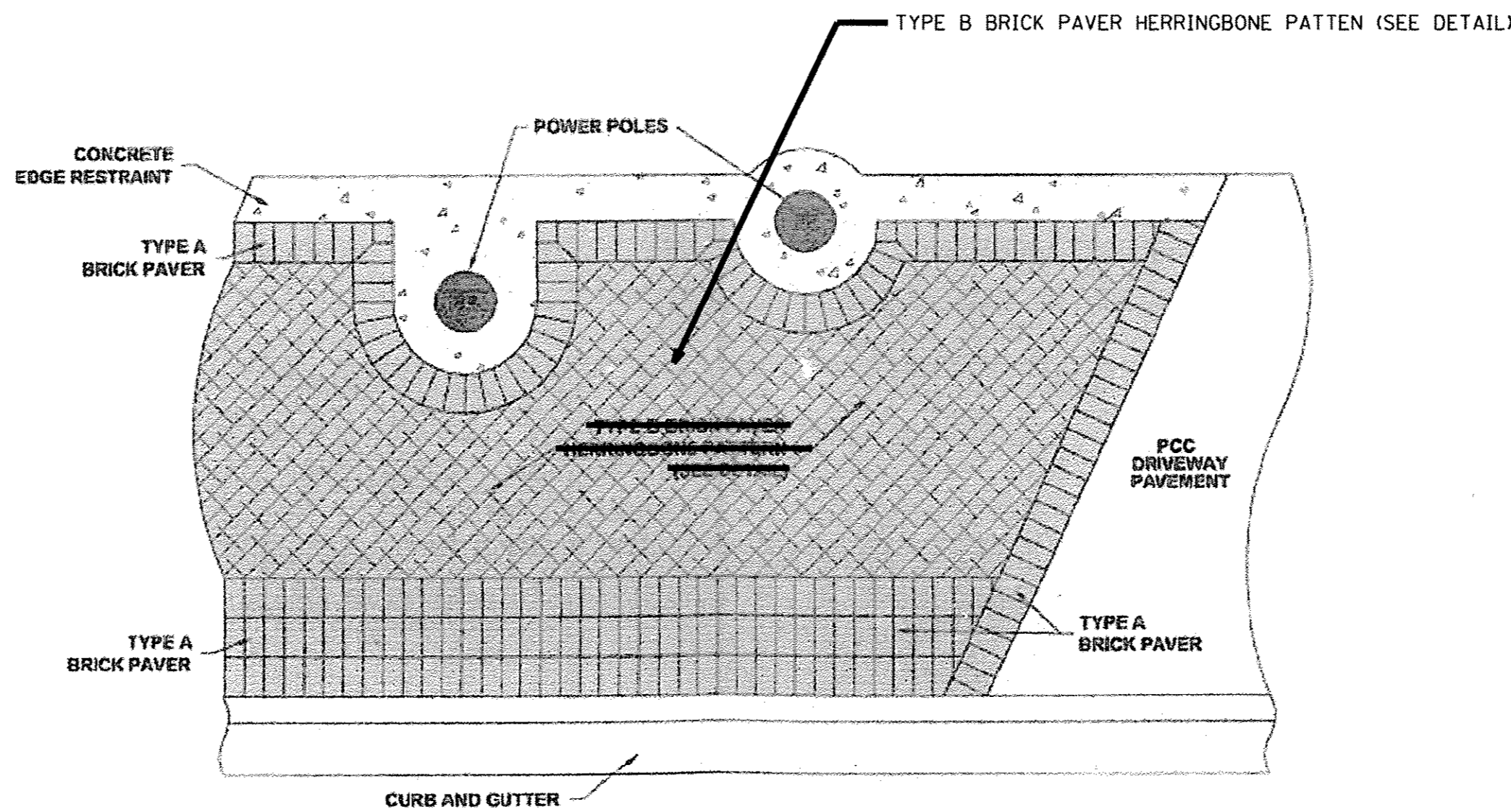
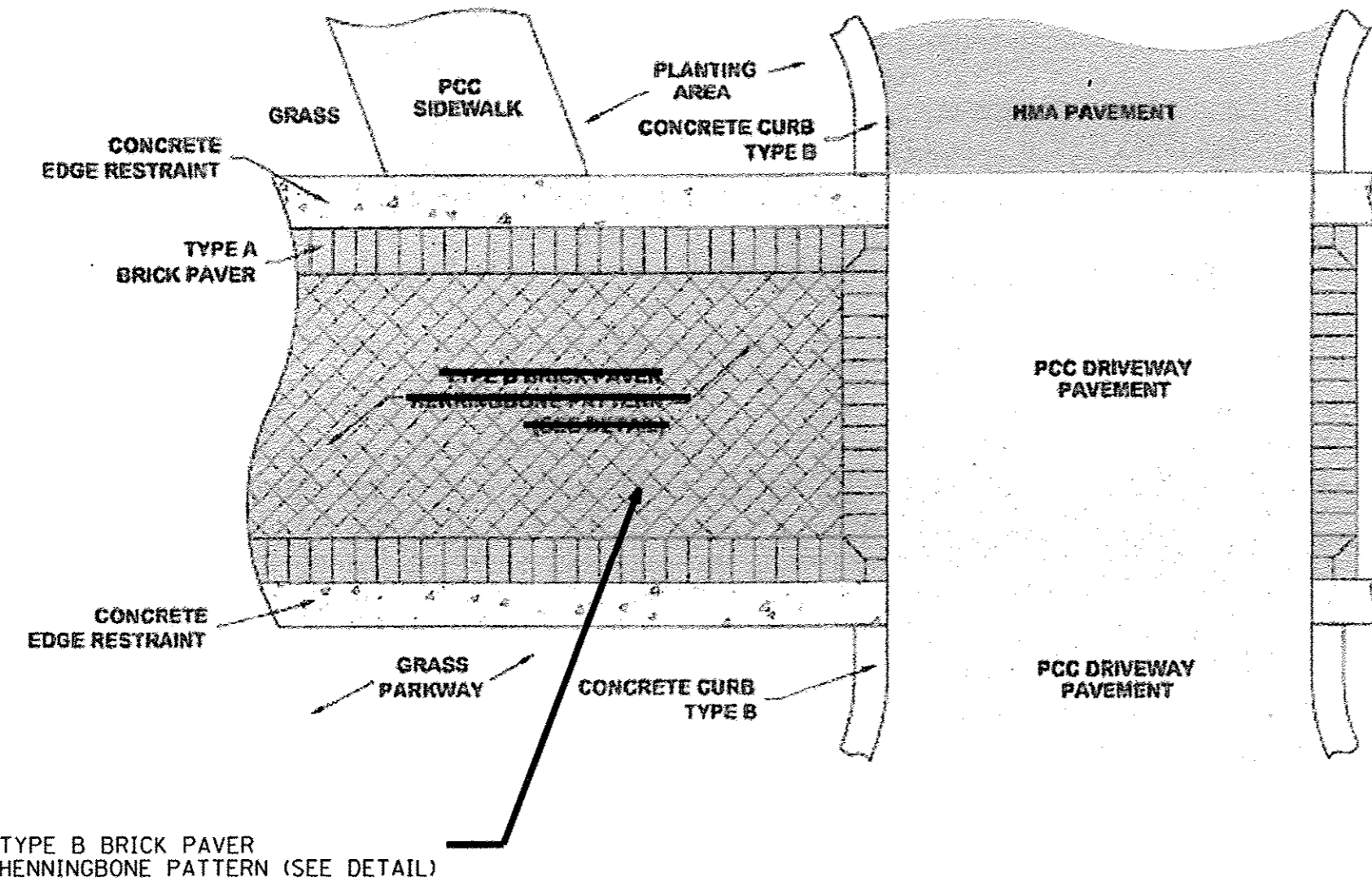
COMBINATION CONCRETE CURB & GUTTER, TYPE B-6.12 OR B-6.18 (MODIFIED)

ADDITIONAL CURB AND GUTTER NOTES

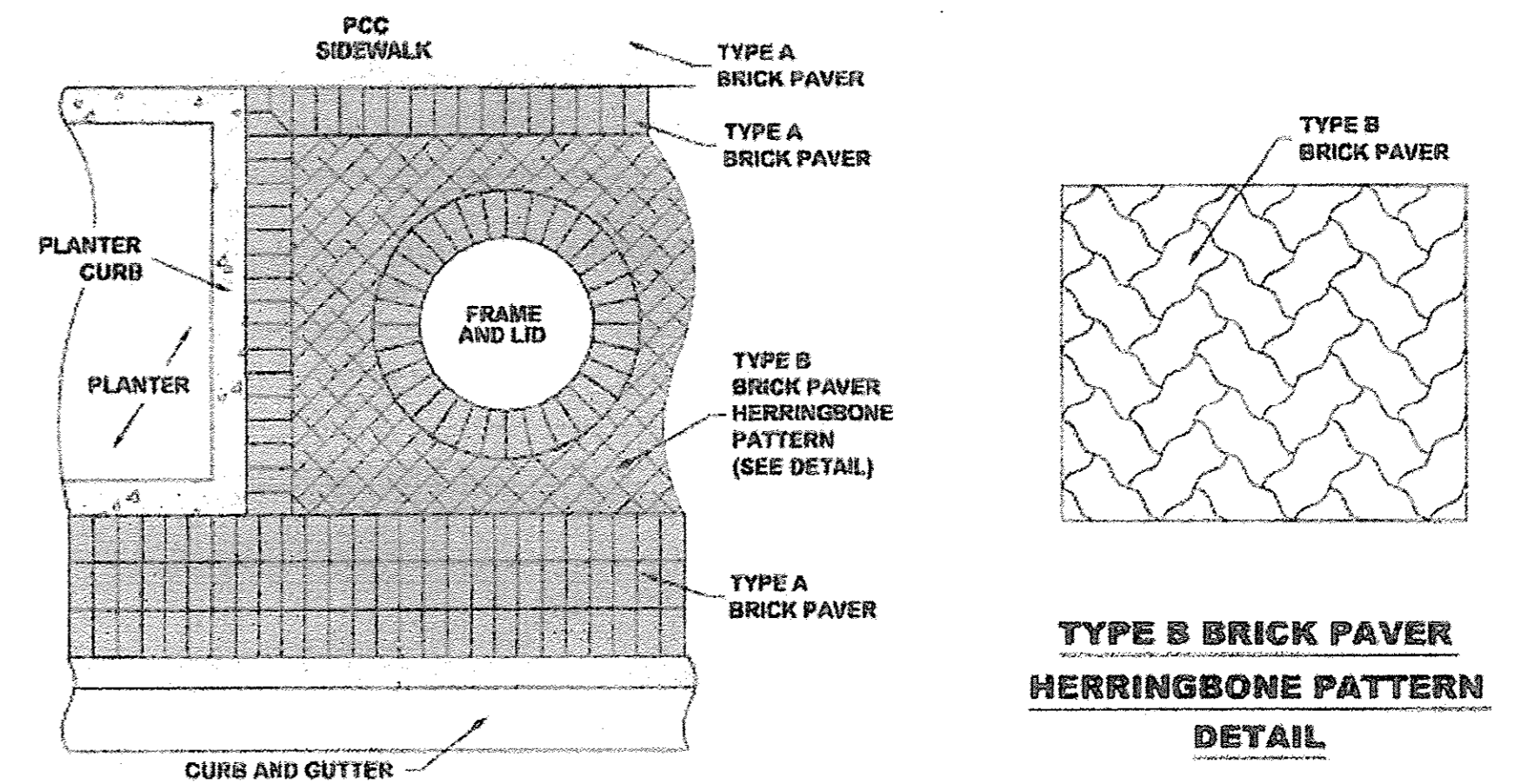
- ① PORTLAND CEMENT BASE COURSE SHALL BE INCLUDED IN COST OF CURB AND GUTTER (MODIFIED)
- ② INCIDENTAL HOT-MIX ASPHALT SURFACING SHALL HAVE A TYPICAL WIDTH OF 6 INCHES AND A DEPTH OF 2 AND A HALF INCHES



PAVING BRICK SIDEWALK



BRICK PAVER SIDEWALK DETAILS



TYPE B BRICK PAVER HENNINGBONE PATTERN DETAIL

COPYRIGHT © 2016, BY BAXTER & WOODMAN, INC.
 STATE OF ILLINOIS - PROFESSIONAL DESIGN FIRM
 LICENSE NO. - 184-00121 - EXPIRES 4/30/2017
 12/17/2016
 ...:\pilotrv\pilotrv\BWL_DeFault.plt
 ...:\CAD\Users\WOODMAN\Projects\CrystalLake\ITPRO\60182-Covered Bike Parking\CADD\60182SHT-Detalls.dgn
 ...:\Corporation\Woodman\Projects\CrystalLake\ITPRO\60182-Covered Bike Parking\CADD\60182SHT-Detalls.dgn

BAXTER & WOODMAN Consulting Engineers	DESIGNED - LJF	REVISED -
	DRAWN - KAR	REVISED -
	CHECKED - TMS	REVISED -
	DATE - 10-07-16	FILE - 160182SHT-Detalls.dgn

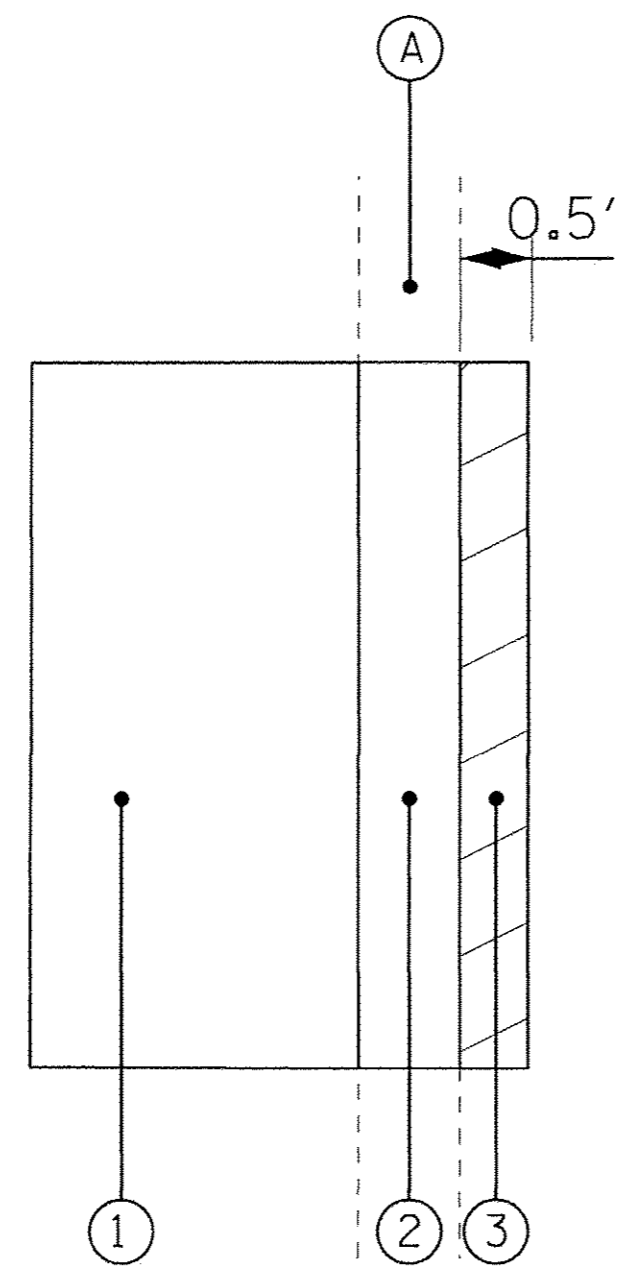
STATE OF ILLINOIS
DEPARTMENT OF TRANSPORTATION

MISCELLANEOUS DETAILS

SCALE: NONE

STA. TO STA.

F.A.P. RTE.	SECTION	COUNTY	TOTAL SHEETS	SHEET NO.
N/A	15-00163-00-MS	COOK	14	10
CONTRACT NO. 61D53				
FED. ROAD DIST. NO. [ILLINOIS] FED. AID PROJECT CMM-400316041				



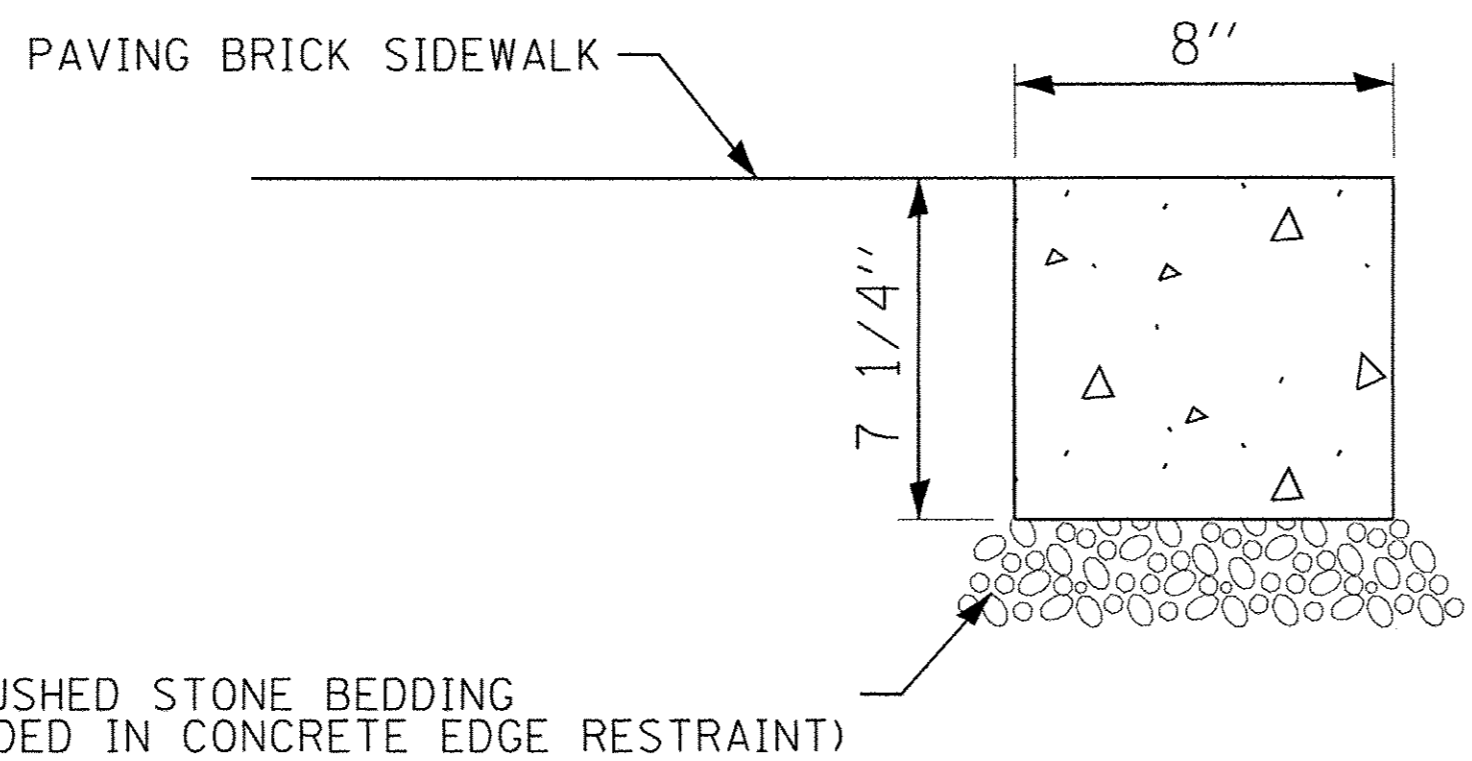
EXISTING LEGEND

Ⓐ EXISTING CURB AND GUTTER

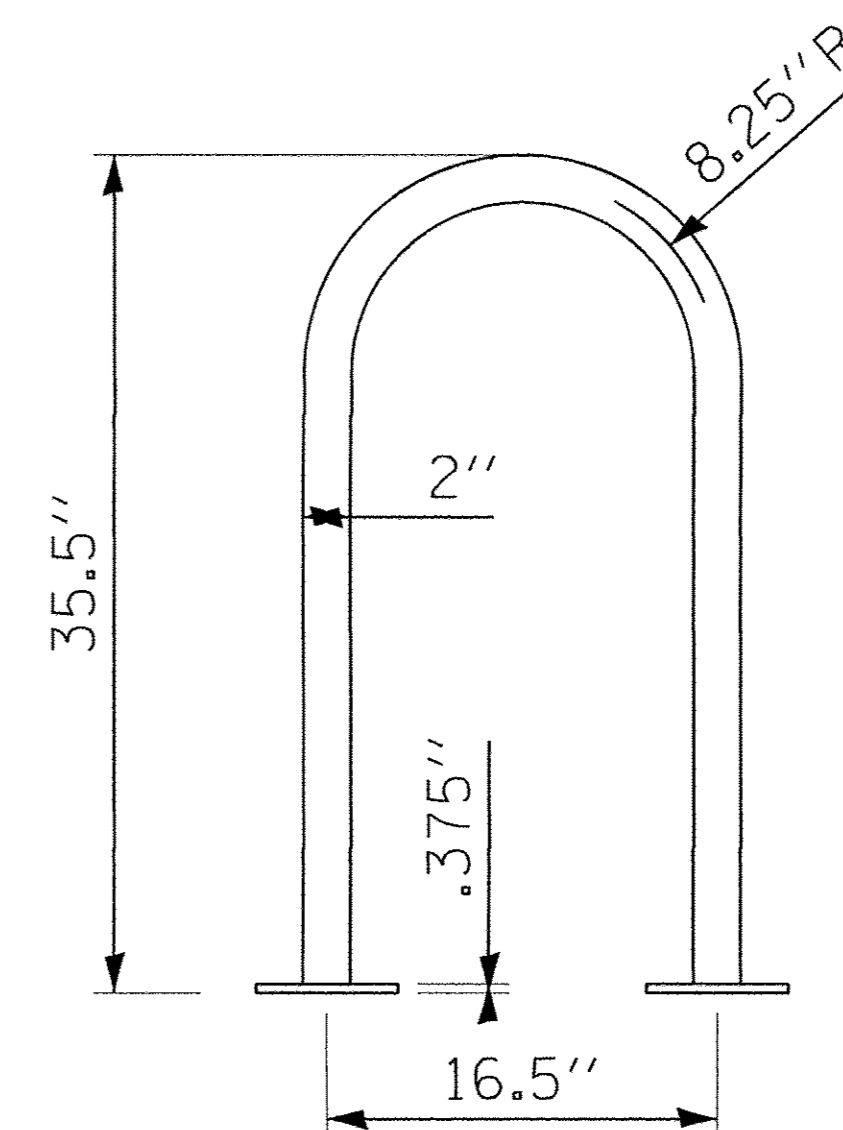
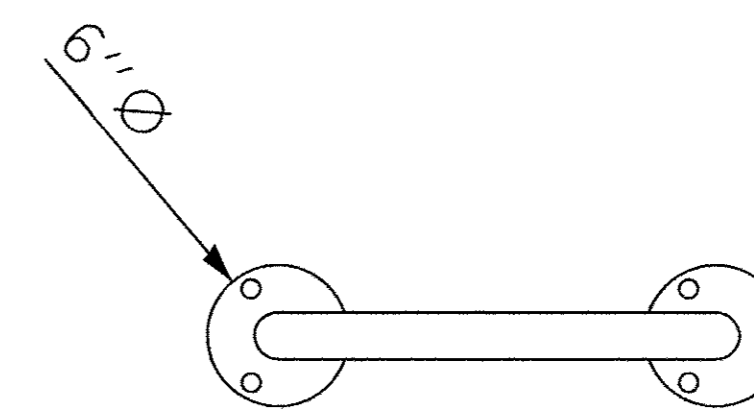
PROPOSED LEGEND

- ① BRICK PAVER SIDEWALK
- ② PROPOSED CONCRETE CURB AND GUTTER
- ③ INCIDENTAL HOT-MIX ASPHALT SURFACING

INCIDENTAL HOT-MIX SURFACING PAVING DETAIL



CONCRETE EDGE RESTRAINT



DUMOR, INC. LOOP BIKE RACK DETAIL

COPYRIGHT © 2016, BY BAXTER & WOODMAN, INC. ... \pilotdrv\pdf-BW_Default.plt
 STATE OF ILLINOIS - PROFESSIONAL DESIGN FIRM ... \CAD\Plots\160182_SHT.dgn
 7/14/17
 \server\backwoods.com\projects\CrystalLake\ITPRO\160182-Covered Bike Parking\CADD\160182SHT-Details.dgn
 12/13/2016 9:41:47 AM

BAXTER & WOODMAN Consulting Engineers	DESIGNED - L.J.F.	REVISED -
	DRAWN - KAR	REVISED -
	CHECKED - TMS	REVISED -
	DATE - 10-07-16	FILE - 160182SHT-Details.dgn

STATE OF ILLINOIS
DEPARTMENT OF TRANSPORTATION

MISCELLANEOUS DETAILS	
SCALE: NONE	STA. TO STA.

F.A.P. RTE.	SECTION	COUNTY	TOTAL SHEETS	SHEET NO.
N/A	15-00163-00-MS	COOK	14	11
FED. ROAD DIST. NO.			ILLINOIS FED. AID PROJECT CMM-4003(804)	
			CONTRACT NO. 61D53	

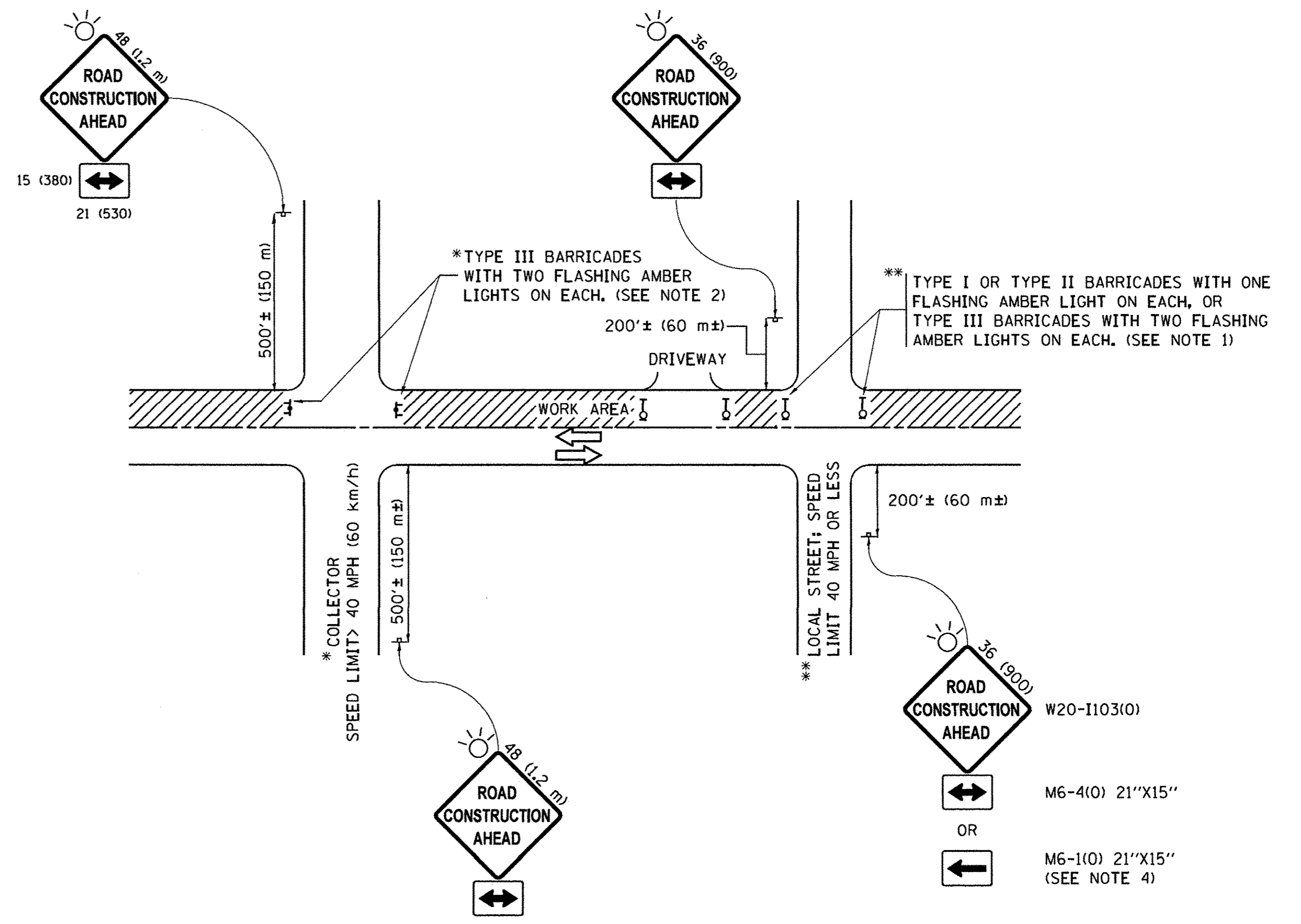
COPYRIGHT © 2005 BY BAKER & WOODMAN, INC.
 STATE OF ILLINOIS - PROFESSIONAL DESIGN FIRM
 LICENSE NO. - 184-00127 - EXPIRES 4/30/2015
 12/15/2016 9:41:50 AM
 ...:\Adopt\A\Def-BW\DefOut.dwg
 ...:\CAD\Plot\A\VE082_Pen.tbl
 ...:\CAD\Plot\A\VE082_Pen.tbl
 ...:\CAD\Plot\A\VE082_Pen.tbl

FILE NAME =	USER NAME = footamj	DESIGNED - L.H.A.	REVISED - A. HOUSEH 10-15-96
pwa\11884EBID\INTEG\111nois.gov\PWIDOT\Documents\DOT Offices\District 1\Projects\Dist
Default	PLOT SCALE = 50,000' / in.	CHECKED -	REVISED - A. SCHUETZE 07-01-13
	PLOT DATE = 9/15/2016	DATE - 06-89	REVISED - A. SCHUETZE 09-15-16

**STATE OF ILLINOIS
 DEPARTMENT OF TRANSPORTATION**

TRAFFIC CONTROL AND PROTECTION FOR SIDE ROADS, INTERSECTIONS, AND DRIVEWAYS			
SCALE: NONE	SHEET 1	OF 1	SHEETS
STA.	TO STA.		

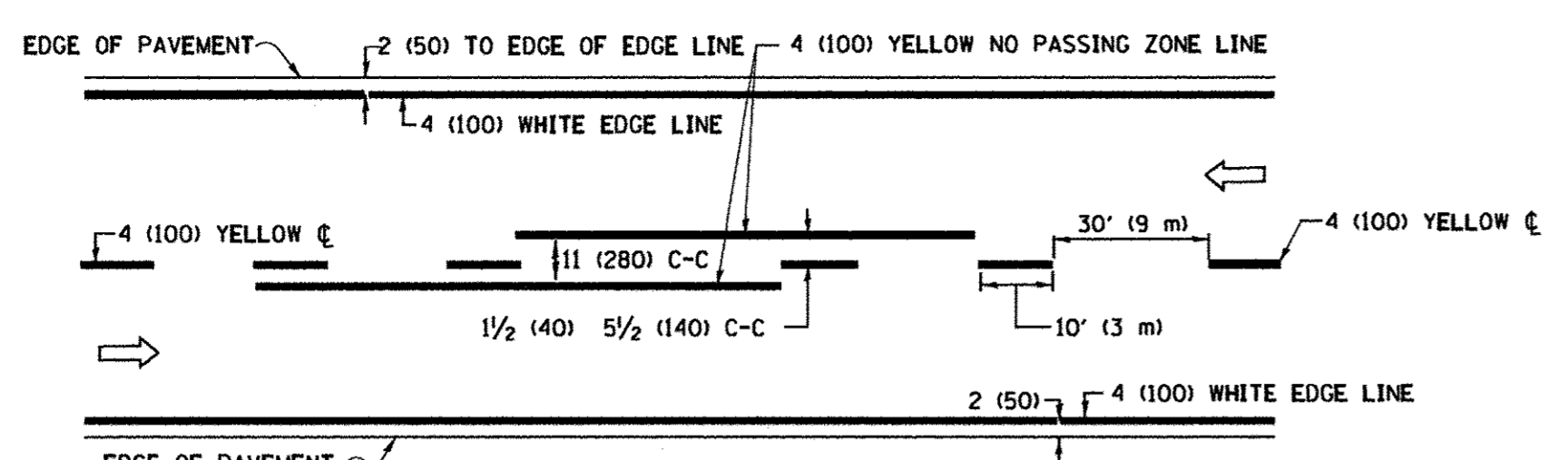
F.A. RTE.	SECTION	COUNTY	TOTAL SHEETS	SHEET NO.
N/A	15-00163-00-MS	COOK	14	12
TC-10			CONTRACT NO. 61053	
ILLINOIS FED. AID PROJECT MM-4003(804)				



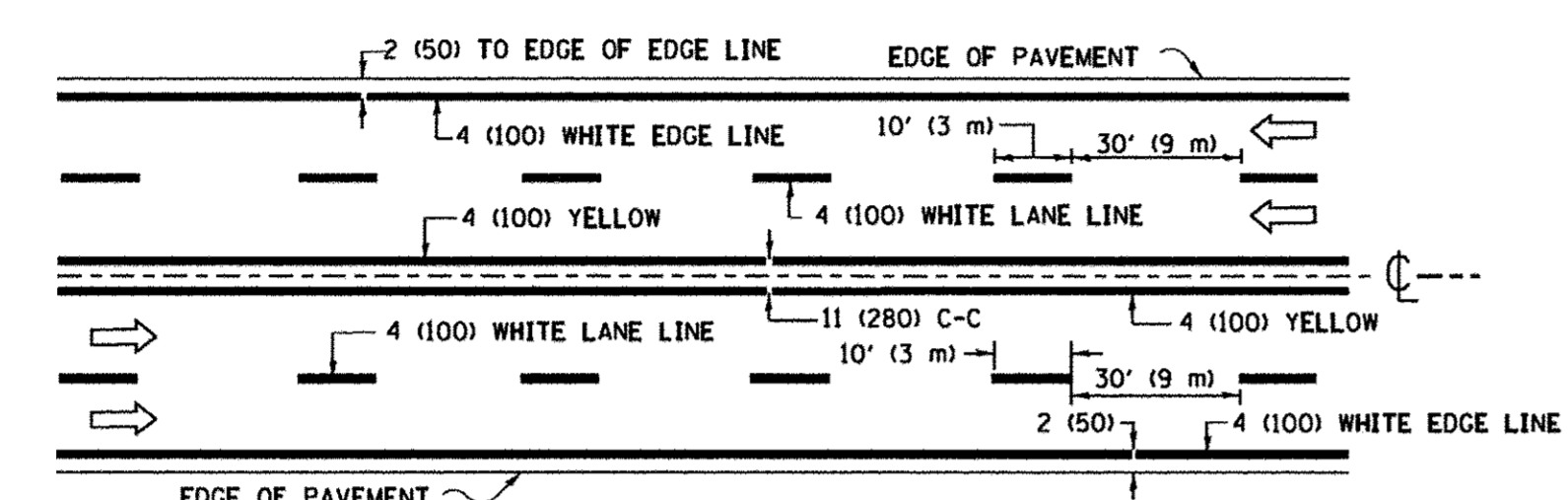
NOTES:

- SIDE ROAD WITH A SPEED LIMIT OF 40 MPH (60 km/h) OR LESS AS SHOWN ON THE DRAWING AND AS DIRECTED BY THE ENGINEER:
 - ONE "ROAD CONSTRUCTION AHEAD" SIGN 36 x 36 (900x900) WITH A FLASHER MOUNTED ON IT APPROXIMATELY 200' (60 m) IN ADVANCE OF THE MAIN ROUTE.
 - THE CLOSED PORTION OF THE MAIN ROUTE SHALL BE PROTECTED BY BLOCKING WITH TYPE I, TYPE II OR TYPE III BARRICADES, 1/3 OF THE CROSS SECTION OF THE CLOSED PORTION.
- SIDE ROAD WITH A SPEED LIMIT GREATER THAN 40 MPH (60 km/h) AS SHOWN ON THE DRAWING AND AS DIRECTED BY THE ENGINEER:
 - ONE "ROAD CONSTRUCTION AHEAD" SIGN 48 x 48 (1.2 m x 1.2 m) WITH A FLASHER MOUNTED ON IT APPROXIMATELY 500' (150 m) IN ADVANCE OF THE MAIN ROUTE.
 - THE CLOSED PORTION OF THE MAIN ROUTE SHALL BE PROTECTED BY BLOCKING WITH TYPE III BARRICADES, 1/2 OF THE CROSS SECTION OF THE CLOSED PORTION.
- CONES MAY BE SUBSTITUTED FOR BARRICADES OR DRUMS AT HALF THE SPACING DURING DAY OPERATIONS. CONES SHALL BE A MINIMUM OF 28 (710) IN HEIGHT.
- WHEN THE SIDE ROAD LIES BETWEEN THE BEGINNING OF THE MAINLINE SIGNING AND THE WORK ZONE, A SINGLE HEADED ARROW (M6-1) SHALL BE USED IN LIEU OF THE DOUBLE HEADED ARROW (M6-4).
- WHEN WORK IS BEING PERFORMED ON A SIDE ROAD OR DRIVEWAY, FOLLOW THE APPLICABLE STANDARD(S), THE DIRECTIONAL ARROW (M6-1 OR M6-4) SHALL BE COVERED OR REMOVED WHEN NO LONGER CONSISTENT WITH THE TRAFFIC CONTROL SET-UP.
- ADVANCE WARNING SIGNS ARE TO BE OMITTED ON DRIVEWAYS UNLESS OTHERWISE SPECIFIED IN THE PLANS OR BY THE ENGINEER.
- THE TRAFFIC CONTROL AND PROTECTION FOR SIDE ROADS, INTERSECTIONS, AND DRIVEWAYS SHALL BE INCLUDED IN THE COST OF SPECIFIED TRAFFIC CONTROL STANDARDS OR ITEMS.

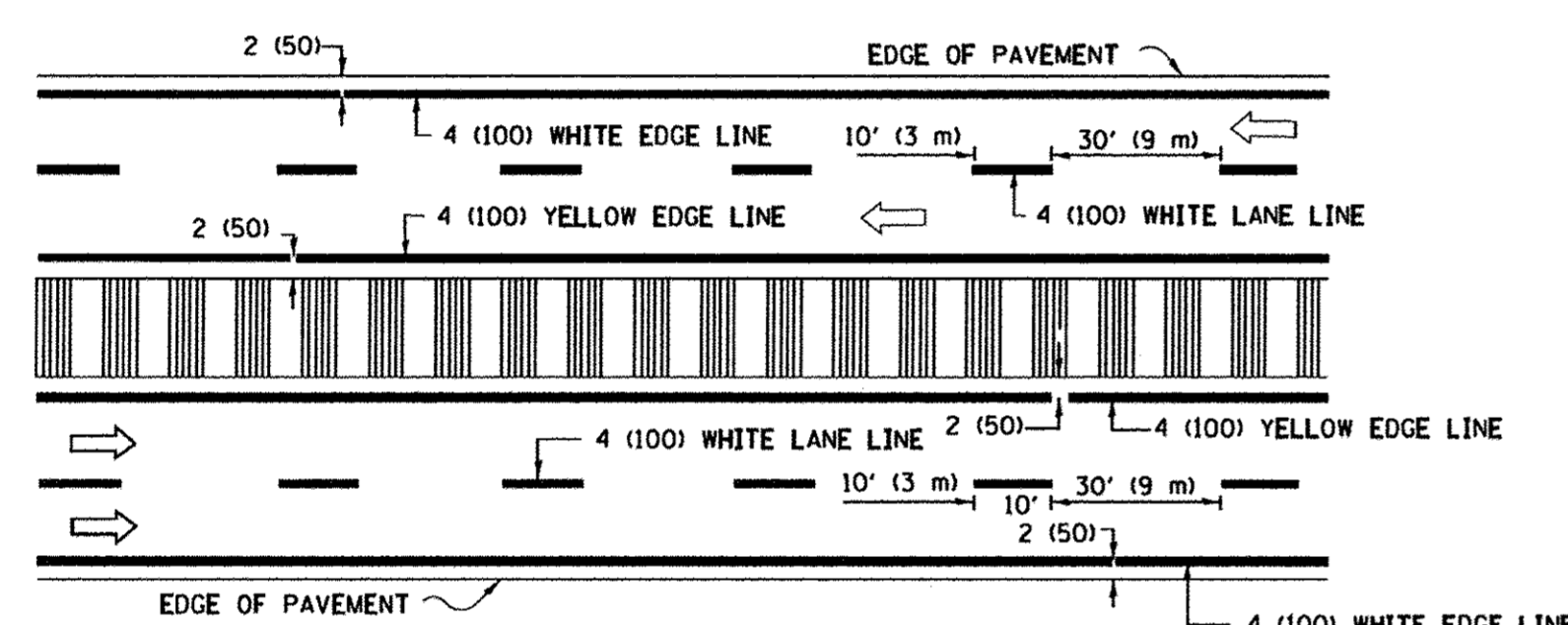
All dimensions are in inches (millimeters)
 unless otherwise shown.



2-LANE ROADWAY

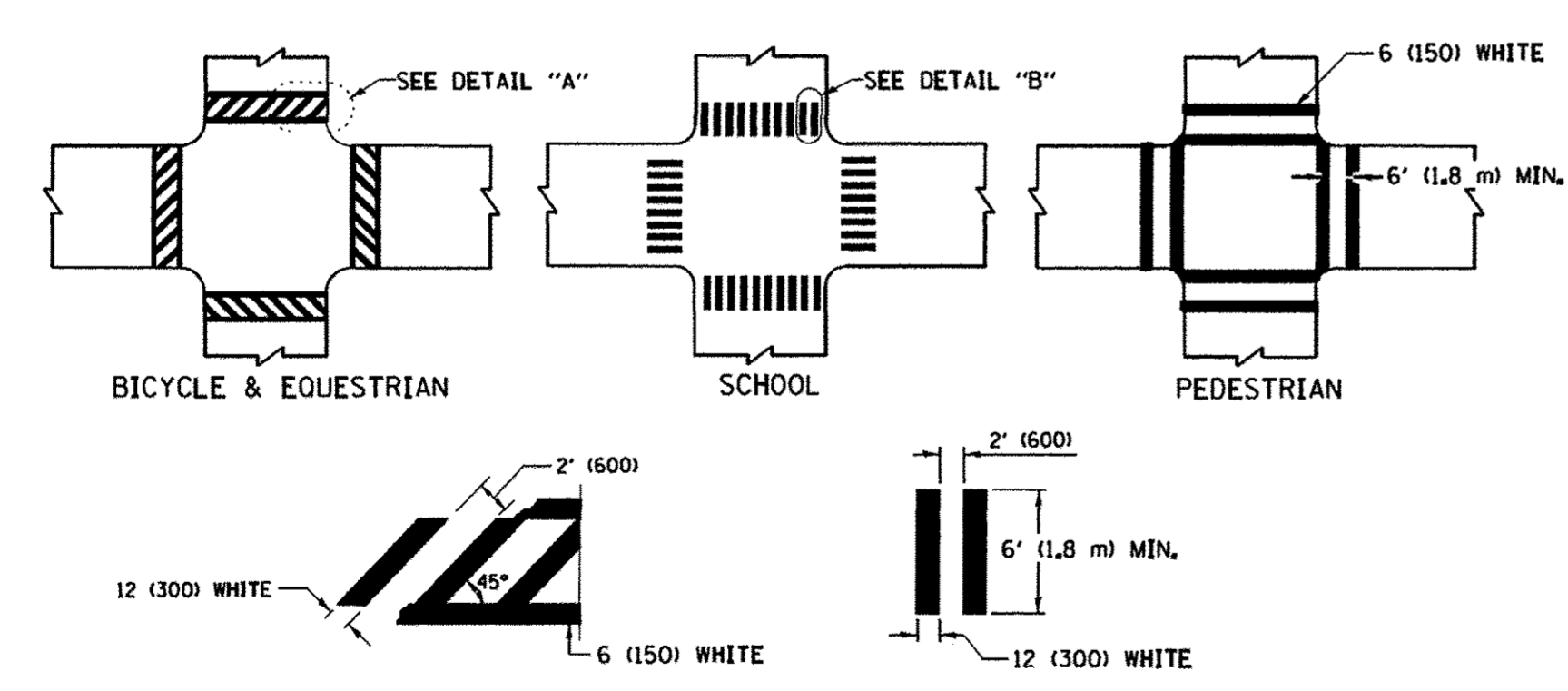


MULTI-LANE UNDIVIDED



MULTI-LANE DIVIDED WITH MEDIAN

TYPICAL LANE AND EDGE LINE MARKING

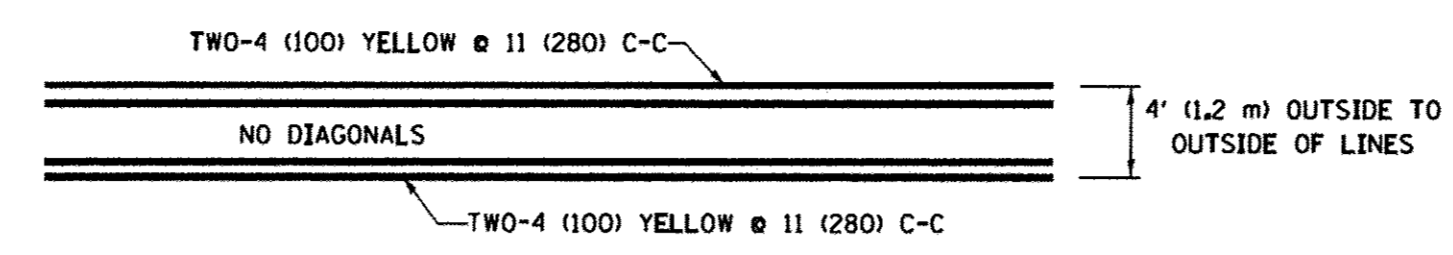


DETAIL "A"

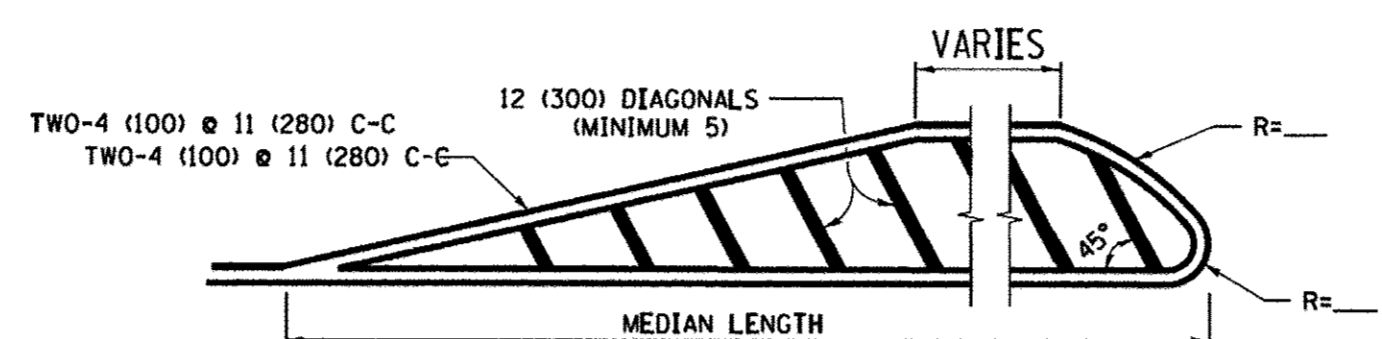
DETAIL "B"

TYPICAL CROSSWALK MARKING

* MARKINGS SHALL BE INSTALLED PARALLEL TO THE CENTERLINE OF THE ROAD WHICH IT CROSSES



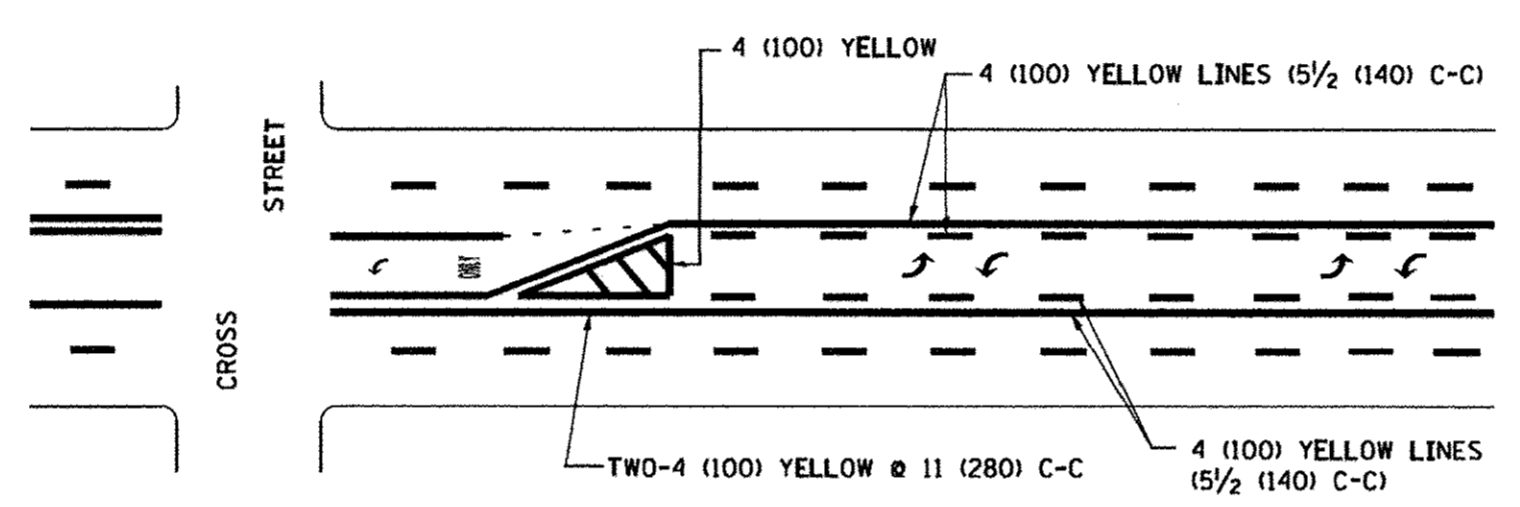
4' (1.2 m) WIDE MEDIANS ONLY



FOR MEDIAN LENGTHS WHERE DIAGONAL SPACING CANNOT BE ATTAINED, USE 5 (FIVE) EQUALLY SPACED DIAGONAL LINES.

DIAGONAL LINE SPACING: 50' (15 m) C-C (LESS THAN 30MPH (50 km/h))
75' (25 m) C-C 30MPH (50 km/h) TO 45MPH (70 km/h)
150' (45 m) C-C (MORE THAN 45MPH (70 km/h))

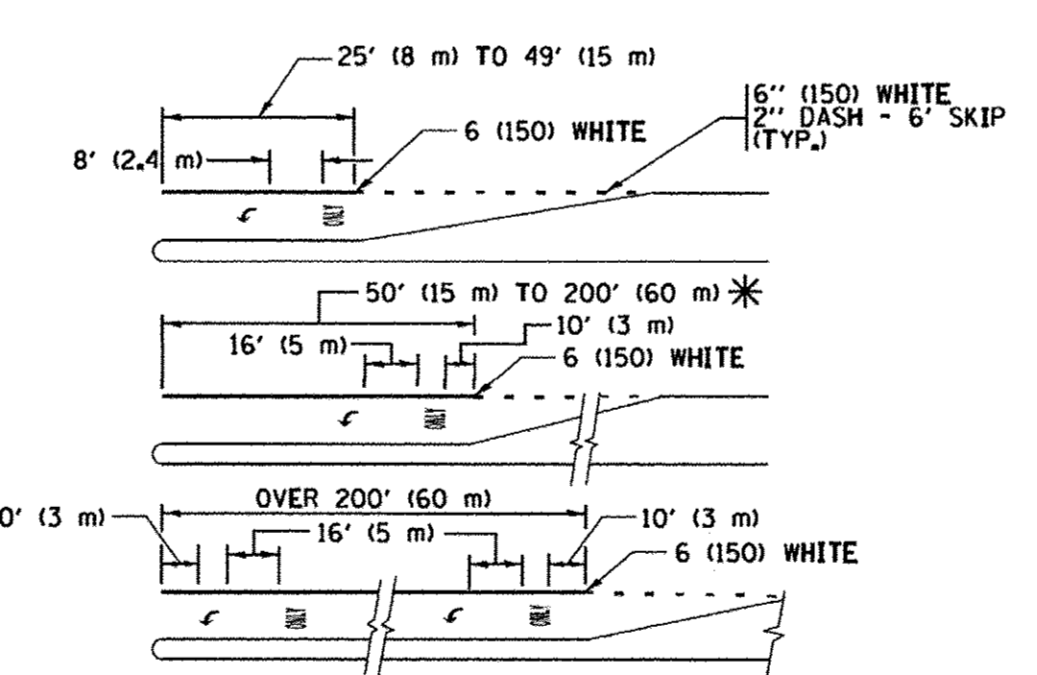
MEDIANS OVER 4' (1.2 m) WIDE



A MINIMUM OF TWO PAIRS OF TURN ARROWS SHALL BE USED, WHITE IN COLOR. ADDITIONAL PAIRS SHALL BE PLACED AT 200' (60 m) TO 300' (90 m) INTERVALS.

MEDIAN WITH TWO-WAY LEFT TURN LANE

TYPICAL PAINTED MEDIAN MARKING

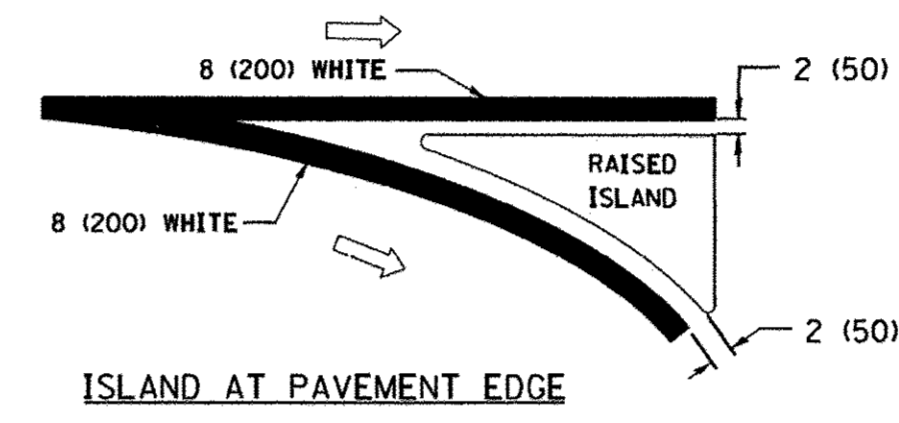
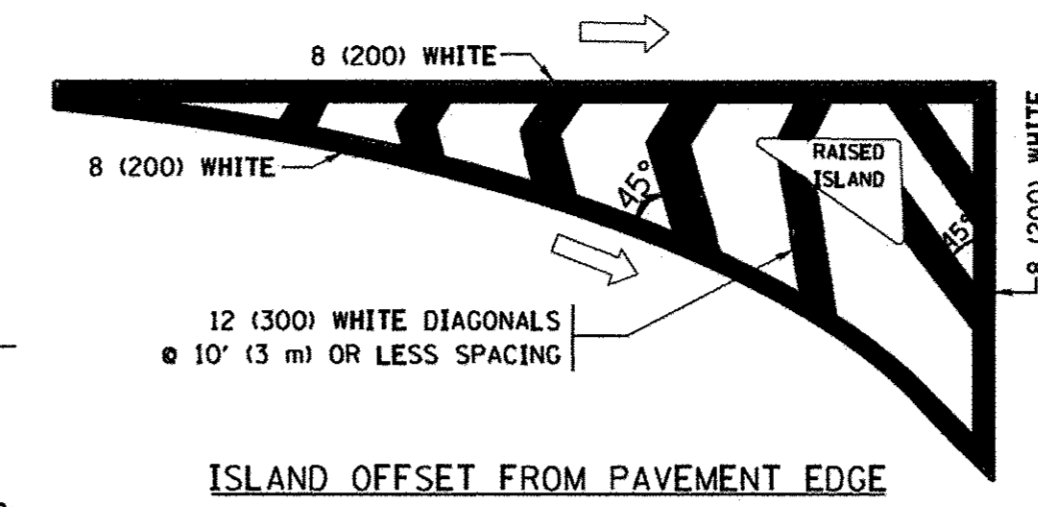


FULL SIZE LETTERS 8' (2.4 m) AND ARROWS SHALL BE USED.
AREA = 15.6 SQ. FT. (1.5 m²) ONLY AREA = 20.8 SQ. FT. (1.9 m²)

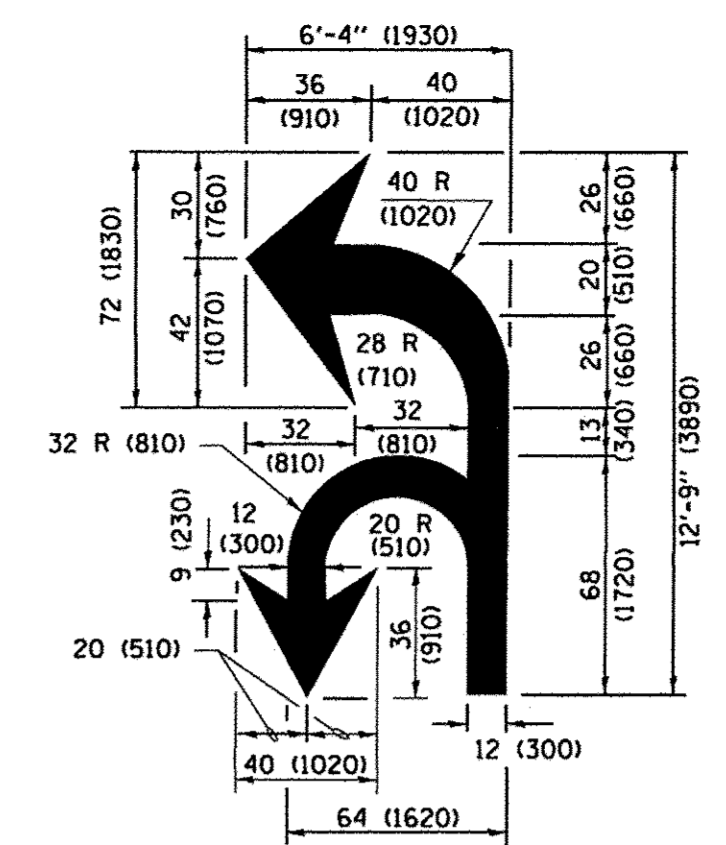
* TURN LANES IN EXCESS OF 400' (120 m) IN LENGTH MAY HAVE AN ADDITIONAL SET OF ARROW - "ONLY" INSTALLED MIDWAY BETWEEN THE OTHER TWO SETS OF ARROW - "ONLY".

TYPICAL LEFT (OR RIGHT) TURN LANE

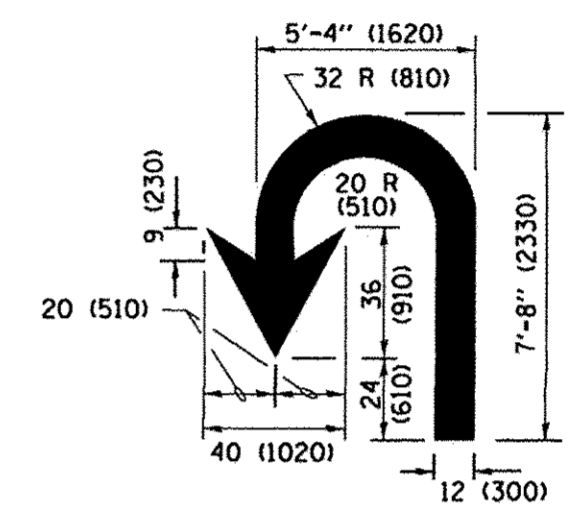
TYPICAL TURN LANE MARKING



TYPICAL ISLAND MARKING



COMBINATION LEFT AND U-TURN



LANE REDUCTION TRANSITION

* LANE REDUCTION ARROWS REQUIRED AT SPEEDS OF 45 MPH OR GREATER OR WHEN SPECIFIED IN PLANS.

D(FT)	SPEED LIMIT
345	30
425	35
500	40
580	45
665	50
750	55

TYPE OF MARKING	WIDTH OF LINE	PATTERN	COLOR	SPACING /REMARKS
CENTERLINE ON 2 LANE PAVEMENT	4 (100)	SKIP-DASH	YELLOW	10' (3 m) LINE WITH 30' (9 m) SPACE
CENTERLINE ON MULTI-LANE UNDIVIDED PAVEMENT	2 @ 4 (100)	SOLID	YELLOW	11 (280) C-C
NO PASSING ZONE LINES: FOR ONE DIRECTION FOR BOTH DIRECTIONS	4 (100) 2 @ 4 (100)	SOLID SOLID	YELLOW YELLOW	5/2 (140) C-C FROM SKIP-DASH CENTERLINE 11 (280) C-C OMIT SKIP-DASH CENTERLINE BETWEEN
LANE LINES	4 (100) 5 (125) ON FREEWAYS	SKIP-DASH SKIP-DASH	WHITE WHITE	10' (3 m) LINE WITH 30' (9 m) SPACE
DOTTED LINES (EXTENSIONS OF CENTER, LANE OR TURN LANE MARKINGS)	SAME AS LINE BEING EXTENDED	SKIP-DASH	SAME AS LINE BEING EXTENDED	2' (600) LINE WITH 6' (1.8 m) SPACE
EDGE LINES	4 (100)	SOLID	YELLOW-LEFT WHITE-RIGHT	OUTLINE MEDIANS IN YELLOW
TURN LANE MARKINGS	6 (150) LINE; FULL SIZE LETTERS & SYMBOLS (8' (2.4m))	SOLID	WHITE	SEE TYPICAL TURN LANE MARKING DETAIL
TWO WAY LEFT TURN MARKING	2 @ 4 (100) 8' (2.4m) LEFT ARROW	SKIP-DASH AND SOLID IN PAIRS	YELLOW WHITE	10' (3 m) LINE WITH 30' (9 m) SPACE FOR SKIP-DASH; 5/2 (140) C-C BETWEEN SOLID LINE AND SKIP-DASH LINE SEE TYPICAL TWO-WAY LEFT TURN MARKING DETAIL
CROSSWALK LINES (PEDESTRIAN) A. DIAGONALS (BIKE & EQUESTRIAN) B. LONGITUDINAL BARS (SCHOOL)	2 @ 6 (150) 12 (300) @ 45° 12 (300) @ 90°	SOLID SOLID SOLID	WHITE WHITE WHITE	NOT LESS THAN 6' (1.8 m) APART 2' (600) APART SEE TYPICAL CROSSWALK MARKING DETAILS.
STOP LINES	24 (600)	SOLID	WHITE	PLACE 4' (1.2 m) IN ADVANCE OF AND PARALLEL TO CROSSWALK, IF PRESENT. OTHERWISE, PLACE AT DESIRED STOPPING POINT, PARALLEL TO CROSSROAD CENTERLINE, WHERE POSSIBLE
PAINTED MEDIANS	2 @ 4 (100) WITH 12 (300) DIAGONALS @ 45° NO DIAGONALS USED FOR 4' (1.2 m) WIDE MEDIANS	SOLID	YELLOW; TWO WAY TRAFFIC WHITE; ONE WAY TRAFFIC	11 (280) C-C FOR THE DOUBLE LINE SEE TYPICAL PAINTED MEDIAN MARKING.
GORE MARKING AND CHANNELIZING LINES	8 (200) WITH 12 (300) DIAGONALS @ 45°	SOLID	WHITE	DIAGONALS: 15' (4.5 m) C-C (LESS THAN 30MPH (50 km/h)) 20' (6 m) C-C 30MPH (50 km/h) TO 45MPH (70 km/h) 30' (9 m) C-C (OVER 45MPH (70 km/h))
RAILROAD CROSSING	24 (600) TRANSVERSE LINES; "RR" IS 6' (1.8 m) LETTERS; 16 (400) LINE FOR "X"	SOLID	WHITE	SEE STATE STANDARD 780001 AREA OF: "R": 3.6 SQ. FT. (0.33 m ²) EACH "X": 54.0 SQ. FT. (5.0 m ²)
SHOULDER DIAGONALS (REQUIRED FOR SHOULDERS ≥ 8')	12 (300) @ 45°	SOLID	WHITE - RIGHT YELLOW - LEFT	50' (15 m) C-C (LESS THAN 30MPH (50 km/h)) 75' (25 m) C-C (30 MPH (50 km/h) TO 45MPH (70 km/h)) 150' (45 m) C-C (OVER 45MPH (70 km/h))
U TURN ARROW	SEE DETAIL	SOLID	WHITE	16.3 SF
2 ARROW COMBINATION LEFT AND U TURN	SEE DETAIL	SOLID	WHITE	30.4 SF

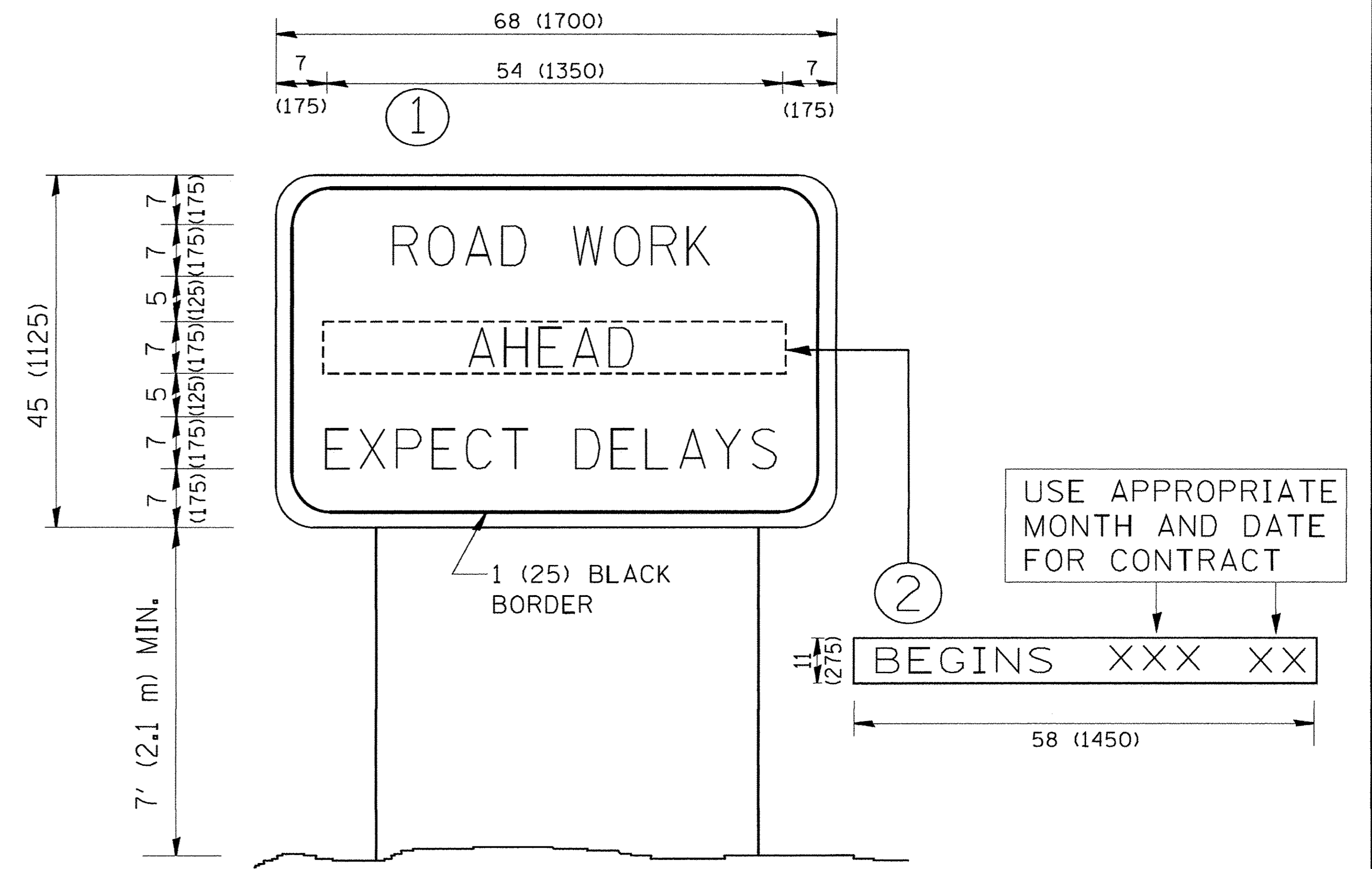
FOR FURTHER DETAILS ON PAVEMENT MARKING REFER TO STANDARD SPECIFICATIONS FOR ROAD AND BRIDGE CONSTRUCTION AND STATE STANDARD 780001.

All dimensions are in inches (millimeters) unless otherwise shown.

COPYRIGHT © 2006 BY BAXTER & WOODMAN, INC.
 STATE OF ILLINOIS - PROFESSIONAL DESIGN FIRM
 LICENSE NO. - 184-00127 - EXPIRES 4/30/2015
 12/15/2016
 \\cadd\p\proj\10082-Covered Bike For Kings\CADD\10082-DISTRICT ONE DETAILS - TC.dgn
 USER: jba
 PLOT SCALE = 50,000' / 1"

FILE NAME =	USER NAME = footemj	DESIGNED - EVERS	REVISED - C. JUCIUS 09-09-09	STATE OF ILLINOIS DEPARTMENT OF TRANSPORTATION
pww\11084EBID\INTEG\111084EBID\WIDOT\Documents\DOT Offices\District 1\Projects\Distric	ORAWN\CADD\cadd\CAD\shhets\1013.dgn	CHECKED -	REVISED - C. JUCIUS 07-01-13	
Default	PLOT DATE = 4/13/2016	DATE - 03-19-90	REVISED - C. JUCIUS 12-21-15	
			REVISED - C. JUCIUS 04-12-16	

DISTRICT ONE TYPICAL PAVEMENT MARKINGS		F.A. RTE.	SECTION	COUNTY	TOTAL SHEETS	SHEET NO.
SCALE: NONE	SHEET 1 OF 1 SHEETS	N/A	15-00163-00-MS	COOK	14	13
		TC-13		CONTRACT NO. 61D53		
		ILLINOIS FED. AID PROJECT MM-4003(B04)				



NOTES:

1. USE BLACK LETTERING ON ORANGE BACKGROUND.
2. ERECT SIGNS IN ADVANCE OF THE LOCATION FOR THE "ROAD CONSTRUCTION AHEAD" SIGN AT LOCATIONS AS DIRECTED BY THE ENGINEER.
3. ERECT SIGN ① WITH INSTALLED PANEL ② ONE WEEK PRIOR TO THE START OF CONSTRUCTION.
4. REMOVE PANEL ② SOON AFTER THE START OF CONSTRUCTION.
5. SEE SPECIAL PROVISION FOR "TEMPORARY INFORMATION SIGNING" FOR ADDITIONAL INFORMATION.
6. ONE SIGN ASSEMBLY EQUALS 25.70 SQ. FT. (2.3 SQ. M.)
7. SHALL BE PAID FOR AS TEMPORARY INFORMATION SIGNING.

ALL DIMENSIONS ARE IN INCHES (MILLIMETERS) UNLESS OTHERWISE SHOWN.

COPYRIGHT © 2004 BY BAXTER & WOODMAN, INC. ...
 LICENSE NO. 189-00023 EXPIRES 4/30/2005
 12/13/2005 9:48:44 AM

FILE NAME = W:\diststd\22x34\to22.dgn	USER NAME = gagienobt	DESIGNED - DRAWN -	REVISED - REVISED -
PLOT SCALE = 50.000 ' / IN.	CHECKED -	REVISED - R. MIRS 09-15-97	REVISED - R. MIRS 12-11-97
PLOT DATE = 1/4/2008	DATE -	REVISED - T. RAMMACHER 02-02-99	REVISED - C. JUCIUS 01-31-07

**STATE OF ILLINOIS
DEPARTMENT OF TRANSPORTATION**

ARTERIAL ROAD INFORMATION SIGN			
SCALE: NONE	SHEET NO. 1 OF 1 SHEETS	STA.	TO STA.

F.A. RTE. N/A	SECTION 15-00163-00-MS	COUNTY COOK	TOTAL SHEETS 14	SHEET NO. 14
TC-22		CONTRACT NO. 61053		
FED. ROAD DIST. NO. 1 ILLINOIS FED. AID PROJ. ECTMM-4003(804)				