

**INDEX OF SHEETS**

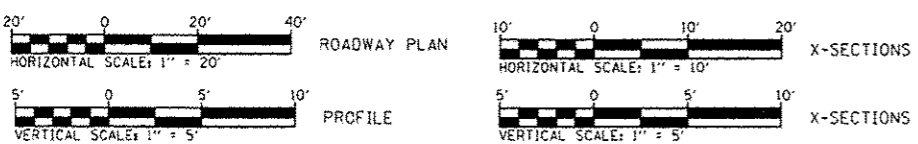
- 1 COVER SHEET
- 2 GENERAL NOTES & COMMITMENTS
- 3-20 SUMMARY OF QUANTITIES
- 21-23 TYPICAL SECTIONS
- 24-34 SCHEDULES
- 35-36 SITE PLAN
- 37-38 ALIGNMENT, TIES AND BENCHMARKS
- 39-53 PLAN AND PROFILE SHEETS
- 54-56 VISUAL BARRIER PLAN AND PROFILE SHEETS
- 57-63 CONSTRUCTION STAGING & MAINTENANCE OF TRAFFIC
- 64-69 REMOVAL PLANS
- 70 WASTE DISPOSAL PLAN
- 71-77 EROSION CONTROL PLANS
- 78 GRADING PLAN - DETENTION POND
- 79-80 STATUS OF UTILITIES TO BE ADJUSTED
- 81-83 RIGHT-OF-WAY PLANS
- 84-86 INTERSECTION DETAILS
- 87-94 PAVEMENT MARKING PLANS
- 95-103 SIGNING PLANS
- 104-113 LANDSCAPING PLANS
- 114-120A TRAFFIC SIGNAL PLANS
- 121-123 DRAINAGE OUTLET STRUCTURE DETAILS
- 124 MISCELLANEOUS DETAIL SHEET
- 125-151 CROSS SECTIONS

**IDOT STANDARDS**

000001-06	602406-07	701301-04	814001-03
001001-02	602411-05	701427-05	814006-02
001006	602416-05	701602-08	821101-02
280001-07	602421-05	701606-10	851001-01
353001-04	602601-04	701611-01	862001-01
420001-08	602701-02	701701-10	873001-02
420701-03	604001-04	701801-06	876001-04
424001-09	604006-05	701901-06	877012-05
424006-02	604036-03	704001-08	878001-10
424011-03	606001-06	720001-01	880001-01
424021-03	606101-05	720006-04	880006-01
424026-01	606201-03	720016-03	B.L.R. 17-4
424031-01	606301-04	728001-01	B.L.R. 21-9
442201-03	641006-01	731001-01	B.L.R. 22-7
542301-03	701001-02	780001-05	
602301-04	701006-05	781001-04	
602306-03	701101-05	782001-01	
602401-03	701106-02	805001-01	

**STANDARD SYMBOLS**

- EXISTING MANHOLE
- EXISTING INLET
- ⊕ FIRE HYDRANT
- ⊕ UTILITY POLE
- ⊕ STREET LIGHT
- ⊕ EXISTING SIGNAL CONTROLLER
- TREE
- PROPOSED MANHOLE
- PROPOSED INLET
- EXISTING SANITARY SEWER
- EXISTING STORM SEWER
- PROPOSED STORM SEWER
- EXISTING OVERHEAD LINES
- EXISTING GAS MAIN
- EXISTING WATER MAIN
- EXISTING TELEPHONE CABLE
- EXISTING UNDERGROUND ELECTRIC LINES



FULL SIZE PLANS HAVE BEEN PREPARED USING STANDARD ENGINEERING SCALES. REDUCED PLANS WILL NOT CONFORM TO STANDARD SCALES. IN MAKING MEASUREMENTS ON REDUCED PLANS, THE ABOVE SCALES MAY BE USED.

**UTILITIES**

- CITY WATER, LIGHT AND POWER - WATER DEPT.  
401 N. 11th STREET  
SPRINGFIELD, IL. 62702  
ATTENTION: LORI COX 789-2323
- CITY WATER, LIGHT AND POWER - ELECTRIC DEPT.  
1008 EAST MILLER  
SPRINGFIELD, IL. 62702  
ATTENTION: LARRY MINCH 757-8520 x 2159
- A.T.&T.  
1640 E. HAZEL DELL  
SPRINGFIELD, IL. 62703  
ATTENTION: JEFF GOAD 789-5543
- COMCAST COMMUNICATIONS  
711 SOUTH DIRKSEN PARKWAY  
SPRINGFIELD, IL. 62703  
ATTENTION: DAVE BLY 527-2967
- SPRINGFIELD METRO SANITARY DISTRICT  
3017 N. 8th STREET  
SPRINGFIELD, IL. 62707  
ATTENTION: GREGG HUMPHREY 528-0491
- AMEREN CILCO  
825 NORTH MACARTHUR  
SPRINGFIELD, IL. 62702  
ATTENTION: RICK COMBS 753-5187 (GAS)  
ATTENTION: SHERRIE GARY 753-5182 (ELECTRIC)
- CITY OF SPRINGFIELD - PUBLIC WORKS  
300 S. 7th STREET  
ROOM 201 MUNICIPAL CENTER WEST  
SPRINGFIELD, IL 62701  
ATTENTION: NATHAN BOTTOM 789-2255

CALL J.U.L.I.E. PRIOR TO ANY CONSTRUCTION OR EXCAVATION  
JOINT UTILITY LOCATION INFORMATION FOR EXCAVATION  
1-800-892-0123

STATE OF ILLINOIS 03-03-2017 LETTING ITEM 133

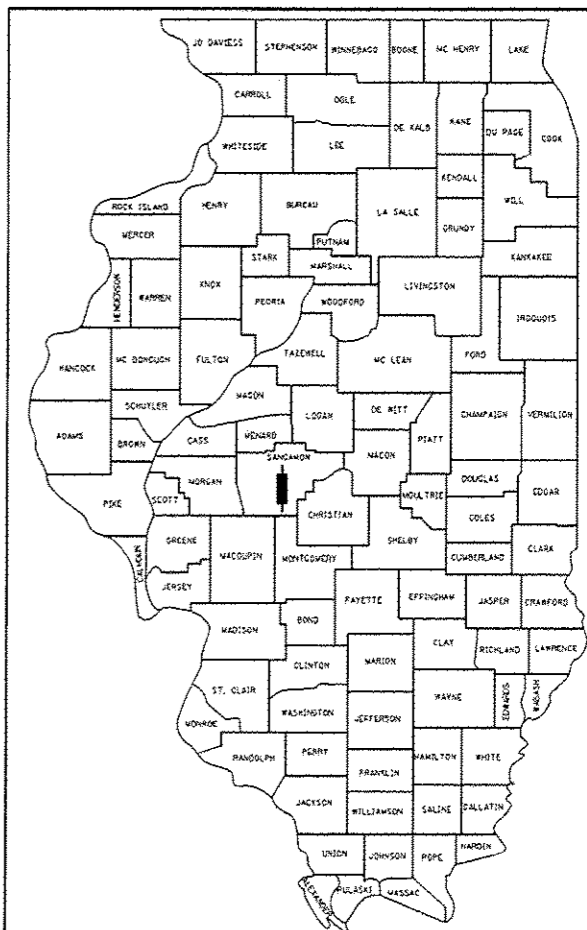
CITY OF SPRINGFIELD

151 + 1 = 152 TOTAL SHEETS

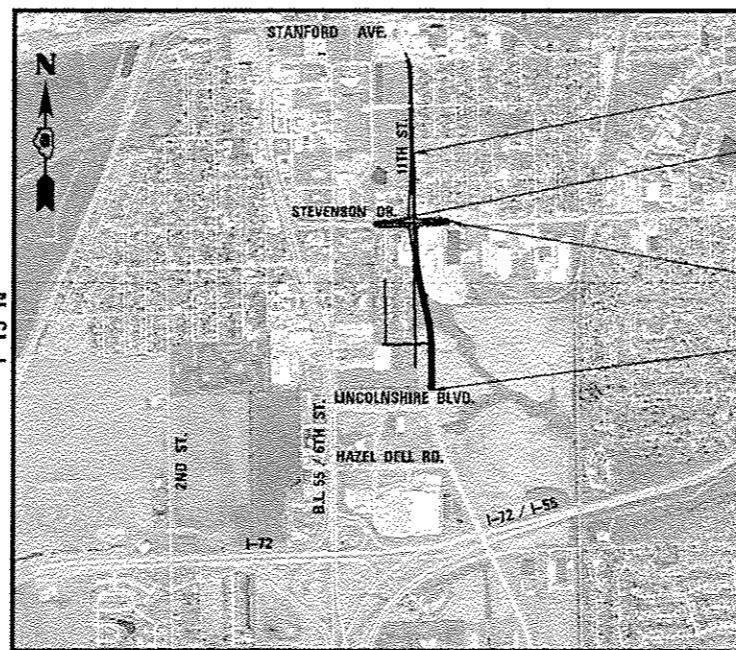
# PLANS FOR PROPOSED HIGHWAY DEMONSTRATION PROGRAM F.A.P. ROUTE 663 (STEVENSON DRIVE) F.A.U. ROUTE 8031 (ELEVENTH STREET)

PROJECT HPP-4053 (004)  
SECTION 95-00361-04-PV  
JOB NUMBER D-96-200-96  
SANGAMON COUNTY  
C-96-213-96

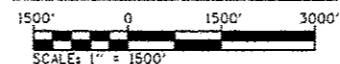
F.A.U. RTE.	SECTION	COUNTY	TOTAL SHEETS	SHEET NO.
8031	95-00361-04-PV	SANGAMON	151	1
ILLINOIS			CONTRACT NO. 93688	



LOCATION OF SECTION INDICATED THUS: —



**LOCATION MAP**



F.A.P. 663 (STEVENSON DRIVE)  
DESIGN CLASS : OTHER PRINCIPAL ARTERIAL; DESIGN YEAR (2030) DHV = 3150  
DESIGN SPEED: 40 MPH  
NET LENGTH OF PROJECT = 1,182.97 FEET = 0.224 MILES

F.A.U. 8031 (ELEVENTH STREET)  
DESIGN CLASS : URBAN - MINOR ARTERIAL; DESIGN YEAR (2030) DHV = 2965  
DESIGN SPEED: 40 MPH  
NET LENGTH OF PROJECT = 3,808.65 FEET = 0.721 MILES

ROADWAY IMPROVEMENTS END (FAU 8031)  
STA. 195+89.80 (ELEVENTH STREET)

PROJECT BEGINS (FAP 663)  
STA. 7+45.42 (STEVENSON DRIVE)

PROJECT ENDS (FAP 663)  
STA. 19+28.39 (STEVENSON DRIVE)

ROADWAY IMPROVEMENTS BEGIN (FAU 8031)  
STA. 157+84.15 (ELEVENTH STREET)



SEAL

SIGNATURE: *Stanley P. Hansen*  
DATE SIGNED: December 19, 2016  
LICENSE EXPIRATION DATE: November 30, 2017



License No. 184-000613 Copyright CMT, Inc.

APPROVED *December 19, 2016*

*Robin Paulson*  
CITY ENGINEER, SPRINGFIELD, ILLINOIS

PASSED *Jan 19, 2017*

*Scott Decker*  
DISTRICT SIX ENGINEER OF LOCAL ROADS & STREETS

PASSED *January 19, 2017*

*Ron Buchanan*  
DISTRICT CONSTRUCTION ENGINEER

Releasing For Bld Based on Limited Review *Jan 19, 2017*

*Jeffrey M. South*  
REGION FOUR ENGINEER

STATE OF ILLINOIS  
DEPARTMENT OF TRANSPORTATION

PRINTED BY THE AUTHORITY  
OF THE STATE OF ILLINOIS

**SUMMARY OF QUANTITIES**

SP	CODE NO.	ITEM DESCRIPTION	UNIT	TOTAL QUANTITY	CONSTRUCTION CODE		
					0001	0021	0031
△	78000600	THERMOPLASTIC PAVEMENT MARKING - LINE 12"	FOOT	865	865	0	0
△	78000650	THERMOPLASTIC PAVEMENT MARKING - LINE 24"	FOOT	333	333	0	0
△	78100100	RAISED REFLECTIVE PAVEMENT MARKER	EACH	40	40	0	0
△	78200020	CURB REFLECTORS	EACH	100	100	0	0
△	80500100	SERVICE INSTALLATION, TYPE A	EACH	1	0	1	0
△	* 81028350	UNDERGROUND CONDUIT, PVC, 2" DIA.	FOOT	3,906	0	3,906	0
△	* 81028360	UNDERGROUND CONDUIT, PVC, 2 1/2" DIA.	FOOT	29	0	29	0
△	* 81028370	UNDERGROUND CONDUIT, PVC, 3" DIA.	FOOT	507	0	507	0
△	* 81028390	UNDERGROUND CONDUIT, PVC, 4" DIA.	FOOT	22	0	22	0
△	* 81028400	UNDERGROUND CONDUIT, PVC, 5" DIA.	FOOT	155	0	155	0
△	* 81400100	HANDHOLE	EACH	20	0	20	0
△	* 81400300	DOUBLE HANDHOLE	EACH	1	0	1	0
△	* 81702450	ELECTRIC CABLE IN CONDUIT, 600V (XLP-TYPE USE) 3-1/C NO. 10	FOOT	1,072	0	1,072	0
△	* 82102400	LUMINAIRE, SODIUM VAPOR, HORIZONTAL MOUNT, 400 WATT	EACH	4	0	4	0
△	* 82103400	LUMINAIRE, SODIUM VAPOR, HORIZONTAL MOUNT, PHOTO CELL CONTROL, 400 WATT	EACH	4	0	4	0

\* SP = SEE SPECIAL PROVISIONS  
 △ SPECIALTY ITEMS



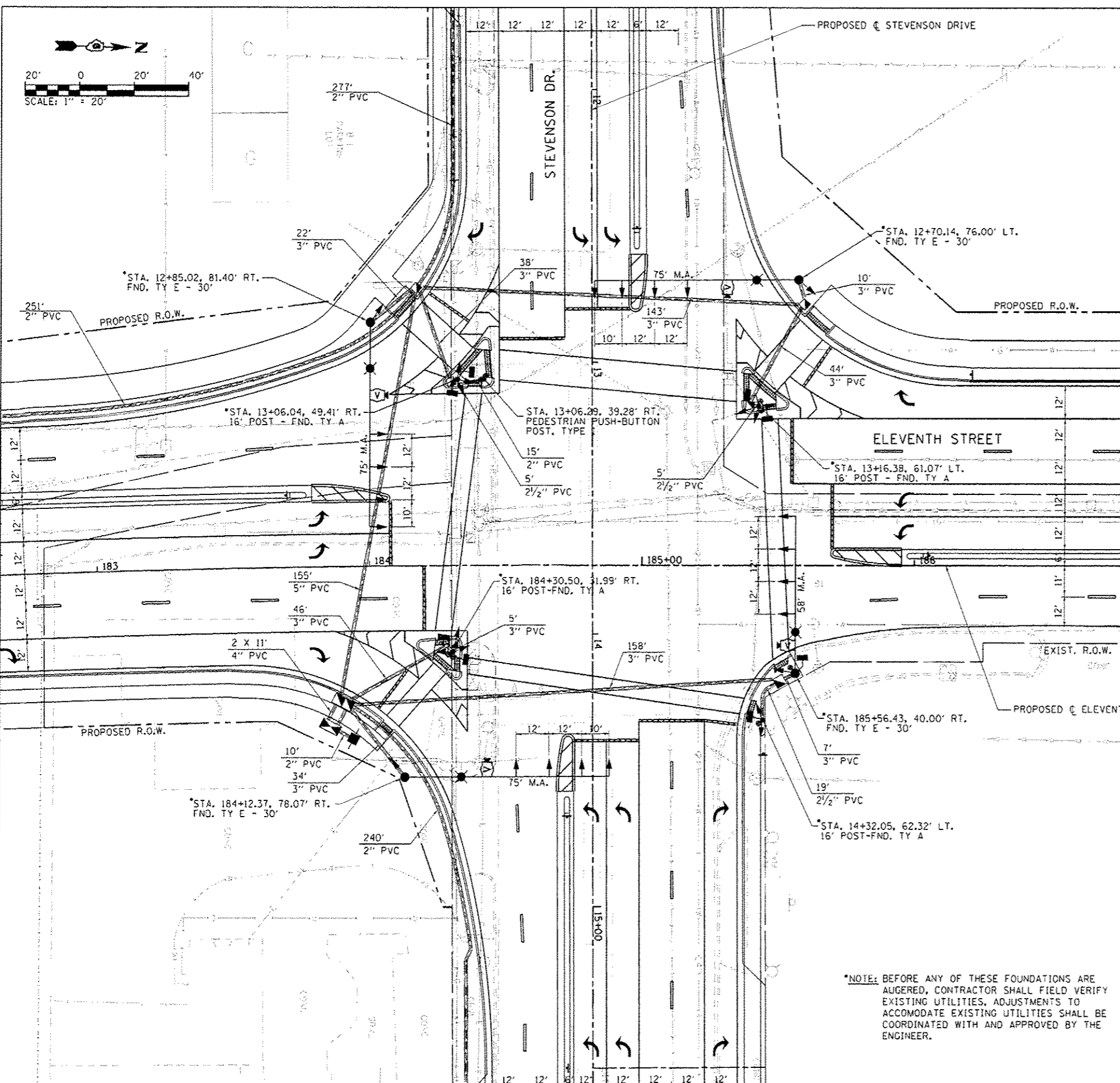
**SUMMARY OF QUANTITIES**

SP	CODE NO.	ITEM DESCRIPTION	UNIT	TOTAL QUANTITY	CONSTRUCTION CODE		
					0001	0021	0031
△	*	D2002972 EVERGREEN, PINUS STROBUS (EASTERN WHITE PINE), 6' HEIGHT, BALLED AND BURLAPPED	EACH	5	0	0	5
△	*	D2003972 EVERGREEN, TSUGA CANADENSIS (CANADIAN HEMLOCK), 6' HEIGHT, BALLED AND BURLAPPED	EACH	3	0	0	3
		X0327980 PAVEMENT MARKING REMOVAL - WATER BLASTING	SQ FT	1,453	1,453	0	0
	*	X5537800 STORM SEWERS TO BE CLEANED 12"	FOOT	59	59	0	0
	*	X6022230 MANHOLES, TYPE A, 4'-DIAMETER, WITH SPECIAL FRAME AND GRATE	EACH	5	5	0	0
	*	X6022930 MANHOLES, TYPE A, 5'-DIAMETER, WITH SPECIAL FRAME AND GRATE	EACH	2	2	0	0
	*	X6024502 INLETS, TYPE B, WITH SPECIAL FRAME AND GRATE	EACH	1	1	0	0
	*	X6061702 CONCRETE MEDIAN, TYPE SM (DOWELLED)	SQ FT	1,875	1,875	0	0
	*	X6061902 CONCRETE MEDIAN, TYPE SM (SPECIAL)	SQ FT	2,861	2,861	0	0
△	*	X8250091 COMBINATION LIGHTING CONTROLLER	EACH	1	0	1	0
	*	X7010216 TRAFFIC CONTROL AND PROTECTION, (SPECIAL)	LSUM	1	1	0	0
△	*	X8410102 TEMPORARY LIGHTING SYSTEM	LSUM	1	0	1	0
	*	XZ177600 REMOVE EXISTING BUMPER BLOCKS	EACH	10	10	0	0
△	*	Z0010688 CAMERA MOUNTING ASSEMBLY	EACH	4	0	4	0
	*	Z0013798 CONSTRUCTION LAYOUT	LSUM	1	1	0	0
△	*	Z0022800 FENCE REMOVAL	FOOT	1,461	1,461	0	0

\* SP = SEE SPECIAL PROVISIONS

△ SPECIALTY ITEMS





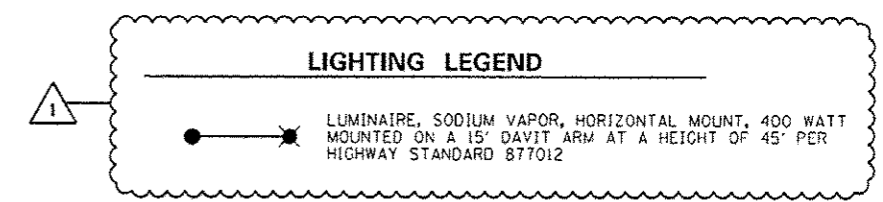
**BILL OF MATERIALS**  
11TH STREET AND STEVENSON DRIVE

ITEM	UNIT	QUANTITY
SERVICE INSTALLATION, TYPE A	EACH	1
UNDERGROUND CONDUIT, PVC, 2" DIA.	FOOT	3,906
UNDERGROUND CONDUIT, PVC, 2 1/2" DIA.	FOOT	29
UNDERGROUND CONDUIT, PVC, 3" DIA.	FOOT	507
UNDERGROUND CONDUIT, PVC, 4" DIA.	FOOT	22
UNDERGROUND CONDUIT, PVC, 5" DIA.	FOOT	155
HANDHOLE	EACH	20
DOUBLE HANDHOLE	EACH	1
ELECTRIC CABLE IN CONDUIT, 600V (XLP-TYPE USE) 3-1/C NO. 10	FOOT	1,072
LUMINAIRE, SODIUM VAPOR, HORIZONTAL MOUNT, 400 WATT	EACH	4
FULL-ACTUATED CONTROLLER AND TYPE IV CABINET	EACH	1
UNINTERRUPTABLE POWER SUPPLY, STANDARD	EACH	1
TRANSCEIVER - FIBER OPTIC	EACH	1
FIBER OPTIC CABLE IN CONDUIT, NO. 62.5/125, MM12F SM12F	FOOT	15,515
ELECTRIC CABLE IN CONDUIT, SIGNAL NO. 14 2C	FOOT	428
ELECTRIC CABLE IN CONDUIT, SIGNAL NO. 14 3C	FOOT	755
ELECTRIC CABLE IN CONDUIT, SIGNAL NO. 14 5C	FOOT	5,276
ELECTRIC CABLE IN CONDUIT, SIGNAL NO. 14 7C	FOOT	896
ELECTRIC CABLE IN CONDUIT, SIGNAL NO. 14 9C	FOOT	993
ELECTRIC CABLE IN CONDUIT, SIGNAL NO. 14 12C	FOOT	981
ELECTRIC CABLE IN CONDUIT, COMMUNICATION, NO. 18 3 PAIR	FOOT	1,072
ELECTRIC CABLE IN CONDUIT, SERVICE, NO. 6 2C	FOOT	27
ELECTRIC CABLE IN CONDUIT, EQUIPMENT GROUNDING CONDUCTOR, NO. 6 1C	FOOT	780
TRAFFIC SIGNAL POST, ALUMINUM 16 FT.	EACH	4
PEDESTRIAN PUSH-BUTTON POST, TYPE 1	EACH	1
STEEL COMBINATION MAST ARM ASSEMBLY AND POLE 58 FT.	EACH	1
STEEL COMBINATION MAST ARM ASSEMBLY AND POLE 75 FT.	EACH	3
CONCRETE FOUNDATION, TYPE A	FOOT	12
CONCRETE FOUNDATION, TYPE D	FOOT	3.5
CONCRETE FOUNDATION, TYPE E 42-INCH DIAMETER	FOOT	120
DRILL EXISTING HANDHOLE	EACH	2
SIGNAL HEAD, POLYCARBONATE, LED, 1-FACE, 3-SECTION, MAST ARM MOUNTED	EACH	16
SIGNAL HEAD, POLYCARBONATE, LED, 1-FACE, 5-SECTION, BRACKET MOUNTED	EACH	4
SIGNAL HEAD, POLYCARBONATE, LED, 2-FACE, 1-3-SECTION, 1-5-SECTION, BRACKET MOUNTED	EACH	1
SIGNAL HEAD, POLYCARBONATE, LED, 3-FACE, 1-3-SECTION, 2-5-SECTION, BRACKET MOUNTED	EACH	3
PEDESTRIAN SIGNAL HEAD, POLYCARBONATE, LED, 1-FACE, BRACKET MOUNTED WITH COUNTDOWN TIMER	EACH	2
PEDESTRIAN SIGNAL HEAD, POLYCARBONATE, LED, 2-FACE, BRACKET MOUNTED WITH COUNTDOWN TIMER	EACH	3
TRAFFIC SIGNAL BACKPLATE	EACH	16
PEDESTRIAN PUSH-BUTTON	EACH	8
TEMPORARY TRAFFIC SIGNAL INSTALLATION	EACH	1
REMOVE EXISTING TRAFFIC SIGNAL EQUIPMENT	EACH	1
REMOVE EXISTING HANDHOLE	EACH	16
REMOVE EXISTING DOUBLE HANDHOLE	EACH	1
REMOVE EXISTING CONCRETE FOUNDATION	EACH	7
CAMERA MOUNTING ASSEMBLY	EACH	4
VIDEO VEHICLE DETECTION SYSTEM	EACH	1
COMBINATION LIGHTING CONTROLLER	EACH	1
TEMPORARY LIGHTING SYSTEM	L SUM	

**GENERAL NOTES**

- SEE PAVEMENT MARKING PLAN SHEETS FOR PROPOSED CONDUIT OUTSIDE SHEET LIMITS & PROPOSED SIGNAL INTERCONNECTS.
- SEE REMOVAL SHEETS FOR EXISTING HANDHOLE AND CONCRETE FOUNDATION REMOVAL. ALL ITEMS INCLUDED UNDER REMOVE EXISTING TRAFFIC SIGNAL EQUIPMENT ARE LISTED ON THE TEMPORARY TRAFFIC SIGNAL LAYOUT SHEET.
- REMOVED TRAFFIC SIGNAL EQUIPMENT SHALL BE RETURNED TO THE CITY OF SPRINGFIELD.

**LIGHTING LEGEND**



\*NOTE: BEFORE ANY OF THESE FOUNDATIONS ARE AUGERED, CONTRACTOR SHALL FIELD VERIFY EXISTING UTILITIES. ADJUSTMENTS TO ACCOMMODATE EXISTING UTILITIES SHALL BE COORDINATED WITH AND APPROVED BY THE ENGINEER.

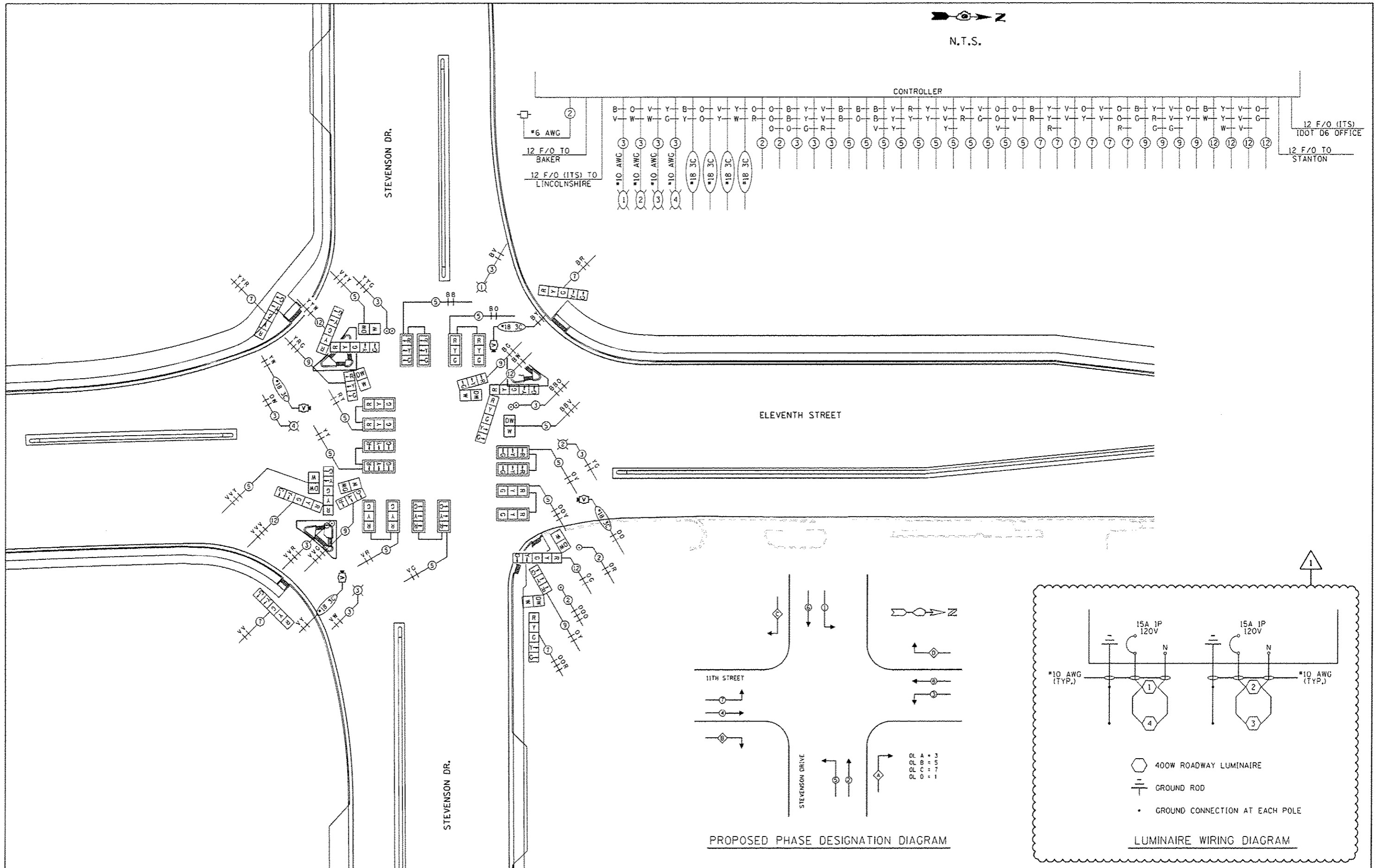
FILE NAME =	USER NAME = Brian Bond	DESIGNED - BMB/RMM	REVISED - BMB 2/8/17
LOCAL PATH = L:\Springfield\0002501\Drawings\TRAFF	SIGNAL PROP. ADDENDUM = Addn	DRAWN - GLD	REVISED -
Default	PLOT SCALE = 48,0000 / 1 in.	CHECKED - SPH	REVISED -
	PLOT DATE = 2/8/2017	DATE - 12/23/16	REVISED -

**CITY OF SPRINGFIELD  
SPRINGFIELD, ILLINOIS**

**PROPOSED TRAFFIC SIGNAL LAYOUT  
11TH STREET & STEVENSON DRIVE**

SCALE: 1"=20' SHEET OF SHEETS STA. 183+00 TO STA. 187+00

F.A.U. RTE.	SECTION	COUNTY	TOTAL SHEETS	SHEET NO.
8031	95-00361-04-PV	SANGAMON	151	115
				CONTRACT NO. 93688
ILLINOIS FED. AID PROJECT				



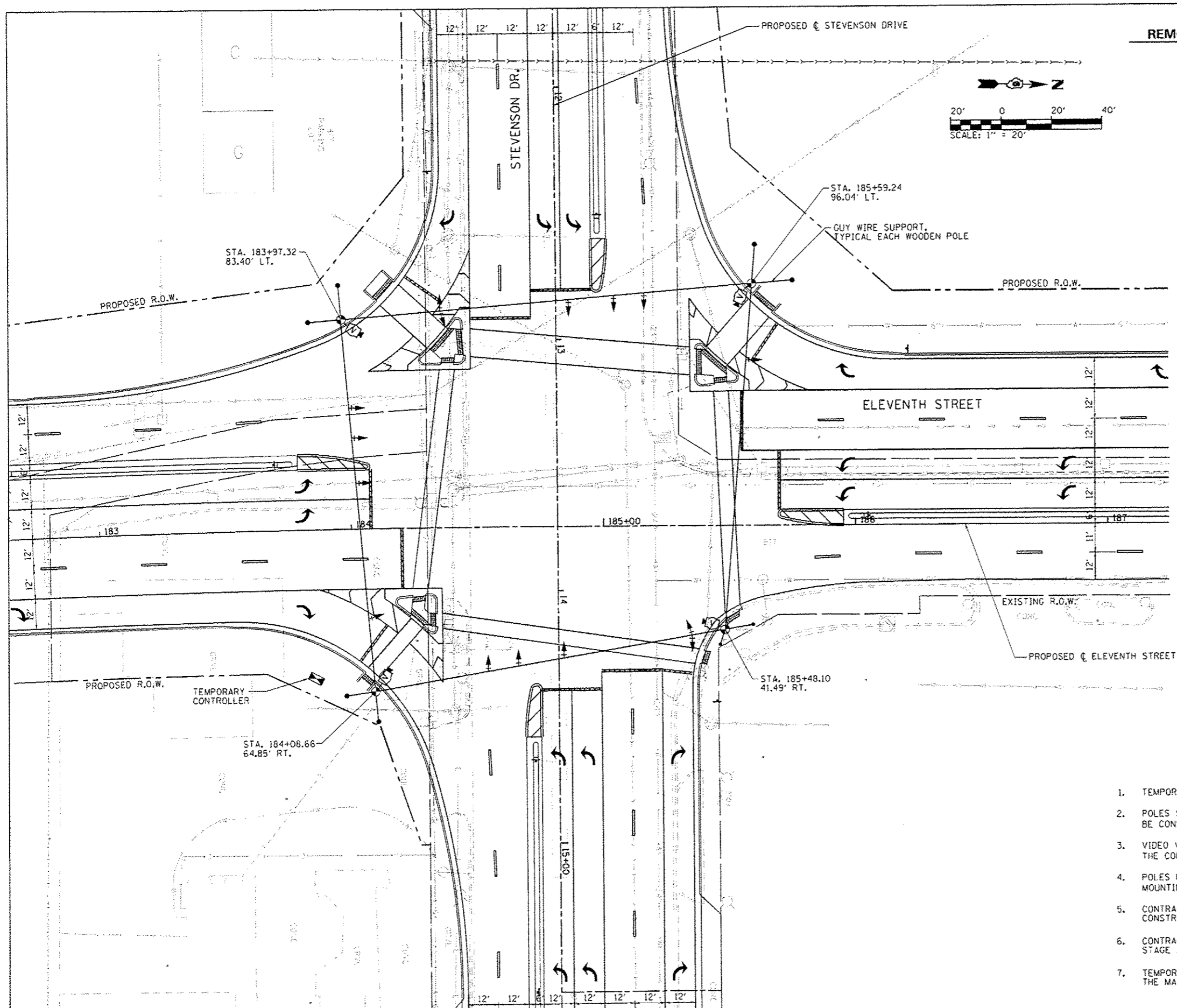
FILE NAME =	USER NAME = BMB/BMM	DESIGNED - BMB/RMM	REVISED - BMB 2/8/17
L:\Springfield\002250\Drawings\TRAFFIC	SIGNAL_Cable_Layout\RDDENOM A.dgn	DRAWN - GLD	REVISED -
Default	PLOT SCALE = 50.0000' / in.	CHECKED - SPH	REVISED -
	PLOT DATE = 2/8/2017	DATE - 12/23/16	REVISED -

**CITY OF SPRINGFIELD  
SPRINGFIELD, ILLINOIS**

**PROPOSED CABLE LAYOUT  
11TH STREET & STEVENSON DRIVE**

SCALE: N.T.S. SHEET OF SHEETS STA. TO STA.

F.A.U. RTE.	SECTION	COUNTY	TOTAL SHEETS	SHEET NO.
8031	95-00361-04-PV	SANGAMON	151	116
CONTRACT NO. 93688				
ILLINOIS FED. AID PROJECT				



**REMOVE EXISTING TRAFFIC SIGNAL EQUIPMENT INCLUDES:**

MAST ARM ASSEMBLY & POLE	2	EACH
TRAFFIC SIGNAL POST	4	EACH
SIGNAL HEADS	15	EACH
CONTROLLER CABINET	1	EACH
•ELECTRIC CABLE IN CONDUIT		
•CONDUIT		
•FIBER OPTIC CABLE (INTERCONNECT)		

•NOTE: ALL EXISTING CABLE IN CONDUIT IS TO BE REMOVED ALONG 11TH STREET AND ALONG STEVENSON DRIVE BETWEEN EXISTING JUNCTION BOXES AT STA. 7+25.62 AND STA. 18+65.53. EXISTING SIGNAL INTERCONNECT CABLE TO BAKER STREET, STANTON AVENUE AND THE IDOT DISTRICT 6 OFFICE SHALL BE REMOVED AND REPLACED WITH PROPOSED CABLE. EXISTING CONDUIT IS TO BE ABANDONED IN THE AREAS WHERE NEW CONDUIT IS PROPOSED EXCEPT IN THE CASE WHERE PROPOSED IMPROVEMENTS AFFECT THE EXISTING CONDUIT, IN WHICH CASE THE CONDUIT WILL THEN BE REMOVED. ALL REMOVAL OF EXISTING ELECTRIC CABLE, FIBER OPTIC CABLE AND CONDUIT WILL BE INCLUDED IN THE PRICE OF REMOVE EXISTING TRAFFIC SIGNAL EQUIPMENT. EXISTING STREET SIGN PANELS MOUNTED ON EXISTING TRAFFIC SIGNAL POSTS WILL BE REMOVED AND PAID FOR AS REMOVE SIGN PANEL, TYPE 1. 50. FT.

**TEMPORARY LIGHTING NOTES**

- TEMPORARY LIGHTING SHALL BE PROVIDED AS DESCRIBED IN THE SPECIAL PROVISION "TEMPORARY LIGHTING SYSTEM".

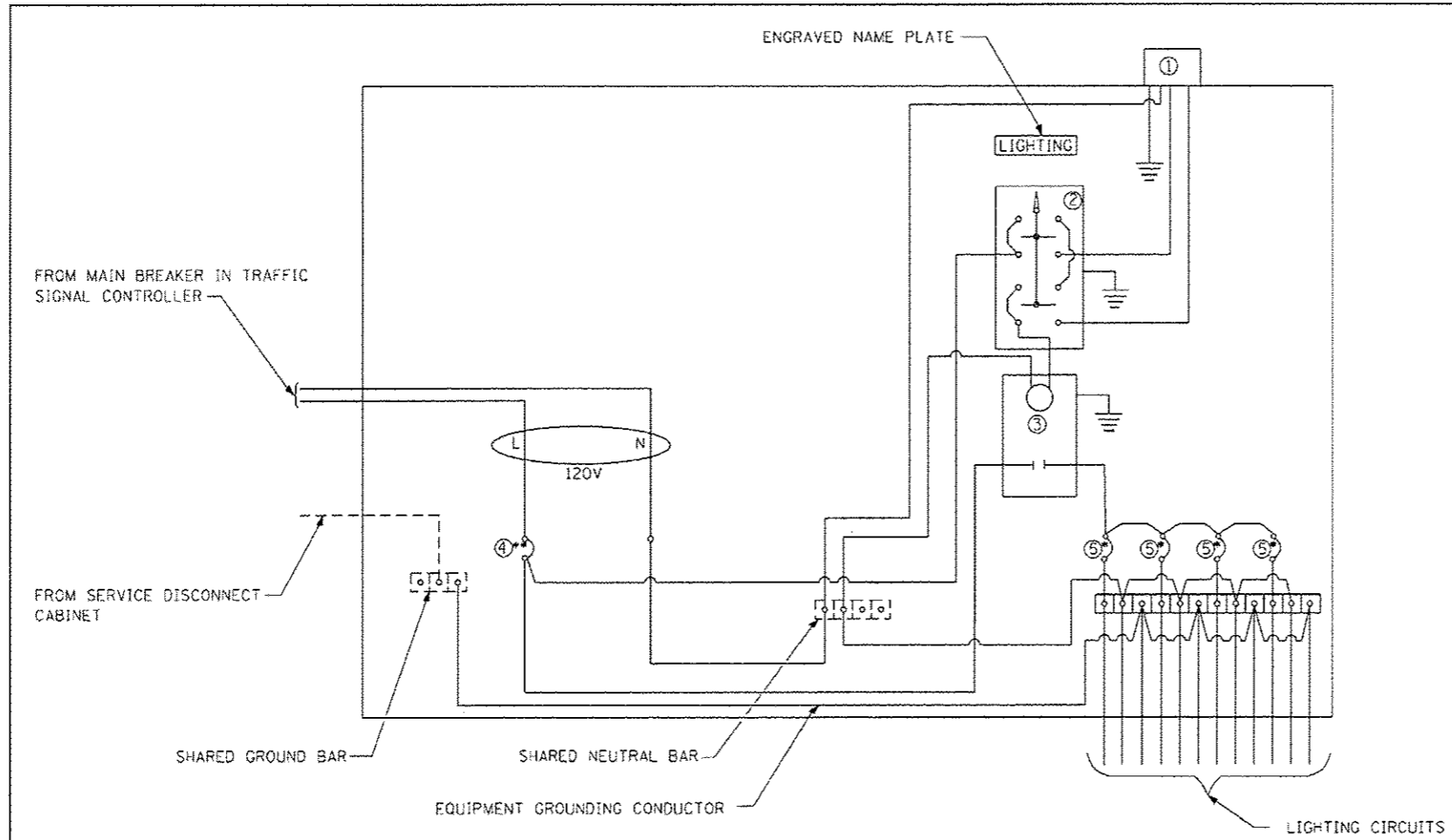
**TEMPORARY TRAFFIC SIGNAL LEGEND**

- TEMPORARY TRAFFIC SIGNAL HEAD SPAN WIRE MOUNTED W/BACKPLATE
- TEMPORARY WOOD POLE (CLASS 3 OR BETTER)
- TEMPORARY SPAN WIRE, TETHER WIRE OR CABLE
- TEMPORARY VIDEO DETECTION CAMERA

**TEMPORARY SIGNAL NOTES**

- TEMPORARY SIGNALS SHALL BE OPERATIONAL PRIOR TO THE REMOVAL OF EXISTING SIGNALS.
- POLES SHALL BE USED TO THE SATISFACTION OF THE ENGINEER. ANY ADJUSTMENTS SHALL BE CONSIDERED PART OF THE PAY ITEM FOR TEMPORARY TRAFFIC SIGNAL INSTALLATION.
- VIDEO VEHICLE DETECTION SYSTEM SHALL BE UTILIZED TO PROVIDE DETECTION FOR THE CONTROLLER.
- POLES USED FOR TEMPORARY SIGNAL INSTALLATION SHALL PROVIDE A MINIMUM 35' MOUNTING HEIGHT FOR THE VIDEO CAMERAS.
- CONTRACTOR SHALL PROVIDE TEMPORARY CABLE DIAGRAM LAYOUT FOR EACH SEPARATE CONSTRUCTION STAGE.
- CONTRACTOR SHALL ADJUST PLACEMENT OF SIGNAL HEADS FOR EACH CONSTRUCTION STAGE AS DIRECTED BY THE ENGINEER.
- TEMPORARY SIGNAL HEAD SPACING AND SIGNAL TIMING SHALL BE COORDINATED WITH THE MAINTENANCE OF TRAFFIC.

FILE NAME =	USER NAME = Brian Bond	DESIGNED - BMB/RMM	REVISED -  BMB 2/8/17	<b>CITY OF SPRINGFIELD SPRINGFIELD, ILLINOIS</b>	<b>EXISTING &amp; TEMPORARY TRAFFIC SIGNAL LAYOUT 11TH STREET &amp; STEVENSON DRIVE</b>	F.A.U. RTE.	SECTION	COUNTY	TOTAL SHEETS	SHEET NO.	
Ln:\Springfield\00025201\draw\shasta\TRAF	SIGNAL_TEMPORARY_ADDENDUM.dwg	DRAWN - GLD	REVISED -			8031	95-00361-04-PV	SANGAMON	151	117	
Default	PLOT SCALE = 48,2428 1/1 in.	CHECKED - SPH	REVISED -			CONTRACT NO. 93688					
	PLOT DATE = 2/8/2017	DATE - 12/23/16	REVISED -			ILLINOIS FED. AID PROJECT					



**LEGEND**

- Ground connected to shared ground bar.
- Indicates shared with traffic signal controller equipment.
- ① Photocell with integral surge arrester.
- ② HAND-OFF-AUTO selector switch.
- ③ 30 amp, 1 pole electrically held contactor.
- ④ 20 amp, 1 pole, circuit breaker
- ⑤ 15 amp, 1 pole, branch breaker
- Quantity of branch breakers shall depend on the combination lighting circuit diagram or as directed by the engineer.
- \*\* Size larger as needed.

**COMBINATION LIGHTING CONTROLLER WIRING DIAGRAM**

**GENERAL NOTES**

- All control installation components shall be U.L. listed.
- All wiring shall be neatly dressed, identified by tags, and supported.
- The circuit breaker shall be clearly labeled for lighting according to Article 1068.01(f) of the Standard Specifications.
- Install under eave photocell on traffic signal controller cabinet per Article 1068.01(e)(2) of the Standard Specifications.
- All lighting equipment shall be installed on a side mounted insulated subpanel per Article 1068.01(e)(9) of the Standard Specifications on the lower right hand side of the traffic signal controller or as directed by the engineer.
- Provide an engraved stainless steel nameplate on the sub panel reading "LIGHTING".

DATE	REVISIONS
10/13/14	NEW DETAIL
01/07/17	CHANGE MAIN CB TO 20A

**COMBINATION LIGHTING CONTROLLER DETAIL**