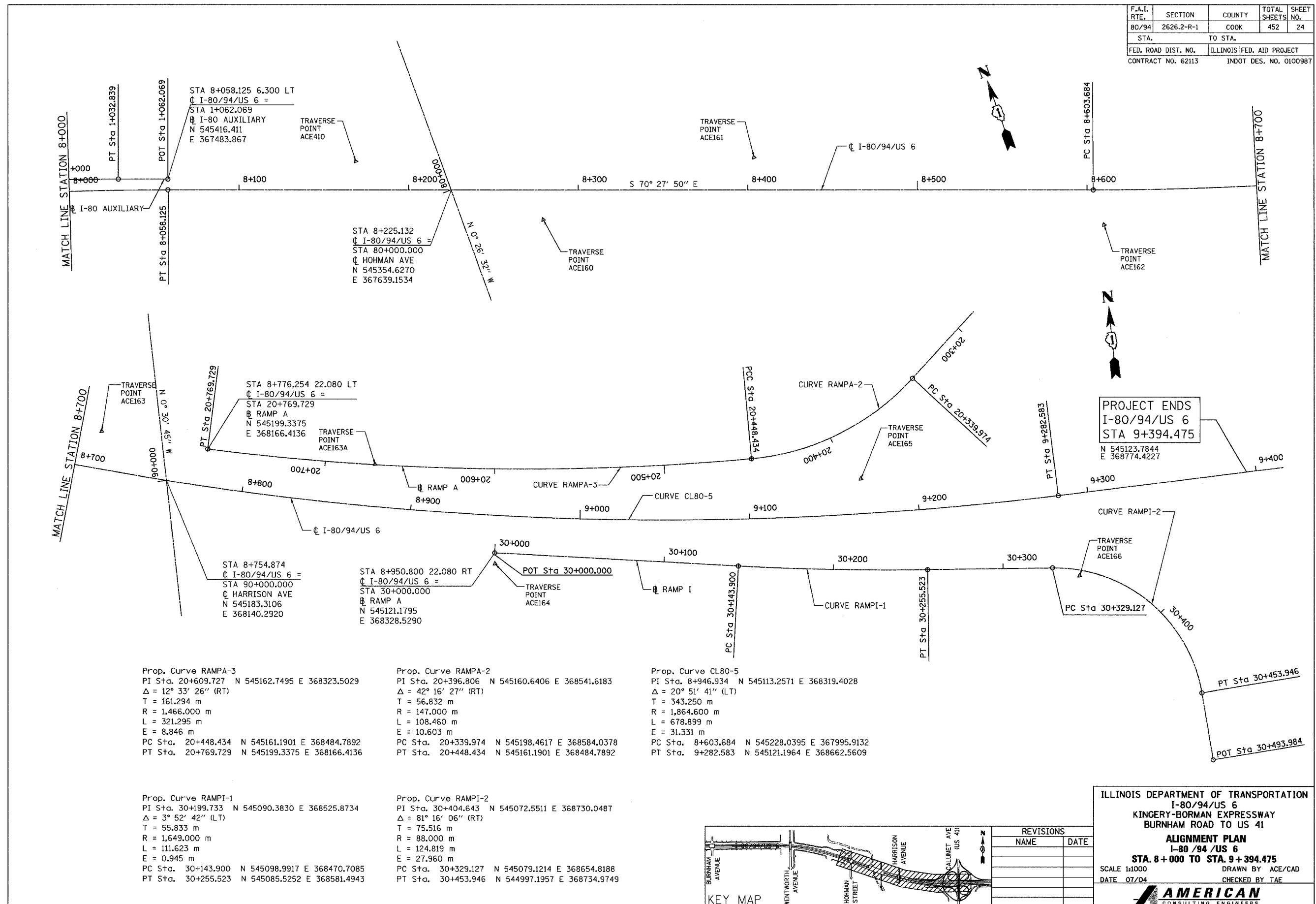


F.A.I. RTE.	SECTION	COUNTY	TOTAL SHEETS	SHEET NO.
80/94	2626.2-R-1	COOK	452	24
STA.	TO STA.			
FED. ROAD DIST. NO.	ILLINOIS FED. AID PROJECT			
CONTRACT NO. 62113	INDOT DES. NO. 0100987			



PROJECT ENDS
I-80/94/US 6
STA 9+394.475
N 545123.7844
E 368774.4227

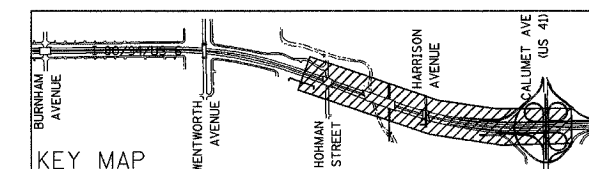
Prop. Curve RAMP A-3
PI Sta. 20+609.727 N 545162.7495 E 368323.5029
 $\Delta = 12^\circ 33' 26''$ (RT)
T = 161.294 m
R = 1,466.000 m
L = 321.295 m
E = 8,846 m
PC Sta. 20+448.434 N 545161.1901 E 368484.7892
PT Sta. 20+769.729 N 545199.3375 E 368166.4136

Prop. Curve RAMP A-2
PI Sta. 20+396.806 N 545160.6406 E 368541.6183
 $\Delta = 42^\circ 16' 27''$ (RT)
T = 56.832 m
R = 147.000 m
L = 108.460 m
E = 10.603 m
PC Sta. 20+339.974 N 545198.4617 E 368584.0378
PT Sta. 20+448.434 N 545161.1901 E 368484.7892

Prop. Curve CL80-5
PI Sta. 8+946.934 N 545113.2571 E 368319.4028
 $\Delta = 20^\circ 51' 41''$ (LT)
T = 343.250 m
R = 1,864.600 m
L = 678.899 m
E = 31.331 m
PC Sta. 8+603.684 N 545228.0395 E 367995.9132
PT Sta. 9+282.583 N 545121.1964 E 368662.5609

Prop. Curve RAMP I-1
PI Sta. 30+199.733 N 545090.3830 E 368525.8734
 $\Delta = 3^\circ 52' 42''$ (LT)
T = 55.833 m
R = 1,649.000 m
L = 111.623 m
E = 0.945 m
PC Sta. 30+143.900 N 545098.9917 E 368470.7085
PT Sta. 30+255.523 N 545085.5252 E 368581.4943

Prop. Curve RAMP I-2
PI Sta. 30+404.643 N 545072.5511 E 368730.0487
 $\Delta = 81^\circ 16' 06''$ (RT)
T = 75.516 m
R = 88.000 m
L = 124.819 m
E = 27.960 m
PC Sta. 30+329.127 N 545079.1214 E 368654.8188
PT Sta. 30+453.946 N 544997.1957 E 368734.9749



REVISIONS	
NAME	DATE

ILLINOIS DEPARTMENT OF TRANSPORTATION
I-80/94/US 6
KINGERY-BORMAN EXPRESSWAY
BURNHAM ROAD TO US 41
ALIGNMENT PLAN
I-80 /94 /US 6
STA. 8+000 TO STA. 9+394.475
SCALE 1:1000 DRAWN BY ACE/CAD
DATE 07/04 CHECKED BY TAE
AMERICAN
CONSULTING ENGINEERS