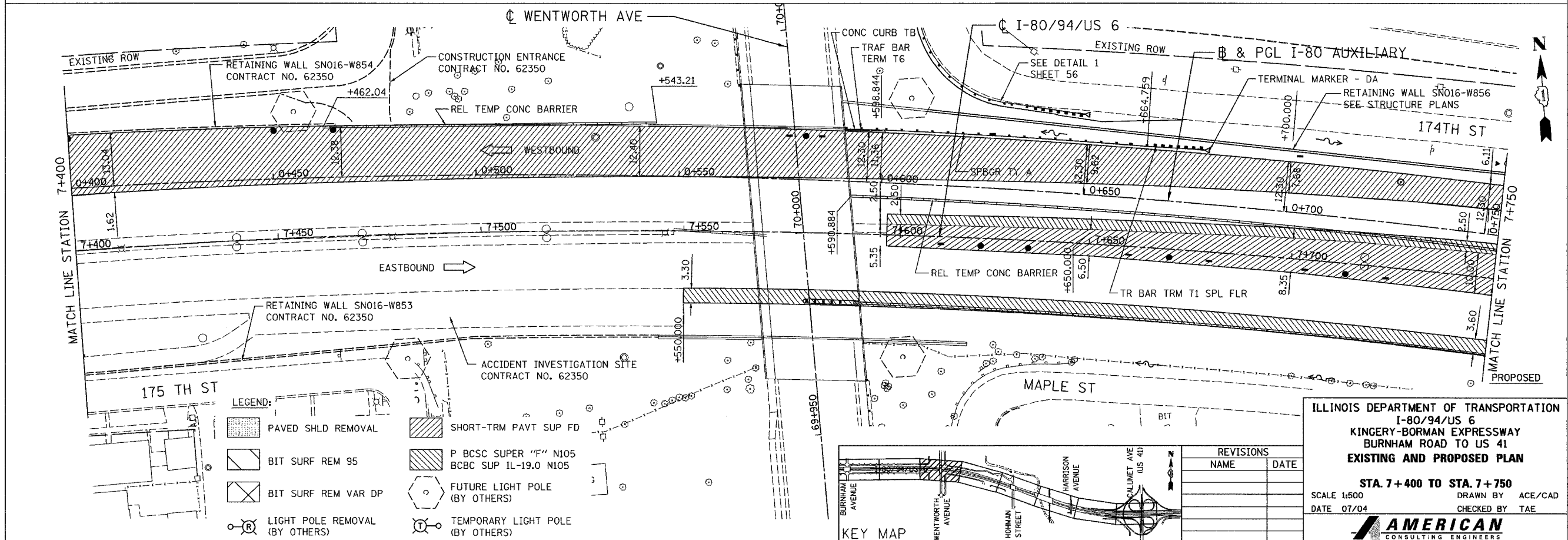
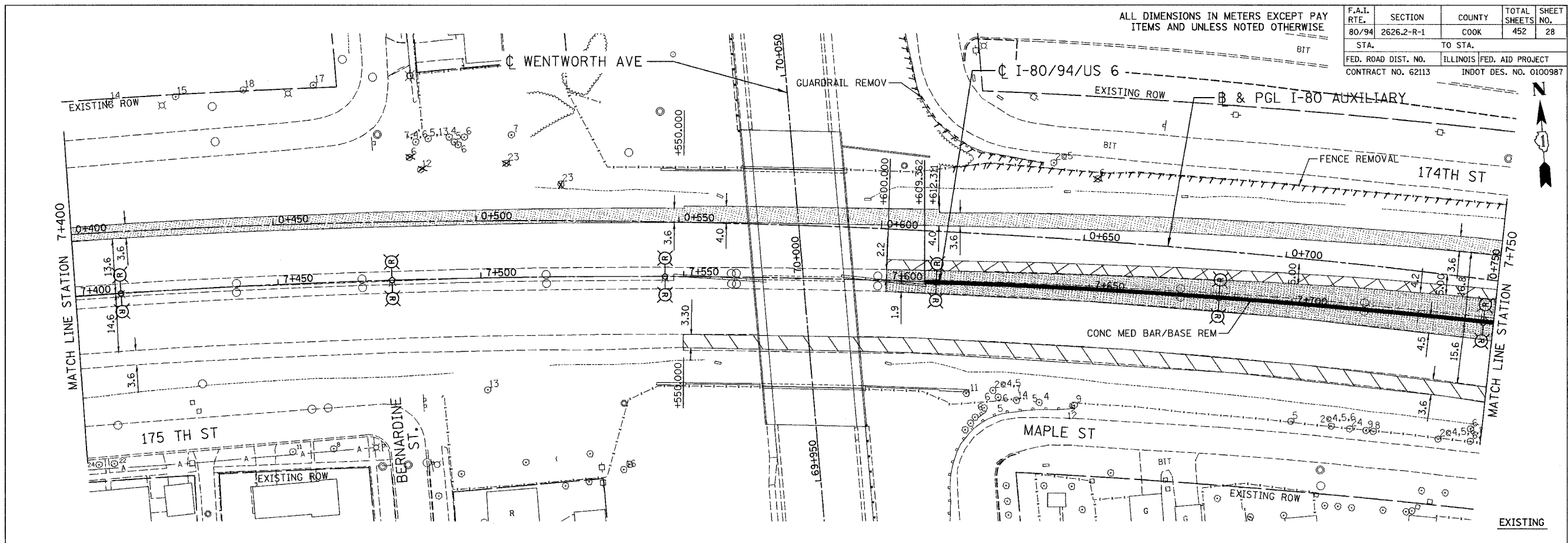


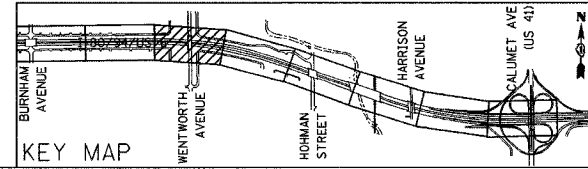
ALL DIMENSIONS IN METERS EXCEPT PAY ITEMS AND UNLESS NOTED OTHERWISE

F.A.I. RTE.	SECTION	COUNTY	TOTAL SHEETS	SHEET NO.
80/94	2626.2-R-1	COOK	452	28
STA.	TO STA.			
FED. ROAD DIST. NO.	ILLINOIS	FED. AID PROJECT		
CONTRACT NO. 62113	INDOT DES. NO. 0100987			



LEGEND:

	PAVED SHLD REMOVAL		SHORT-TRM PAVT SUP FD
	BIT SURF REM 95		P BCSC SUPER "F" N105
	BIT SURF REM VAR DP		BCBC SUP IL-19.0 N105
	LIGHT POLE REMOVAL (BY OTHERS)		FUTURE LIGHT POLE (BY OTHERS)
	LIGHT POLE REMOVAL (BY OTHERS)		TEMPORARY LIGHT POLE (BY OTHERS)



REVISIONS	
NAME	DATE

ILLINOIS DEPARTMENT OF TRANSPORTATION  
 I-80/94/US 6  
 KINGERY-BORMAN EXPRESSWAY  
 BURNHAM ROAD TO US 41  
**EXISTING AND PROPOSED PLAN**

STA. 7+400 TO STA. 7+750  
 SCALE 1:500  
 DATE 07/04

DRAWN BY ACE/CAD  
 CHECKED BY TAE