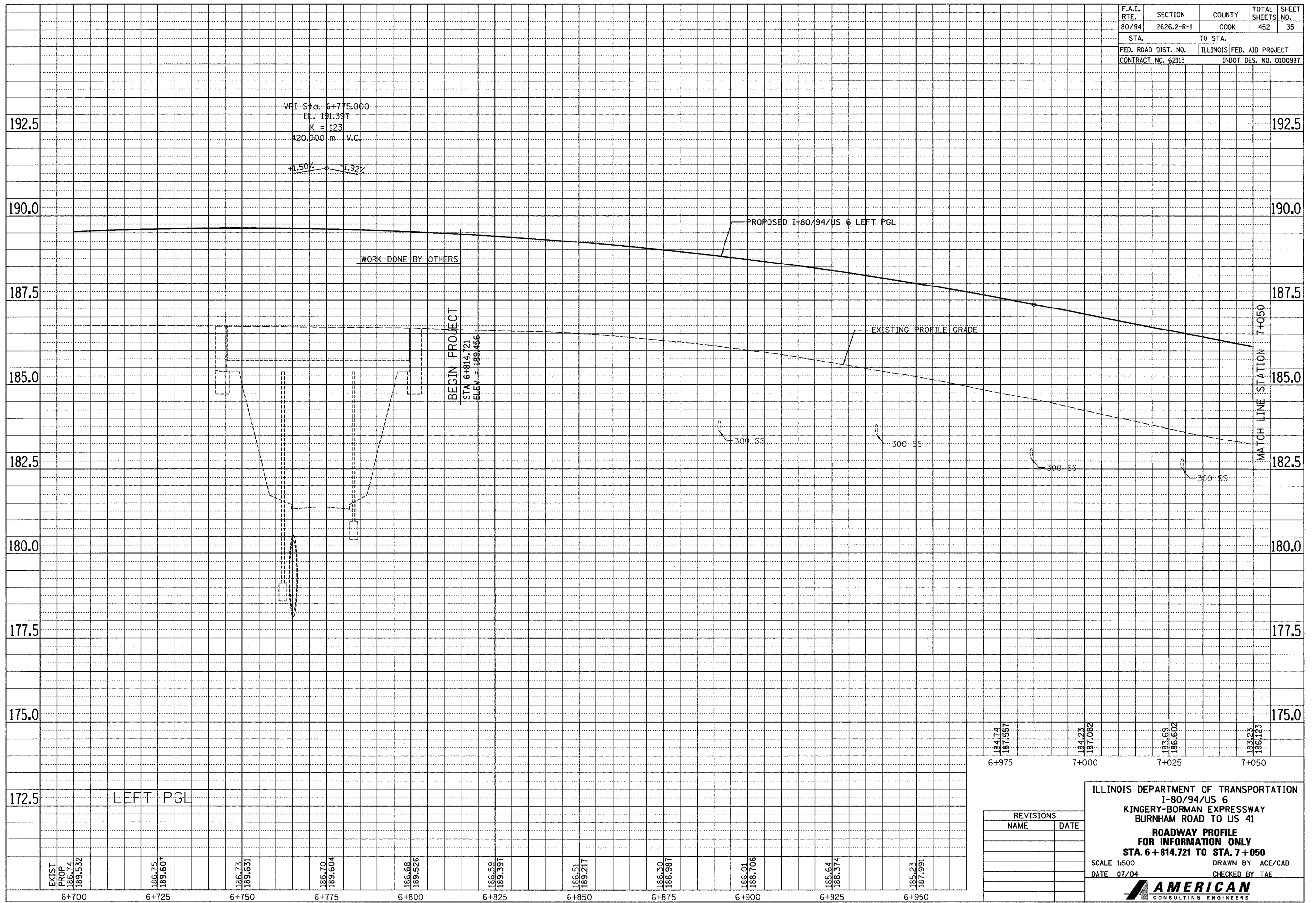


F.A.I. RTE. 80/94	SECTION 2626.2-R-1	COUNTY COOK	TOTAL SHEETS 452	SHEET NO. 35
STA. TO STA.		TO STA.		
FED. ROAD DIST. NO.		ILLINOIS	FED. AID PROJECT	
CONTRACT NO. 62113		INDOT DES. NO. 0100987		

FINAL SURVEYED SURVEY PLOTTED	BY	DATE
NOTE BOOK TEMPLATE AREAS CHECKED		
NO.		

ORIGINAL SURVEYED SURVEY PLOTTED	BY	DATE
NOTE BOOK TEMPLATE AREAS CHECKED		
NO.		



REVISIONS	
NAME	DATE

ILLINOIS DEPARTMENT OF TRANSPORTATION
 I-80/94/US 6
 KINGERY-BORMAN EXPRESSWAY
 BURNHAM ROAD TO US 41
ROADWAY PROFILE
 FOR INFORMATION ONLY
 STA. 6+814.721 TO STA. 7+050
 SCALE 1:500 DRAWN BY ACE/CAD
 DATE 07/04 CHECKED BY TAE