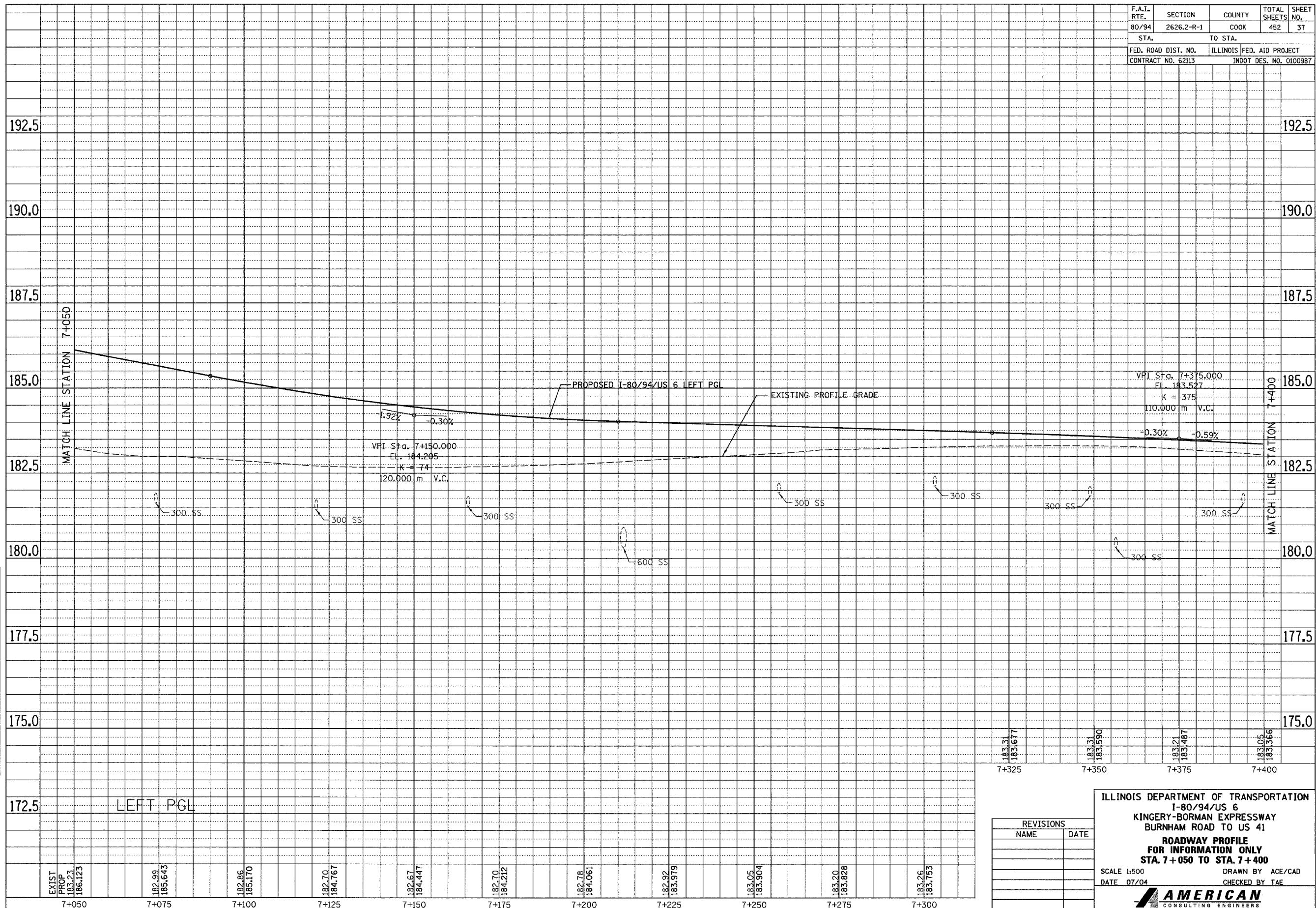


F.A.I. RTE.	SECTION	COUNTY	TOTAL SHEETS	SHEET NO.
80/94	2626.2-R-1	COOK	452	37
STA.		TO STA.		
FED. ROAD DIST. NO.		ILLINOIS FED. AID PROJECT		
CONTRACT NO. 62113		INDOT DES. NO. 0100987		

FINAL SURVEY PLOTTED	BY	DATE
NOTE BOOK TEMPLATE		
AREAS CHECKED		
NO.		

ORIGINAL SURVEY PLOTTED	BY	DATE
NOTE BOOK TEMPLATE		
AREAS CHECKED		
NO.		



183.31	7+325
183.677	
183.31	7+350
183.590	
183.21	7+375
183.487	
183.05	7+400
183.366	

REVISIONS	
NAME	DATE

ILLINOIS DEPARTMENT OF TRANSPORTATION  
 I-80/94/US 6  
 KINGERY-BORMAN EXPRESSWAY  
 BURNHAM ROAD TO US 41

**ROADWAY PROFILE FOR INFORMATION ONLY**  
 STA. 7+050 TO STA. 7+400

SCALE 1:500  
 DATE 07/04

DRAWN BY ACE/CAD  
 CHECKED BY TAE

**AMERICAN**  
 CONSULTING ENGINEERS