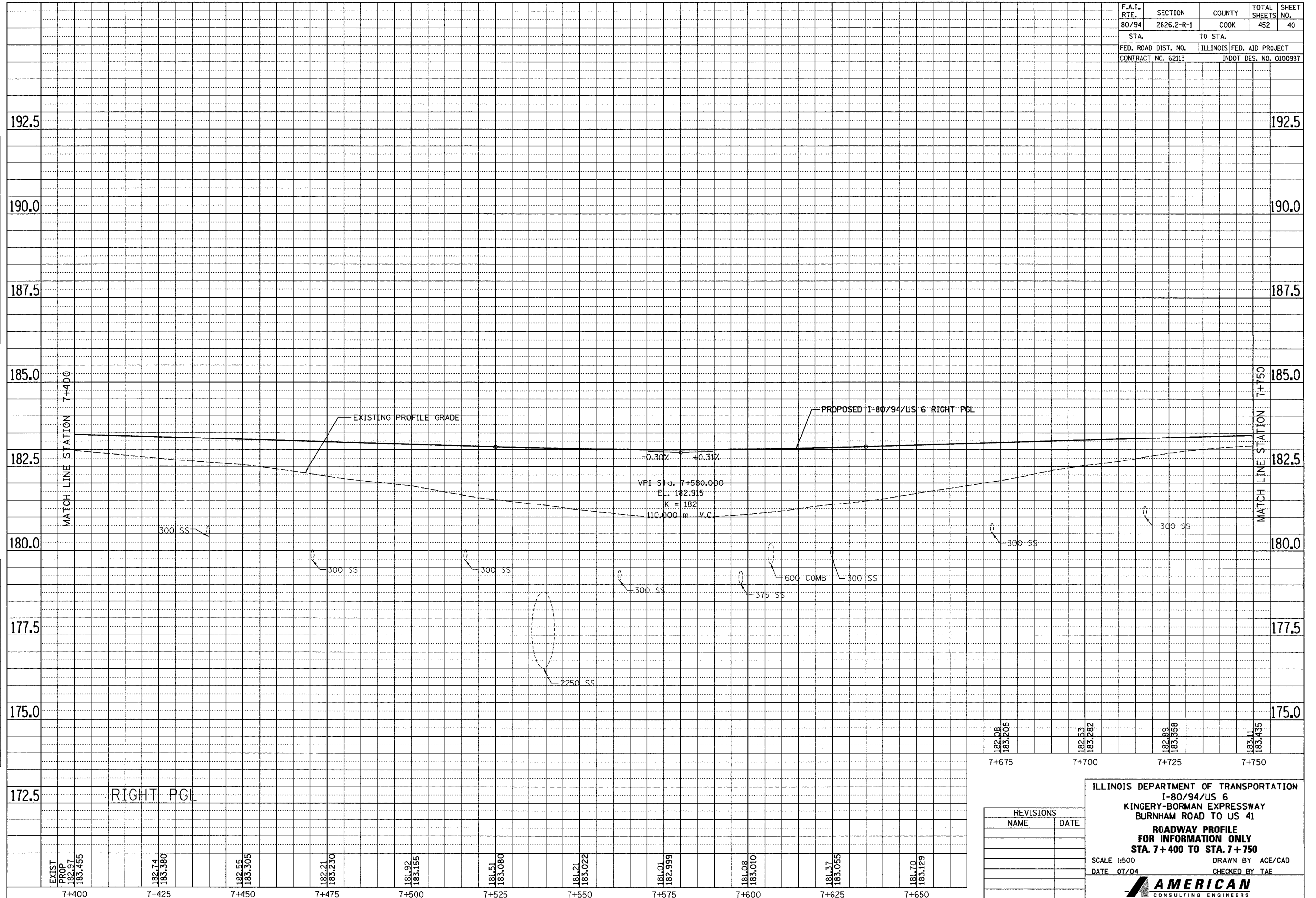


F.A.I. RTE.	SECTION	COUNTY	TOTAL SHEETS	SHEET NO.
80/94	2626.2-R-1	COOK	452	40
STA.		TO STA.		
FED. ROAD DIST. NO.		ILLINOIS	FED. AID PROJECT	
CONTRACT NO. 62113		INDOT DES. NO. 0100987		

FINAL SURVEY	BY	DATE
SURVEYED		
NOTE BOOK NO.		
AREAS CHECKED		

ORIGINAL SURVEY	BY	DATE
SURVEY PLOTTED		
NOTE BOOK NO.		
AREAS CHECKED		



182.06	7+675
183.205	
182.53	7+700
183.282	
182.88	7+725
183.058	
183.11	7+750
183.435	

REVISIONS	
NAME	DATE

ILLINOIS DEPARTMENT OF TRANSPORTATION
 I-80/94/US 6
 KINGERY-BORMAN EXPRESSWAY
 BURNHAM ROAD TO US 41
ROADWAY PROFILE
 FOR INFORMATION ONLY
 STA. 7+400 TO STA. 7+750
 SCALE 1:500
 DATE 07/04
 DRAWN BY ACE/CAD
 CHECKED BY TAE
AMERICAN
 CONSULTING ENGINEERS