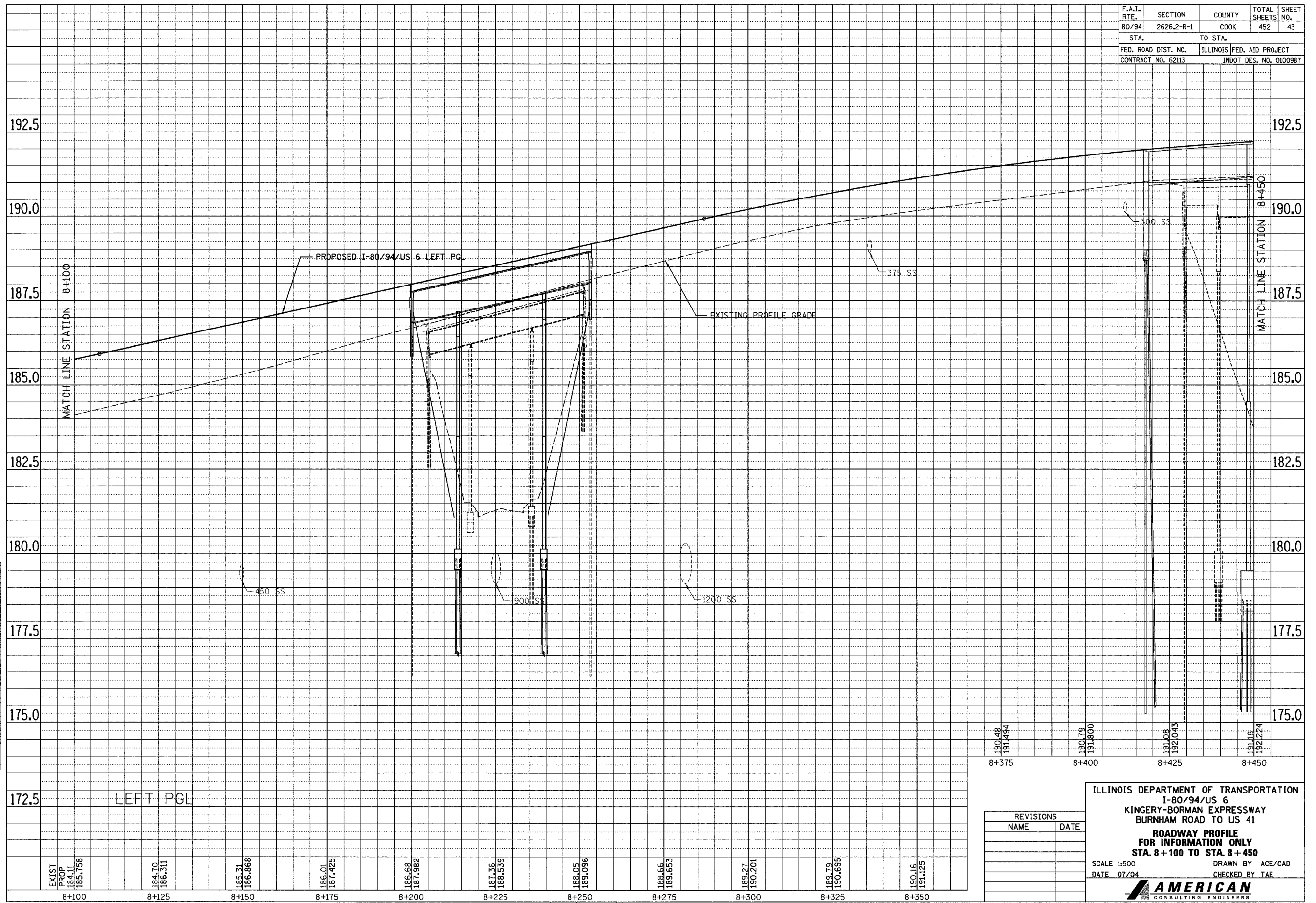


F.A.I. RTE. 80/94	SECTION 2626.2-R-1	COUNTY COOK	TOTAL SHEETS 452	SHEET NO. 43
STA. 8+100	TO STA. 8+450	FED. ROAD DIST. NO. ILLINOIS FED. AID PROJECT		
CONTRACT NO. 62113		INDOT DES. NO. 0100987		

FINAL SURVEY PLOTTED	BY	DATE
NOTE BOOK TEMPLATE NO.		
AREAS CHECKED		

ORIGINAL SURVEY PLOTTED	BY	DATE
NOTE BOOK TEMPLATE NO.		
AREAS CHECKED		



190.48	8+375
191.494	
190.79	8+400
191.800	
191.08	8+425
192.043	
191.18	8+450
192.224	

REVISIONS	
NAME	DATE

ILLINOIS DEPARTMENT OF TRANSPORTATION
 I-80/94/US 6
 KINGERY-BORMAN EXPRESSWAY
 BURNHAM ROAD TO US 41
**ROADWAY PROFILE
 FOR INFORMATION ONLY**
 STA. 8+100 TO STA. 8+450
 SCALE 1:500 DRAWN BY ACE/CAD
 DATE 07/04 CHECKED BY TAE

AMERICAN
 CONSULTING ENGINEERS