

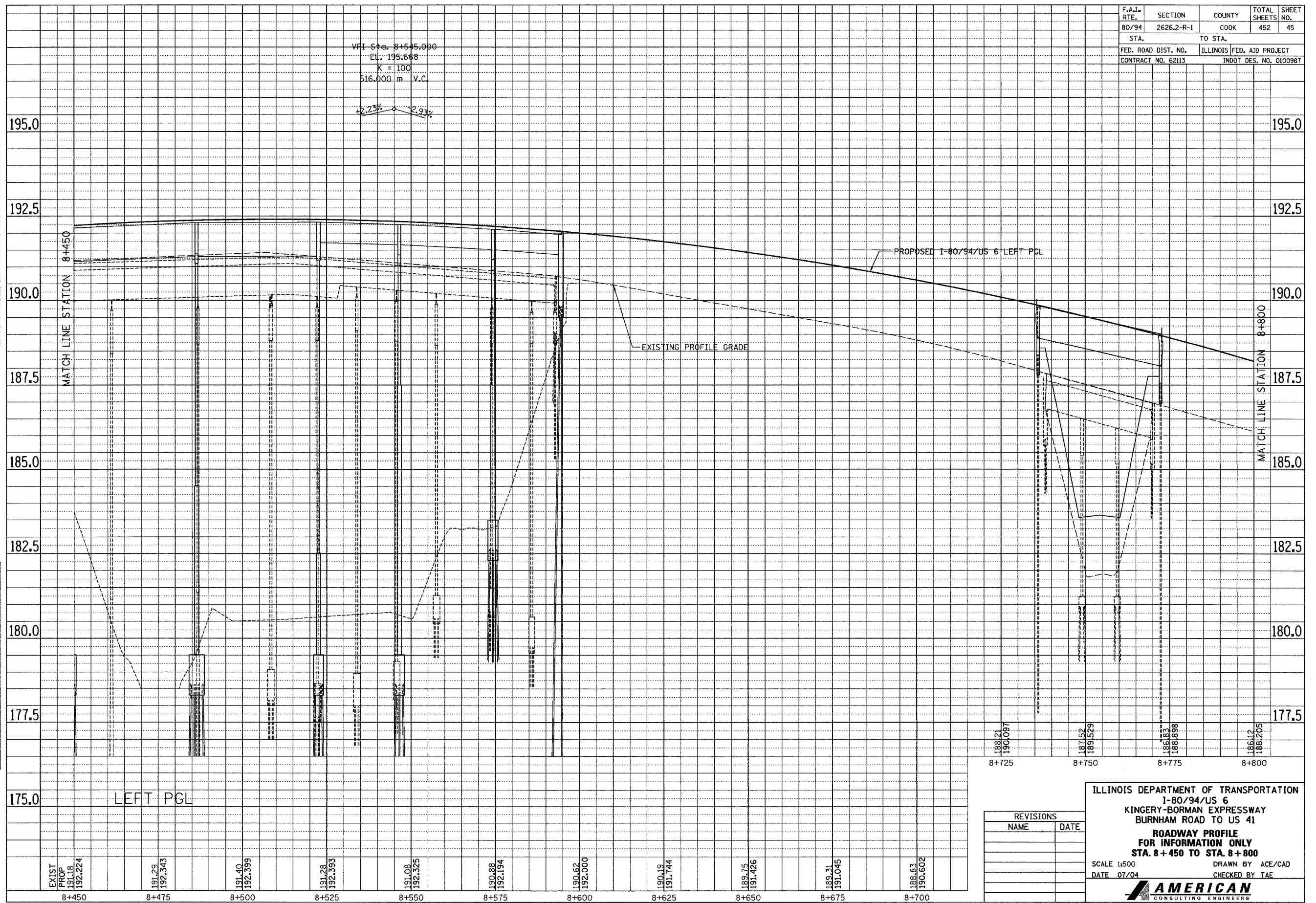
F.A.I. RTE.	SECTION	COUNTY	TOTAL SHEETS	SHEET NO.
80/94	2626.2-R-1	COOK	452	45
STA.	TO STA.			
FED. ROAD DIST. NO.	ILLINOIS	FED. AID PROJECT		
CONTRACT NO. 62113	INDOT DES. NO. 0100987			

VPI Sta. 8+545.000
 EL. 195.668
 K = 100
 516.000 m V.C.

+2.23% -2.93%

FINAL SURVEY PLOTTED	BY	DATE
NOTE BOOK TEMPLATE AREAS CHECKED		
NO.		

ORIGINAL SURVEY PLOTTED	BY	DATE
NOTE BOOK TEMPLATE AREAS CHECKED		
NO.		



REVISIONS	
NAME	DATE

ILLINOIS DEPARTMENT OF TRANSPORTATION
 1-80/94/US 6
 KINGERY-BORMAN EXPRESSWAY
 BURNHAM ROAD TO US 41
ROADWAY PROFILE
 FOR INFORMATION ONLY
 STA. 8+450 TO STA. 8+800

SCALE 1:500 DRAWN BY ACE/CAD
 DATE 07/04 CHECKED BY TAE

AMERICAN
 CONSULTING ENGINEERS