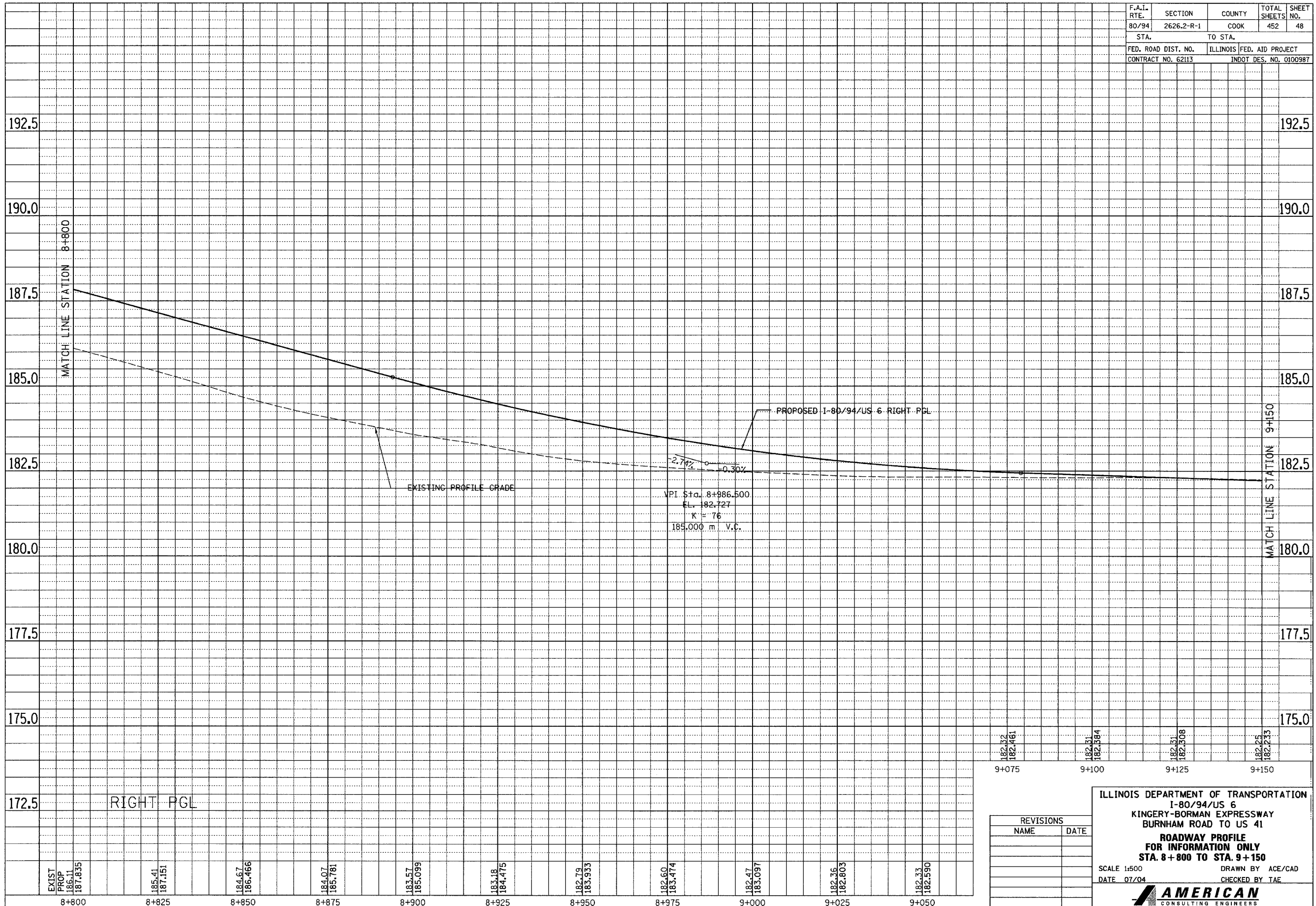


F.A.I. RTE. 80/94	SECTION 2626.2-R-1	COUNTY COOK	TOTAL SHEETS 452	SHEET NO. 48
STA. 8+800		TO STA. 9+150		
FED. ROAD DIST. NO. CONTRACT NO. 62113		ILLINOIS FED. AID PROJECT INDOT DES. NO. 0100987		

FINAL SURVEYED	BY	DATE
SURVEY PLOT		
NOTE BOOK		
TEMPLATE		
NO.		
AREAS CHECKED		

ORIGINAL SURVEYED	BY	DATE
SURVEY PLOT		
NOTE BOOK		
TEMPLATE		
NO.		
AREAS CHECKED		



172.5 RIGHT PGL

EXIST PROP	186.11	187.835																		
	185.41	187.151																		
	184.67	186.466																		
	184.07	185.781																		
	183.57	185.099																		
	183.18	184.475																		
	182.79	183.933																		
	182.60	183.474																		
	182.47	183.097																		
	182.36	182.803																		
	182.33	182.590																		

REVISIONS	
NAME	DATE

ILLINOIS DEPARTMENT OF TRANSPORTATION
I-80/94/US 6
KINGERY-BORMAN EXPRESSWAY
BURNHAM ROAD TO US 41
ROADWAY PROFILE
FOR INFORMATION ONLY
STA. 8+800 TO STA. 9+150

SCALE 1:500
DATE 07/04

DRAWN BY ACE/CAD
CHECKED BY TAE

AMERICAN
CONSULTING ENGINEERS