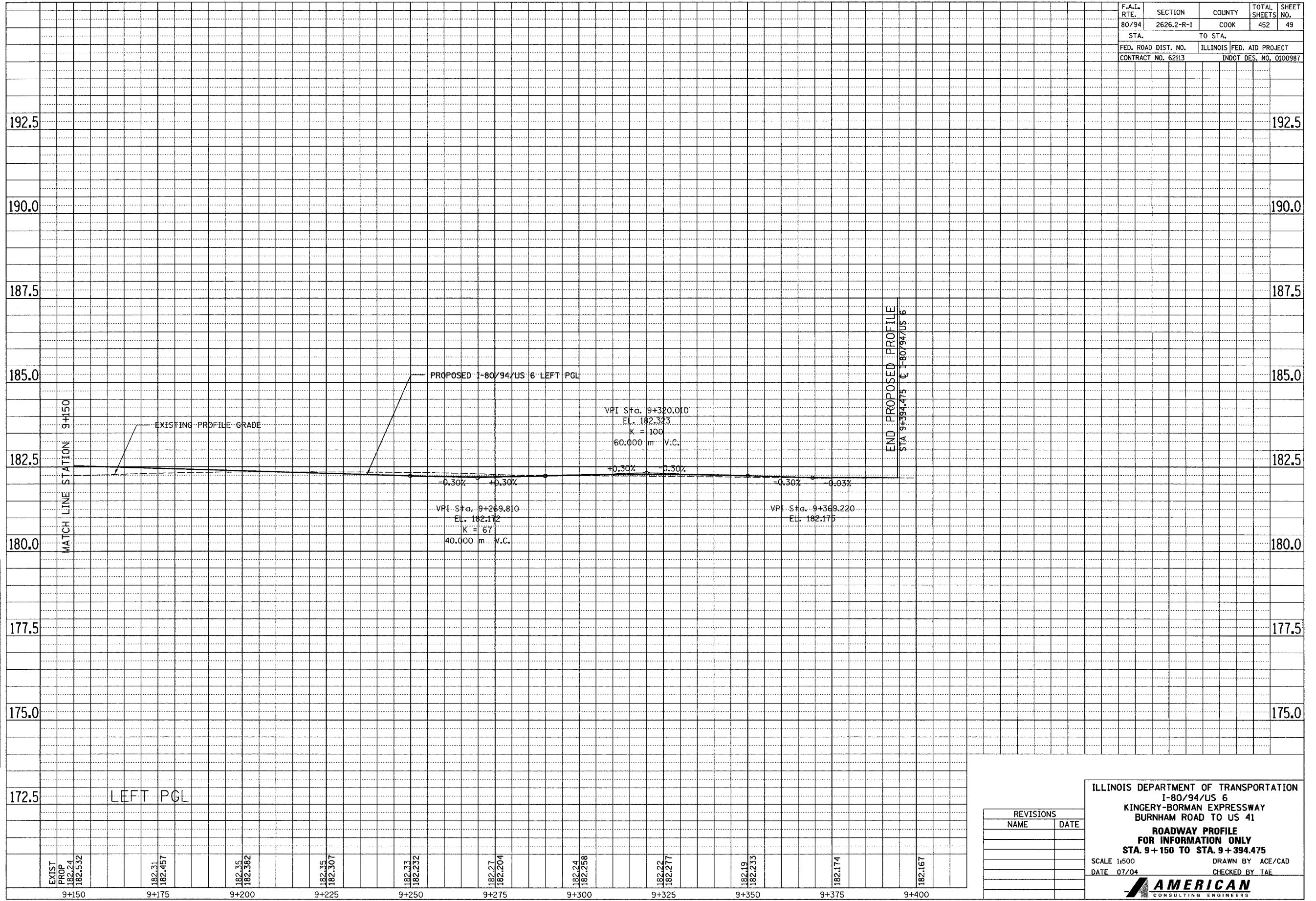


F.A.I. RTE.	SECTION	COUNTY	TOTAL SHEETS	SHEET NO.
80/94	2626.2-R-1	COOK	452	49
STA.		TO STA.		
FED. ROAD DIST. NO.		ILLINOIS FED. AID PROJECT		
CONTRACT NO. 62113		INDOT DES. NO. 0100987		

FINAL SURVEY PLOTTED	BY	DATE
NOTE BOOK TEMPLATE AREAS CHECKED		
NO.		

ORIGINAL SURVEY PLOTTED	BY	DATE
NOTE BOOK TEMPLATE AREAS CHECKED		
NO.		



LEFT PGL

EXIST PROP	182.24	182.532	9+150
	182.31	182.457	9+175
	182.35	182.382	9+200
	182.35	182.307	9+225
	182.33	182.232	9+250
	182.27	182.204	9+275
	182.24	182.258	9+300
	182.22	182.277	9+325
	182.19	182.233	9+350
	182.174		9+375
	182.167		9+400

END PROPOSED PROFILE
STA 9+394.475 @ I-80/94/US 6

REVISIONS	
NAME	DATE

ILLINOIS DEPARTMENT OF TRANSPORTATION
I-80/94/US 6
KINGERY-BORMAN EXPRESSWAY
BURNHAM ROAD TO US 41
ROADWAY PROFILE
FOR INFORMATION ONLY
STA. 9+150 TO STA. 9+394.475
SCALE 1:500 DRAWN BY ACE/CAD
DATE 07/04 CHECKED BY TAE