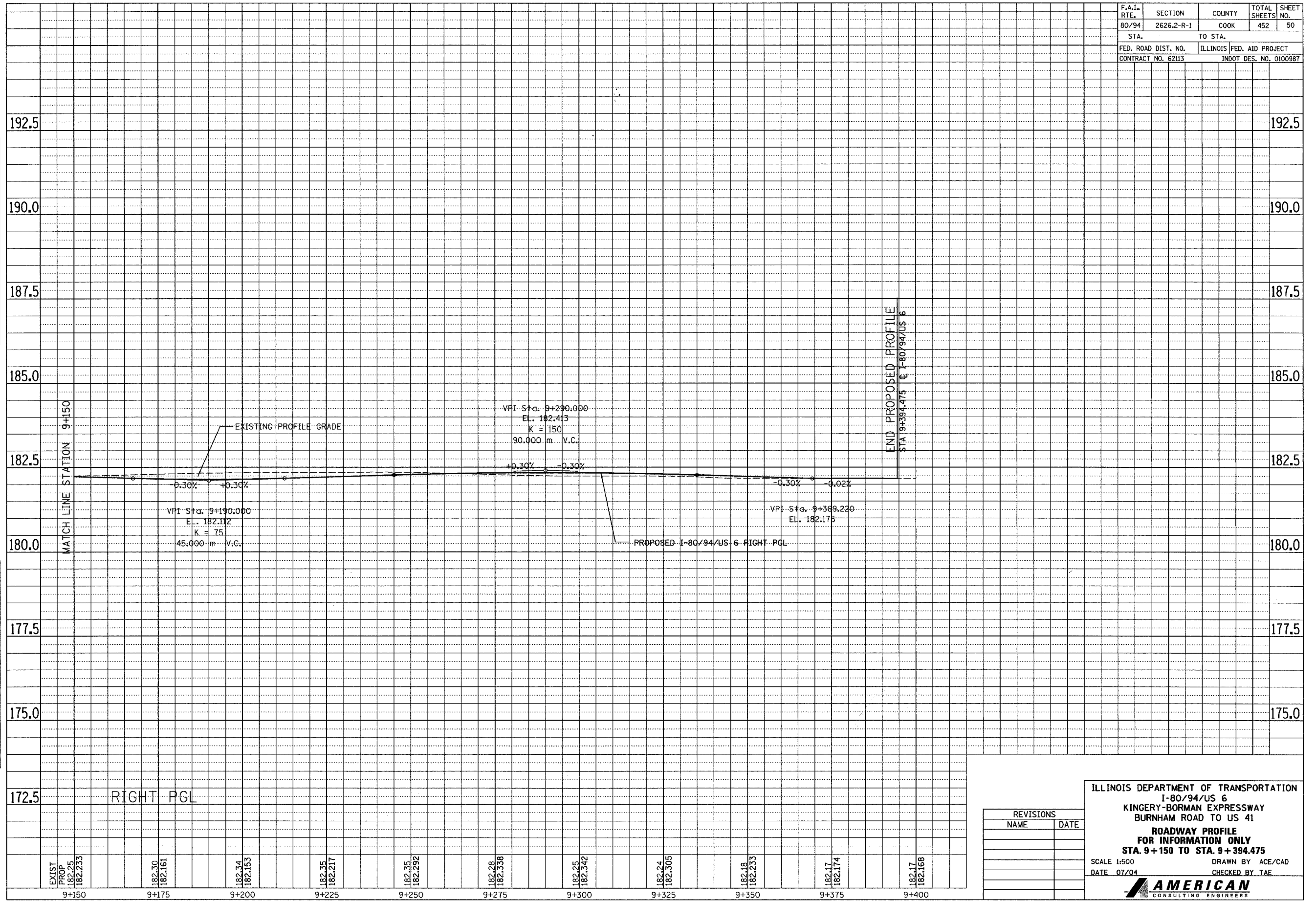


F.A.I. RTE.	SECTION	COUNTY	TOTAL SHEETS	SHEET NO.
80/94	2626.2-R-1	COOK	452	50
STA.		TO STA.		
FED. ROAD DIST. NO.		ILLINOIS	FED. AID PROJECT	
CONTRACT NO. 62113		INDOT DES. NO. 0100987		

FINAL SURVEY PLOTTED	BY	DATE
NOTE BOOK TEMPLATE AREAS CHECKED		
NO.		

ORIGINAL SURVEY PLOTTED	BY	DATE
NOTE BOOK TEMPLATE AREAS CHECKED		
NO.		



EXIST PROP	182.25	182.233	9+150
	182.30	182.161	9+175
	182.34	182.153	9+200
	182.35	182.217	9+225
	182.35	182.292	9+250
	182.28	182.338	9+275
	182.25	182.342	9+300
	182.24	182.305	9+325
	182.18	182.233	9+350
	182.17	182.174	9+375
	182.17	182.168	9+400

REVISIONS	
NAME	DATE

ILLINOIS DEPARTMENT OF TRANSPORTATION  
I-80/94/US 6  
KINGERY-BORMAN EXPRESSWAY  
BURNHAM ROAD TO US 41

**ROADWAY PROFILE  
FOR INFORMATION ONLY**  
STA. 9+150 TO STA. 9+394.475

SCALE 1:500  
DATE 07/04

DRAWN BY ACE/CAD  
CHECKED BY TAE

**AMERICAN**  
CONSULTING ENGINEERS