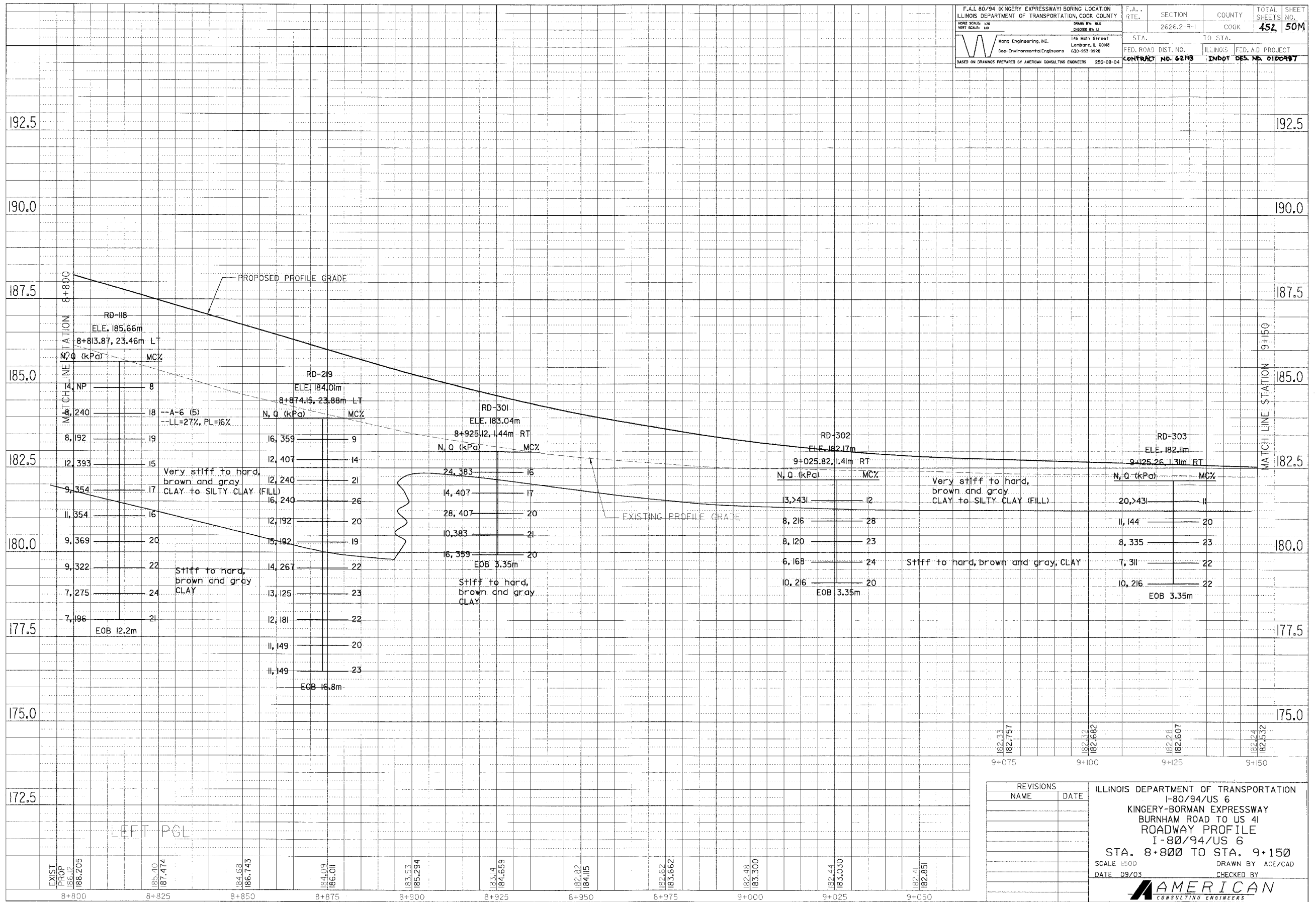


F.A.I. 80/94 (KINGERY EXPRESSWAY) BORING LOCATION ILLINOIS DEPARTMENT OF TRANSPORTATION, COOK COUNTY		F.A. RTE.	SECTION	COUNTY	TOTAL SHEETS	SHEET NO.
DRAWN BY: WJS CHECKED BY: JJJ		2626.2-R-1	COOK	452	50M	
Wang Engineering, Inc. Geo-Environmental Engineers		145 Main Street Lombard, IL 60148 630-953-9928		STA. TO STA. FED. ROAD DIST. NO. ILLINOIS CONTRACT NO. 62113 INDOT DES. NO. 0100497		
BASED ON DRAWINGS PREPARED BY AMERICAN CONSULTING ENGINEERS 255-08-04						

FINAL SURVEYED	BY	DATE
SURVEY PLOTTED		
NOTE BOOK TEMPLATE		
AREAS CHECKED		
NO.		

ORIGINAL SURVEYED	BY	DATE
SURVEY PLOTTED		
NOTE BOOK TEMPLATE		
AREAS CHECKED		
NO.		



182.33	182.757	182.92	182.882	182.98	182.607	182.94	182.532
9+075	9+100	9+125	9+150				

REVISIONS		ILLINOIS DEPARTMENT OF TRANSPORTATION I-80/94/US 6 KINGERY-BORMAN EXPRESSWAY BURNHAM ROAD TO US 41 ROADWAY PROFILE I-80/94/US 6 STA. 8+800 TO STA. 9+150 SCALE 1:500 DATE 09/03
NAME	DATE	
DRAWN BY ACE/CAD		CHECKED BY <b>AMERICAN</b> CONSULTING ENGINEERS