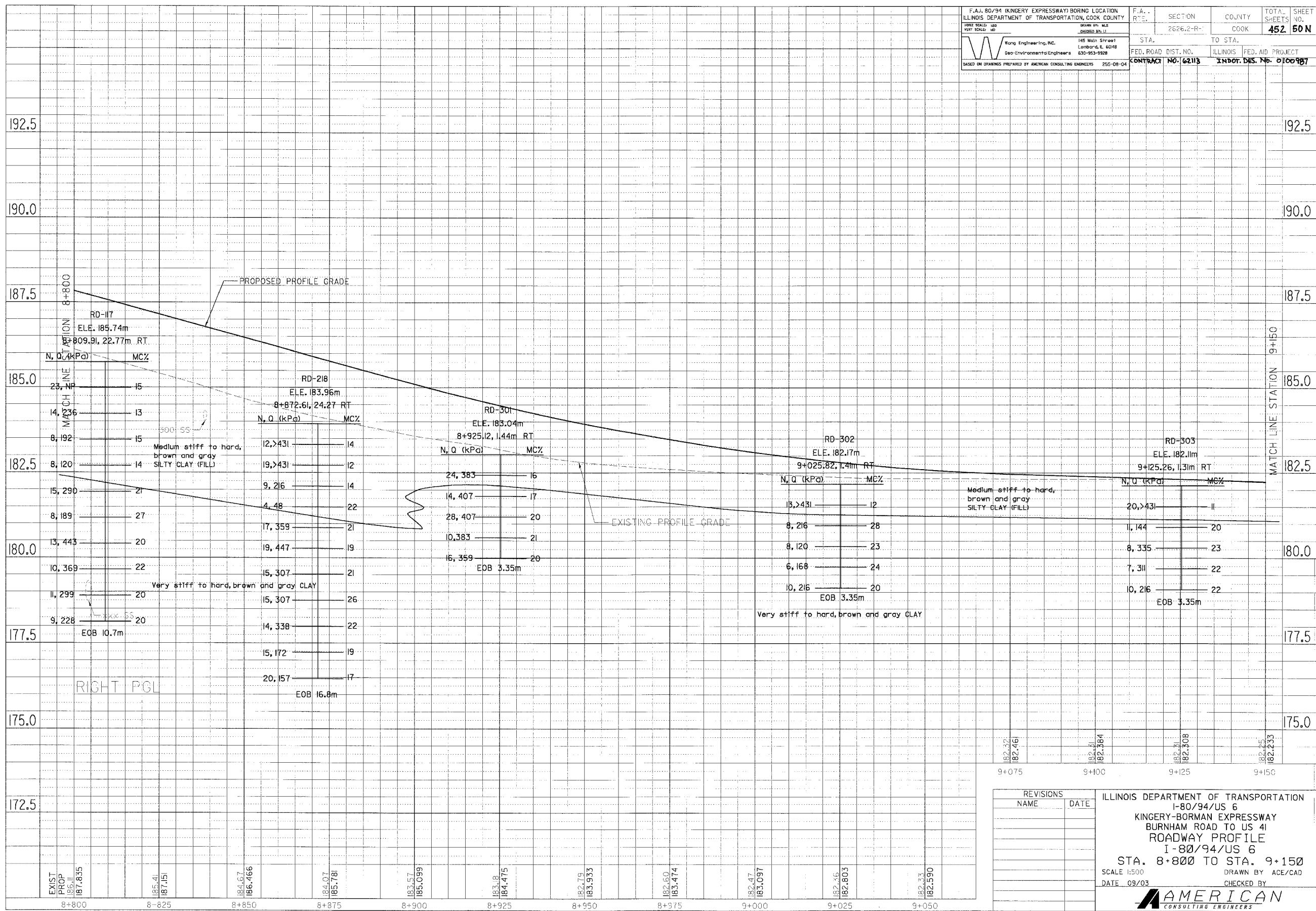


F.A. 80/94 (KINGERY EXPRESSWAY) BORING LOCATION ILLINOIS DEPARTMENT OF TRANSPORTATION, COOK COUNTY		F.A. R.T.E.	SECTION	COUNTY	TOTAL SHEETS	SHEET NO.
HORIZ. SCALE: 1"=50' VERT. SCALE: 1"=10'		2626.2-R-	COOK	452	50N	
Wong Engineering, Inc. Geo-Environment Engineers 145 Main Street Lombard, IL 60148 630-953-9928		STA.	TO STA.	FED. ROAD DIST. NO. ILLINOIS CONTRACT NO. 62113 INDOT. DES. NO. 0100987		
BASED ON DRAWINGS PREPARED BY AMERICAN CONSULTING ENGINEERS 255-08-04						

BY	DATE
FINAL SURVEYED	
SURVEY PLOTTED	
NOTE BOOK TEMPLATE	
AREAS CHECKED	
NO.	

BY	DATE
ORIGINAL SURVEYED	
SURVEY PLOTTED	
NOTE BOOK TEMPLATE	
AREAS CHECKED	
NO.	



182.37 182.261	9+075	182.41 182.384	9+100	182.41 182.308	9+125	182.41 182.233	9+150
REVISIONS		ILLINOIS DEPARTMENT OF TRANSPORTATION I-80/94/US 6 KINGERY-BORMAN EXPRESSWAY BURNHAM ROAD TO US 41 ROADWAY PROFILE I-80/94/US 6 STA. 8+800 TO STA. 9+150 SCALE 1:500 DATE 09/03					
NAME	DATE	DRAWN BY ACE/CAD CHECKED BY					
		AMERICAN CONSULTING ENGINEERS					