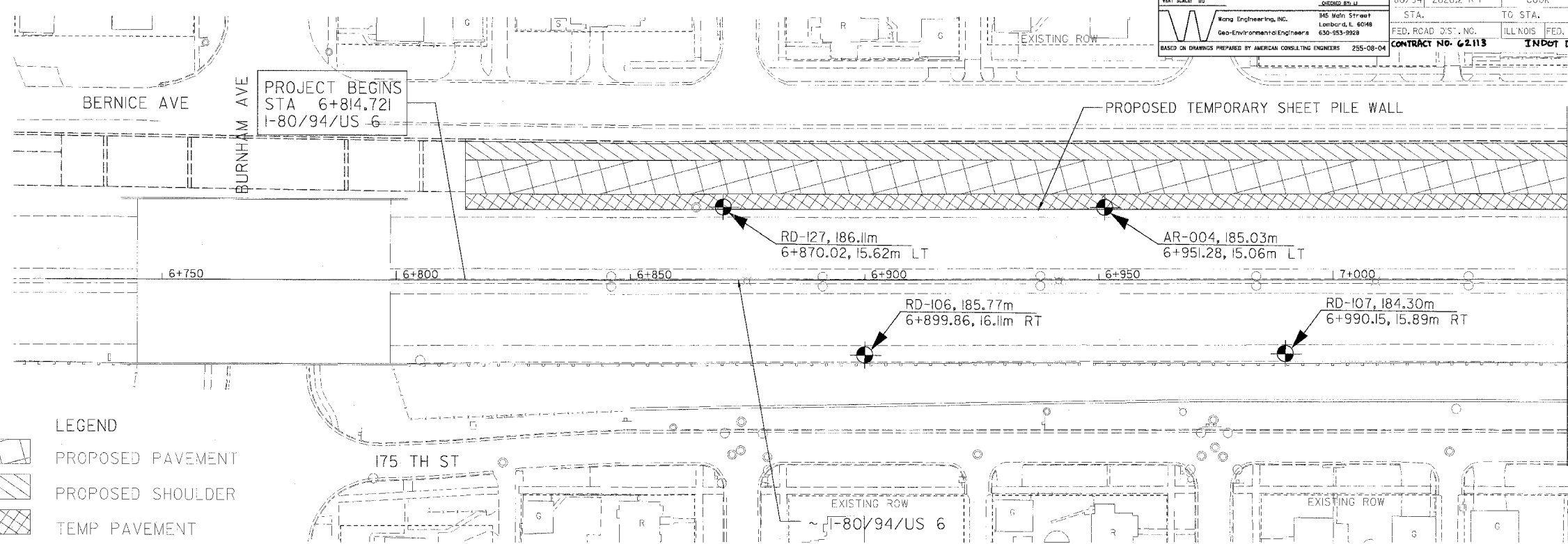
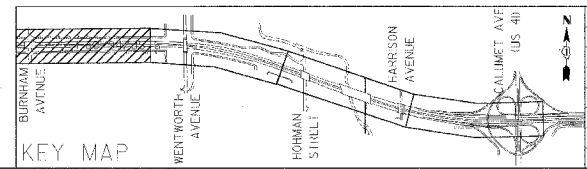
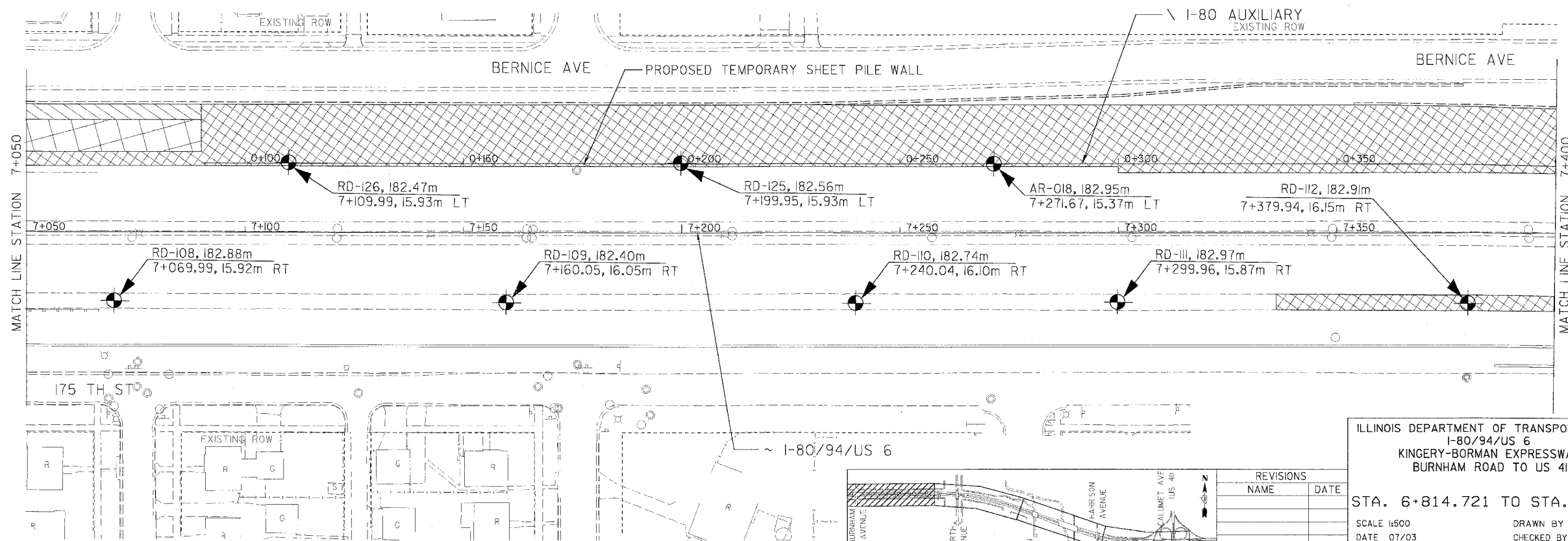


F.A.I. 80/94 (KINGERY EXPRESSWAY) BORING LOCATION ILLINOIS DEPARTMENT OF TRANSPORTATION, COOK COUNTY	F.A.I. RTE. 80/94	SECTION 2626.2-R-1	COUNTY COOK	TOTAL SHEET SHEETS NO. 452 508
DATE SCALE: H/D VERT SCALE: V/D	DATE: 08/02/03	STA. TO STA.	FED. ROAD DIST. NO. ILLINOIS	FED. AID PROJECT
Wong Engineering, Inc. Geo-Environmental Engineers 945 Main Street Lombard, IL 60148 630-953-9928		CONTRACT NO. 62113	INDOT DES. NO. 0160987	
BASED ON DRAWINGS PREPARED BY AMERICAN CONSULTING ENGINEERS 255-08-04				



LEGEND

	PROPOSED PAVEMENT
	PROPOSED SHOULDER
	TEMP PAVEMENT



REVISIONS	
NAME	DATE

ILLINOIS DEPARTMENT OF TRANSPORTATION  
I-80/94/US 6  
KINGERY-BORMAN EXPRESSWAY  
BURNHAM ROAD TO US 41

STA. 6+814.721 TO STA. 7+400

SCALE 1:500  
DATE 07/03

DRAWN BY ACE/CAD  
CHECKED BY TAE

**AMERICAN**  
CONSULTING ENGINEERS