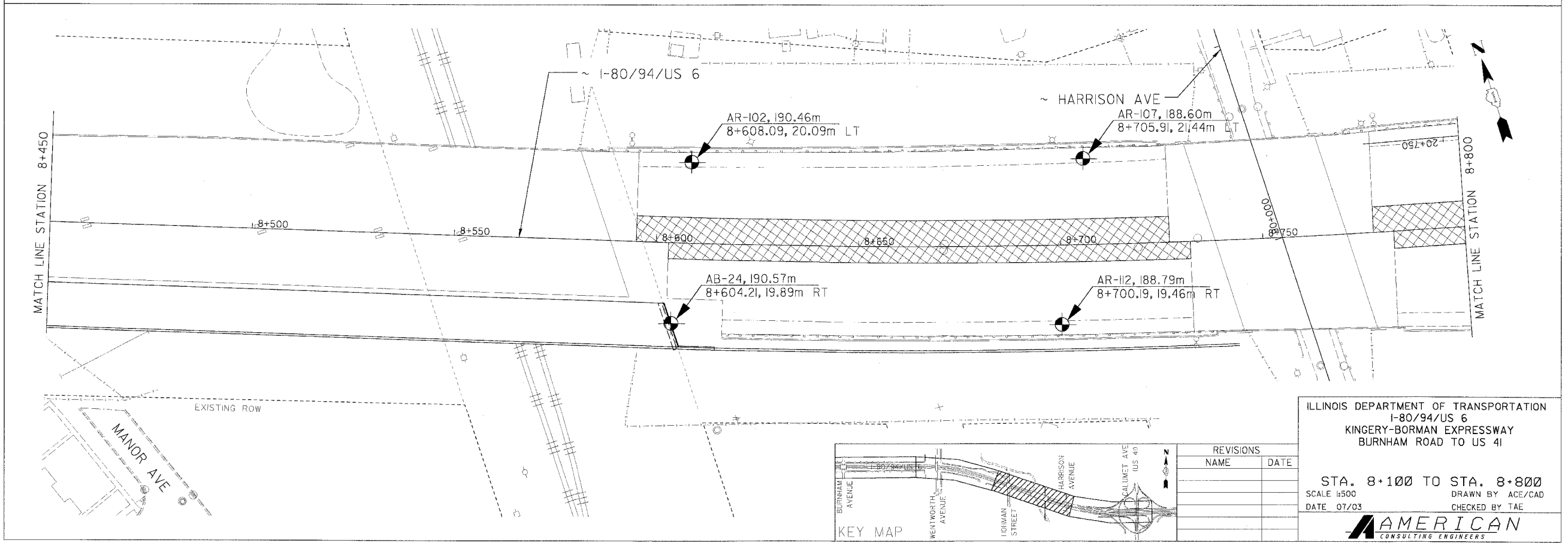
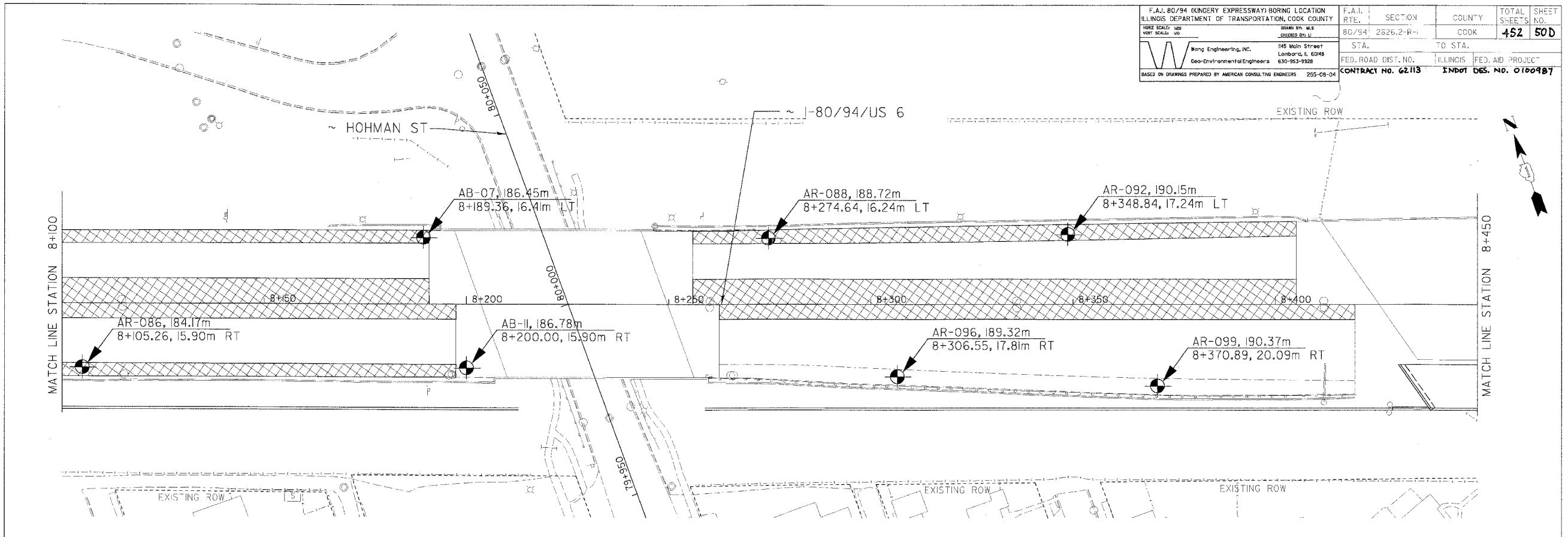


F.A.I. 80/94 (KINGERY EXPRESSWAY) BORING LOCATION ILLINOIS DEPARTMENT OF TRANSPORTATION, COOK COUNTY		F.A.I. RTE.	SECTION	COUNTY	TOTAL SHEETS	SHEET NO.
HORIZ SCALE: 1"=50' VERT SCALE: 1"=10'		80/94	2626.2-R-1	COOK	452	500
Wong Engineering, Inc. Geo-Environmental Engineers 145 Main Street Lombard, IL 60148 630-953-9328		STA.	TO STA.		FED. ROAD DIST. NO.	
BASED ON DRAWINGS PREPARED BY AMERICAN CONSULTING ENGINEERS 255-08-04		CONTRACT NO. 62113	INDOT DES. NO. 0100987		ILLINOIS FED. AID PROJECT	



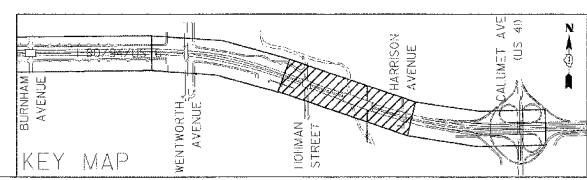
ILLINOIS DEPARTMENT OF TRANSPORTATION
I-80/94/US 6
KINGERY-BORMAN EXPRESSWAY
BURNHAM ROAD TO US 41

STA. 8+100 TO STA. 8+800
SCALE 1:500
DATE 07/03

DRAWN BY ACE/CAD
CHECKED BY TAE

AMERICAN
CONSULTING ENGINEERS

REVISIONS	
NAME	DATE



I-80/94/US 6 07/03 2:36:30 PM