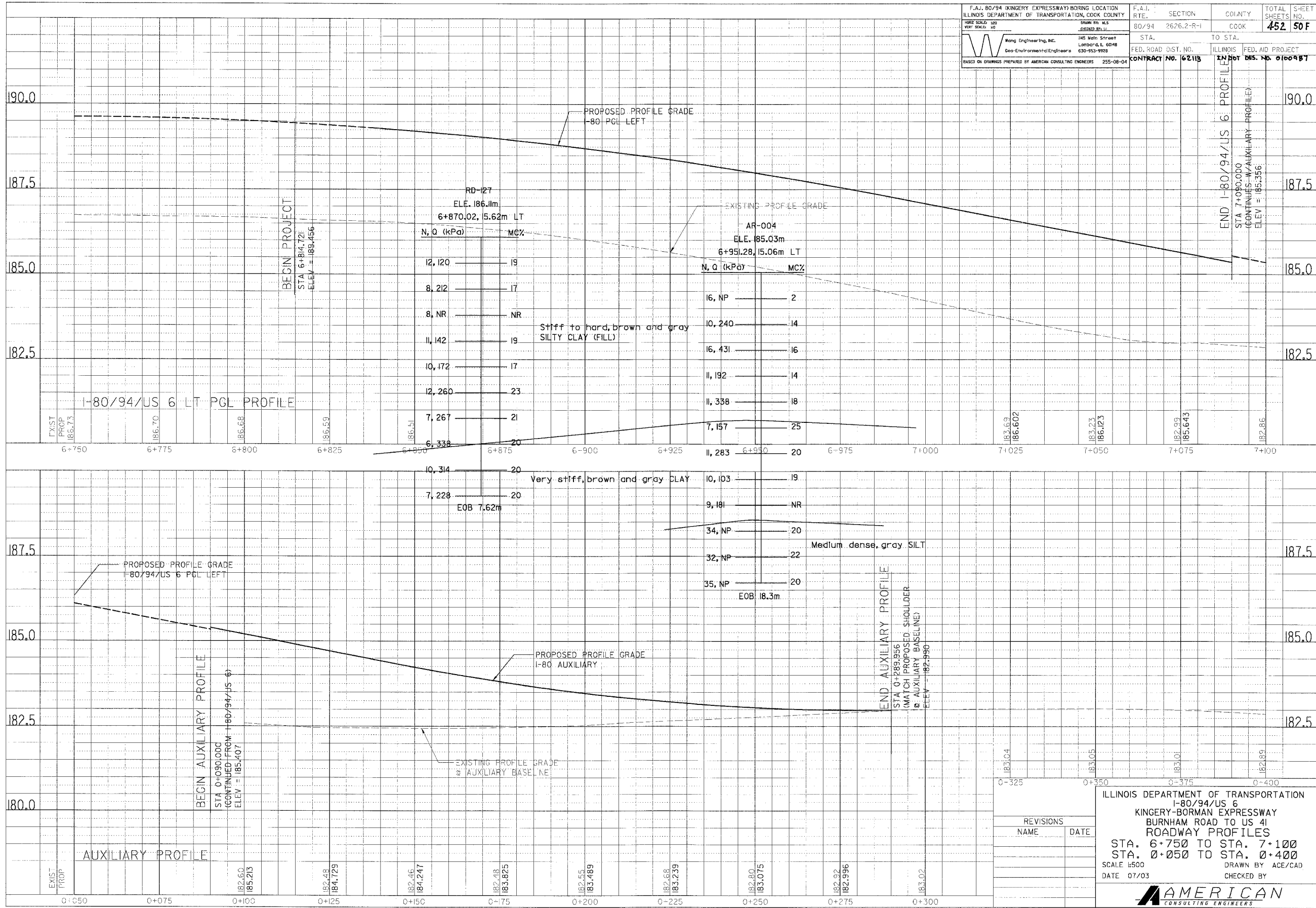


FINAL SURVEYED SURVEY PLOTTED NOTE BOOK TEMPLATE AREAS CHECKED

ORIGINAL SURVEYED SURVEY PLOTTED NOTE BOOK TEMPLATE AREAS CHECKED

F.A.I. 80/94 (KINGERY EXPRESSWAY) BORING LOCATION ILLINOIS DEPARTMENT OF TRANSPORTATION, COOK COUNTY	F.A.I. SECTION 80/94 2626.2-R-1	COUNTY COOK	TOTAL SHEETS 452	SHEET NO. 50F
DATE 08/94	DESIGNED BY J.L.	STA. TO STA. 6+750 TO 7+100	ILLINOIS FED. AID PROJECT	CONTRACT NO. 62115 IN BOT 065. NO. 0100987
Wang Engineering, Inc. 245 Main Street Lombard, IL 60148 630-953-9928		DRAWN BY ACE		
BASED ON DRAWINGS PREPARED BY AMERICAN CONSULTING ENGINEERS 255-08-04		FED. ROAD DIST. NO. ILLINOIS		



REVISIONS	NAME	DATE

ILLINOIS DEPARTMENT OF TRANSPORTATION  
I-80/94/US 6  
KINGERY-BORMAN EXPRESSWAY  
BURNHAM ROAD TO US 41  
ROADWAY PROFILES  
STA. 6+750 TO STA. 7+100  
STA. 0+050 TO STA. 0+400  
SCALE 1:500  
DATE 07/03  
DRAWN BY ACE/CAD  
CHECKED BY

**AMERICAN CONSULTING ENGINEERS**