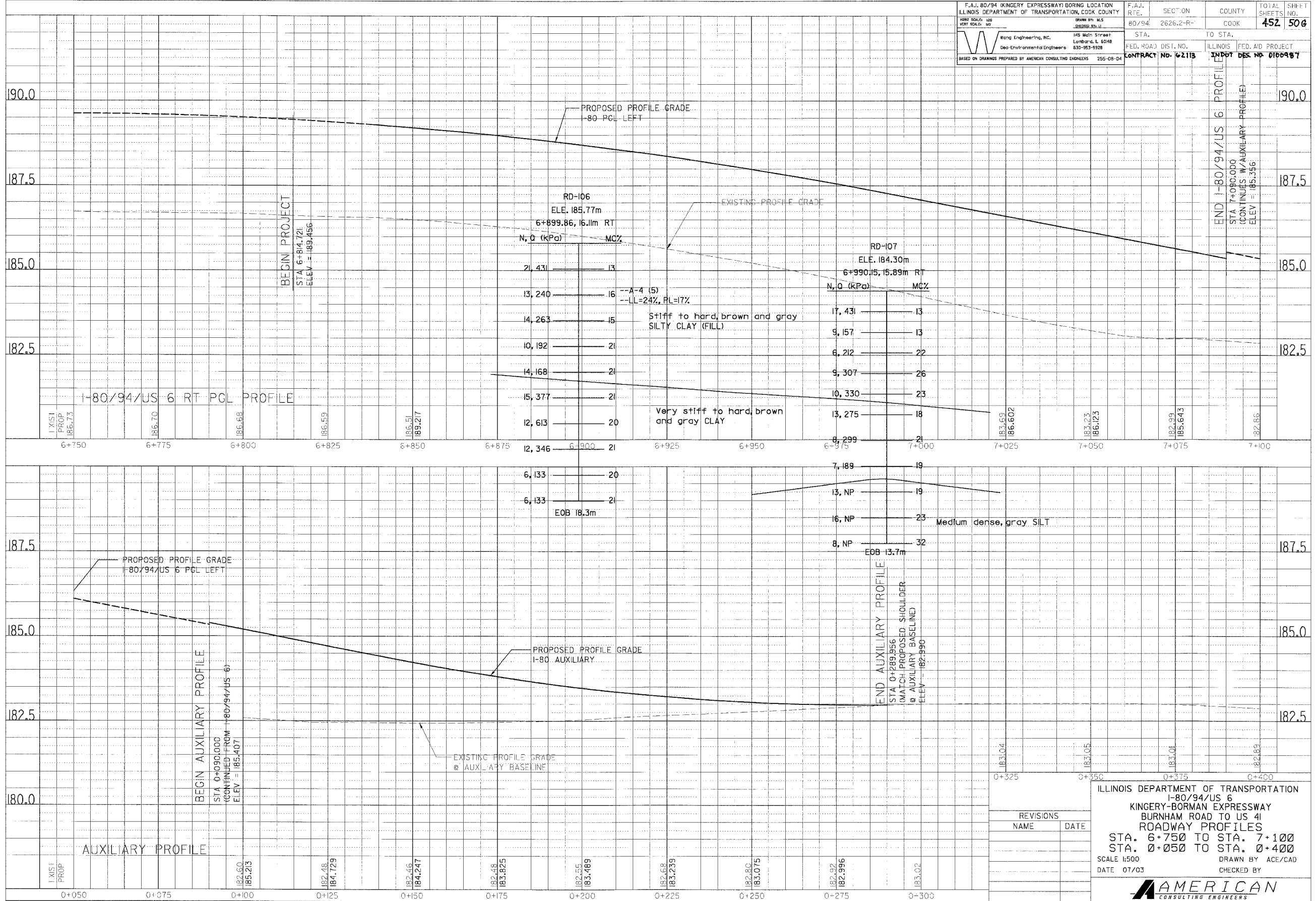


F.A.J. 80/94 (KINGERY EXPRESSWAY) BORING LOCATION ILLINOIS DEPARTMENT OF TRANSPORTATION, COOK COUNTY		F.A.J. R.T.E.	SECTION	COUNTY	TOTAL SHEETS	SHEET NO.
DRAWN BY: M.S. CHECKED BY: J.L.		80/94	2626.2-R-	COOK	452	506
Wang Engineering, Inc. Geo-Environmental Engineers 145 Main Street Lombard, IL 60148 630-953-9928		STA.	TO STA.	ILLINOIS	FED. AID PROJECT	
BASED ON DRAWINGS PREPARED BY AMERICAN CONSULTING ENGINEERS 255-08-04		CONTRACT NO. 62113	INDOT DES. NO. 0166987			

BY	DATE

BY	DATE



REVISIONS	
NAME	DATE

ILLINOIS DEPARTMENT OF TRANSPORTATION  
I-80/94/US 6  
KINGERY-BORMAN EXPRESSWAY  
BURNHAM ROAD TO US 41  
ROADWAY PROFILES  
STA. 6+750 TO STA. 7+100  
STA. 0+050 TO STA. 0+400  
SCALE 1:500  
DATE 07/03  
DRAWN BY ACE/CAD  
CHECKED BY

**AMERICAN CONSULTING ENGINEERS**