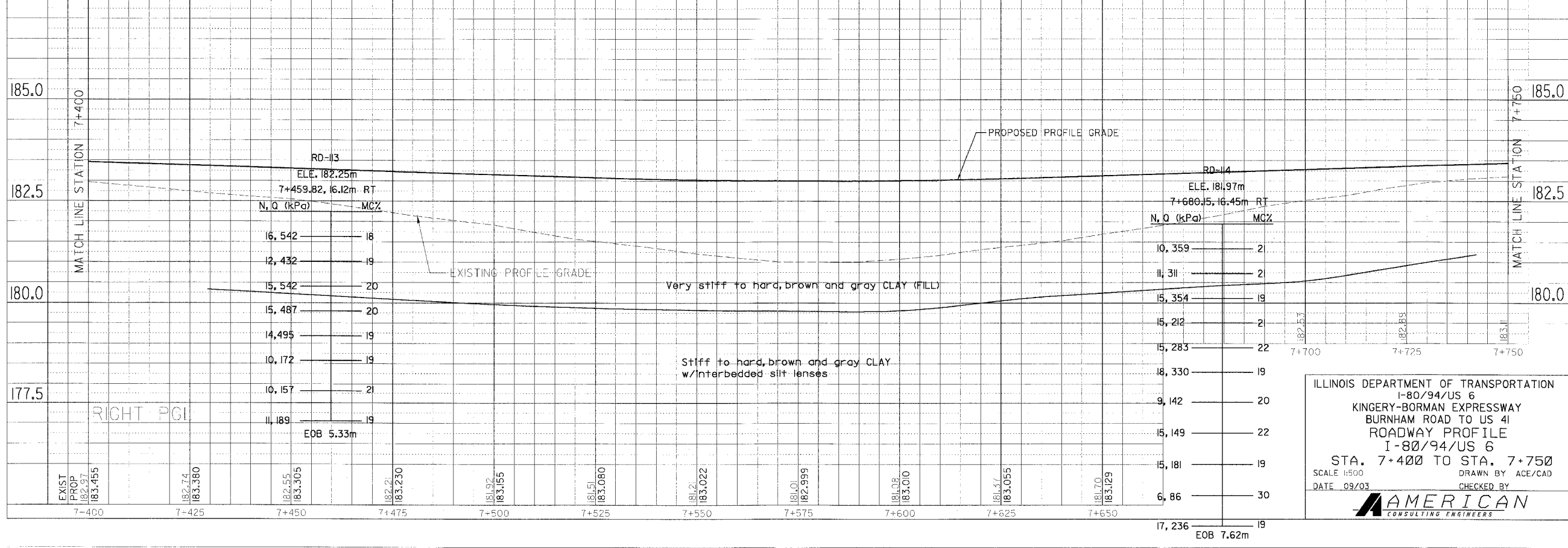
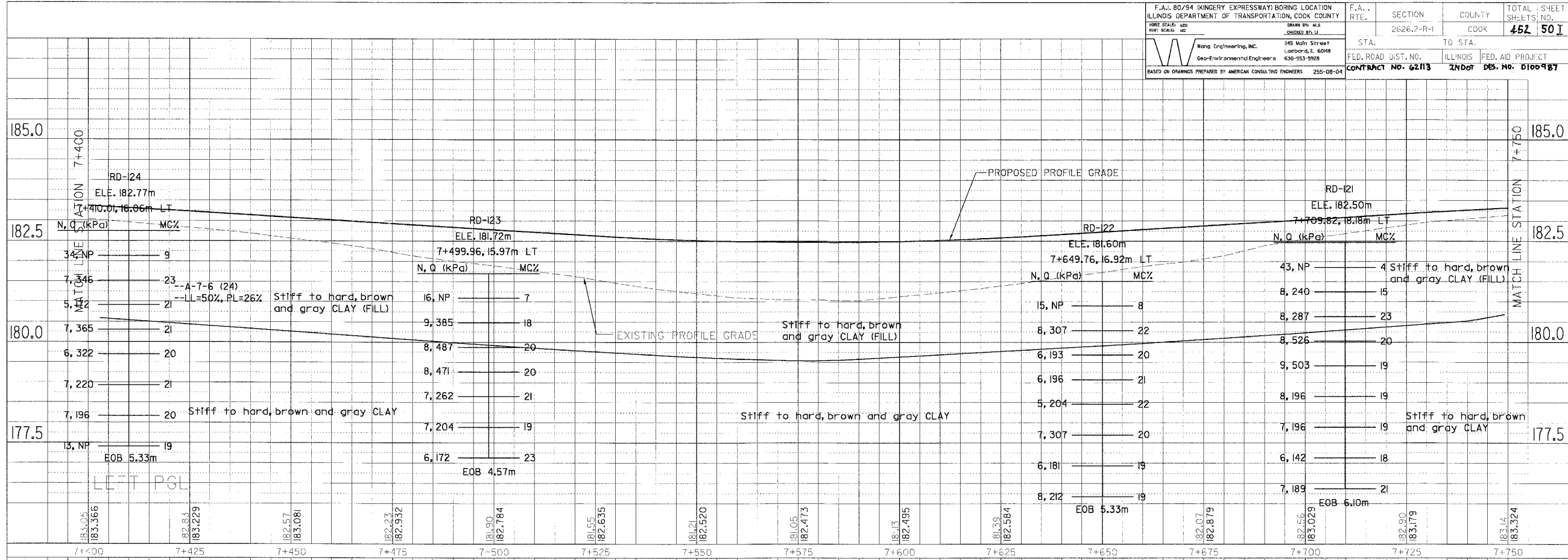


F.A. 80/94 (KINGERY EXPRESSWAY) BORING LOCATION ILLINOIS DEPARTMENT OF TRANSPORTATION, COOK COUNTY	F.A. RTE. 2626.2-R-1	SECTION	COUNTY COOK	TOTAL SHEETS 50
DATE 09/03	SCALE 1:500	DRAWN BY ACE/CAD	CHECKED BY	
STA. 7+400 TO STA. 7+750	FED. ROAD DIST. NO. ILLINOIS	FED. AID PROJECT	CONTRACT NO. 62113	INDOT DES. NO. D166-987

DATE	
BY	
ORIGINAL SURVEYED	
SURVEY PLOTTED	
NOTE BOOK TEMPLATE	
AREAS CHECKED	
NO.	

DATE	
BY	
ORIGINAL SURVEYED	
SURVEY PLOTTED	
NOTE BOOK TEMPLATE	
AREAS CHECKED	
NO.	



ILLINOIS DEPARTMENT OF TRANSPORTATION
I-80/94/US 6
KINGERY-BORMAN EXPRESSWAY
BURNHAM ROAD TO US 41
ROADWAY PROFILE
I-80/94/US 6
STA. 7+400 TO STA. 7+750
SCALE 1:500
DATE 09/03
DRAWN BY ACE/CAD
CHECKED BY

AMERICAN
CONSULTING ENGINEERS

Working File: I-80/94/US 6_750.dwg 7/7/2004 2:40:44 PM