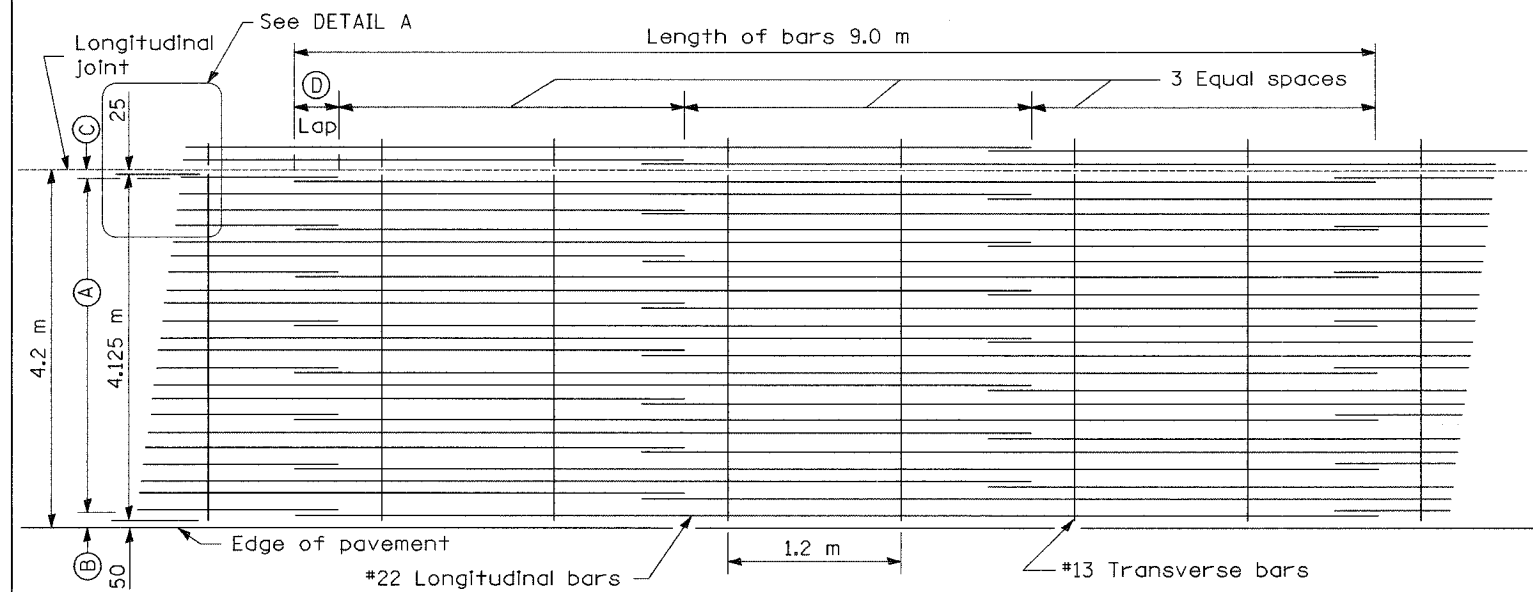
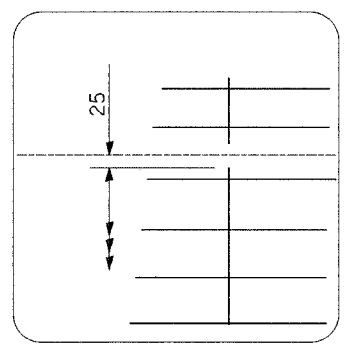


F.A.I. RTE.	SECTION	COUNTY	TOTAL SHEETS	SHEET NO.
80/94	2626.2-R-1	COOK	452	54
STA.	TO STA.			
FED. ROAD DIST. NO.	ILLINOIS	FED. AID PROJECT		
CONTRACT NO. 62113	INDOT DES. NO. 0100987			

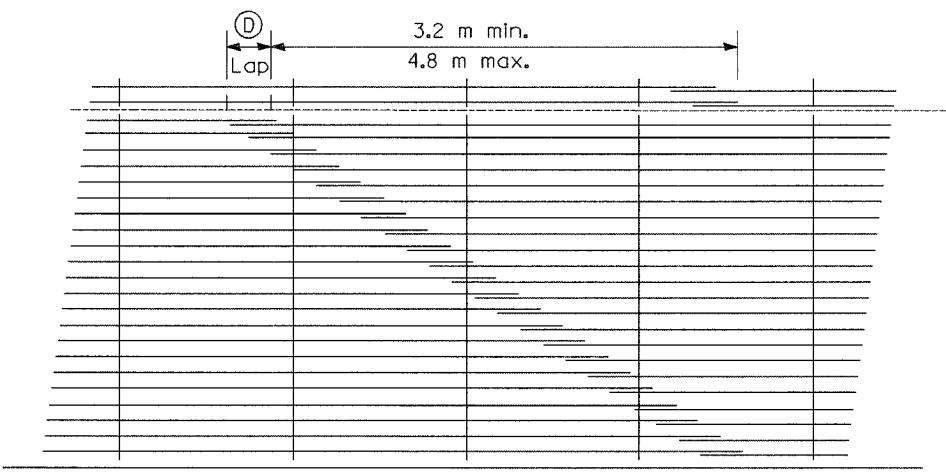


LAP DETAIL I

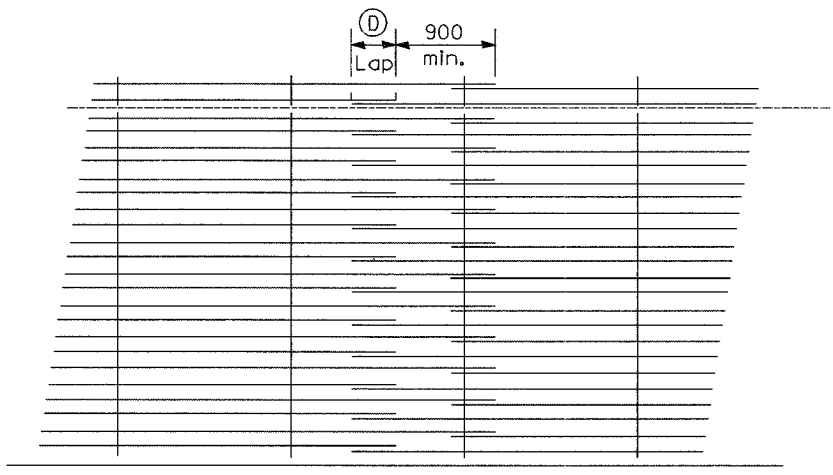
METRIC (mm)					
Bar Size	Pavement Thickness	(A) (Approx. Spacing)	(B)	(C)	(D)
#22	360	31 spaces (32 bars) @ 130	90	75	660



DETAIL A



LAP DETAIL II



LAP DETAIL III

GENERAL NOTES

Except as noted or shown, the dimensions and notes specified for LAP DETAIL I are typical for LAP DETAIL II and III.

The (B) dimension and the distance from the end of the transverse bar to the edge of pavement may be increased by 25 mm for slip form paving.

See Standard 421001 for details of pavement reinforcement for 3.6 m lane.

All dimensions are in millimeters (inches) unless otherwise shown.

REVISIONS	
NAME	DATE

ILLINOIS DEPARTMENT OF TRANSPORTATION  
 I-80/94/US 6  
 KINGERY-BORMAN EXPRESSWAY  
 BURNHAM ROAD TO US 41

**BAR REINFORCEMENT  
 FOR 4.2 M CRC PAVEMENT**

SCALE NONE DRAWN BY ACE/CAD  
 DATE 07/04 CHECKED BY TAE

**AMERICAN**  
 CONSULTING ENGINEERS