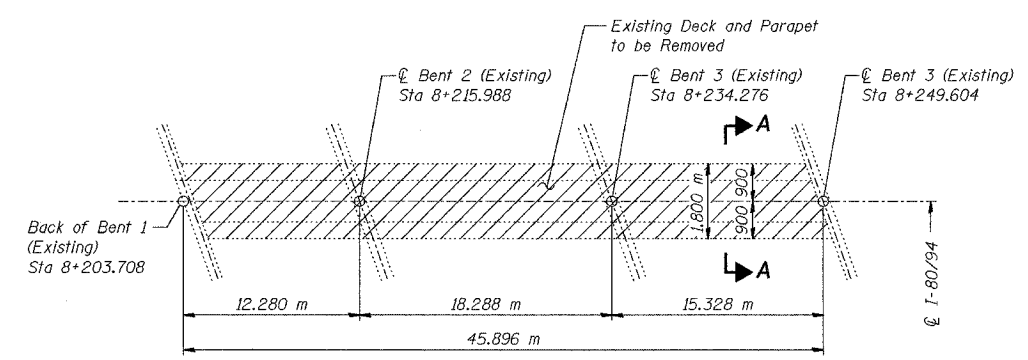
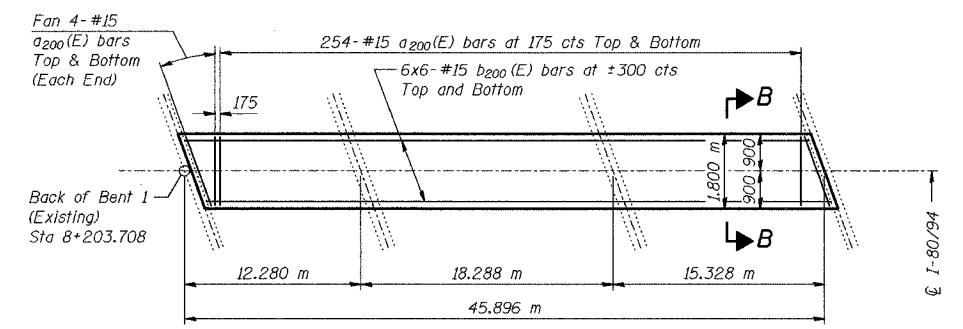


ROUTE NO.	SECTION	COUNTY	TOTAL SHEETS	SHEET NO.	SHEET NO. S-1
F.A.L. NO. 74	2626.2-R-2	LAKE COUNTY, INDIANA	452	59	1 SHEETS
ALIGNMENT		FED. AID PROJECT			

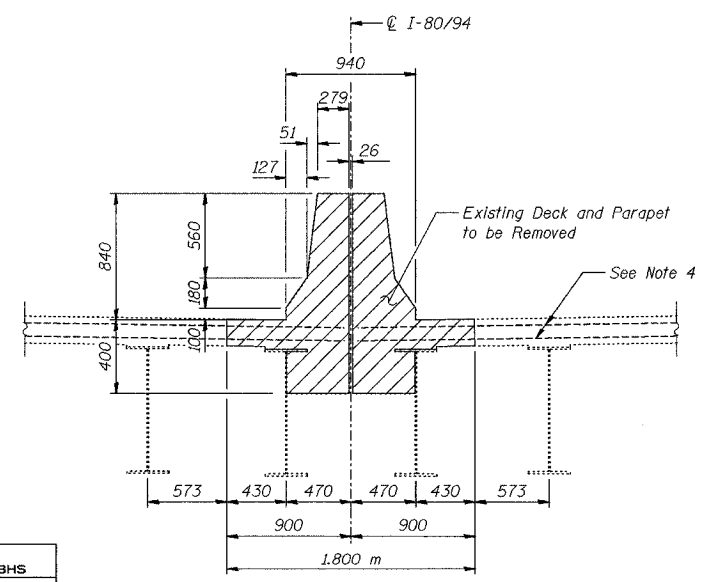
CONTRACT NO. 62113 INDOT DES. NO. 0100987



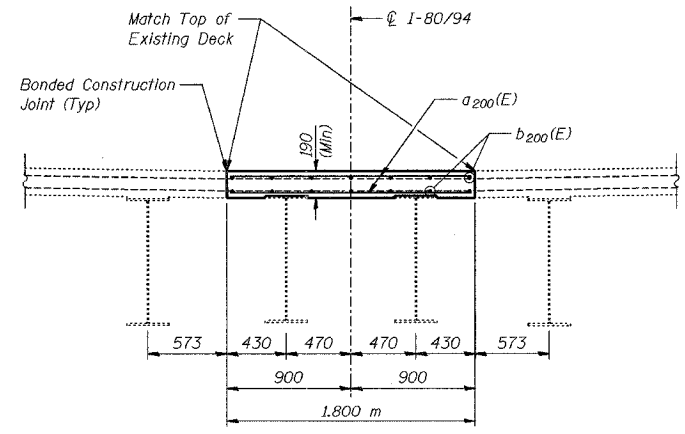
PLAN - CONCRETE REMOVAL



PLAN - CONCRETE REPLACEMENT



SECTION A-A



SECTION B-B

**MINIMUM BAR LAPS**  
#15 bars = 640

- NOTES:**
1. Reinforcement bars designated (E) shall be epoxy coated.
  2. Bars indicated thus 20 x 3-#15 etc. indicates 20 lines of bars with 3 lengths per line.
  3. All dimensions are in millimeters (mm) except as noted.
  4. Existing transverse reinforcement extending into removal area shall be cleaned, straightened and incorporated into new construction. Cost included with "Concrete Removal".
  5. Plan dimensions relative to existing structures are subject to nominal construction variations.

REVISED KFA 10-15-04

**BILL OF MATERIAL**

Bar	No.	Size	Length (m)	Shape
a200(E)	524	#15	1.70	—
b200(E)	72	#15	8.17	—
Concrete Removal			m <sup>3</sup>	50.9
Concrete Superstructure			m <sup>3</sup>	15.7
Reinforcement Bars, Epoxy Coated			kg	2,320
Protective Shield			m <sup>2</sup>	135

DESIGNED	BHS
CHECKED	KFA
DRAWN	BHS
CHECKED	GSP

ILLINOIS DEPARTMENT OF TRANSPORTATION  
F.A.L. ROUTE 80/94 (BORMAN EXPRESSWAY)  
OVER HOHMAN AVENUE

**DECK CLOSURE DETAILS; HOHMAN AVE  
SECTION 2626.2-R-2  
LAKE COUNTY, INDIANA  
STATION 8+225.132  
STRUCTURE NO. I-80-1-8459 (EB & WB)**

DATE 10/04 (016-1001 & 016-1002)

**AMERICAN**  
CONSULTING ENGINEERS