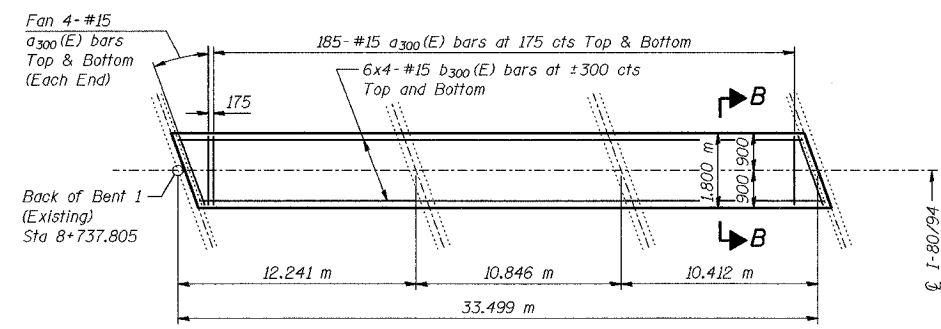
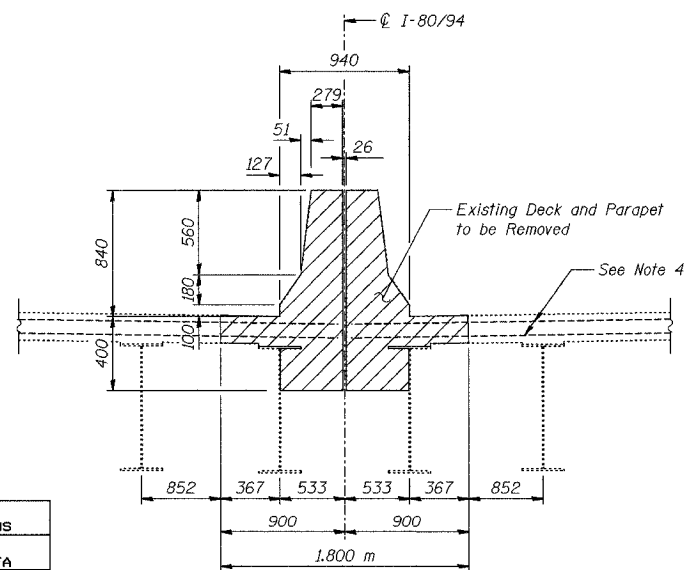


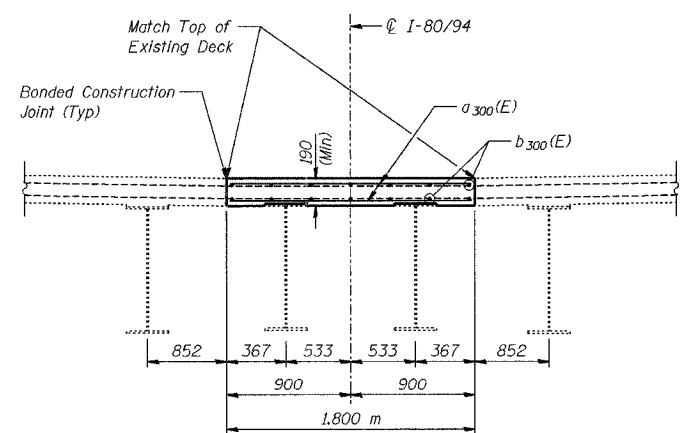
PLAN - CONCRETE REMOVAL



PLAN - CONCRETE REPLACEMENT



SECTION A-A



SECTION B-B

DESIGNED	BHS
CHECKED	KFA
DRAWN	BHS
CHECKED	GSP

BILL OF MATERIAL

Bar	No.	Size	Length (m)	Shape
a ₃₀₀ (E)	386	#15	1.70	—
b ₃₀₀ (E)	48	#15	8.83	—
Concrete Removal			m ³	38.1
Concrete Superstructure			m ³	11.5
Reinforcement Bars, Epoxy Coated			kg	1,700
Protective Shield			m ²	117

MINIMUM BAR LAPS

#15 bars = 640

NOTES:

1. Reinforcement bars designated (E) shall be epoxy coated.
2. Bars indicated thus 20 x 3- #15 etc. indicates 20 lines of bars with 3 lengths per line.
3. All dimensions are in millimeters (mm) except as noted.
4. Existing transverse reinforcement extending into removal area shall be cleaned, straightened and incorporated into new construction. Cost included with "Concrete Removal".
5. Plan dimensions relative to existing structures are subject to nominal construction variations.

REVISD KFA 10-15-04

ILLINOIS DEPARTMENT OF TRANSPORTATION
 F.A.L. ROUTE 80/94 (BORMAN EXPRESSWAY)
 OVER HARRISON AVENUE

DECK CLOSURE DETAILS; HARRISON AVE
 SECTION 2626.2-R-2
 LAKE COUNTY, INDIANA
 STATION 8+754.874
 STRUCTURE NO. I-80-1-8461 (EB & WB)
 DATE 10/04 (016-1005 & 016-1006)

AMERICAN
 CONSULTING ENGINEERS