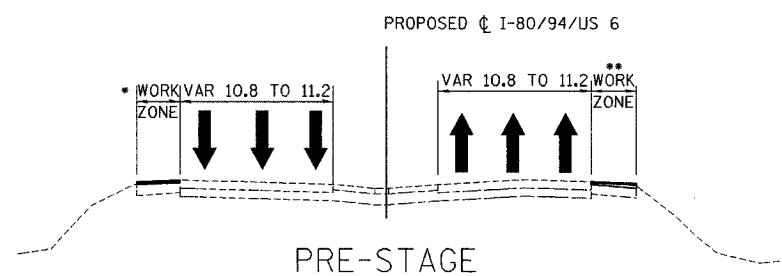
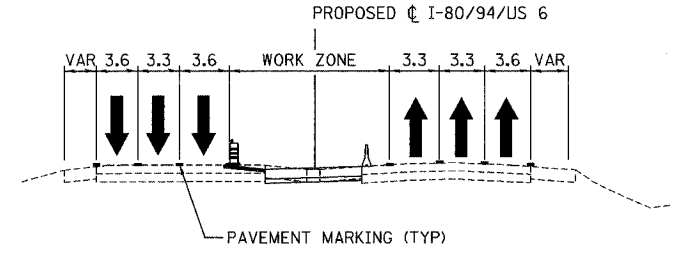


F.A.I. RTE.	SECTION	COUNTY	TOTAL SHEETS	SHEET NO.
80/94	2626.2-R-1	COOK	452	66
STA.	TO STA.			
FED. ROAD DIST. NO.	ILLINOIS	FED. AID PROJECT		
CONTRACT NO. 62113	INDOT DES. NO. 0100987			

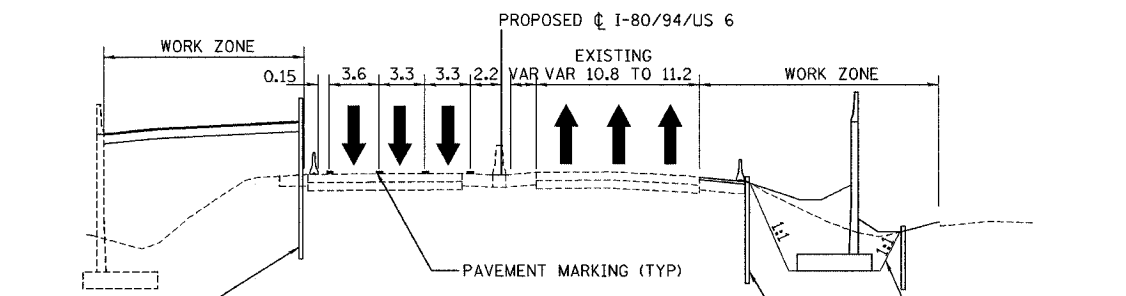
ALL DIMENSIONS IN METERS EXCEPT PAY ITEMS AND UNLESS NOTED OTHERWISE



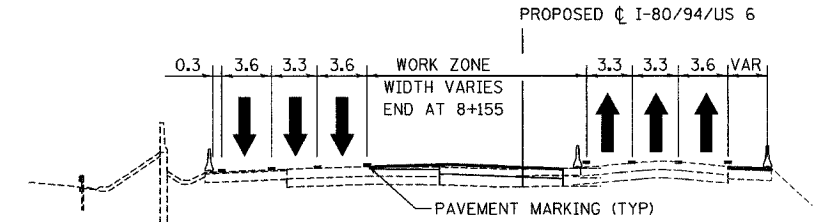
- WESTBOUND SHOULDER WORK FROM STA 8+016 TO STA 8+405
- EASTBOUND SHOULDER WORK FROM STA 7+550 TO STA 8+197



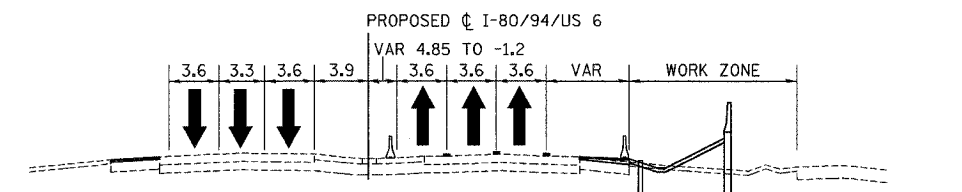
STAGE 1  
STA 8+250 TO STA 9+200



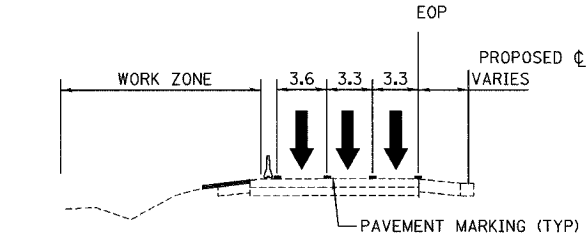
STAGE 1 & STAGE 2  
STA 6+815 TO 7+600  
STA 7+825 TO 8+059 RIGHT (ST. 2 ONLY)



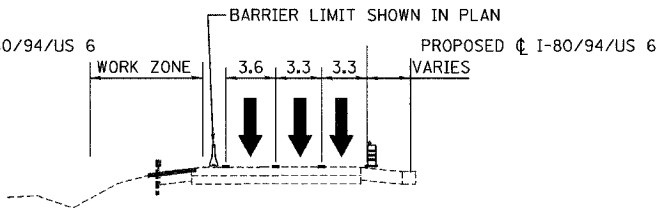
STAGE 2  
STA 7+600 TO 8+170 RIGHT  
STA 7+600 TO 7+993 LEFT



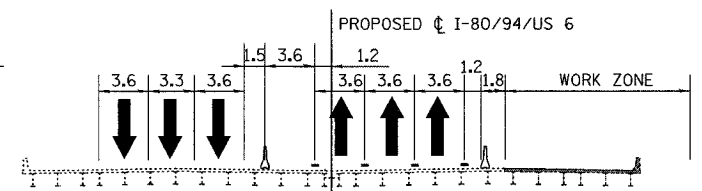
STAGE 2  
STA 8+170 TO 8+412 RIGHT  
STA 7+993 TO 9+350 LEFT



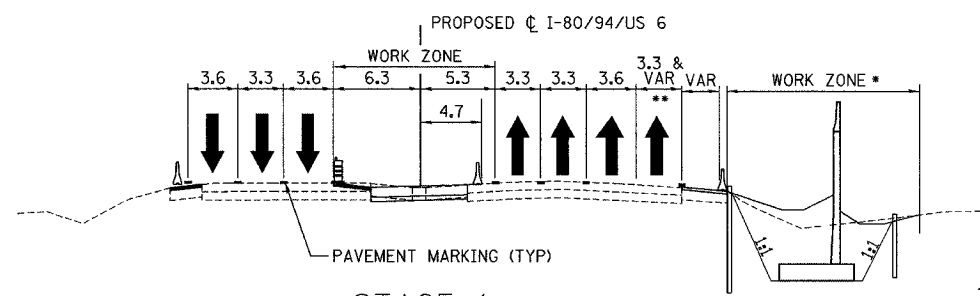
STAGE 1  
STA 7+600 TO 7+911 LEFT



STAGE 1  
STA 7+911 TO 8+155 LEFT

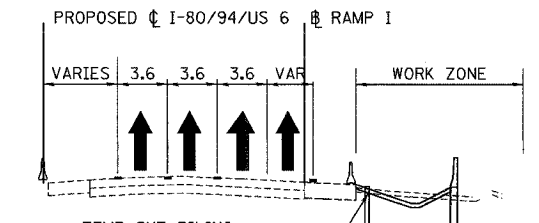


STAGE 2  
STA 8+412 TO 8+603  
LITTLE CALUMET RIVER



STAGE 1  
STA 8+155 TO 9+250 LEFT  
STA 8+145 TO 8+886 RIGHT

- APPLIES TO EASTBOUND THROUGH STA 8+215.00
- VARIES 0.0 TO 3.3 ADD LANE STA 8+250 TO 8+415



STAGE 2  
STA 8+603 TO 8+874 RIGHT

REVISIONS	
NAME	DATE

ILLINOIS DEPARTMENT OF TRANSPORTATION  
I-80/94/US 6  
KINGERY-BORMAN EXPRESSWAY  
BURNHAM ROAD TO US 41  
MAINTENANCE OF TRAFFIC

SCALE 1:500  
DATE 07/04  
DRAWN BY ACE/CAD  
CHECKED BY TAE

