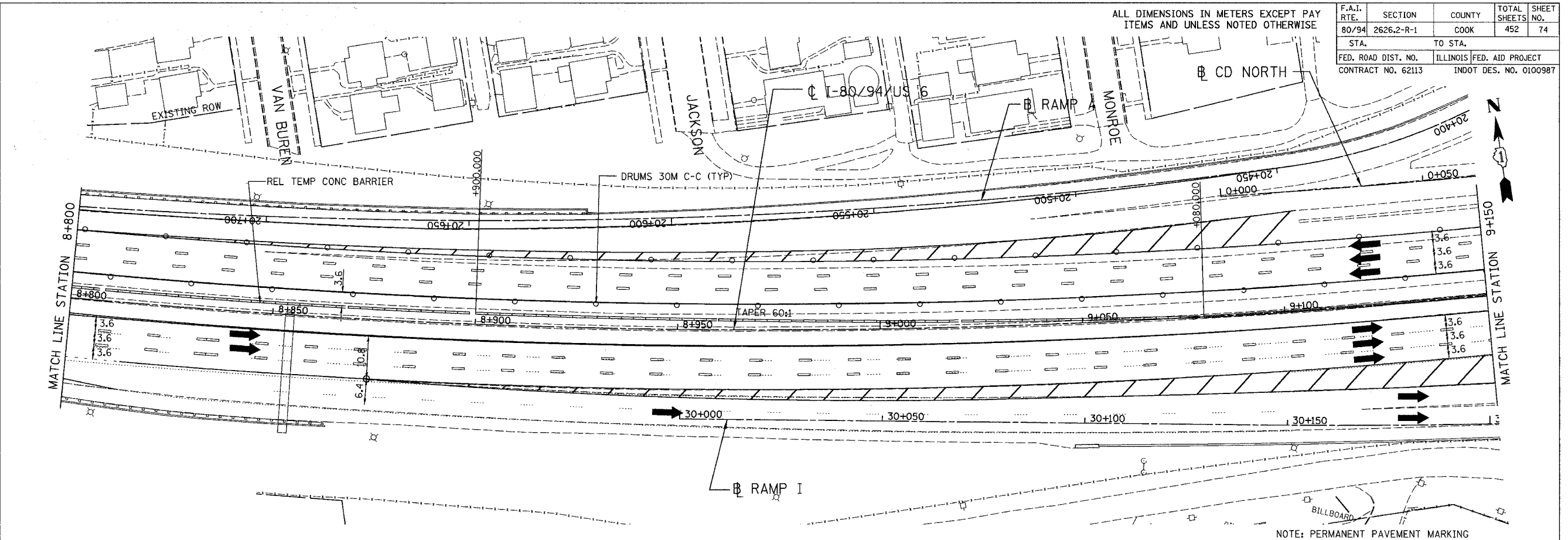
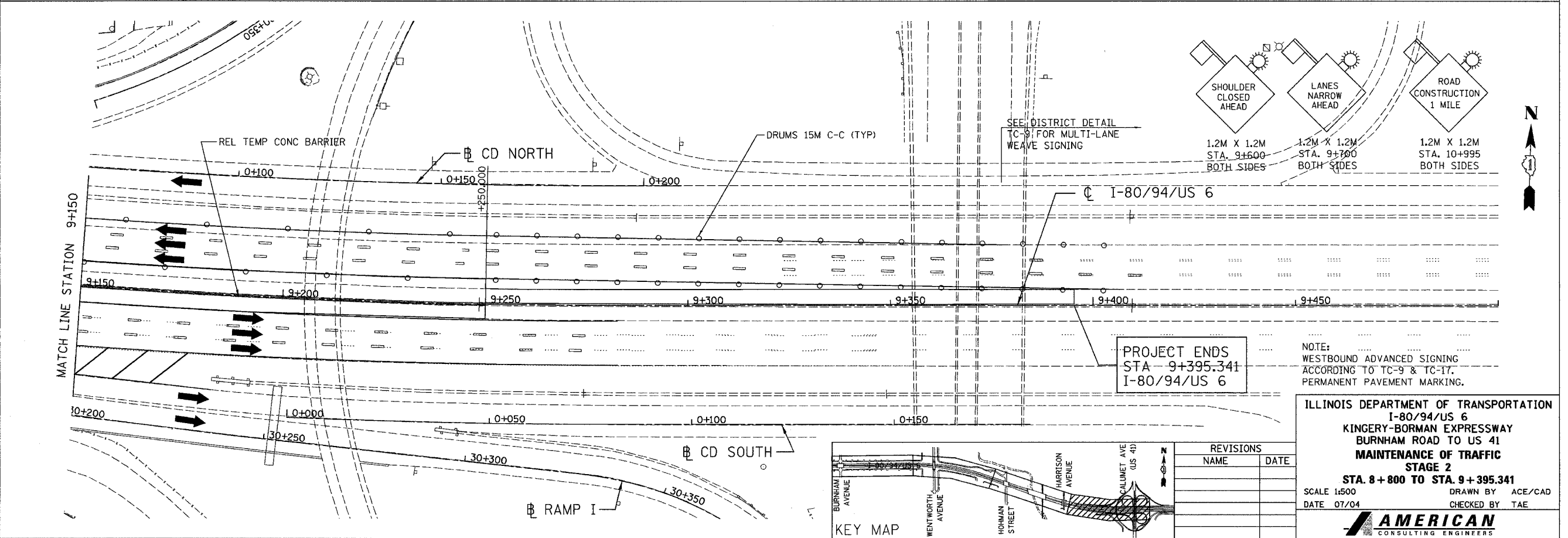


ALL DIMENSIONS IN METERS EXCEPT PAVE ITEMS AND UNLESS NOTED OTHERWISE

F.A.I. RTE.	SECTION	COUNTY	TOTAL SHEETS	SHEET NO.
80/94	2626.2-R-1	COOK	452	74
STA.	TO STA.			
FED. ROAD DIST. NO.	ILLINOIS FED. AID PROJECT			
CONTRACT NO. 62113	INDOT DES. NO. 0100987			

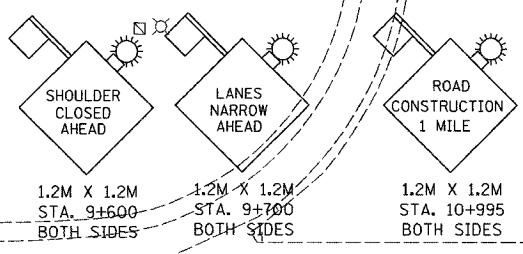


NOTE: PERMANENT PAVEMENT MARKING



PROJECT ENDS
STA 9+395.341
I-80/94/US 6

NOTE:
WESTBOUND ADVANCED SIGNING
ACCORDING TO TC-9 & TC-17.
PERMANENT PAVEMENT MARKING.



SEE DISTRICT DETAIL
TC-9 FOR MULTI-LANE
WEAVE SIGNING

PROJECT ENDS
STA 9+395.341
I-80/94/US 6

NOTE:
WESTBOUND ADVANCED SIGNING
ACCORDING TO TC-9 & TC-17.
PERMANENT PAVEMENT MARKING.

ILLINOIS DEPARTMENT OF TRANSPORTATION
I-80/94/US 6
KINGERY-BORMAN EXPRESSWAY
BURNHAM ROAD TO US 41
**MAINTENANCE OF TRAFFIC
STAGE 2**
STA. 8+800 TO STA. 9+395.341
SCALE 1:500 DRAWN BY ACE/CAD
DATE 07/04 CHECKED BY TAE

REVISIONS	
NAME	DATE

