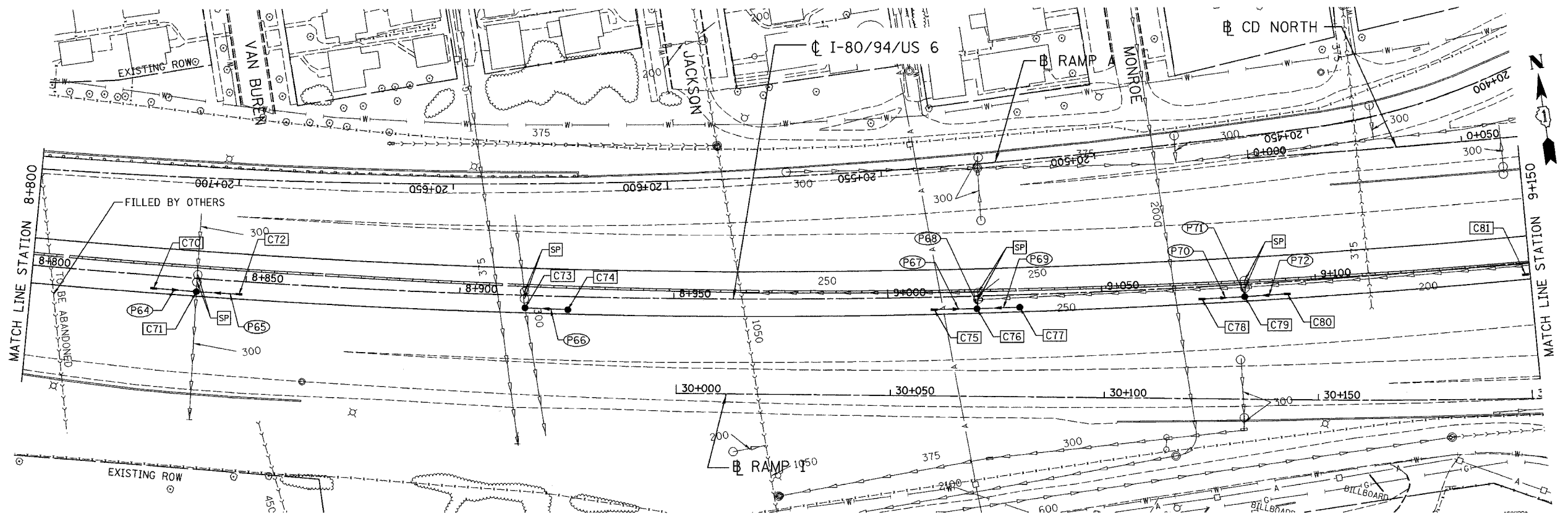


ALL DIMENSIONS IN METERS EXCEPT PAVEMENT ITEMS AND UNLESS NOTED OTHERWISE

F.A.I. RTE.	SECTION	COUNTY	TOTAL SHEETS	SHEET NO.
80/94	2626.2-R-1	COOK	452	94
STA.	TO STA.			
FED. ROAD DIST. NO.	ILLINOIS	FED. AID PROJECT		
CONTRACT NO. 62113	INDOT DES. NO. 0100987			



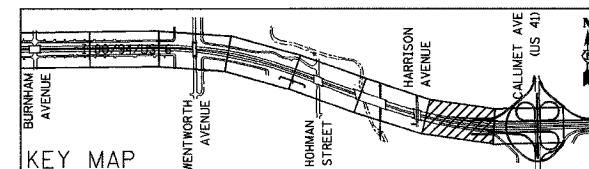
**LEGEND**

- [R] REMOVE CATCH BAS
- [A] MAN ADJUST OR CB ADJUST
- [SP] STL PLATE INST DR STR AND FR & GRATES REMOVED
- [REC] MAN RECONST
- [F] MAN FILL TO MAIN FLOW
- (XXX) PROPOSED PIPE
- [XXX] PROPOSED STRUCTURE

NOTE: ALL EXISTING PIPES AND UTILITIES TO REMAIN IN SERVICE UNLESS NOTED OTHERWISE.

ILLINOIS DEPARTMENT OF TRANSPORTATION  
 I-80/94/US 6  
 KINGERY-BORMAN EXPRESSWAY  
 BURNHAM ROAD TO US 41  
**EXISTING AND PROPOSED DRAINAGE PLAN**

STA. 8+800 TO STA. 9+150  
 SCALE 1:500 DRAWN BY ACE/CAD  
 DATE 07/04 CHECKED BY TAE



REVISIONS	
NAME	DATE