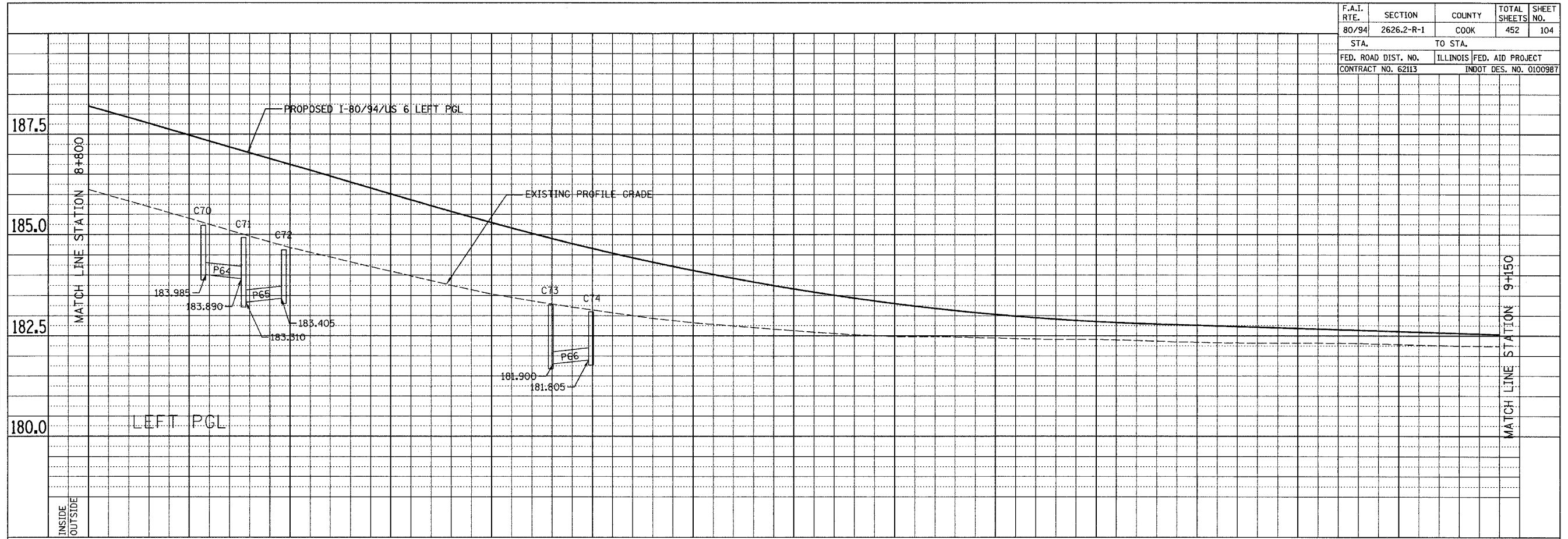
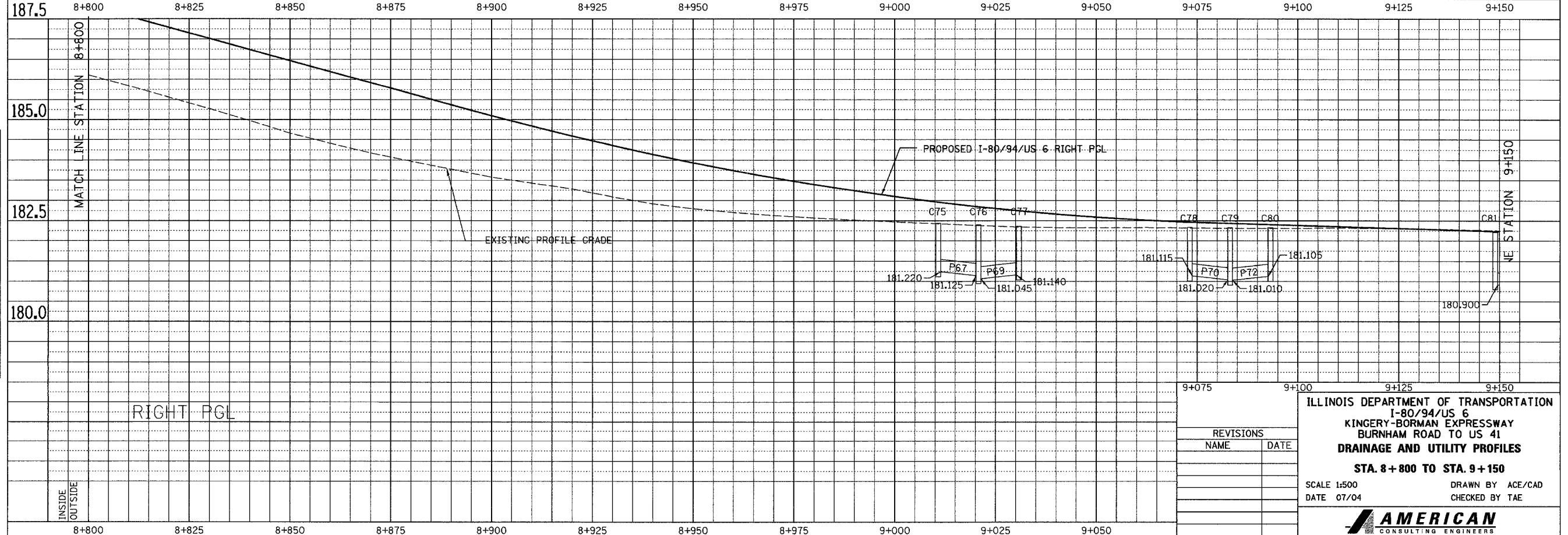


F.A.I. RTE.	SECTION	COUNTY	TOTAL SHEETS	SHEET NO.
80/94	2626.2-R-1	COOK	452	104
STA.	TO STA.			
FED. ROAD DIST. NO.	ILLINOIS	FED. AID PROJECT		
CONTRACT NO. 62113	INDOT DES. NO. 0100987			

FINAL SURVEY PLOTTED	BY	DATE
NOTE BOOK TEMPLATE AREAS CHECKED		
NO.		



ORIGINAL SURVEY PLOTTED	BY	DATE
NOTE BOOK TEMPLATE AREAS CHECKED		
NO.		



9+075	9+100	9+125	9+150
<b>ILLINOIS DEPARTMENT OF TRANSPORTATION</b> I-80/94/US 6 KINGERY-BORMAN EXPRESSWAY BURNHAM ROAD TO US 41 <b>DRAINAGE AND UTILITY PROFILES</b> <b>STA. 8 + 800 TO STA. 9 + 150</b>			
REVISIONS			
NAME	DATE		
		SCALE 1:500	
		DATE 07/04	
		DRAWN BY ACE/CAD	
		CHECKED BY TAE	