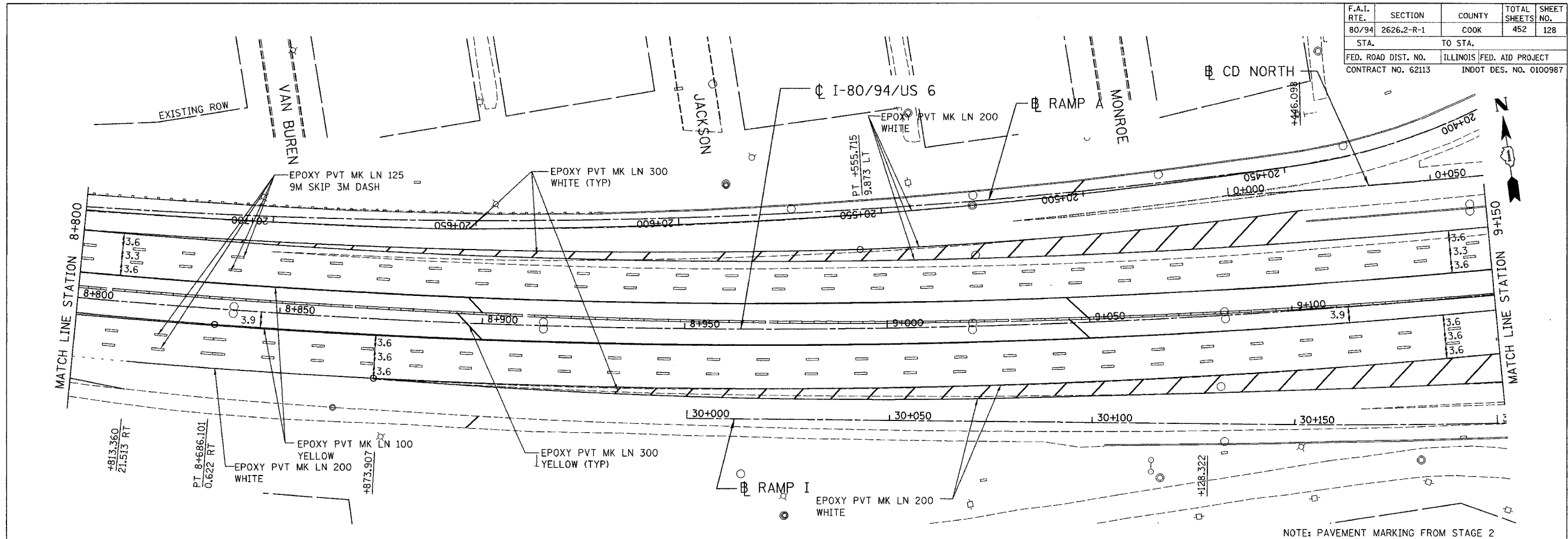
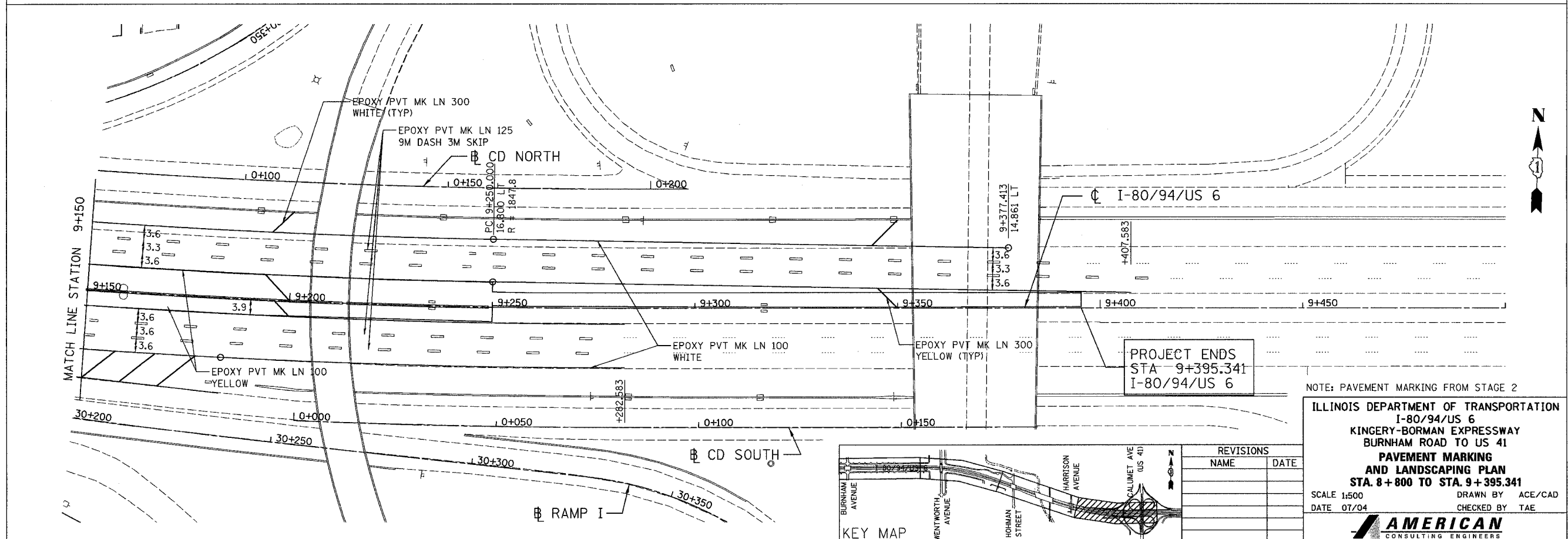


F.A.I. RTE.	SECTION	COUNTY	TOTAL SHEETS	SHEET NO.
80/94	2626.2-R-1	COOK	452	128
STA.	TO STA.			
FED. ROAD DIST. NO.	ILLINOIS	FED. AID PROJECT		
CONTRACT NO. 62113	INDOT DES. NO. 0100987			



NOTE: PAVEMENT MARKING FROM STAGE 2

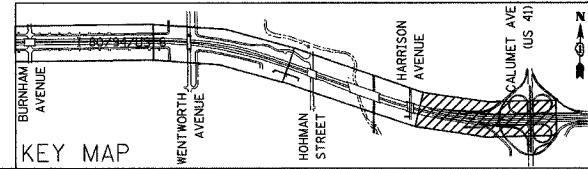


NOTE: PAVEMENT MARKING FROM STAGE 2

PROJECT ENDS
STA 9+395.341
I-80/94/US 6

ILLINOIS DEPARTMENT OF TRANSPORTATION
I-80/94/US 6
KINGERY-BORMAN EXPRESSWAY
BURNHAM ROAD TO US 41
**PAVEMENT MARKING
AND LANDSCAPING PLAN**
STA. 8+800 TO STA. 9+395.341

SCALE 1:500 DRAWN BY ACE/CAD
DATE 07/04 CHECKED BY TAE



REVISIONS	
NAME	DATE