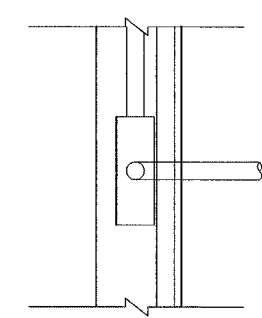
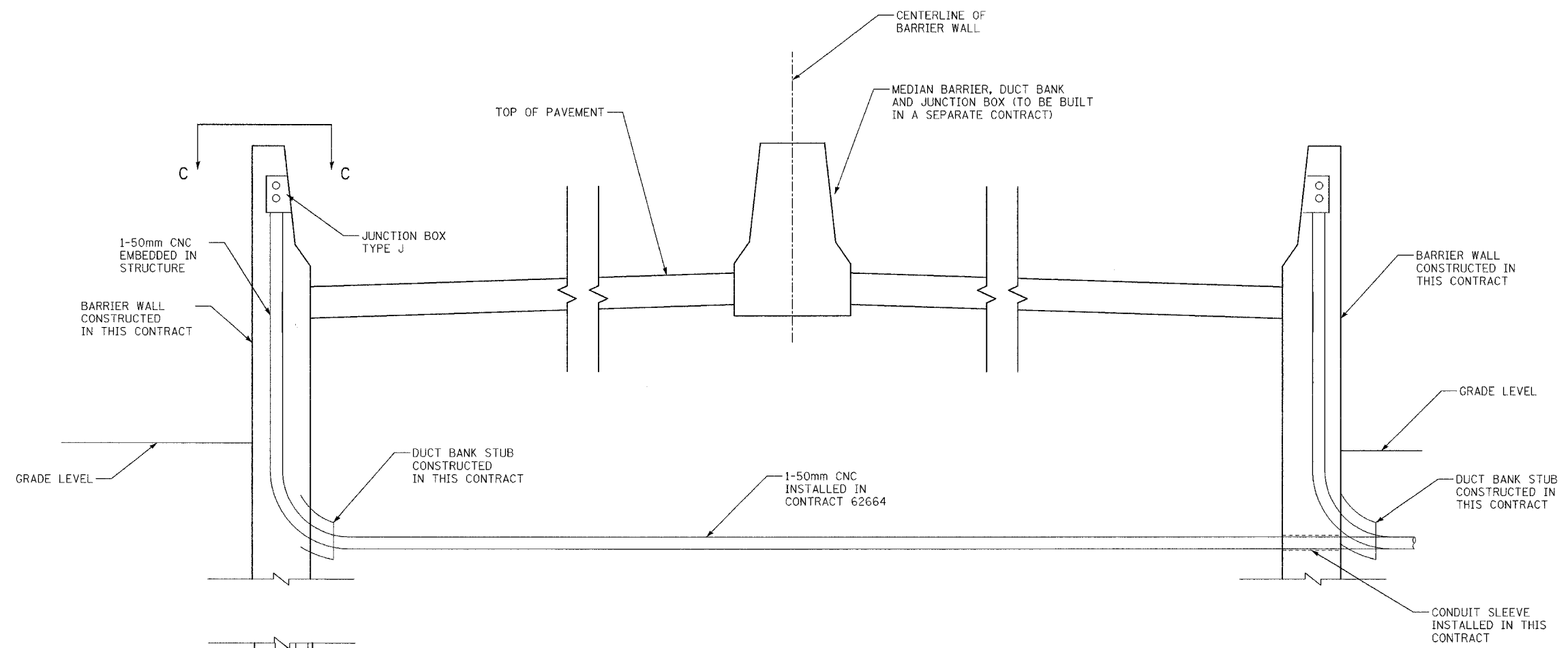


ALL DIMENSIONS IN METERS EXCEPT PAY ITEMS AND UNLESS NOTED OTHERWISE.

F.A.I. RTE.	SECTION	COUNTY	TOTAL SHEETS	SHEET NO.
80/94	2626.2-R-1	COOK	452	141
STA.	TO STA.			
FED. ROAD DIST. NO.	ILLINOIS	FED. AID PROJECT		
CONTRACT #62113				



SECTION C-C

DETAIL 2  
I-80, STATION 7+860 N.T.S.  
ELEVATION VIEW FROM EAST

NOTES:

1. FOR PLAN VIEW, SEE SHEET 9 OF 11.
2. MEDIAN BARRIER WALL AND DUCT BANK IN MEDIAN BARRIER WALL FOUNDATION CONSTRUCTED BY OTHERS. CONDUITS IN DUCT BANKS UNDER PAVEMENT OR IN TRENCH CONSTRUCTED IN CONTRACT 62664. JUNCTION BOXES AND CONDUITS IN RETAINING WALLS CONSTRUCTED IN THIS CONTRACT.

REVISIONS	
NAME	DATE

ILLINOIS DEPARTMENT OF TRANSPORTATION  
I-80/94/US 6  
KINGERY-BORMAN EXPRESSWAY  
BURNHAM ROAD TO US 41  
**STATE LINE CONDUIT**  
**ELEVATION VIEW**  
**STA. 7+850**

SCALE N.T.S.      DRAWN BY JRH/MAP  
DATE 07/04      CHECKED BY DEM/CMW

