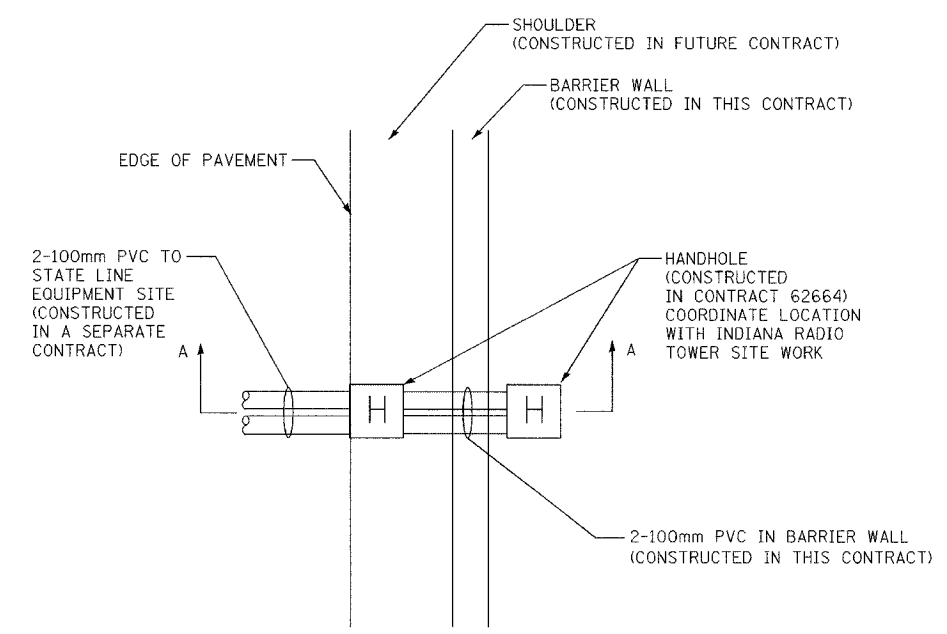
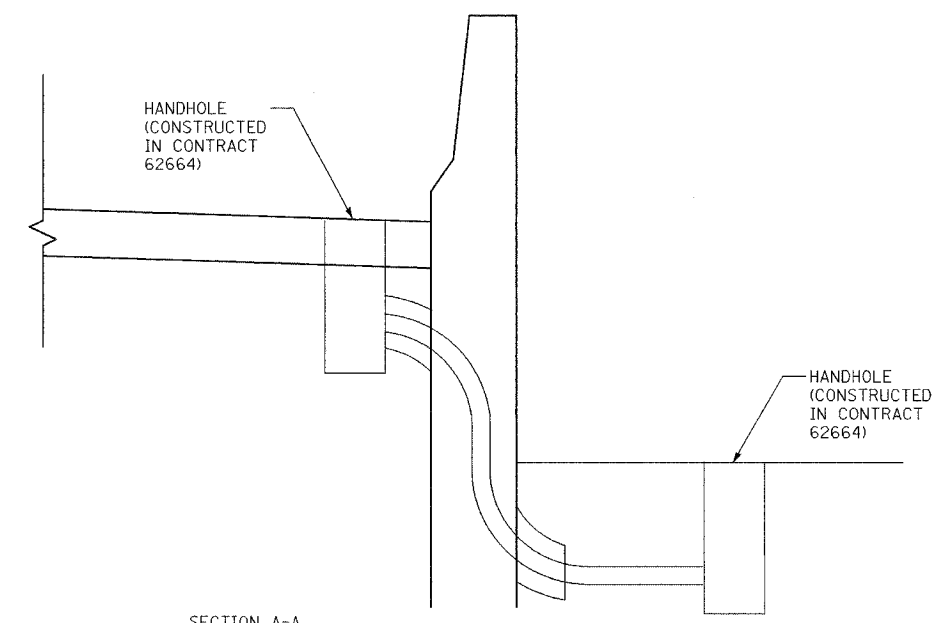


ALL DIMENSIONS IN METERS EXCEPT PAY ITEMS AND UNLESS NOTED OTHERWISE.

F.A.I. RTE.	SECTION	COUNTY	TOTAL SHEETS	SHEET NO.
80/94	2626.2-R-1	COOK	452	143
STA.	TO STA.			
FED. ROAD DIST. NO.	ILLINOIS	FED. AID PROJECT		
CONTRACT #62113				



DETAIL 4
 PLAN VIEW
 I-80, STATION 7+960
 N.T.S



SECTION A-A
 N.T.S

NOTES:

- HANDHOLES AND CONDUITS IN DUCT BANKS UNDER PAVEMENT OR IN TRENCH CONSTRUCTED IN CONTRACT 62664. CONDUITS IN BARRIER WALL CONSTRUCTED IN THIS CONTRACT.
- DETAIL 5 IS NOT USED.



REVISIONS	
NAME	DATE

ILLINOIS DEPARTMENT OF TRANSPORTATION
 I-80/94/US 6
 KINGERY-BORMAN EXPRESSWAY
 BURNHAM ROAD TO US 41
**MISCELLANEOUS ELECTRICAL
 INSTALLATION DETAILS**
SHEET 1
 SCALE N.T.S
 DATE 07/04
 DRAWN BY JRH/MAP
 CHECKED BY DEM/CMW