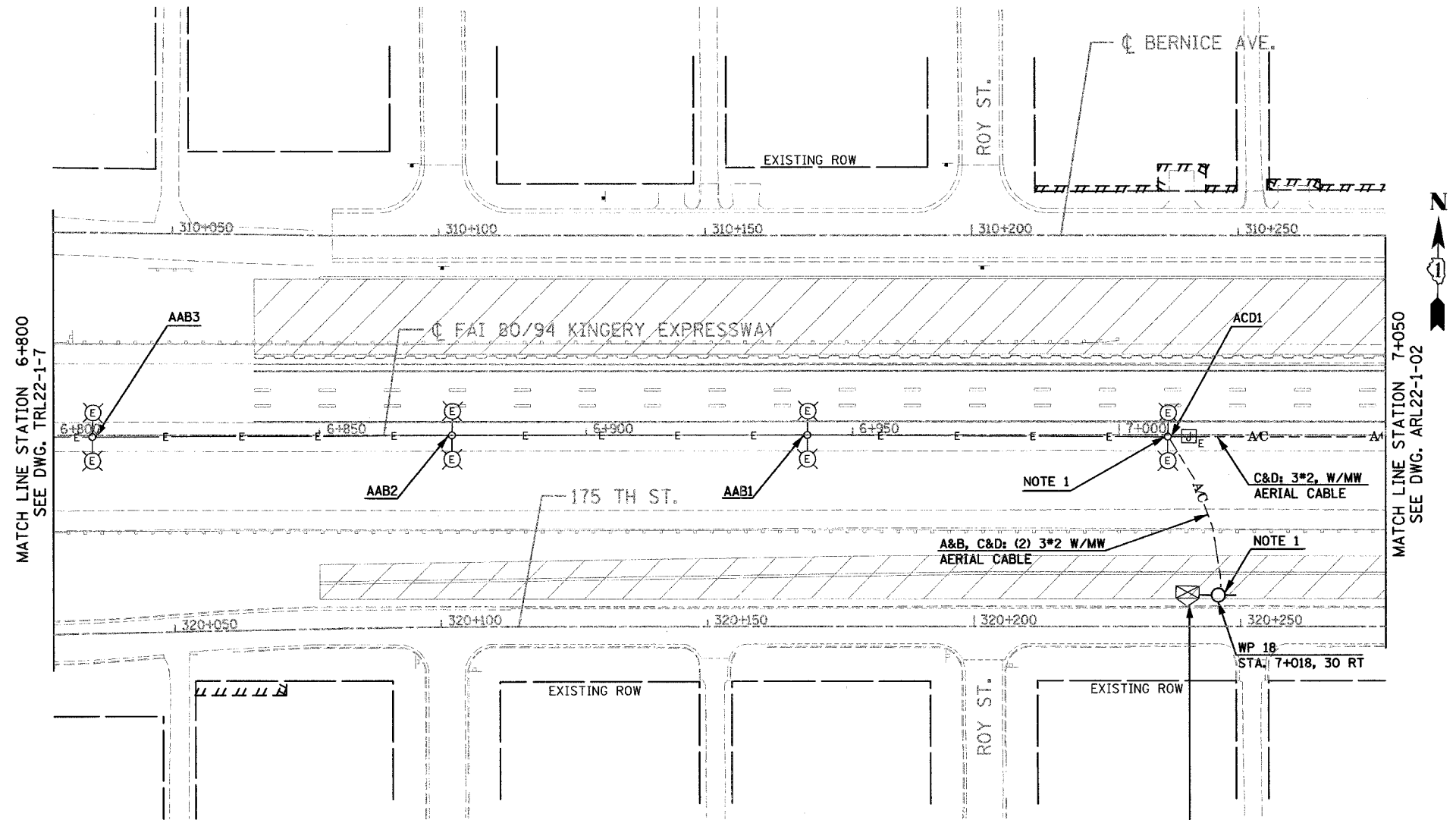


F.A.I. RTE.	SECTION	COUNTY	TOTAL SHEETS	SHEET NO.
80/94	2626.I-R-1	COOK	452	144c
STA.		TO STA.		
FED. ROAD DIST. NO.		ILLINOIS FED. AID PROJECT		
CONTRACT # 62113		INDOT Des. No. 0100987		



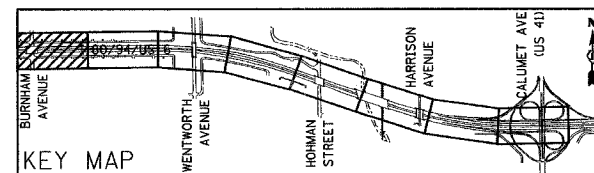
MATCH LINE STATION 6+800  
SEE DWG. TRL22-1-7

MATCH LINE STATION 7+050  
SEE DWG. ARL22-1-02

EXISTING LIGHTING CONTROLLER "A" 240/480V, 1Ø, 3 WIRE TO BE MAINTAINED UNDER THIS CONTRACT FOR TEMPORARY LIGHTING ON EAST AND WEST SIDE OF BURNHAM AVENUE. INSTALL AERIAL CABLE BETWEEN EXISTING CONTROLLER AND EXISTING LIGHT POLE "ACD1" AS SHOWN IN THE PLAN AND AS DIRECTED BY THE ENGINEER. THIS WORK SHALL BE DONE PRIOR TO CONSTRUCTION OF RETAINING WALL IN FRONT OF THE EXISTING CONTROLLER.

NOTE 1. SEE DETAIL AT DRAWING NO. ADL22-01 FOR TEMPORARY AERIAL CABLE CONNECTION TO EXISTING LIGHT POLE.

FOR REFERENCE ONLY-EXISTING CONDITIONS 18 FEB 2005



REVISIONS	
NAME	DATE
New Sheet	10/1/04

ARL22-1-01

ILLINOIS DEPARTMENT OF TRANSPORTATION  
I-80/94/US 6  
KINGERY-BORMAN EXPRESSWAY  
BURNHAM ROAD TO US 41  
INTERIM LIGHTING 1 PLAN  
I-80 /94 /US-6  
STA. 6+800 TO STA. 7+050  
SCALE 1:500 DRAWN BY EAO/BC  
DATE 12/17/03 CHECKED BY PKG/BC

**99** GANDHI AND ASSOCIATES, INC.  
ENGINEERS AND PLANNERS  
505 S. WESTWICH HIGHWAY  
SUITE 300  
DECATUR, ILLINOIS 60633 TEL: 617/974-590