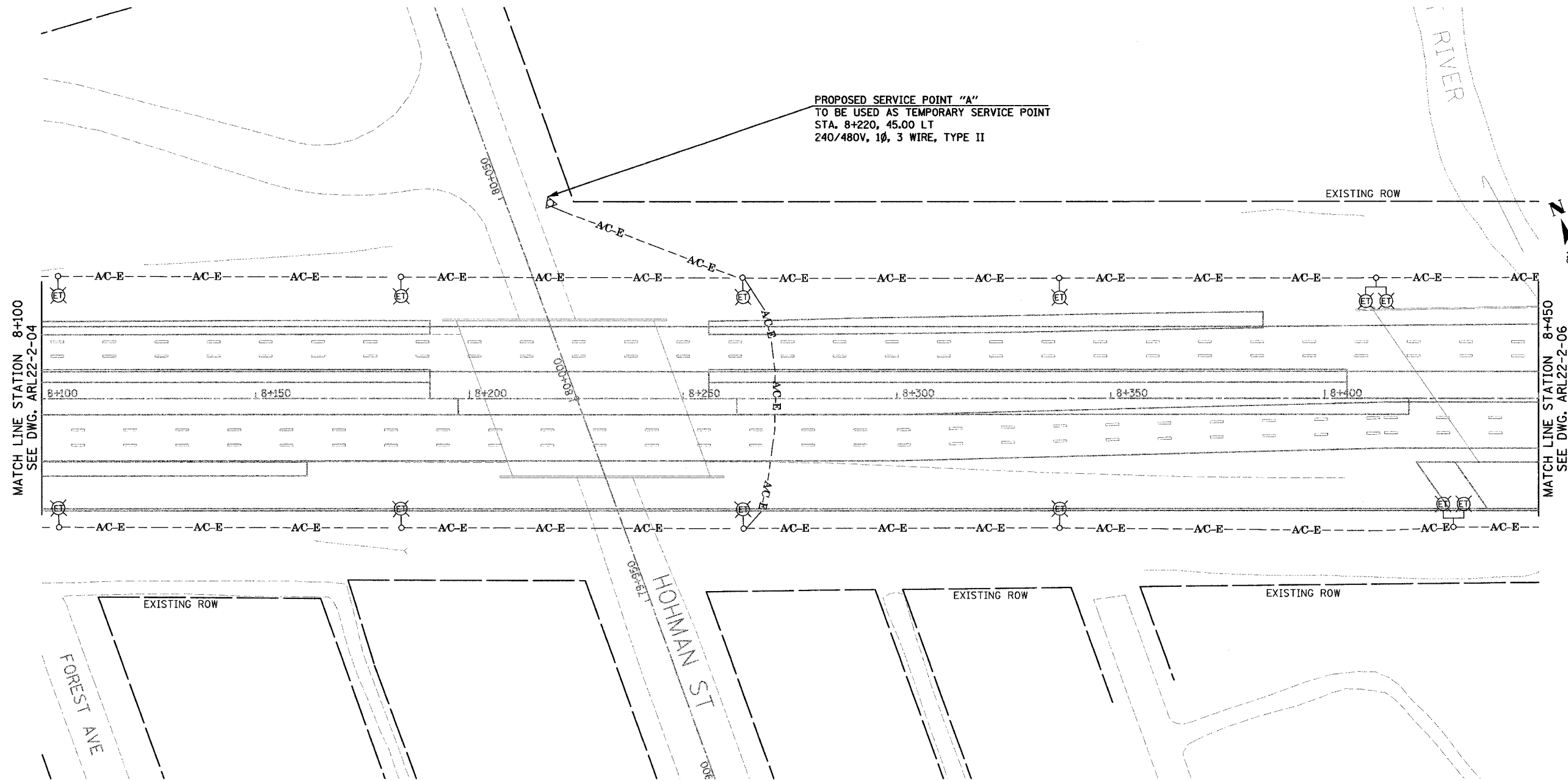


F.A.I. RTE.	SECTION	COUNTY	TOTAL SHEETS	SHEET NO.
80/94	2626.1-R-1	COOK	452	144m
STA.		TO STA.		
FED. ROAD DIST. NO.		ILLINOIS FED. AID PROJECT		
CONTRACT # 62113		INDOT Des. No. 0100987		

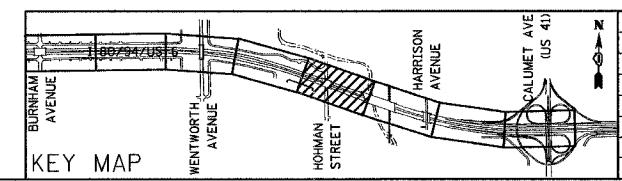


PROPOSED SERVICE POINT "A"  
 TO BE USED AS TEMPORARY SERVICE POINT  
 STA. 8+220, 45.00 LT  
 240/480V, 1Ø, 3 WIRE, TYPE II

MATCH LINE STATION 8+100  
 SEE DWG. ARL22-2-04

MATCH LINE STATION 8+450  
 SEE DWG. ARL22-2-06

FOR REFERENCE ONLY-PROPOSED CONDITIONS 30 SEP 2005



REVISIONS	
NAME	DATE
New Sheet	10/1/04

ARL22-2-05

ILLINOIS DEPARTMENT OF TRANSPORTATION  
 I-80/94/US 6  
 KINGERY-BORMAN EXPRESSWAY  
 BURNHAM ROAD TO US 41  
 INTERIM LIGHTING 2 PLAN  
 I-80/94/US-6  
 STA. 8+100 TO STA. 8+450

SCALE 1:500 DRAWN BY EA0/BC  
 DATE 12/17/03 CHECKED BY PKG/BC

**GO** GANDHI AND ASSOCIATES, INC.  
 ENGINEERS AND PLANNERS  
 5015 N. WENTWORTH HIGHWAY  
 SUITE 300  
 CHICAGO, ILLINOIS 60631 TEL: 773/774-9300

J:\projects\projects\2626.1-R-1\PL22.04.plt\c:\users\j\22095\source  
 30 SEP 2004 17:59:54