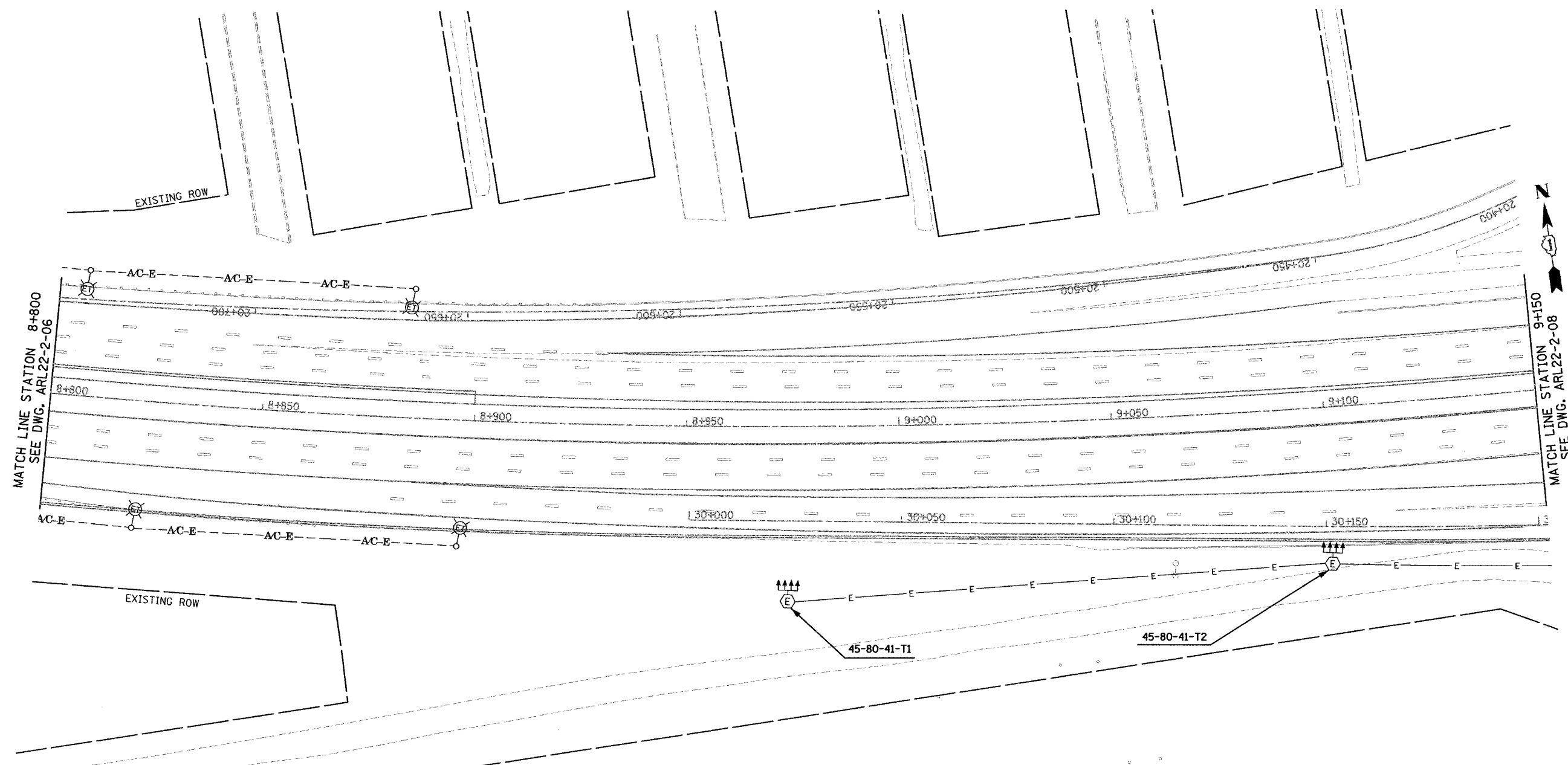


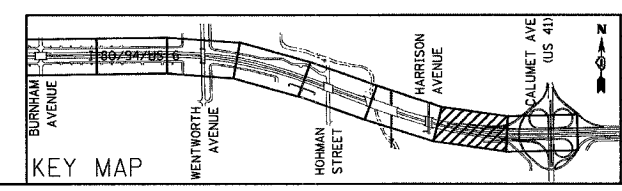
F.A.I. RTE.	SECTION	COUNTY	TOTAL SHEETS	SHEET NO.
80/94	2626.1-R-1	COOK	452	144a
STA.		TO STA.		
FED. ROAD DIST. NO.		ILLINOIS FED. AID PROJECT		
CONTRACT # 62113		INDOT Des. No. 0100987		



MATCH LINE STATION 8+800  
SEE DWG. ARL22-2-06

MATCH LINE STATION 9+150  
SEE DWG. ARL22-2-08

FOR REFERENCE ONLY-PROPOSED CONDITIONS 30 SEP 2005



REVISIONS	
NAME	DATE
△ New Sheet	10/1/04

ARL22- 2-07

ILLINOIS DEPARTMENT OF TRANSPORTATION  
I-80/94/US 6  
KINGERY-BORMAN EXPRESSWAY  
BURNHAM ROAD TO US 41  
INTERIM LIGHTING 2 PLAN  
I-80 /94 /US-6  
STA. 8 + 800 TO STA. 9 + 150

SCALE 1:500  
DATE 12/17/03

DRAWN BY EAO/BC  
CHECKED BY PKG/BC

GANDHI AND ASSOCIATES, INC.  
ENGINEERS AND PLANNERS  
800 N. NORTHWEST CORNER  
SUITE 204  
CHICAGO, ILLINOIS 60610 TEL: (773) 714-2900