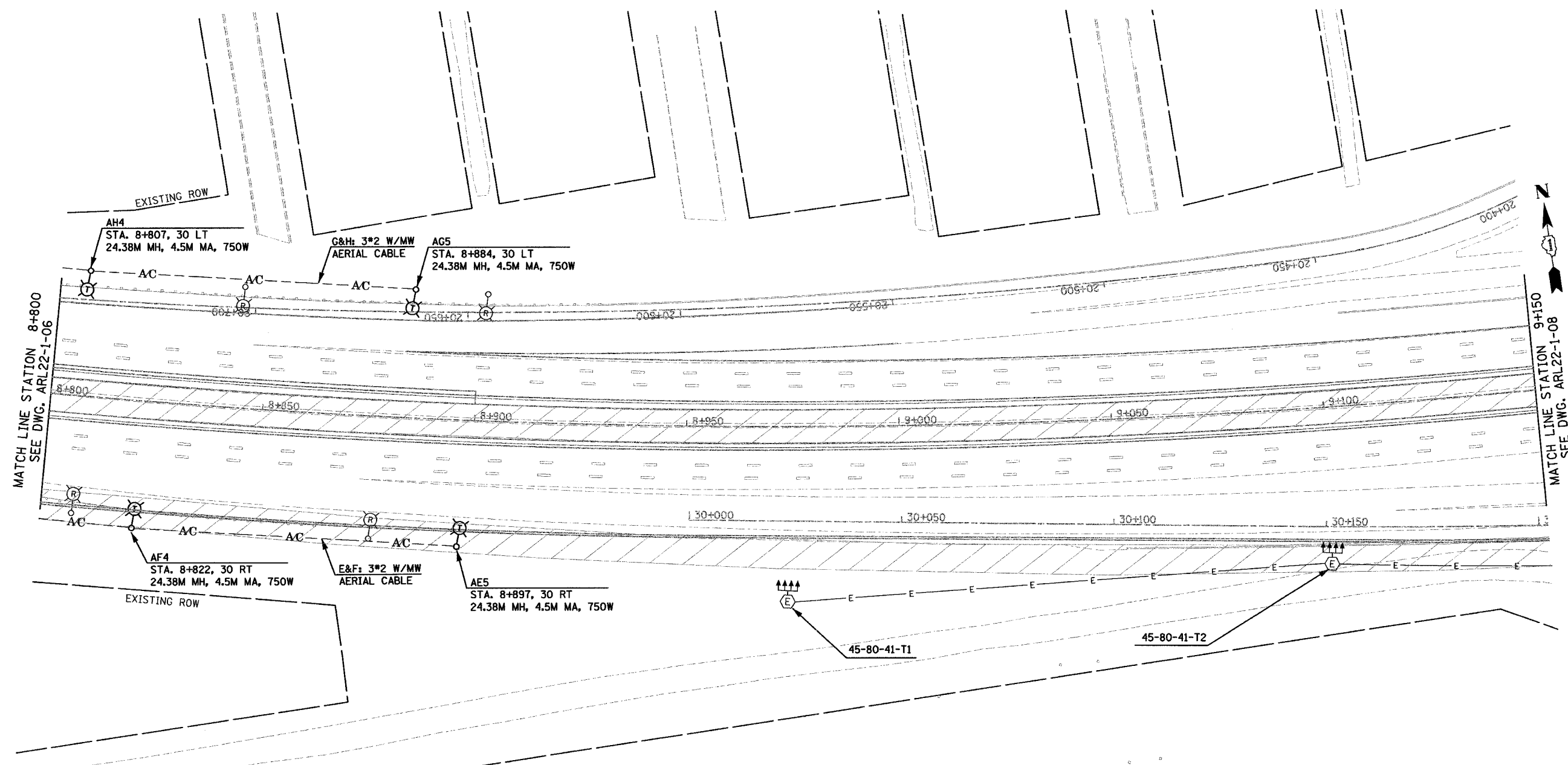


F.A.I. RTE.	SECTION	COUNTY	TOTAL SHEETS	SHEET NO.
80/94	2626.1-R-1	COOK	452	144g
STA.		TO STA.		
FED. ROAD DIST. NO.		ILLINOIS FED. AID PROJECT		
CONTRACT # 62113		INDOT Des. No. 0100987		

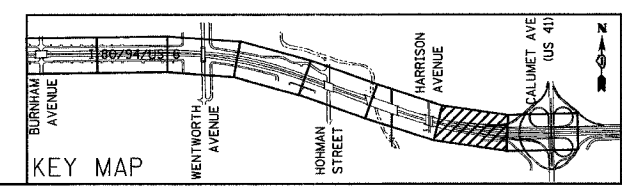


MATCH LINE STATION 8+800  
SEE DWG. ARL22-1-06

MATCH LINE STATION 9+150  
SEE DWG. ARL22-1-08

**NOTE:**  
ALL TEMPORARY LIGHTING POLES IN INDIANA ARE 30.48M WOOD POLES UNLESS OTHERWISE NOTED.

**FOR REFERENCE ONLY-EXISTING CONDITIONS 18 FEB 2005**



REVISIONS	
NAME	DATE
New Sheet	10/1/04

**ARL22- 1-07**

**ILLINOIS DEPARTMENT OF TRANSPORTATION**  
I-80/94/US 6  
KINGERY-BORMAN EXPRESSWAY  
BURNHAM ROAD TO US 41  
INTERIM LIGHTING 1 PLAN  
I-80 /94 /US-6  
STA. 8 + 800 TO STA. 9 + 150

SCALE 1:500      DRAWN BY EA0/BC  
DATE 12/17/03      CHECKED BY PKG/BC

**GO** GANDHI AND ASSOCIATES, INC.  
ENGINEERS AND PLANNERS  
100 N. NORTHWEST HIGHWAY  
SUITE 300  
CHICAGO, ILLINOIS 60632 TEL: 773/714-5900