

ROUTE NO.	SECTION	COUNTY	SHEETS	SHEET	SHEET NO. S-2
I-80/94	2626.2-R-1	COOK	452	147	20 SHEETS
DESIGNED	DRAWN	CHECKED	CHECKED	PREPARED	PROJECT

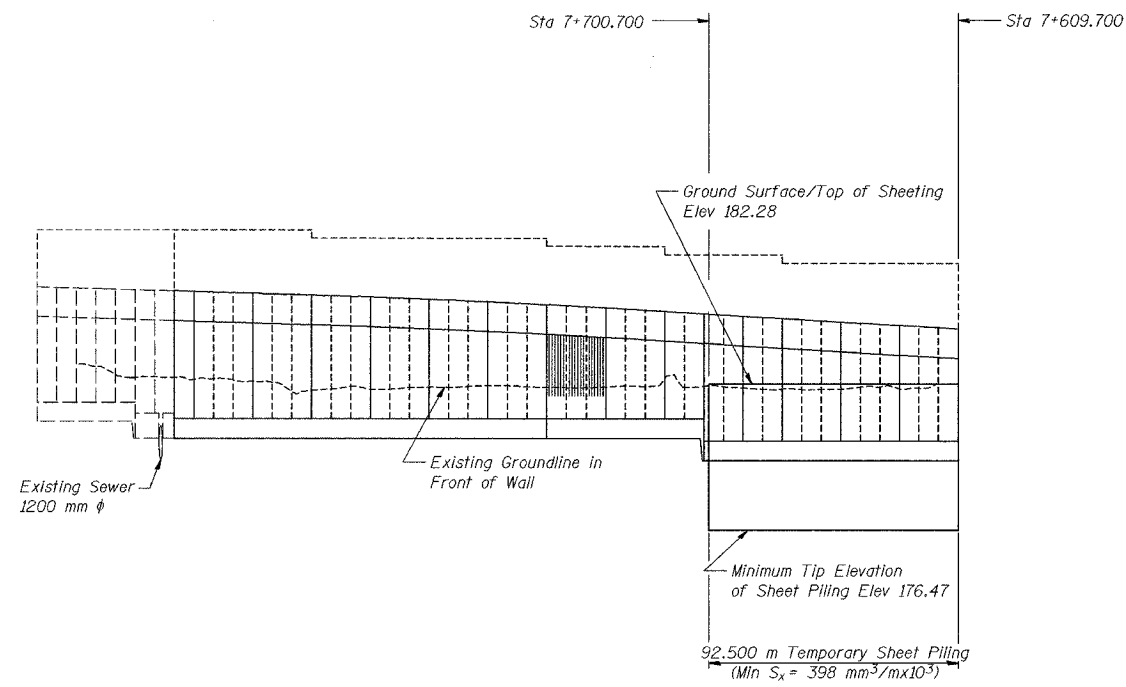
CONTRACT NO. 62113 INDOT DES. NO. 0100987

GENERAL NOTES

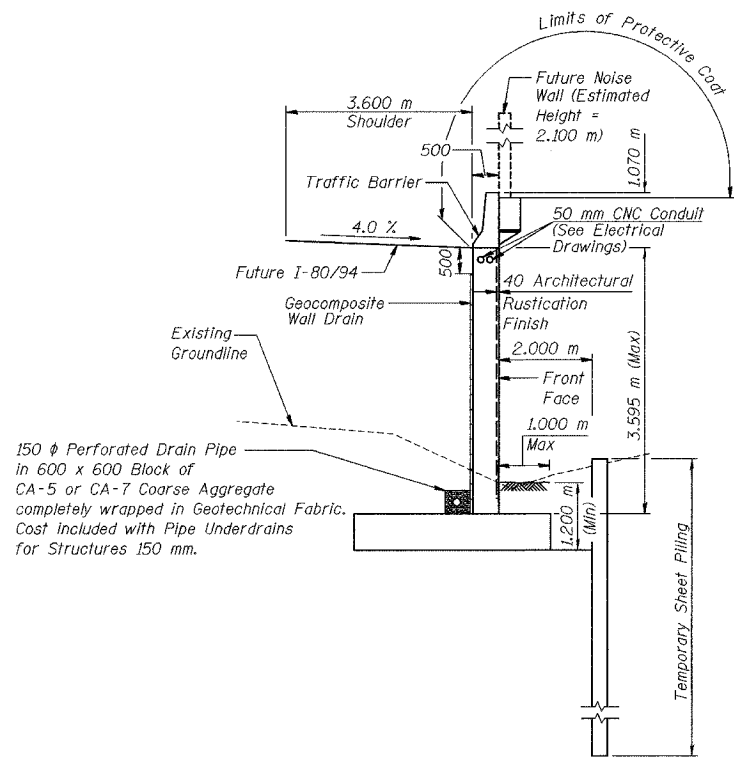
1. Reinforcement bars shall conform to the requirements of AASHTO M 31M or M322M Grade 400.
2. All dimensions are in millimeters (mm) except as noted.
3. If the Contractor chooses to alter the temporary cantilevered sheet piling design requirements shown on the plans, a design submittal including plan details and calculations will be required for review and acceptance by the Engineer.
4. All construction joints shall be bonded.

INDEX OF SHEETS

SHEET NO.	TITLE
S-1	General Plan
S-2	Index of Sheets, General Notes and Total Bill of Material
*S-3	Plan and Elevation (1 of 13)
*S-4	Plan and Elevation (2 of 13)
S-5	Plan and Elevation (3 of 13)
S-6	Plan and Elevation (4 of 13)
S-7	Plan and Elevation (5 of 13)
S-8	Plan and Elevation (6 of 13)
S-9	Plan and Elevation (7 of 13)
S-10	Plan and Elevation (8 of 13)
S-11	Plan and Elevation (9 of 13)
S-12	Plan and Elevation (10 of 13)
S-13	Plan and Elevation (11 of 13)
S-14	Plan and Elevation (12 of 13)
S-15	Plan and Elevation (13 of 13)
S-16	Wall Sections and Details
S-17	Rustication Finish Details
S-18	Boring Logs (1 of 3)
S-19	Boring Logs (2 of 3)
S-20	Boring Logs (3 of 3)



TEMPORARY SHEET PILING - ELEVATION



TYPICAL SECTION

TOTAL BILL OF MATERIAL

ITEM	UNIT	QUANTITY
Structure Excavation	m ³	4,139
Concrete Structures	m ³	1,547.6
Rustication Finish	m ²	753
Protective Coat	m ²	470
Reinforcement Bars, Epoxy Coated	kg	102,730
Temporary Sheet Piling	m ²	538
Geocomposite Wall Drain	m ²	782
Pipe Underdrains for Structures 150 mm	m	296.5
Noise Abatement Wall Anchor Rod Assembly	Each	82

DESIGNED	MJW
CHECKED	KFA
DRAWN	MJB
CHECKED	GSP

*** FOR INFORMATION ONLY**

ILLINOIS DEPARTMENT OF TRANSPORTATION
 I-80/94/US 6
 KINGERY-BORMAN EXPRESSWAY
 BURNHAM ROAD TO US 41
**INDEX OF SHEETS, GENERAL NOTES
 AND TOTAL BILL OF MATERIAL**
 SECTION 2626.2-R-1
 COOK COUNTY
 STATION 7+609.549 TO STATION 7+893.827
 STRUCTURE NO. 016-W856
 DATE 07/04
AMERICAN
 CONSULTING ENGINEERS