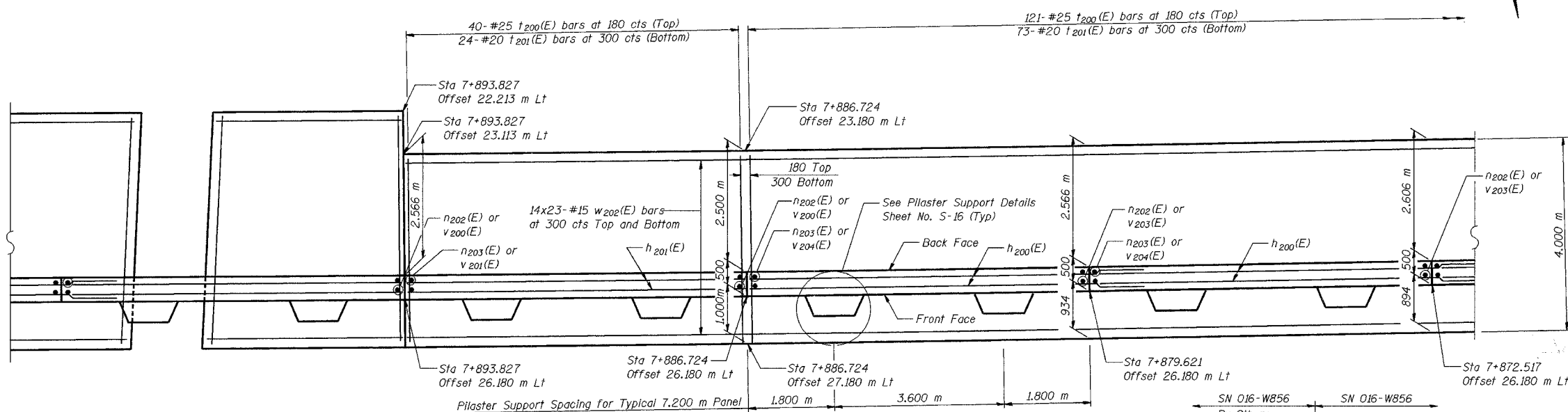
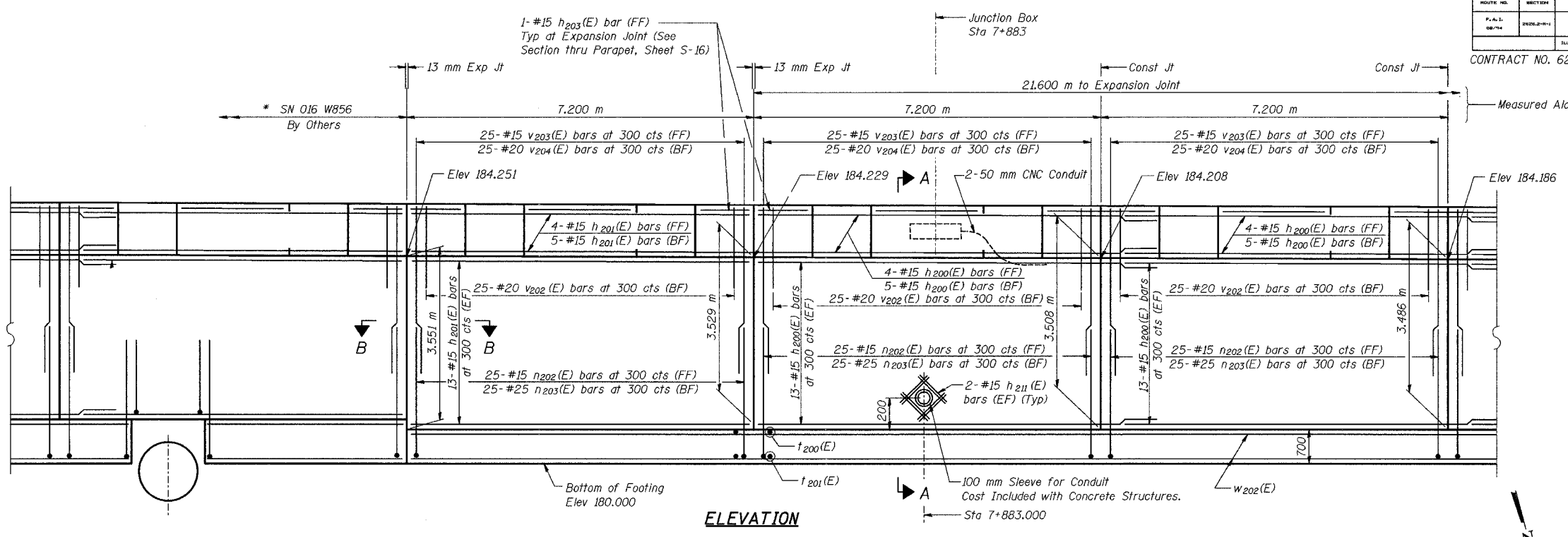


ROUTE NO.	SECTION	COUNTY	SHEET NO.	SHEET TOTAL	SHEET NO.
1-80/94	2626.2-R-1	COOK	452	149	20 SHEETS
CONTRACT NO. 62113 INDOT DES. NO. 0100987					



MINIMUM BAR LAPS
 #15 bars = 640
 #20 bars = 790

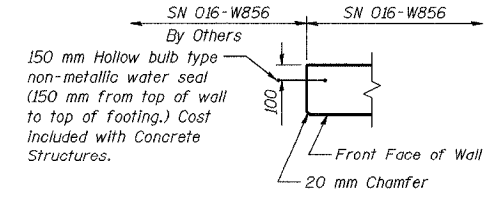
LEGEND
 BF = Back Face
 FF = Front Face
 EF = Each Face

NOTES:
 See Sheet S-16 for Section A-A, Expansion Joint Detail, and Bill of Material.
 See Sheet S-17 for Rustication details.
 Stations are referenced to $\text{C} 1-80/94$.
 Reinforcement bars designated (E) shall be epoxy coated.
 All dimensions are in millimeters (mm) except as noted.

DESIGNED	MJW
CHECKED	KFA
DRAWN	MJB
CHECKED	GSP

Bars indicated thus 20 x 3-#15 etc. indicates 20 lines of bars with 3 lengths per line.
 See Electrical Drawings for Junction Box and Conduit Details.

FOOTING PLAN



SECTION B-B

*** FOR INFORMATION ONLY**

ILLINOIS DEPARTMENT OF TRANSPORTATION
 1-80/94/US 6
 KINCERY-BORIAN EXPRESSWAY
 BURNHAM ROAD TO US 41
PLAN AND ELEVATION (3 OF 13)
SECTION 2626.2-R-1
COOK COUNTY
STATION 7+609.549 TO STATION 7+893.827
STRUCTURE NO. 016-W856
 DATE 07/04
AMERICAN
 CONSULTING ENGINEERS