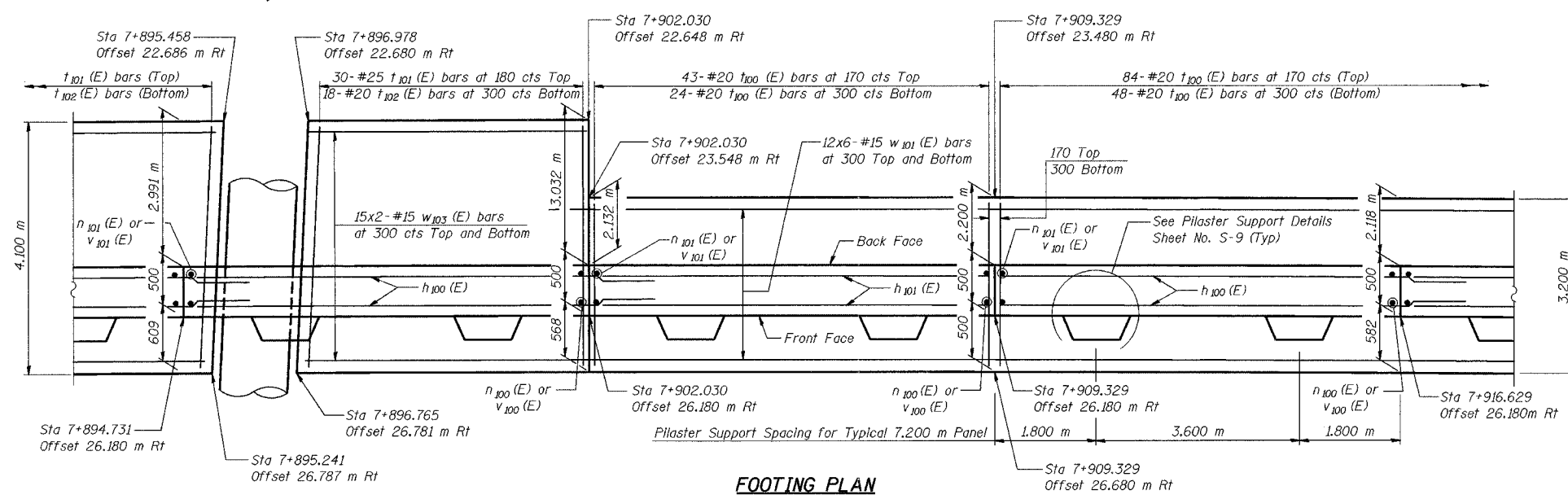
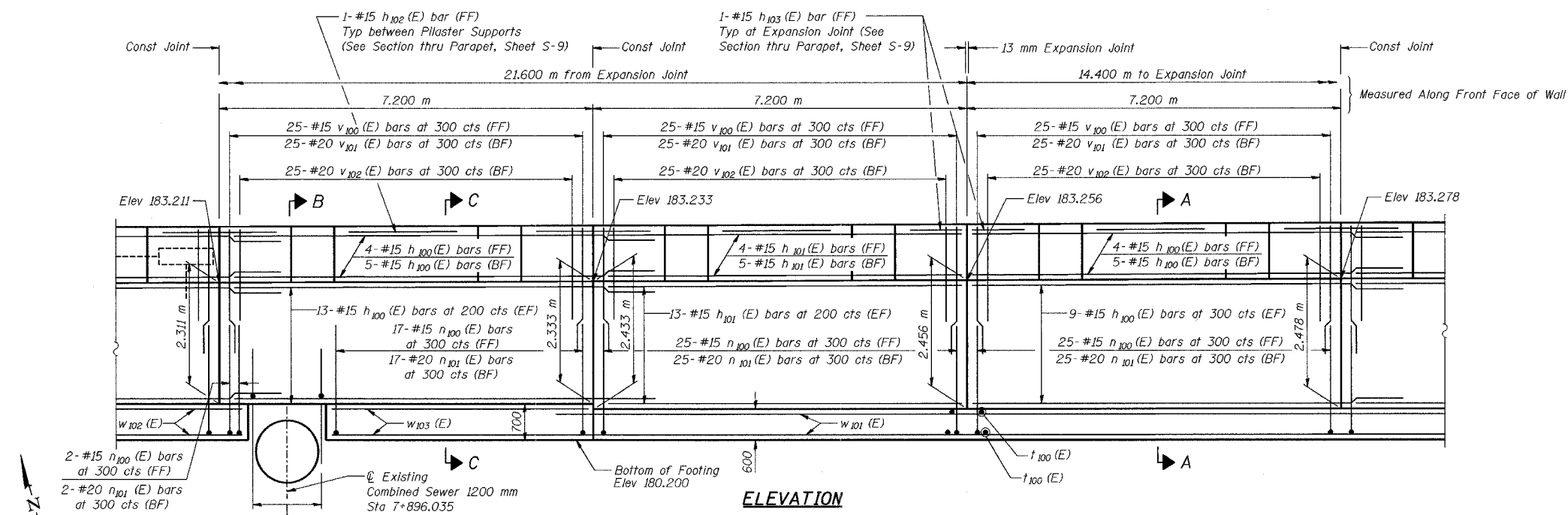


ROUTE NO.	SECTION	COUNTY	TOTAL SHEETS	SHEET
F.A.L. 06-74	2626.2-R-1	COOK	452	170
SHEET NO. S-6		12 SHEETS		
CONTRACT NO. 62113		INDOT DES. NO. 0100987		



**NOTES:**

See Sheet S-9 for Section A-A, Section B-B, Section C-C, Expansion Joint Detail, and Bill of Material.

See Sheet S-10 for Rustication details.

Stations are referenced to  $\odot$  I-80/94.

Reinforcement bars designated (E) shall be epoxy coated.

All dimensions are in millimeters (mm) except as noted.

Bars indicated thus 20 x 3-#15 etc. indicates 20 lines of bars with 3 lengths per line.

DESIGNED	MJW
CHECKED	KFA
DRAWN	MJB
CHECKED	GSP

**MINIMUM BAR LAPS**

#15 bars = 640

#20 bars = 790

**LEGEND**

BF = Back Face

FF = Front Face

EF = Each Face

ILLINOIS DEPARTMENT OF TRANSPORTATION  
I-80/94/US 6  
KINGERY-BORMAN EXPRESSWAY  
BURNHAM ROAD TO US 41

**PLAN AND ELEVATION (4 OF 6)**  
**SECTION 2626.2-R-1**  
**COOK COUNTY**  
**STATION 7+821.737 TO STATION 7+960.424**  
**STRUCTURE NO. 016-W855**  
DATE 07/04

**AMERICAN**  
CONSULTING ENGINEERS