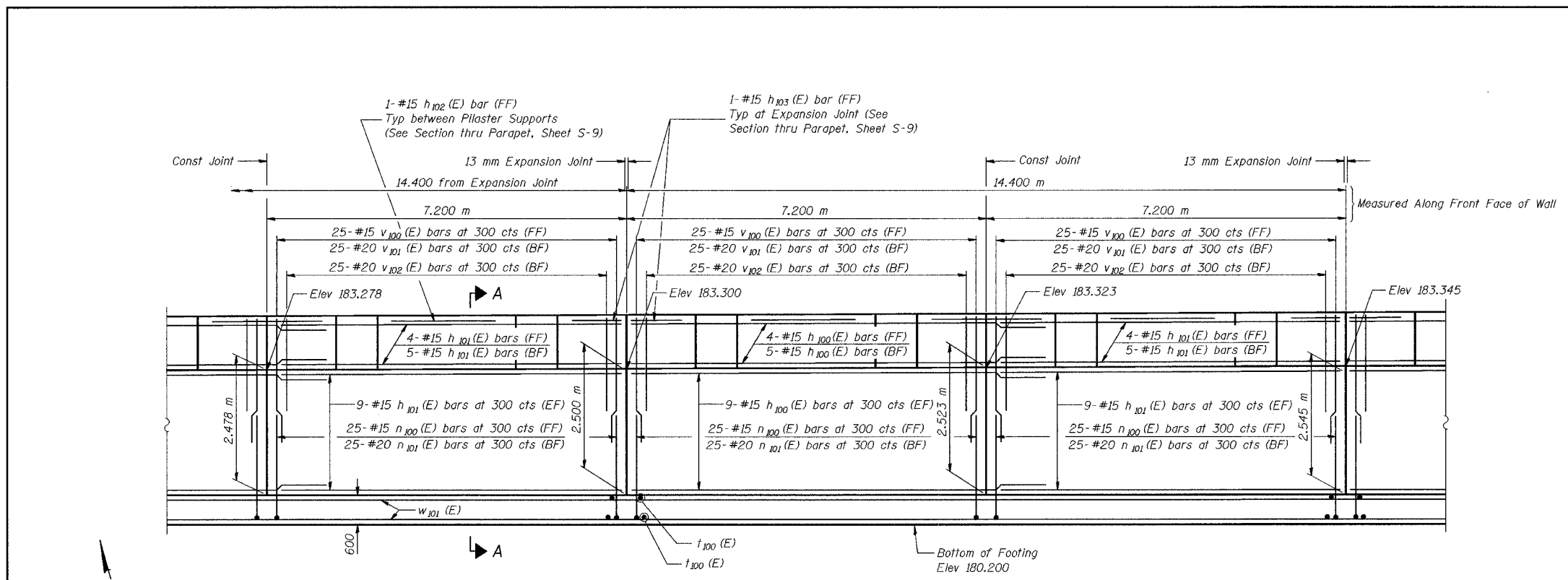
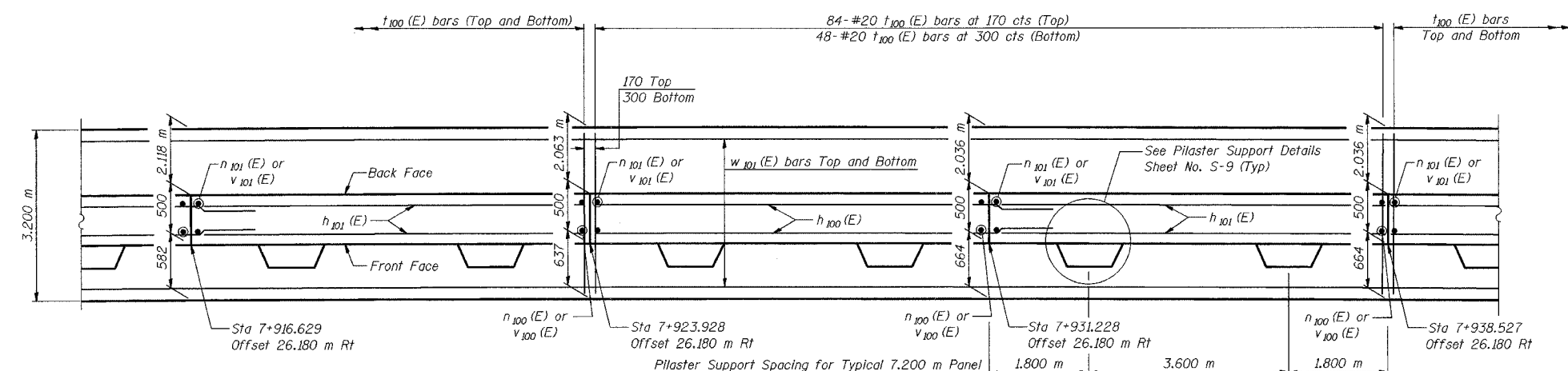


ROUTE NO.	SECTION	COUNTY	SHEET NO.	SHEET TOTAL
I-80/94	2626.2-R-1	COOK	452	171
CONTRACT NO. 62113 INDOT DES. NO. 0100987				

SHEET NO. S-7
12 SHEETS



ELEVATION



FOOTING PLAN

DESIGNED	MJW
CHECKED	KFA
DRAWN	MJB
CHECKED	GSP

MINIMUM BAR LAPS

#15 bars = 640
#20 bars = 790

LEGEND

BF = Back Face
FF = Front Face
EF = Each Face

NOTES:

See Sheet S-9 for Section A-A, Expansion Joint Detail, and Bill of Material.
See Sheet S-10 for Rustication details.
Stations are referenced to I-80/94.
Reinforcement bars designated (E) shall be epoxy coated.
All dimensions are in millimeters (mm) except as noted.

ILLINOIS DEPARTMENT OF TRANSPORTATION
I-80/94/US 6
KINGERY-BORMAN EXPRESSWAY
BURNHAM ROAD TO US 41

PLAN AND ELEVATION (5 OF 6)
SECTION 2626.2-R-1
COOK COUNTY
STATION 7+821.737 TO STATION 7+960.424
STRUCTURE NO. 016-W855

DATE 07/04

AMERICAN
CONSULTING ENGINEERS