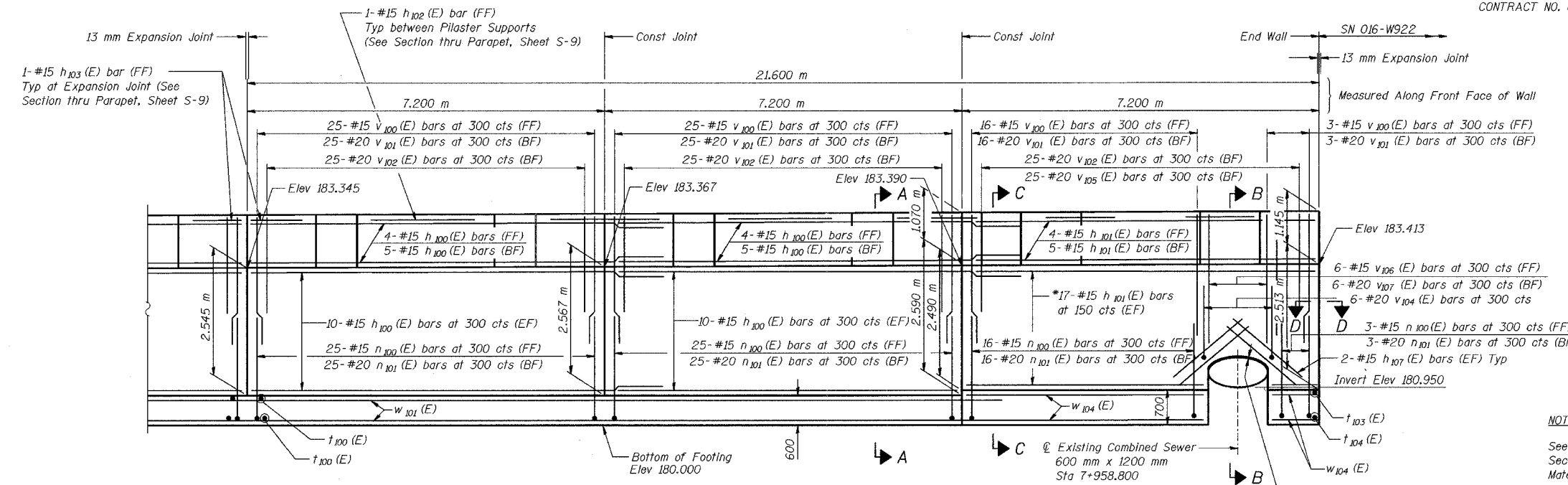
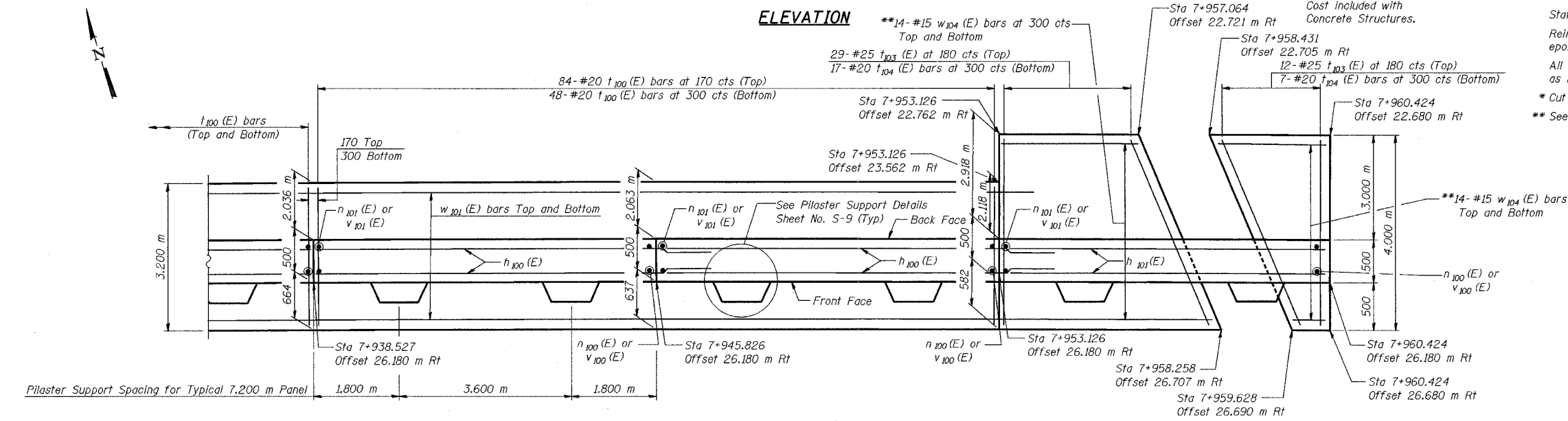


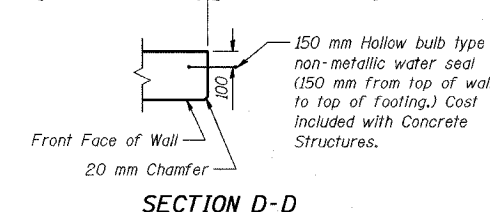
ROUTE NO.	SECTION	COUNTY	SHEET	SHEET	SHEET NO. S-8
P.A. 1	2626.2-R-1	COOK	452	172	12 SHEETS
ILLINOIS					INDOT DES. NO. 0100987



ELEVATION



FOOTING PLAN



SECTION D-D

DESIGNED	MJW
CHECKED	KFA
DRAWN	MJB
CHECKED	GSP

MINIMUM BAR LAPS

#15 bars = 640
#20 bars = 790

LEGEND

BF = Back Face
FF = Front Face
EF = Each Face

NOTES:

- See Sheet S-9 for Section A-A, Section B-B, Section C-C, Expansion Joint Detail, and Bill of Material.
- See Sheet S-10 for Rustication details.
- Stations are referenced to \odot I-80/94.
- Reinforcement bars designated (E) shall be epoxy coated.
- All dimensions are in millimeters (mm) except as noted.
- * Cut h101 (E) bars in field as necessary
- ** See Sheet S-9 for Cut Diagram

ILLINOIS DEPARTMENT OF TRANSPORTATION
I-80/94/US 6
KINGERY-BORMAN EXPRESSWAY
BURNHAM ROAD TO US 41

PLAN AND ELEVATION (6 OF 6)
SECTION 2626.2-R-1
COOK COUNTY
STATION 7+821.737 TO STATION 7+960.424
STRUCTURE NO. 016-W855

DATE 07/04

AMERICAN
CONSULTING ENGINEERS