

TEMPORARY SHEET PILING - ELEVATION

Estimated Area = 1,985 m²
 The cost of Temporary Sheet Piling is included with Excavation, Foundation, Unclassified.

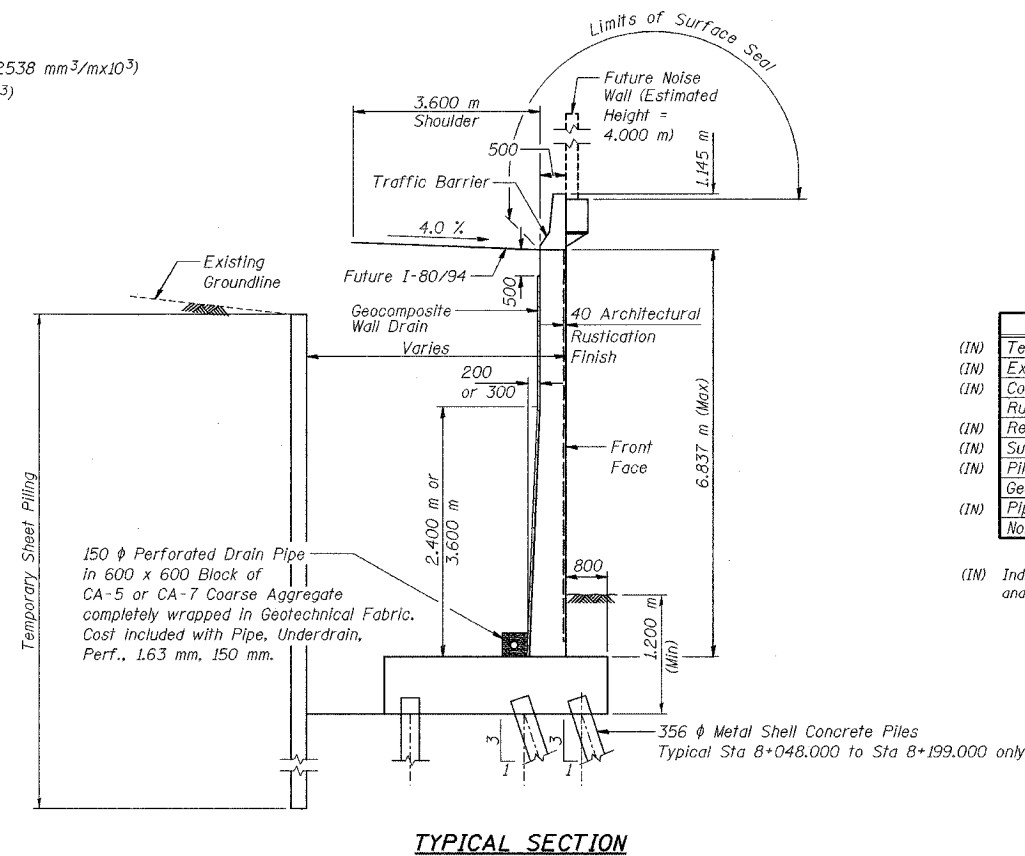
DESIGNED	MJW
CHECKED	KFA
DRAWN	MJB
CHECKED	GSP

GENERAL NOTES

1. Reinforcement bars shall conform to the requirements of AASHTO M 31M or M322M Grade 400.
2. The Contractor shall drive 4 test piles in permanent locations spaced approximately 60 m apart, as directed by the Engineer before ordering the remainder of the piles.
3. All dimensions are in millimeters (mm) except as noted.
4. If the Contractor chooses to alter the temporary cantilevered sheet piling design requirements shown on the plans, a design submittal including plan details and calculations will be required for review and acceptance by the Engineer.
5. All construction joints shall be bonded.

INDEX OF SHEETS

SHEET NO.	TITLE
S-1	General Plan
S-2	Index of Sheets, General Notes and Total Bill of Material
S-3	Plan and Elevation (1 of 11)
S-4	Plan and Elevation (2 of 11)
S-5	Plan and Elevation (3 of 11)
S-6	Plan and Elevation (4 of 11)
S-7	Plan and Elevation (5 of 11)
S-8	Plan and Elevation (6 of 11)
S-9	Plan and Elevation (7 of 11)
S-10	Plan and Elevation (8 of 11)
S-11	Plan and Elevation (9 of 11)
S-12	Plan and Elevation (10 of 11)
S-13	Plan and Elevation (11 of 11)
S-14	Wall Sections and Details
S-15	Rustication Finish Details
S-16	Concrete Pile Details
S-17	Boring Logs (1 of 3)
S-18	Boring Logs (2 of 3)
S-19	Boring Logs (3 of 3)



TOTAL BILL OF MATERIAL

ITEM	UNIT	QUANTITY
(IN) Test Pile, 356 mm	Each	4
(IN) Excavation, Foundation, Unclassified	m ³	4,173
(IN) Concrete, A., Substructure Rustication Finish	m ²	1,061
(IN) Reinforcing Bars, Epoxy Coated	kg	101,320
(IN) Surface Seal	L Sum	0.11
(IN) Pile, Concrete, Steel Shell Encased, 6.35 mm, 356 mm	m	4,014.0
Geocomposite Wall Drain	m ²	1,013
(IN) Pipe, Underdrain, Perf., 1.63 mm, 150 mm	m	246.0
Noise Abatement Wall Anchor Rod Assembly	Each	66

(IN) Indiana Pay Items, denoted by "(Indiana)" in Special Provisions and Summary of Quantities.

ILLINOIS DEPARTMENT OF TRANSPORTATION
 I-80/94/US 6
 KINCERY-BORMAN EXPRESSWAY
 BURHAM ROAD TO US 41
 INDEX OF SHEETS, GENERAL NOTES
 AND TOTAL BILL OF MATERIAL
 SECTION 2626.2-R-1
 LAKE COUNTY, INDIANA
 STATION 7+960.424 TO STATION 8+199.354
 STRUCTURE NO. 016-W922
 DATE 07/04

AMERICAN
 CONSULTING ENGINEERS