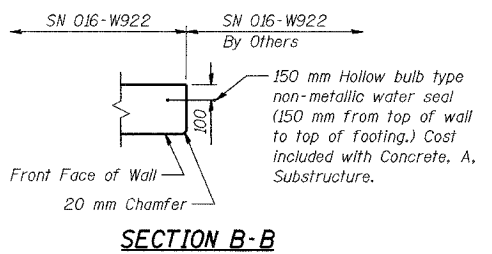
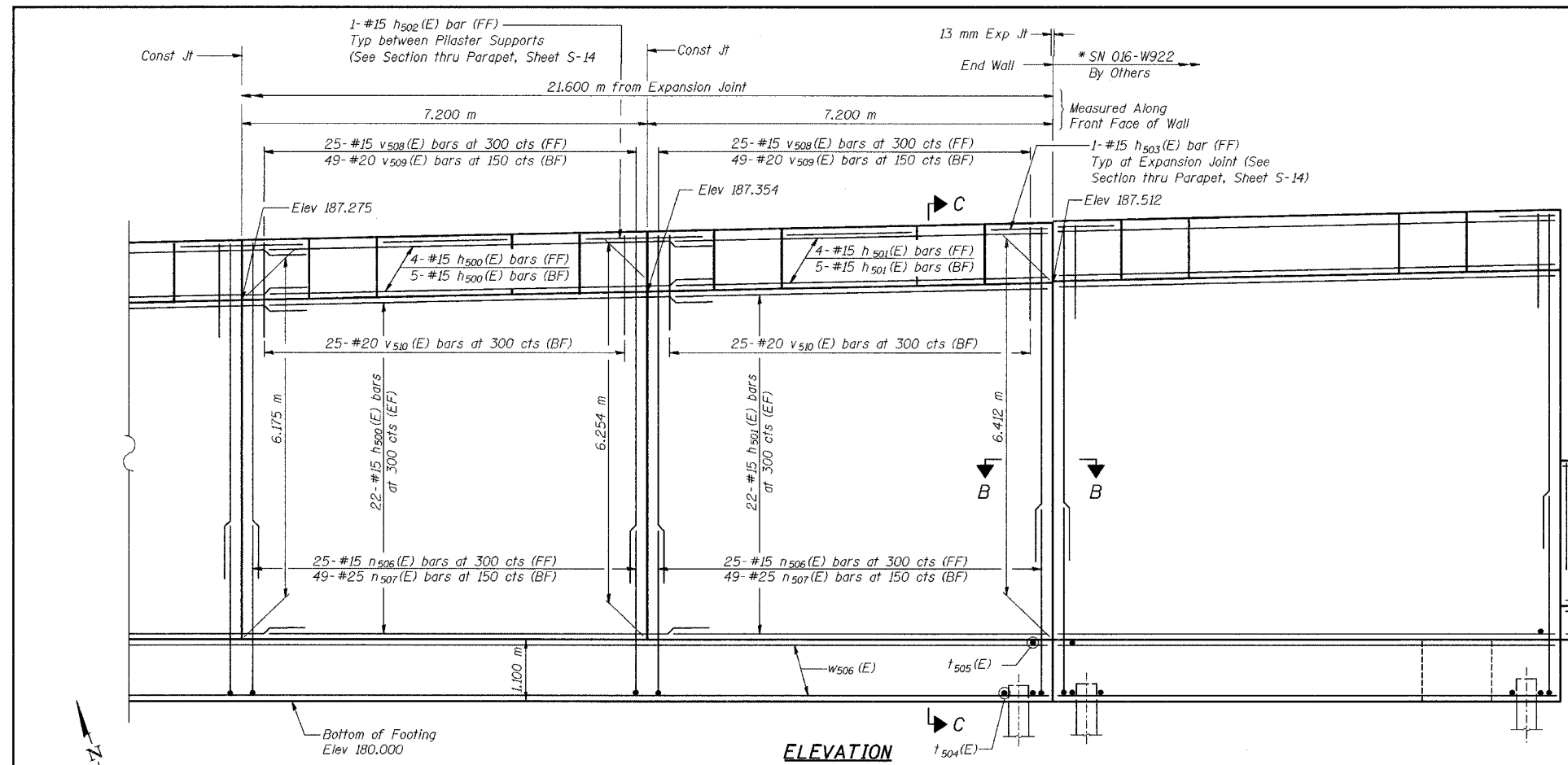
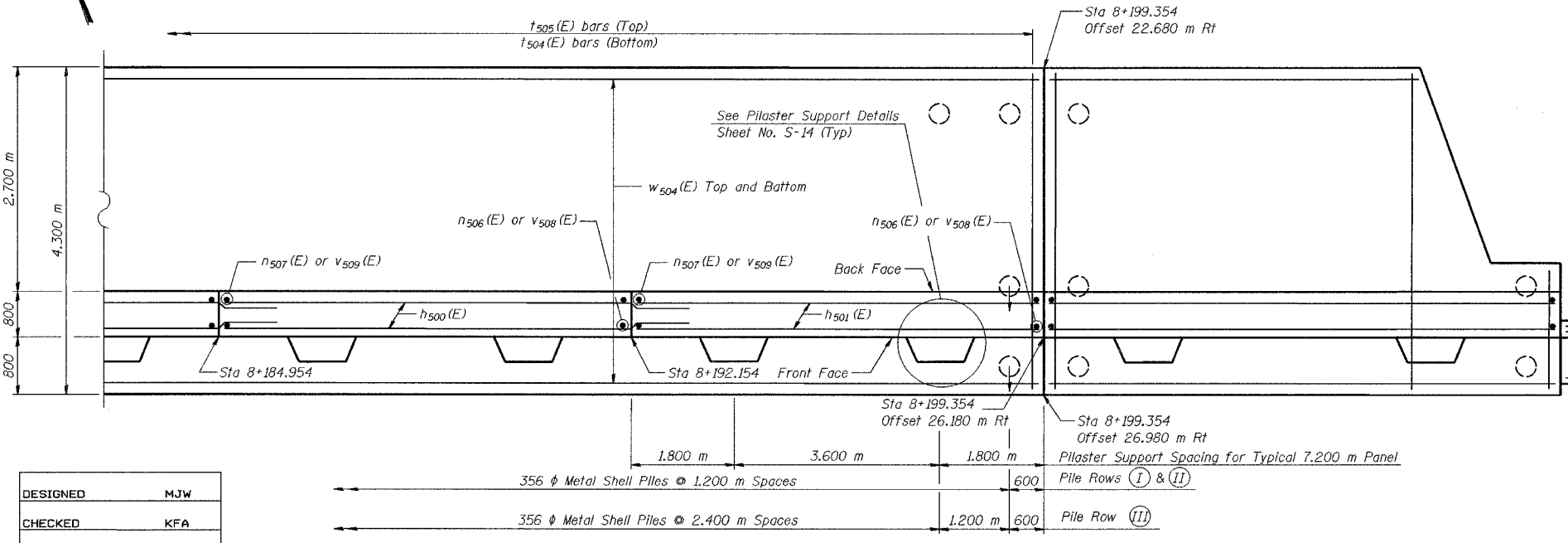


ROUTE NO.	SECTION	COUNTY	ASBESTOS	SHEET	SHEET NO. S-13 19 SHEETS
F.A.I. 88/94	2626.2-R-1	LAKE COUNTY, INDIANA	452	189	
ILLINOIS		FED. AID PROJECT			

CONTRACT NO. 62113 INDOT DES. NO. 0100987



NOTES:
 See Sheet S-14 for Section C-C, Expansion Joint Detail, and Bill of Material.
 See Sheet S-15 for Rustication details.
 Stations are referenced to \odot I-80/94.
 Reinforcement bars designated (E) shall be epoxy coated.
 All dimensions are in millimeters (mm) except as noted.



MINIMUM BAR LAPS
 #15 bars = 640
 #20 bars = 790

LEGEND
 BF = Back Face
 FF = Front Face
 EF = Each Face

DESIGNED	MJW
CHECKED	KFA
DRAWN	MJB
CHECKED	GSP

FOOTING PLAN

***FOR INFORMATION ONLY**

ILLINOIS DEPARTMENT OF TRANSPORTATION
 I-80/94/US 6
 KINGERY-BORMAN EXPRESSWAY
 BURNHAM ROAD TO US 41

PLAN AND ELEVATION (11 OF 11)
SECTION 2626.2-R-1
LAKE COUNTY, INDIANA
STATION 7+960.424 TO STATION 8+199.354
STRUCTURE NO. 016-W922

DATE 07/04

AMERICAN
 CONSULTING ENGINEERS