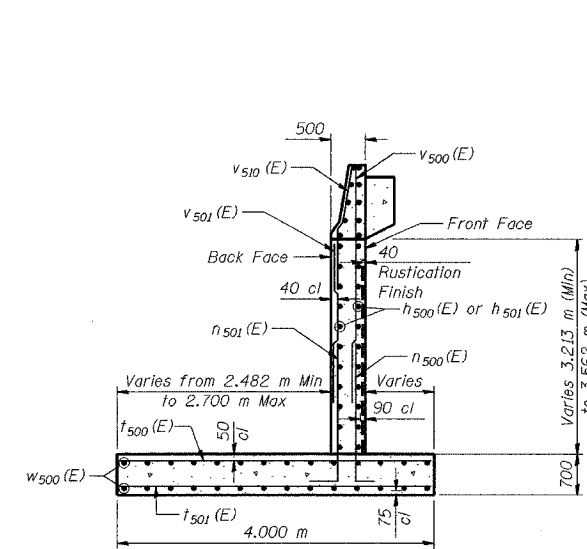


CONTRACT NO. 62113 INDOT DES. NO. 0100987

BILL OF MATERIAL

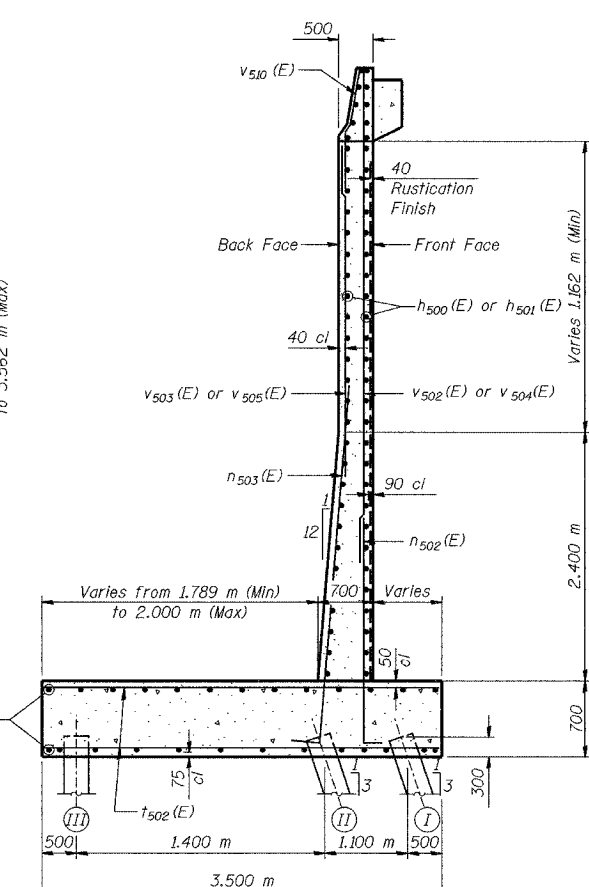
Bar	No.	Size	Length (m)	Shape
h ₅₀₀ (E)	925	#15	7.84	—
h ₅₀₁ (E)	516	#15	7.10	—
h ₅₀₂ (E)	54	#15	2.30	—
h ₅₀₃ (E)	24	#15	1.10	—
h ₅₀₄ (E)	264	#20	2.86	—
n ₅₀₀ (E)	200	#15	2.01	L
n ₅₀₁ (E)	280	#20	2.07	L
n ₅₀₂ (E)	250	#15	3.49	L
n ₅₀₃ (E)	300	#25	3.63	L
n ₅₀₄ (E)	150	#15	4.89	L
n ₅₀₅ (E)	222	#25	5.03	L
n ₅₀₆ (E)	225	#15	5.09	L
n ₅₀₇ (E)	441	#25	5.23	L
f ₅₀₀ (E)	341	#25	3.90	—
f ₅₀₁ (E)	195	#20	3.90	—
f ₅₀₂ (E)	601	#20	3.40	—
f ₅₀₃ (E)	167	#25	4.20	—
f ₅₀₄ (E)	360	#20	4.20	—
f ₅₀₅ (E)	284	#30	4.20	—
v ₅₀₀ (E)	200	#15	4.08	—
v ₅₀₁ (E)	280	#20	3.08	—
v ₅₀₂ (E)	100	#15	3.14	—
v ₅₀₃ (E)	120	#20	2.14	—
v ₅₀₄ (E)	150	#15	4.00	—
v ₅₀₅ (E)	180	#20	3.01	—
v ₅₀₆ (E)	150	#15	3.80	—
v ₅₀₇ (E)	222	#20	2.80	—
v ₅₀₈ (E)	225	#15	4.77	—
v ₅₀₉ (E)	441	#20	3.77	—
v ₅₁₀ (E)	802	#20	1.99	—
v ₅₁₁ (E)	396	#20	2.47	—
w ₅₀₀ (E)	196	#15	8.78	—
w ₅₀₁ (E)	234	#15	8.57	—
w ₅₀₂ (E)	180	#15	7.82	—
w ₅₀₃ (E)	180	#15	7.93	—
w ₅₀₄ (E)	90	#15	7.60	—
w ₅₀₅ (E)	15	#15	3.93	—
w ₅₀₆ (E)	15	#15	3.76	—
w ₅₀₇ (E)	13	#15	2.38	—
w ₅₀₈ (E)	13	#15	1.56	—
w ₅₀₉ (E)	15	#15	2.66	—
w ₅₁₀ (E)	15	#15	1.96	—
Test Pile, 356 mm	Each		4	
Excavation, Foundation, Unclassified	m ³		4.173	
Concrete, A, Substructure	m ³		1,550.7	
Reinforcing Bars, Epoxy Coated	kg		101,320	
Surface Seal (Estimated)	m ²		361	
Pile, Concrete, Steel Shell Encased, 6.35 mm, 356 mm	m		4,014.0	
Geocomposite Wall Drain	m ²		1,013	
Pipe, Underdrain, Perf., 163 mm, 150 mm	m		246.0	
Noise Abatement Wall				
Anchor Rod Assembly	Each		66	



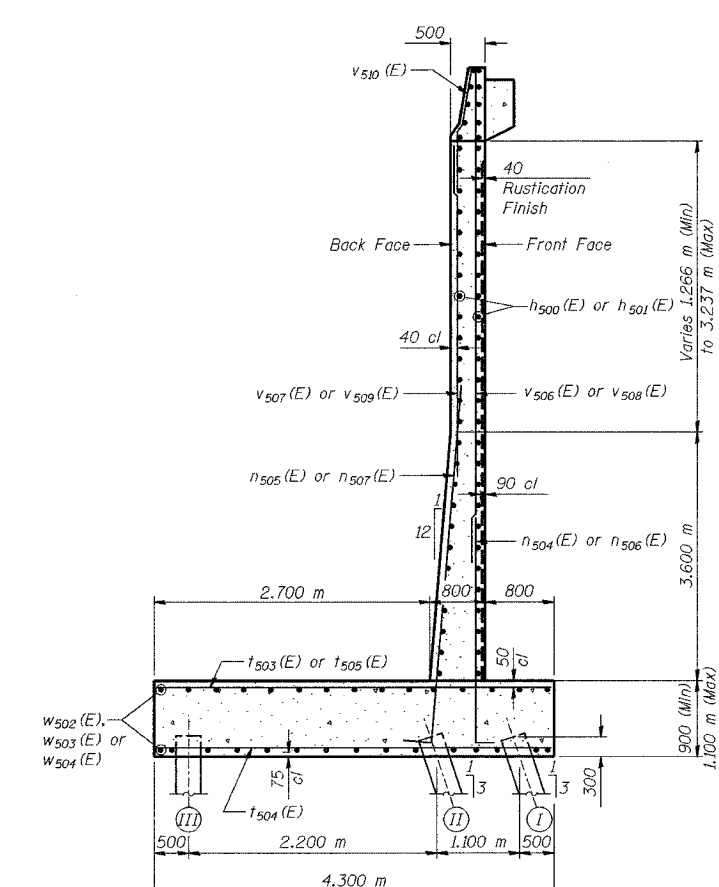
SECTION A-A

PILE DATA

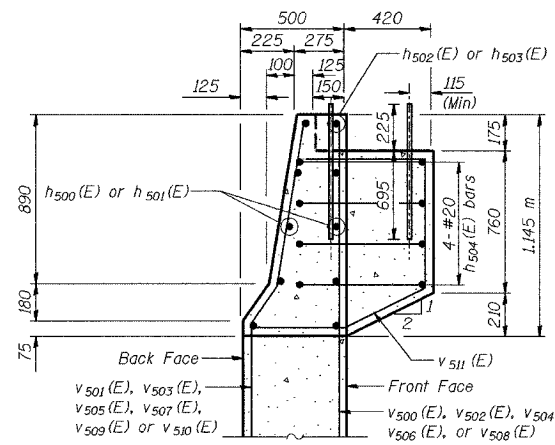
Type - 356 ϕ Metal Shell
 Capacity - 500 kN
 Est. Length - 12.2 m
 No. Req'd. - 329
 Test Piles - 4



SECTION B-B

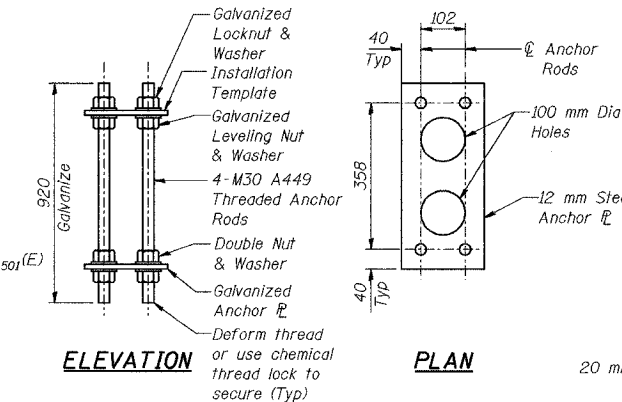


SECTION C-C

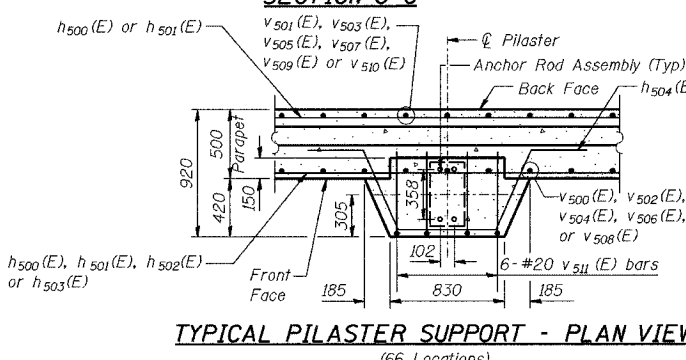


SECTION THRU PARAPET

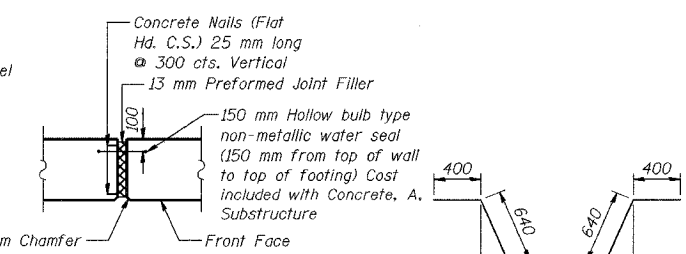
NOTES:
 See Sheet S-15 for Rustication details.
 Reinforcement bars designated (E) shall be epoxy coated.
 All dimensions are in millimeters (mm) except as noted.
 See Typical Section on Sheet S-2 for Drainage Details and Surface Seal Limits.



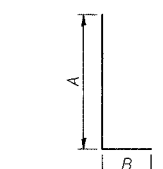
NOISE ABATEMENT WALL ANCHOR ROD ASSEMBLY
 (66 Req'd)



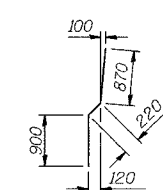
TYPICAL PILASTER SUPPORT - PLAN VIEW
 (66 Locations)



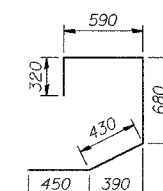
13 MM EXPANSION JOINT DETAIL



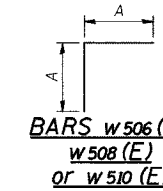
BARS n₅₀₀(E) thru n₅₀₇(E)



BARS v₅₁₀(E)



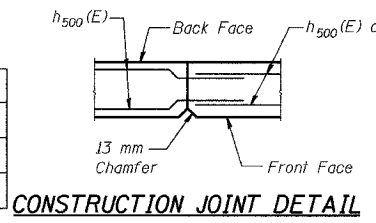
BAR v₅₁₁(E)



BAR DIMENSIONS

Bar	A	B
n ₅₀₀ (E)	1.75 m	260
n ₅₀₁ (E)	1.75 m	320
n ₅₀₂ (E)	3.23 m	260
n ₅₀₃ (E)	3.23 m	400
n ₅₀₄ (E)	4.63 m	260
n ₅₀₅ (E)	4.63 m	400
n ₅₀₆ (E)	4.83 m	260
n ₅₀₇ (E)	4.83 m	400
w ₅₀₅ (E)	2.65 m	1.88 m
w ₅₀₆ (E)	1.88 m	-
w ₅₀₇ (E)	1.10 m	780
w ₅₀₈ (E)	780	-
w ₅₀₉ (E)	1.38 m	980
w ₅₁₀ (E)	980	-

DESIGNED	MJW
CHECKED	KFA
DRAWN	MJB
CHECKED	GSP



CONSTRUCTION JOINT DETAIL

ILLINOIS DEPARTMENT OF TRANSPORTATION
 I-80/94/US 6
 KINGERY-BORMAN EXPRESSWAY
 BURNHAM ROAD TO US 41
WALL SECTIONS AND DETAILS
 SECTION 2626.2-R-1
 LAKE COUNTY, INDIANA
 STATION 7+960.424 TO STATION 8+199.354
 STRUCTURE NO. 016-W922
 DATE 07/04
AMERICAN
 CONSULTING ENGINEERS