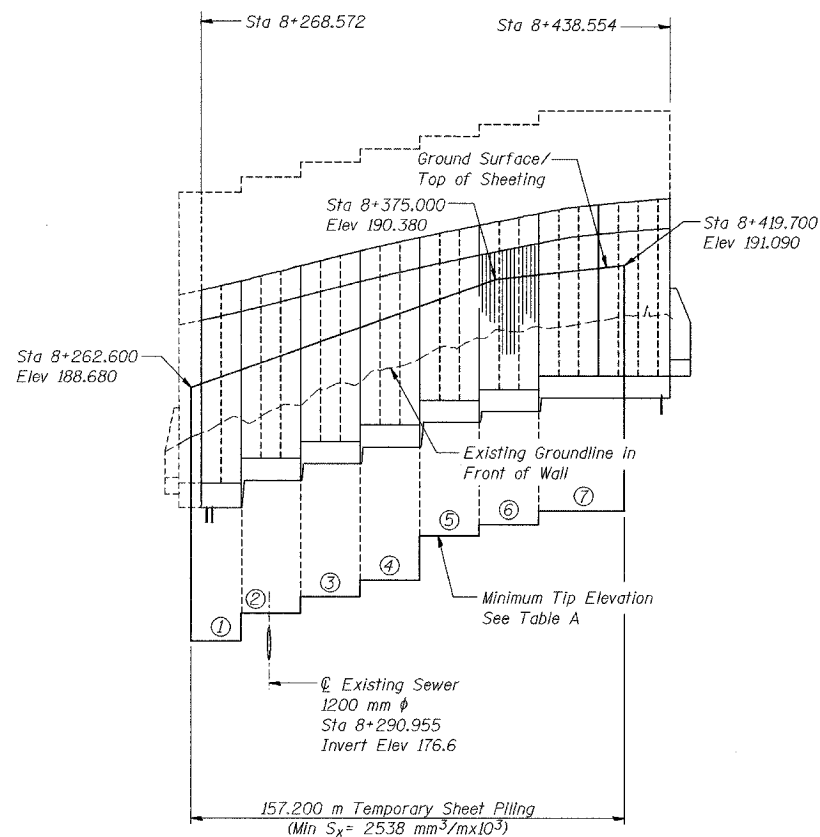


| | | | | | |
|-----------------|------------|----------------------|-------|-------|---------------|
| ROUTE NO. | SECTION | COUNTY | SHEET | SHEET | SHEET NO. S-2 |
| P.O.L. 88+74 | 2626.2-R-1 | LAKE COUNTY, INDIANA | 452 | 197 | 20 SHEETS |
| ILLINOIS | | FED. AID PROJECT | | | |

CONTRACT NO. 62113 INDOT DES. NO. 0100987



TEMPORARY SHEET PILING - ELEVATION

Estimated Area = 1,633 m²
The cost of Temporary Sheet Piling is included with Excavation, Foundation, Unclassified.

TABLE A

| | Minimum Tip Elevation of Sheet Piling | Length (m) |
|---|---|---------------|
| 1 | 177.28 | 20.400 |
| 2 | 177.98 | 21.600 |
| 3 | 178.58 | 21.600 |
| 4 | 178.88 | 21.600 |
| 5 | 180.59 | 21.600 |
| 6 | 180.99 | 21.600 |
| 7 | 181.39 | 28.800 |

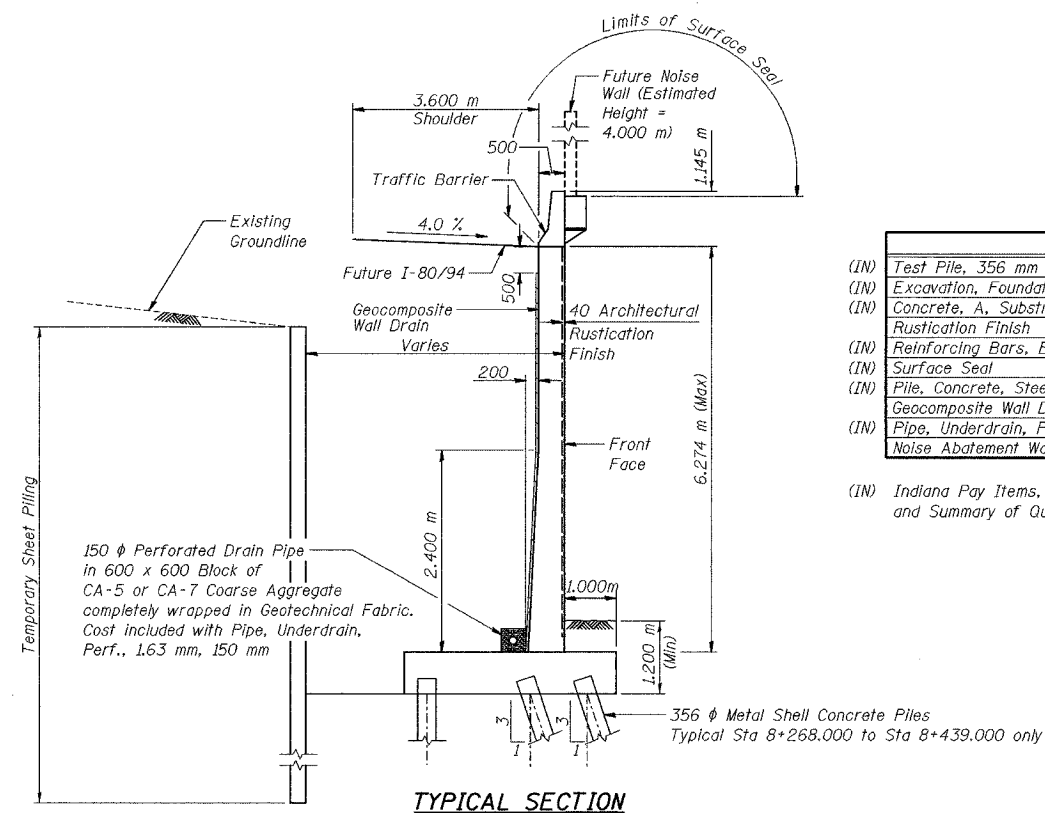
| | |
|----------|-----|
| DESIGNED | MJW |
| CHECKED | KFA |
| DRAWN | MJB |
| CHECKED | GSP |

GENERAL NOTES

1. Reinforcement bars shall conform to the requirements of AASHTO M 31M or M322M Grade 400.
2. The Contractor shall drive 4 test piles in permanent locations spaced approximately 60 m apart, as directed by the Engineer before ordering the remainder of the piles.
3. All dimensions are in millimeters (mm) except as noted.
4. If the Contractor chooses to alter the temporary cantilevered sheet piling design requirements shown on the plans, a design submittal including plan details and calculations will be required for review and acceptance by the Engineer.
5. All construction joints shall be bonded.

INDEX OF SHEETS

| SHEET NO. | TITLE |
|-----------|---|
| S-1 | General Plan |
| S-2 | Index of Sheets, General Notes and Total Bill of Material |
| S-3 | Plan and Elevation (1 of 8) |
| S-4 | Plan and Elevation (2 of 8) |
| S-5 | Plan and Elevation (3 of 8) |
| S-6 | Plan and Elevation (4 of 8) |
| S-7 | Plan and Elevation (5 of 8) |
| S-8 | Plan and Elevation (6 of 8) |
| S-9 | Plan and Elevation (7 of 8) |
| S-10 | Plan and Elevation (8 of 8) |
| S-11 | Wall Sections and Details (1 of 2) |
| S-12 | Wall Sections and Details (2 of 2) |
| S-13 | Rustication Finish Details |
| S-14 | Concrete Pile Details |
| S-15 | Boring Logs (1 of 6) |
| S-16 | Boring Logs (2 of 6) |
| S-17 | Boring Logs (3 of 6) |
| S-18 | Boring Logs (4 of 6) |
| S-19 | Boring Logs (5 of 6) |
| S-20 | Boring Logs (6 of 6) |



TOTAL BILL OF MATERIAL

| ITEM | UNIT | QUANTITY |
|---|----------------|----------|
| (IN) Test Pile, 356 mm | Each | 4 |
| (IN) Excavation, Foundation, Unclassified | m ³ | 3,336 |
| (IN) Concrete, A, Substructure | m ³ | 1,261.8 |
| Rustication Finish | m ² | 972 |
| (IN) Reinforcing Bars, Epoxy Coated | kg | 90,300 |
| (IN) Surface Seal | L Sum | 0.08 |
| (IN) Pile, Concrete, Steel Shell Encased, 6.35 mm, 356 mm | m | 5,776.0 |
| Geocomposite Wall Drain | m ² | 935 |
| (IN) Pipe, Underdrain, Perf., 1.63 mm, 150 mm | m | 189.0 |
| Noise Abatement Wall Anchor Rod Assembly | Each | 52 |

(IN) Indiana Pay Items, denoted by "Indiana" in Special Provisions and Summary of Quantities.

ILLINOIS DEPARTMENT OF TRANSPORTATION
I-80/94/US 6
KINGERY-BORMAN EXPRESSWAY
BURNHAM ROAD TO US 41
**INDEX OF SHEETS, GENERAL NOTES
AND TOTAL BILL OF MATERIAL**
SECTION 2626.2-R-1
LAKE COUNTY, INDIANA
STATION 8+268.572 TO STATION 8+445.954
STRUCTURE NO. 016-W857
DATE 07/04

AMERICAN
CONSULTING ENGINEERS