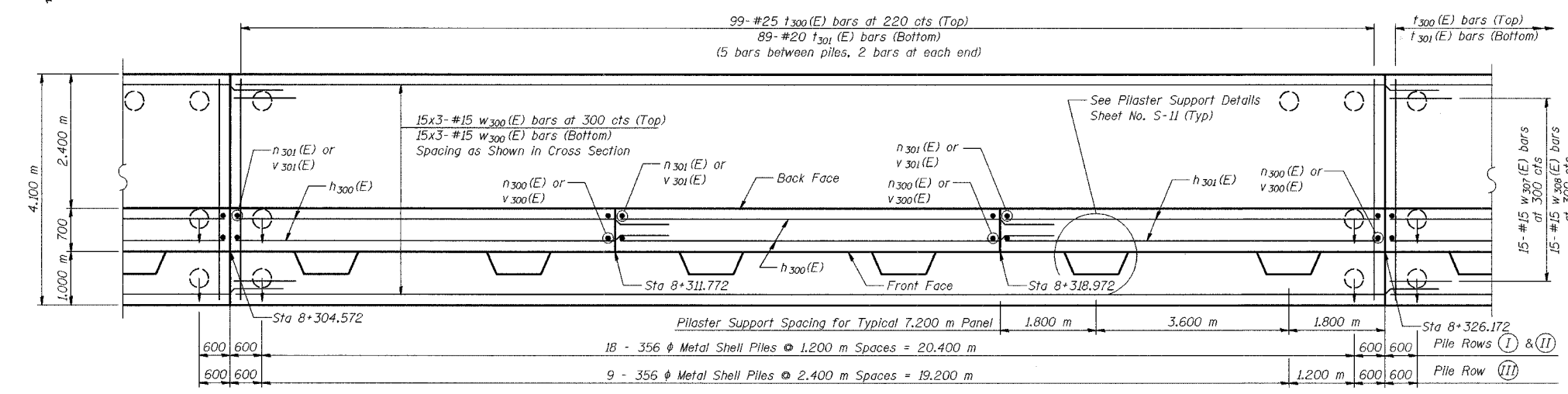
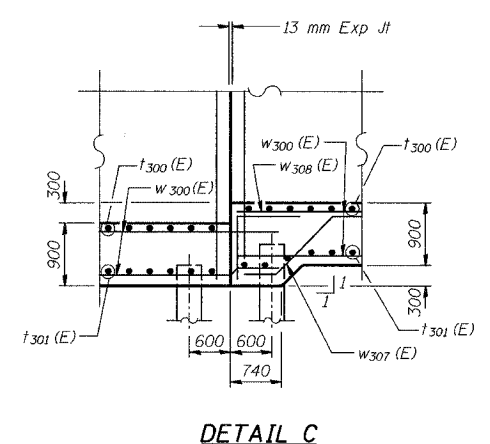
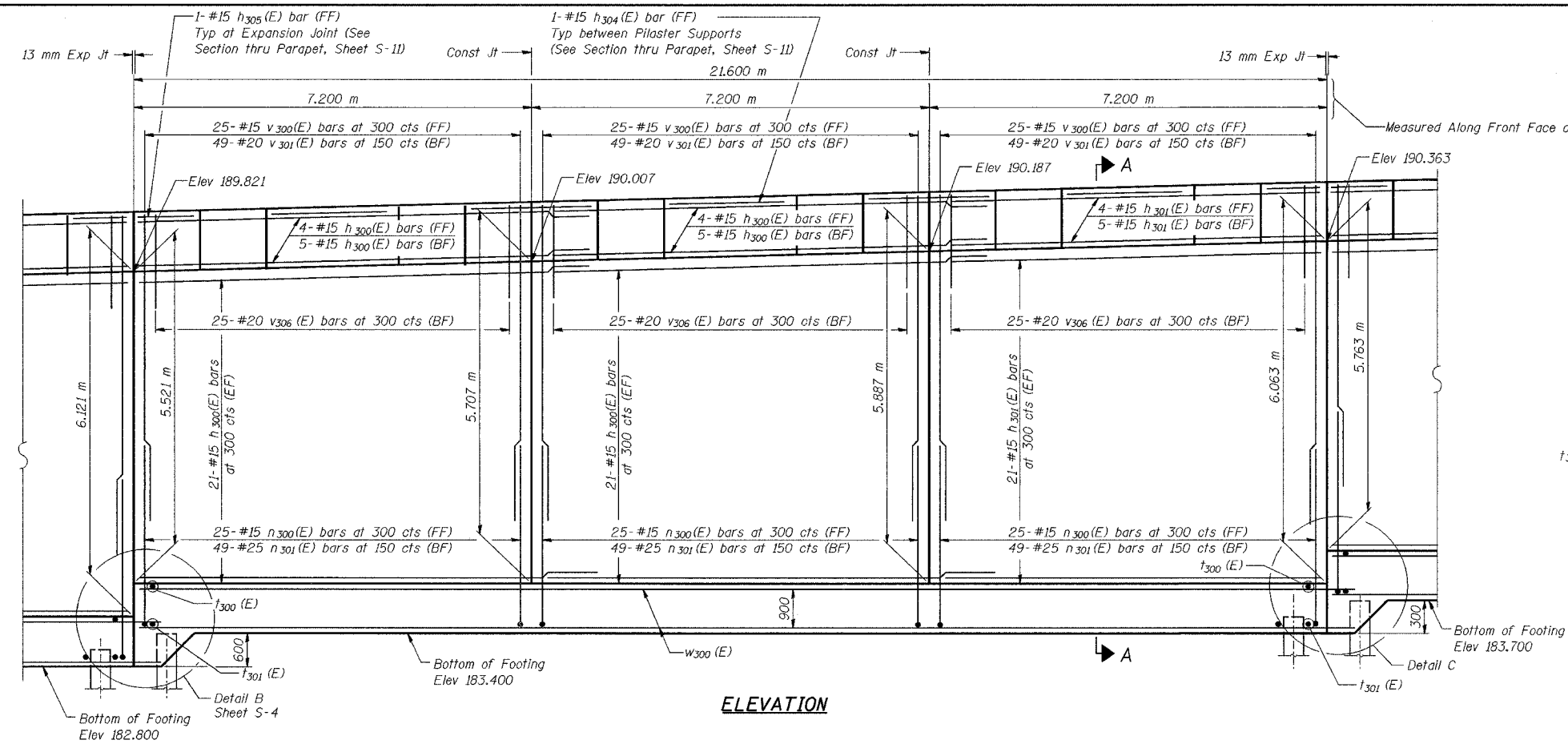


ROUTE NO.	SECTION	COUNTY	SHEET NO.	SHEET	SHEET NO. S-5 20 SHEETS
P.A.L. 08/74	2626.2-R-1	LAKE COUNTY, INDIANA	452	200	
ILLINOIS FEDERAL PROJECT					CONTRACT NO. 62113 INDOT DES. NO. 0100987



**NOTES:**  
 See Sheet S-11 for Section A-A.  
 See Sheet S-12 for Expansion Joint Detail and Bill of Material.  
 See Sheet S-13 for Rustication details.  
 Stations are referenced to  $\mathcal{L}$  I-80/94.  
 Reinforcement bars designated (E) shall be epoxy coated.  
 All dimensions are in millimeters (mm) except as noted.  
 Bars indicated thus 20 x 3-#15 etc. indicates 20 lines of bars with 3 lengths per line.

DESIGNED	MJW
CHECKED	KFA
DRAWN	MJB
CHECKED	GSP

**FOOTING PLAN**

**MINIMUM BAR LAPS**  
 #15 bars = 640  
 #20 bars = 790

**LEGEND**  
 BF = Back Face  
 FF = Front Face  
 EF = Each Face

ILLINOIS DEPARTMENT OF TRANSPORTATION  
 I-80/94/US 6  
 KINGERY-BORMAN EXPRESSWAY  
 BURNHAM ROAD TO US 41  
**PLAN AND ELEVATION (3 OF 8)**  
**SECTION 2626.2-R-1**  
**LAKE COUNTY, INDIANA**  
**STATION 8+268.572 TO STATION 8+445.954**  
**STRUCTURE NO. 016-W857**  
 DATE 07/94  
**AMERICAN**  
 CONSULTING ENGINEERS