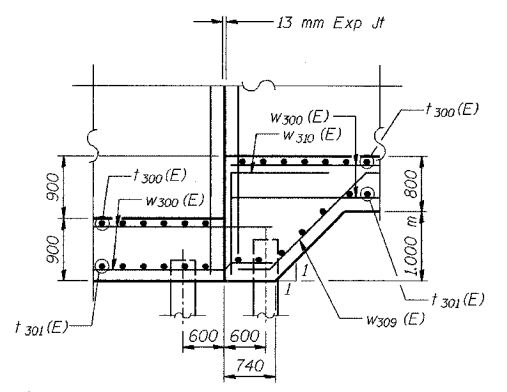
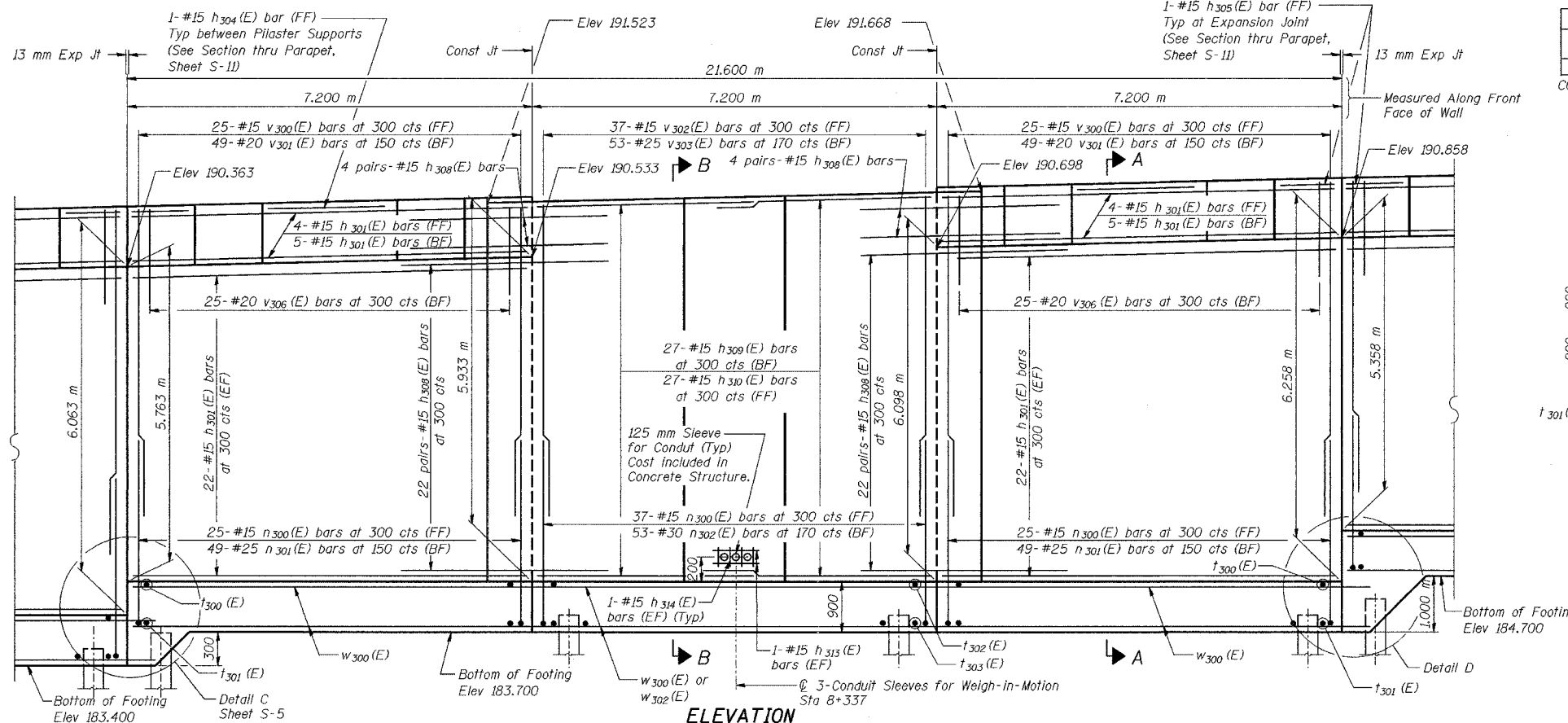


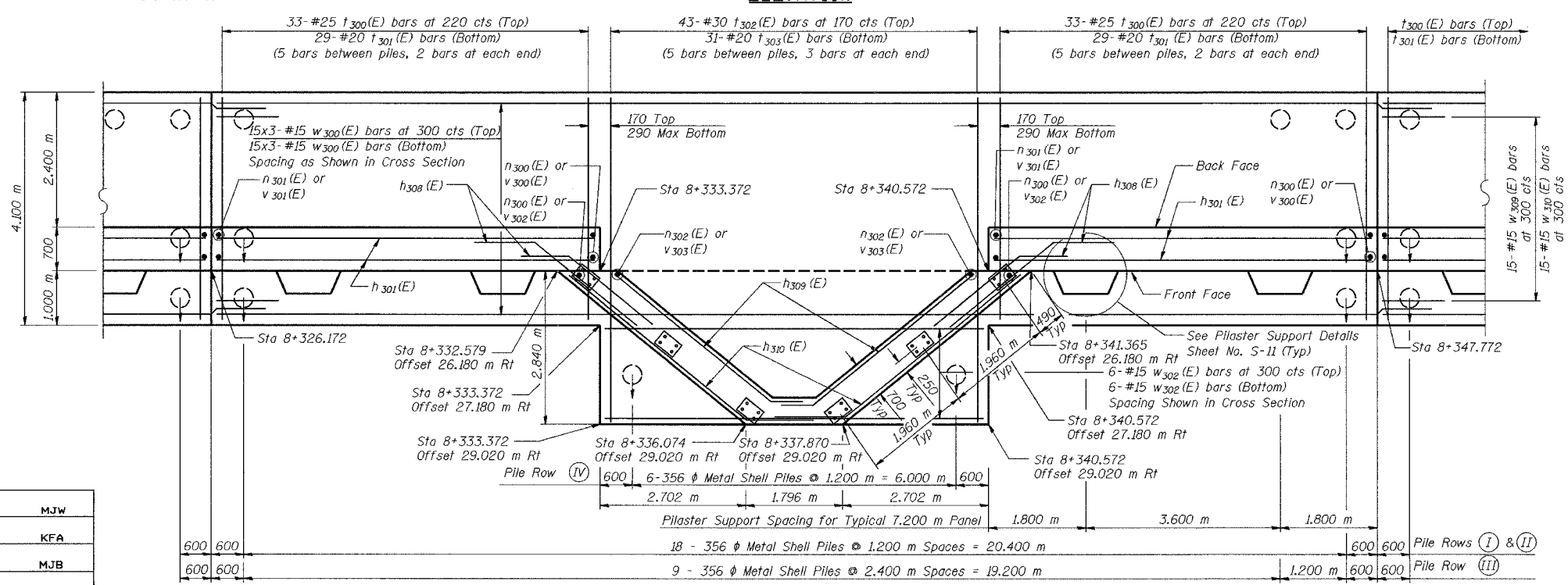
ROUTE NO.	SECTION	COUNTY	SHEET NO.	TOTAL SHEETS
2626.2-R-1		LAKE COUNTY, INDIANA	452	201
SHEET NO. S-6				
20 SHEETS				

CONTRACT NO. 62113 INDOT DES. NO. 0100987



DETAIL D

NOTES:
 See Sheet S-11 for Section A-A, Section B-B
 See Sheet S-12 for Expansion Joint Detail and Bill of Material.
 See Sheet S-13 for Rustication details.
 Stations are referenced to \odot I-80/94.
 Reinforcement bars designated (E) shall be epoxy coated.
 All dimensions are in millimeters (mm) except as noted.
 Bars indicated thus 20 x 3-#15 etc. indicates 20 lines of bars with 3 lengths per line.
 See Electrical Drawings for Conduit Details



FOOTING PLAN

DESIGNED	MJW
CHECKED	KFA
DRAWN	MJB
CHECKED	GSP

MINIMUM BAR LAPS

#15 bars = 640
#20 bars = 790
#25 bars = 1320

LEGEND

BF = Back Face
FF = Front Face
EF = Each Face

ILLINOIS DEPARTMENT OF TRANSPORTATION
 I-80/94/US 6
 KINGERY-BORMAN EXPRESSWAY
 BURNHAM ROAD TO US 41

PLAN AND ELEVATION (4 OF 8)
SECTION 2626.2-R-1
LAKE COUNTY, INDIANA
STATION 8+268.572 TO STATION 8+445.954
STRUCTURE NO. 016-W857

DATE 07/04

AMERICAN
 CONSULTING ENGINEERS