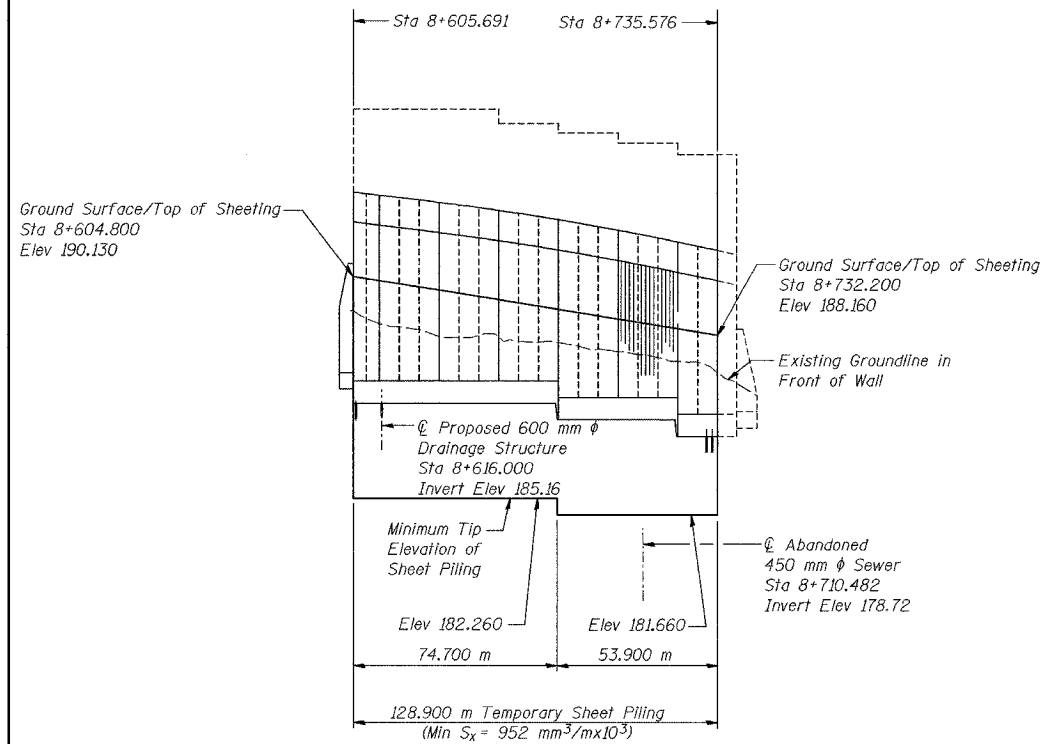


ROUTE NO.	SECTION	COUNTY	SHEETS	SHEET NO.	SHEET NO. S-2 17 SHEETS
F.A.L. 88-74	2626.2-R-1	LAKE COUNTY, INDIANA	452	217	
BLANKET		FED. AID PROJECT			

CONTRACT NO. 62113 INDOT DES. NO. 0100987



**TEMPORARY SHEET PILING - ELEVATION**

Estimated Area = 941 m<sup>2</sup>

The cost of Temporary Sheet Piling is included with Excavation, Foundation, Unclassified.

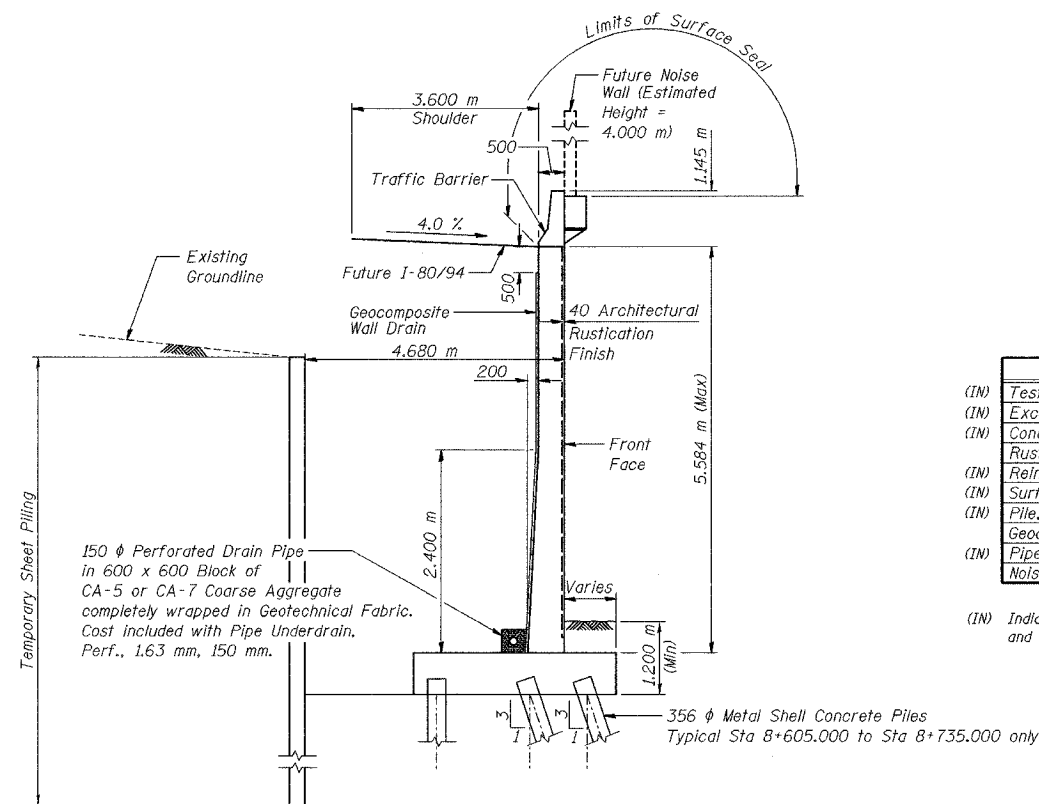
DESIGNED	MJW
CHECKED	KFA
DRAWN	MJB
CHECKED	GSP

**GENERAL NOTES**

1. Reinforcement bars shall conform to the requirements of AASHTO M 31M or M322M Grade 400.
2. The Contractor shall drive 3 test piles in permanent locations spaced approximately 60 m apart, as directed by the Engineer before ordering the remainder of the piles.
3. All dimensions are in millimeters (mm) except as noted.
4. If the Contractor chooses to alter the temporary cantilevered sheet piling design requirements shown on the plans, a design submittal including plan details and calculations will be required for review and acceptance by the Engineer.
5. All construction joints shall be bonded.

**INDEX OF SHEETS**

SHEET NO.	TITLE
S-1	General Plan
S-2	Index of Sheets, General Notes and Total Bill of Material
S-3	Plan and Elevation (1 of 6)
S-4	Plan and Elevation (2 of 6)
S-5	Plan and Elevation (3 of 6)
S-6	Plan and Elevation (4 of 6)
S-7	Plan and Elevation (5 of 6)
S-8	Plan and Elevation (6 of 6)
S-9	Wall Sections and Details
S-10	Rustication Finish Details
S-11	Concrete Pile Details
S-12	Boring Logs (1 of 6)
S-13	Boring Logs (2 of 6)
S-14	Boring Logs (3 of 6)
S-15	Boring Logs (4 of 6)
S-16	Boring Logs (5 of 6)
S-17	Boring Logs (6 of 6)



**TYPICAL SECTION**

**TOTAL BILL OF MATERIAL**

ITEM	UNIT	QUANTITY
(IN) Test Pile, 356 mm	Each	3
(IN) Excavation, Foundation, Unclassified	m <sup>3</sup>	1,801
(IN) Concrete, A, Substructure	m <sup>3</sup>	849.1
Rustication Finish	m <sup>2</sup>	647
(IN) Reinforcing Bars, Epoxy Coated	kg	59,570
(IN) Surface Seal	L Sum	0.06
(IN) Pile, Concrete, Steel Shell Encased, 6.35 mm, 356 mm	m	2,834.0
Geocomposite Wall Drain	m <sup>2</sup>	620
(IN) Pipe, Underdrain, Perf., 1.63 mm, 150 mm	m	145.0
Noise Abatement Wall Anchor Rod Assembly	Each	37

(IN) Indiana Pay Items, denoted by "Indiana" in Special Provisions and Summary of Quantities.

ILLINOIS DEPARTMENT OF TRANSPORTATION  
I-80/94/US 6  
KINDERY-BORNMAN EXPRESSWAY  
BURHAM ROAD TO US 41  
**INDEX OF SHEETS, GENERAL NOTES  
AND TOTAL BILL OF MATERIAL**  
SECTION 2626.2-R-1  
LAKE COUNTY, INDIANA  
STATION 8+600.619 TO STATION 8+735.576  
STRUCTURE NO. 016-W859  
DATE 07/04  
**AMERICAN**  
CONSULTING ENGINEERS