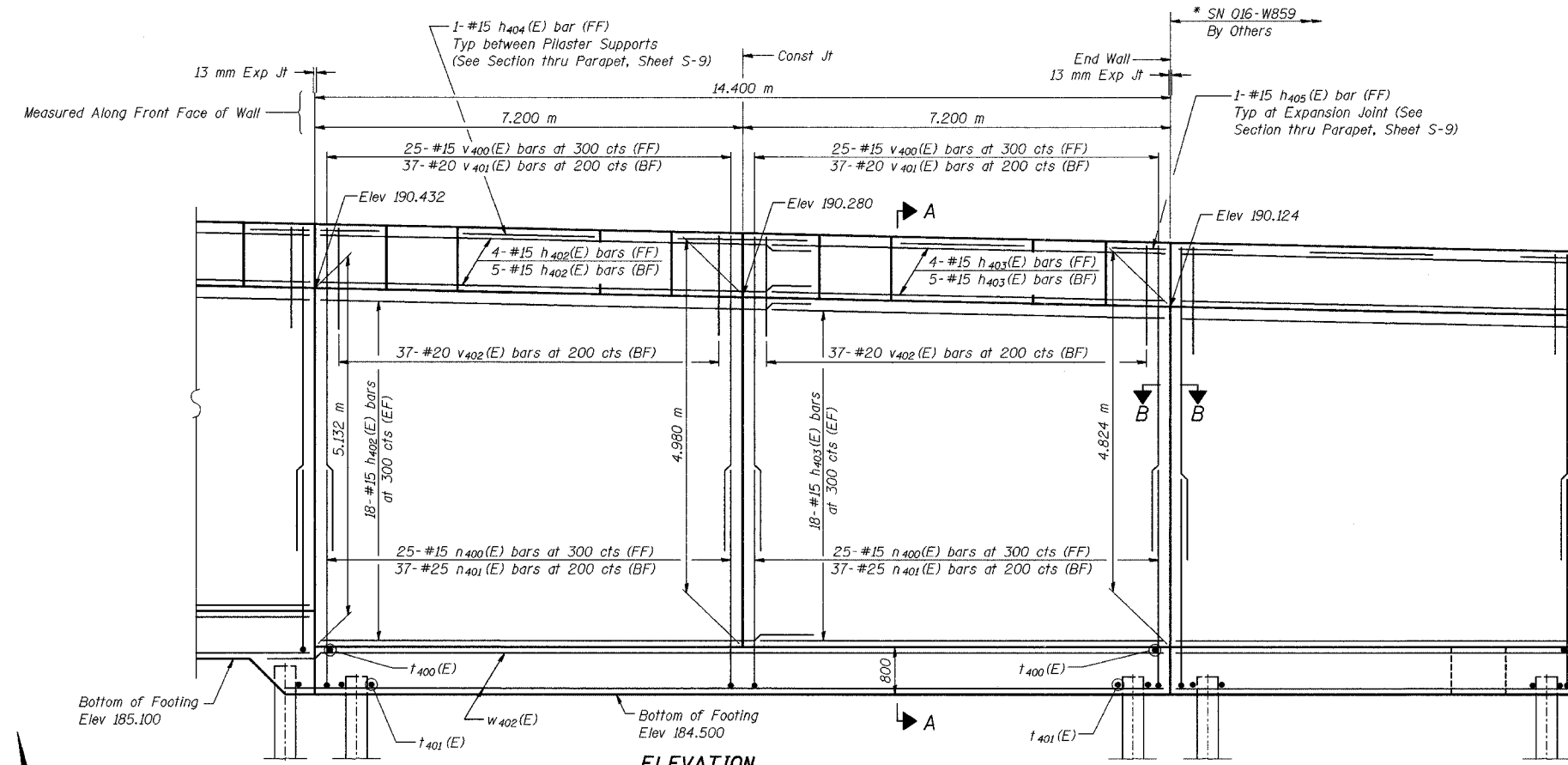
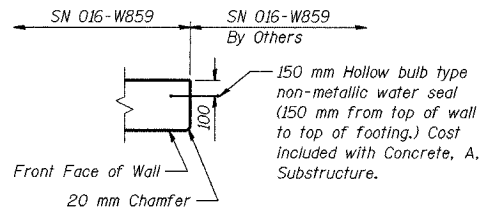


ROUTE NO.	SECTION	COUNTY	SHEETS	SHEET	SHEET NO. S-8
F-1, L-1	2626.2-R-1	LAKE COUNTY, INDIANA	452	223	17 SHEETS
ILLINOIS FED. AID PROJECT-					

CONTRACT NO. 62113 INDOT DES. NO. 0100987

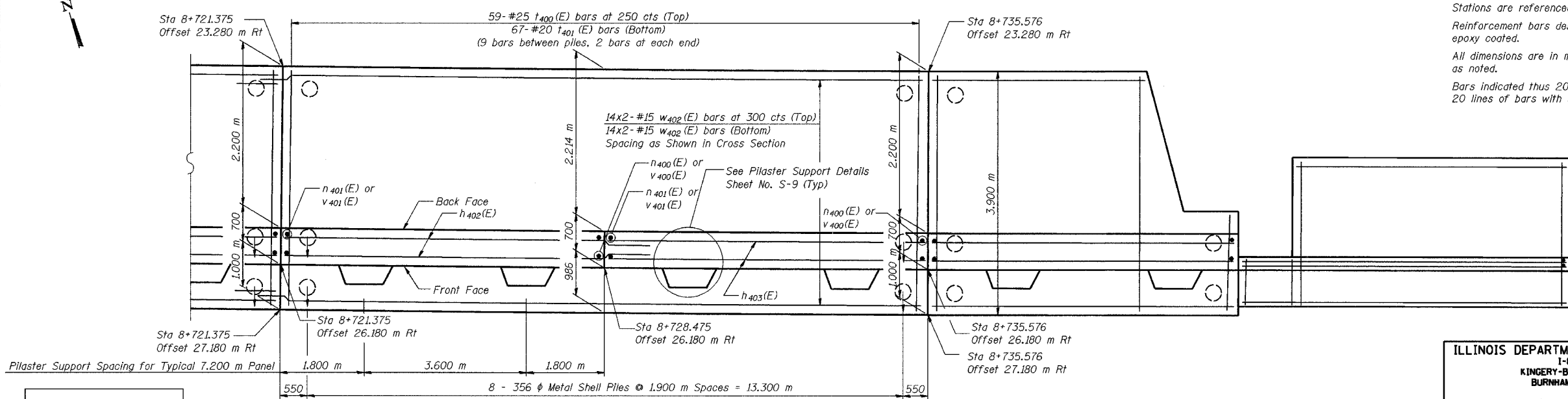


**ELEVATION**



**SECTION B-B**

**NOTES:**  
 See Sheet S-9 for Section A-A, Expansion Joint Detail, and Bill of Material.  
 See Sheet S-10 for Rustication details.  
 Stations are referenced to  $\mathcal{L}$  I-80/94.  
 Reinforcement bars designated (E) shall be epoxy coated.  
 All dimensions are in millimeters (mm) except as noted.  
 Bars indicated thus 20 x 3-#15 etc. indicates 20 lines of bars with 3 lengths per line.



**FOOTING PLAN**

**MINIMUM BAR LAPS**

#15 bars = 640  
 #20 bars = 790

**LEGEND**

BF = Back Face  
 FF = Front Face  
 EF = Each Face

DESIGNED	MJW
CHECKED	KFA
DRAWN	MJB
CHECKED	GSP

**\*FOR INFORMATION ONLY**

ILLINOIS DEPARTMENT OF TRANSPORTATION  
 I-80/94/US 6  
 KINGERY-BORNHAY EXPRESSWAY  
 BURNHAM ROAD TO US 41  
**PLAN AND ELEVATION (6 OF 6)**  
**SECTION 2626.2-R-1**  
 LAKE COUNTY, INDIANA  
 STATION 8+600.619 TO STATION 8+735.576  
 STRUCTURE NO. 016-W859  
 DATE 07/04  
**AMERICAN**  
 CONSULTING ENGINEERS