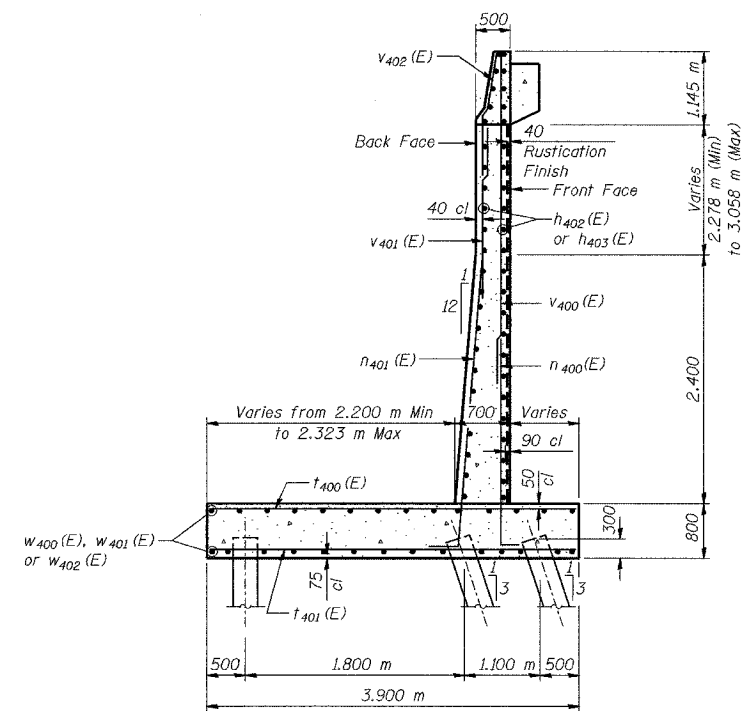
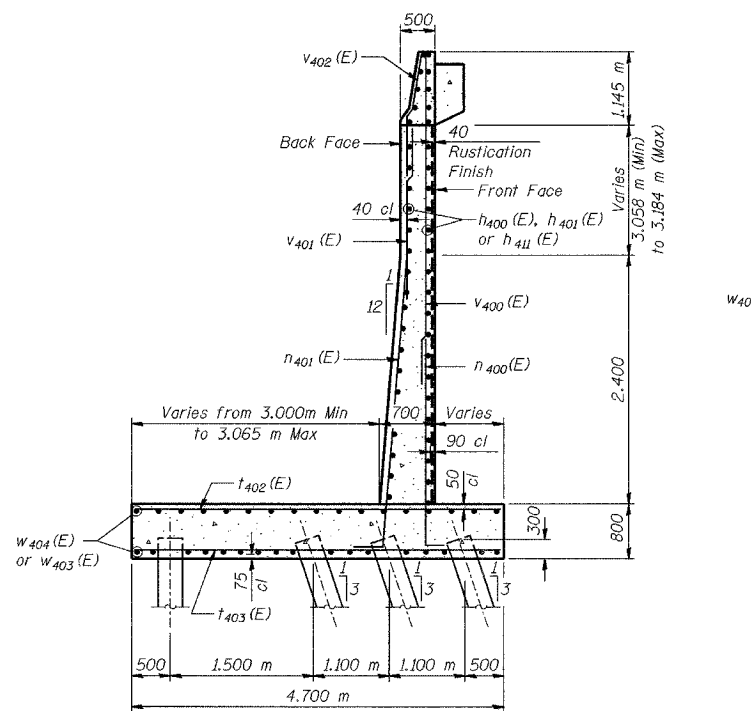


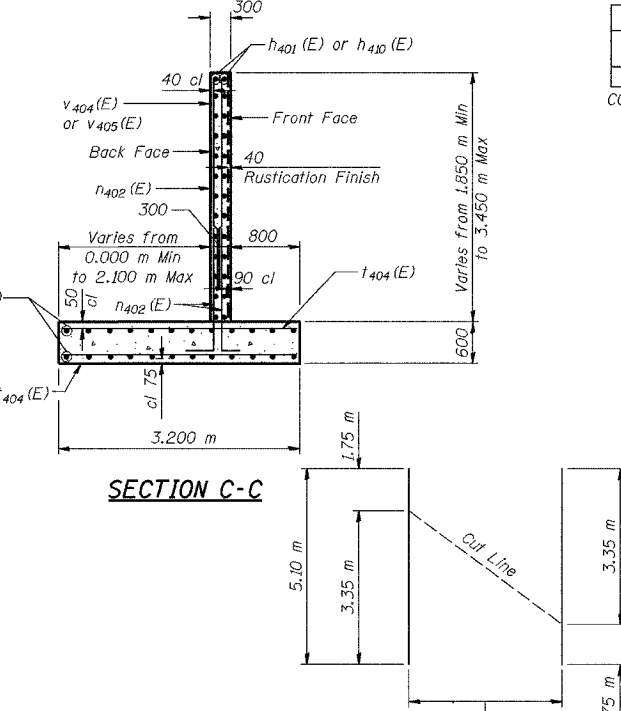
ROUTE NO.	SECTION	COUNTY	SHEETS	SHEET	SHEET NO. S-9
F.A.L. NO./A	20262-R-1	LAKE COUNTY, INDIANA	452	224	
ILLINOIS FEDERAL PROJECT					17 SHEETS
CONTRACT NO. 62113 INDOT DES. NO. 0100987					



**SECTION A-A**

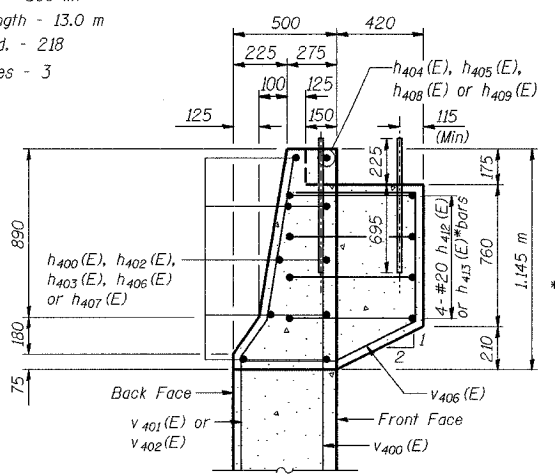


**SECTION B-B**

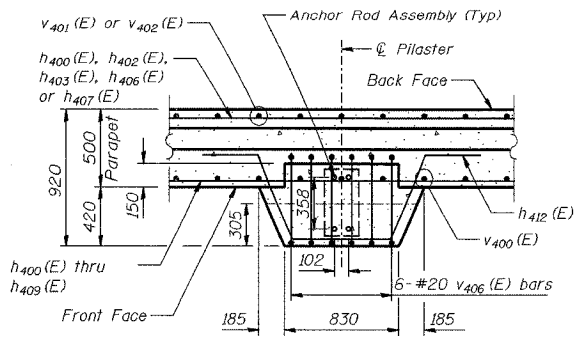


**SECTION C-C**

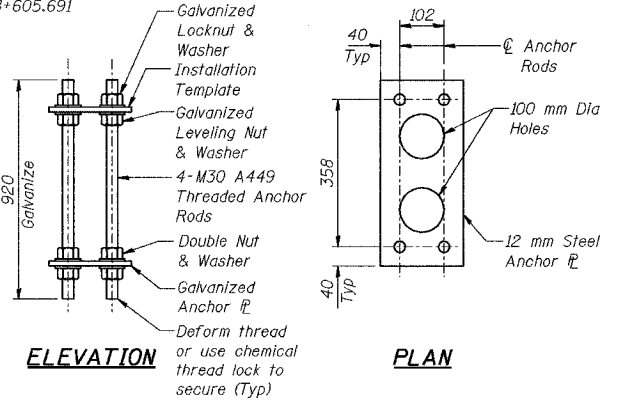
**PILE DATA**  
 Type - 356 φ Metal Shell  
 Capacity - 500 kN  
 Est. Length - 13.0 m  
 No. Req'd - 218  
 Test Piles - 3



**SECTION THRU PARAPET**



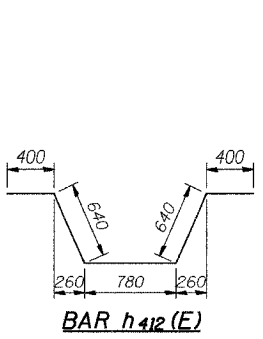
**PILASTER SUPPORT - PLAN VIEW**  
(37 Locations)



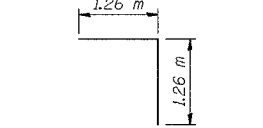
**ELEVATION**

**PLAN**

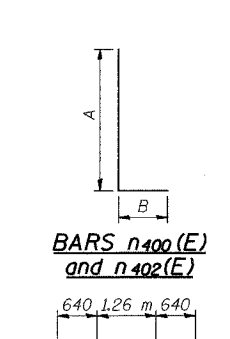
**NOISE ABATEMENT WALL ANCHOR ROD ASSEMBLY**  
(37 Req'd)



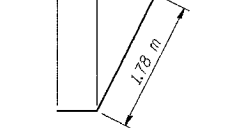
**BAR h412(E)**



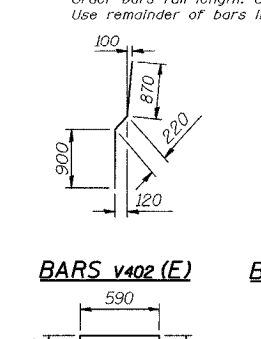
**BAR w405(E)**



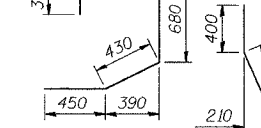
**BARS n400(E) and n402(E)**



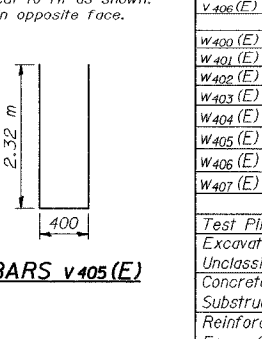
**BAR w406(E)**



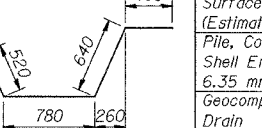
**BAR v402(E)**



**BAR v406(E)**



**BAR v405(E)**

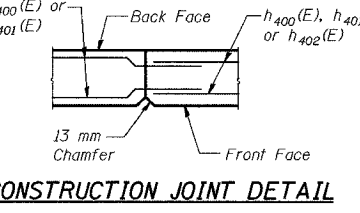


**BAR h413(E)**

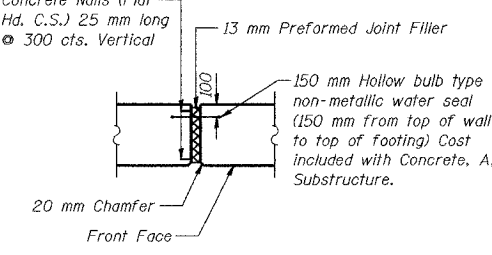
**BAR DIMENSIONS**

Bar	A	B
n400(E)	3.20 m	260
n401(E)	3.20 m	400
n402(E)	2.33 m	260

DESIGNED	MJW
CHECKED	KFA
DRAWN	MJB
CHECKED	GSP



**CONSTRUCTION JOINT DETAIL**



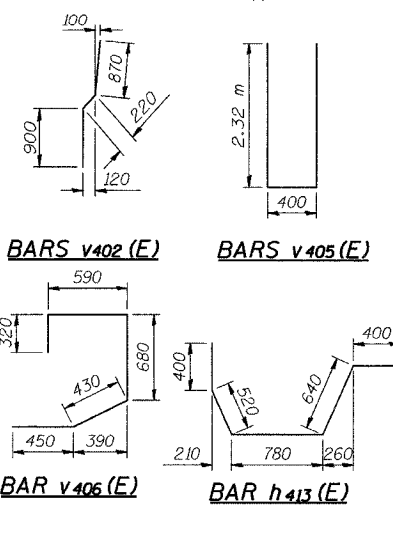
**13 MM EXPANSION JOINT DETAIL**

**BILL OF MATERIAL**

Bar	No.	Size	Length (m)	Shape
h400(E)	174	#15	5.30	—
h401(E)	26	#15	5.00	—
h402(E)	409	#15	7.84	—
h403(E)	274	#15	7.10	—
h404(E)	28	#15	2.30	—
h405(E)	11	#15	1.10	—
h406(E)	9	#15	7.90	—
h407(E)	47	#15	7.04	—
h408(E)	2	#15	2.15	—
h409(E)	1	#15	1.90	—
h410(E)	2	#15	3.58	—
h411(E)	78	#20	7.90	—
h412(E)	144	#20	2.86	—
h413(E)	4	#20	2.74	—
n400(E)	452	#15	3.46	—
n401(E)	666	#25	3.60	—
n402(E)	46	#15	2.59	—
t400(E)	461	#25	3.80	—
t401(E)	541	#20	3.80	—
t402(E)	86	#25	4.60	—
t403(E)	56	#20	4.60	—
t404(E)	44	#20	3.10	—
v400(E)	457	#15	3.71	—
v401(E)	677	#20	3.86	—
v402(E)	677	#20	1.99	—
v403(E)	16	#15	3.35	—
v404(E)	16	#15	5.10	—
v405(E)	11	#20	5.04	—
v406(E)	222	#20	2.47	—
w400(E)	196	#15	8.76	—
w401(E)	140	#15	9.29	—
w402(E)	56	#15	7.85	—
w403(E)	34	#15	5.90	—
w404(E)	68	#15	4.98	—
w405(E)	28	#15	2.52	—
w406(E)	28	#15	3.06	—
w407(E)	48	#15	2.82	—
Test Pile, 356 mm	Each		3	—
Excavation, Foundation, Unclassified			m <sup>3</sup>	1,801
Concrete, A, Substructure			m <sup>3</sup>	849.1
Reinforcing Bars, Epoxy Coated			kg	59,570
Surface Seal (Estimated)			m <sup>2</sup>	207
Pile, Concrete, Steel Shell Encased, 6.35 mm, 356 mm Geocomposite Wall Drain			m	2,834.0
Pipe, Underdrain, Perf., 1.63 mm, 150 mm Noise Abatement Wall Anchor Rod Assembly			m	145.0
			Each	37

**\*\* FIELD CUTTING DIAGRAM**

Order bars full length. Cut to fit as shown. Use remainder of bars in opposite face.



**ILLINOIS DEPARTMENT OF TRANSPORTATION**  
 I-80/94/US 6  
 KINGERY-BORMAN EXPRESSWAY  
 BURNHAM ROAD TO US 41  
**WALL SECTIONS AND DETAILS**  
**SECTION 2626.2-R-1**  
**LAKE COUNTY, INDIANA**  
**STATION 8+600.619 TO STATION 8+735.576**  
**STRUCTURE NO. 016-W859**  
 DATE 07/04  
**AMERICAN**  
 CONSULTING ENGINEERS