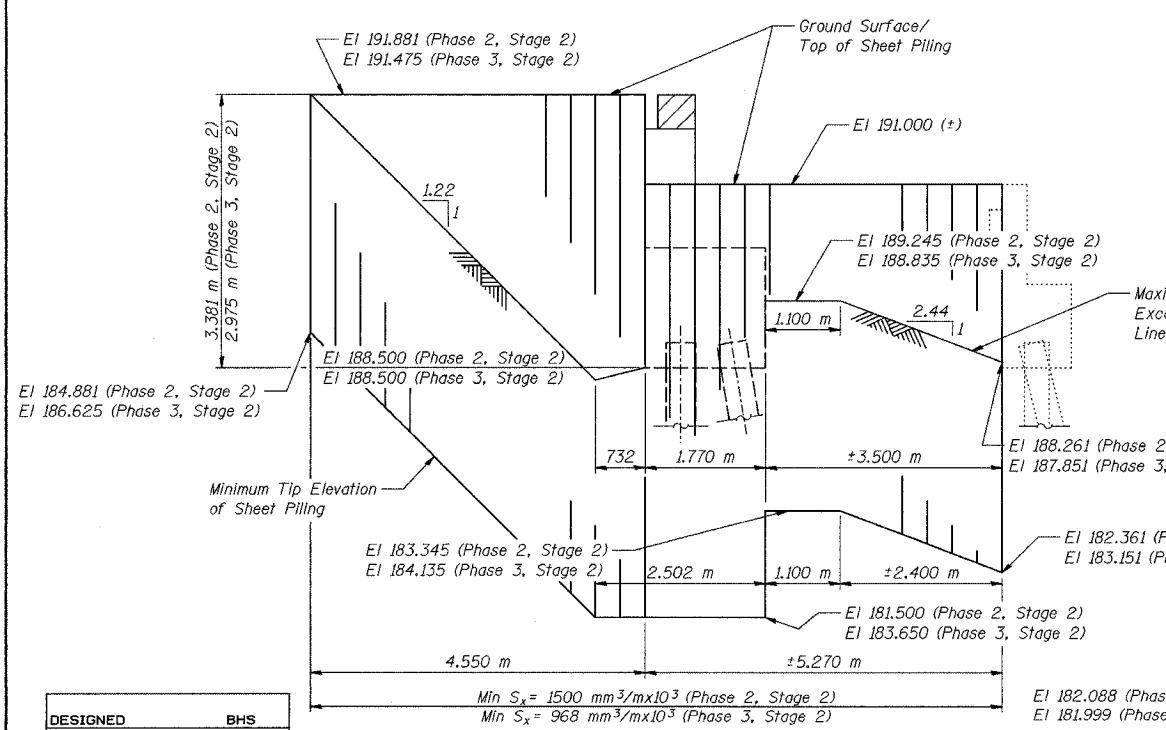
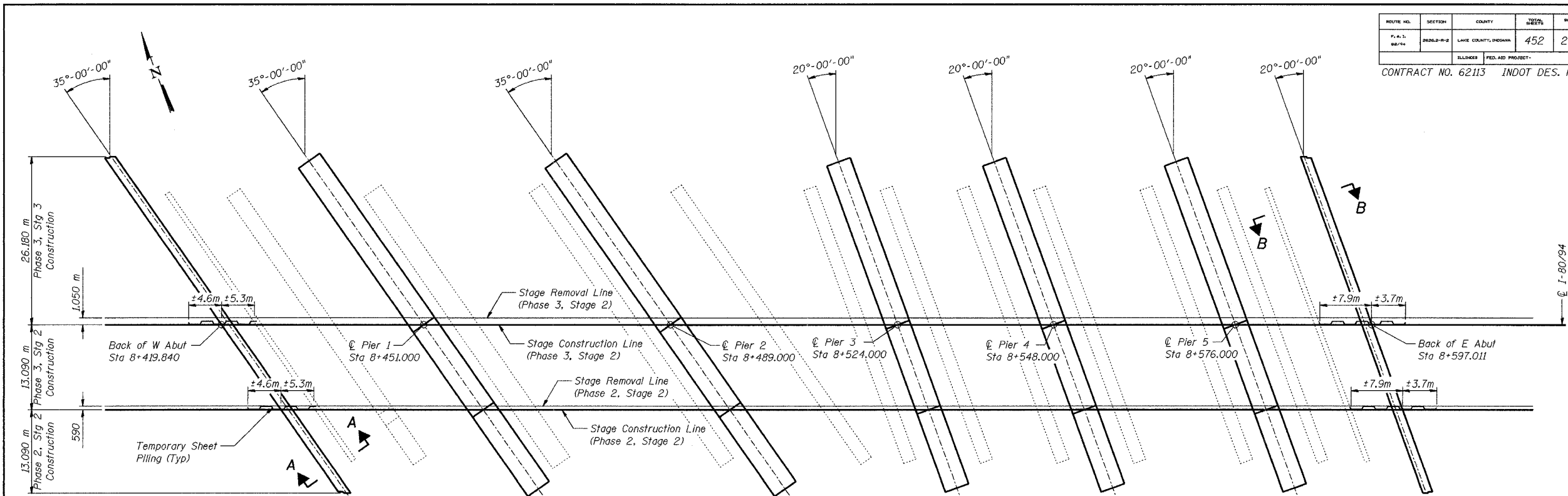
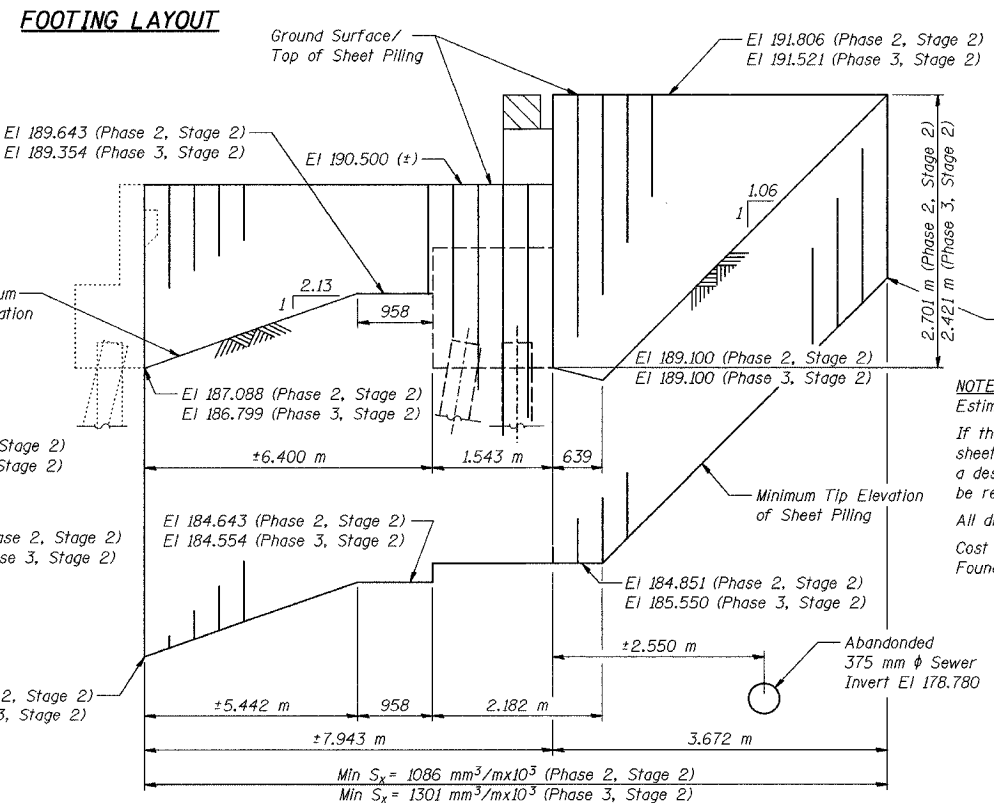


ROUTE NO.	SECTION	COUNTY	SHEETS	SHEET	SHEET NO. S-3 72 SHEETS
P.A.S. 88/94	2626.2-R-1	LAKE COUNTY, INDIANA	452	235	
ILLINOIS FEDERAL PROJECT-					CONTRACT NO. 62113 INDOT DES. NO. 0100987



SECTION A-A
Slope and distances shown along alignment of sheeting (for structure with 35° skew)



SECTION B-B
Slope and distances shown along alignment of sheeting (for structure with 20° skew)

NOTES:
Estimated Area of Temporary Sheet Piling = 161 m²
If the contractor chooses to alter the temporary cantilevered sheet piling design requirements as shown on the plans, a design submittal including plan details and calculations will be required for review and acceptance by the Engineer.
All dimensions are in millimeters (mm) except as noted.
Cost of Temporary Sheet Piling included with Excavation, Foundation, Unclassified.

DESIGNED	BHS
CHECKED	KFA
DRAWN	MJB
CHECKED	GSP

PHASE 3 FOR INFORMATION ONLY

ILLINOIS DEPARTMENT OF TRANSPORTATION
F.A.I. ROUTE 80/94 (BORMAN EXPRESSWAY)
OVER LITTLE CALUMET RIVER & N.I.C.T.D. R.O.W.
STAGE CONSTRUCTION DETAILS -
SUBSTRUCTURE
SECTION 2626.2-R-1
LAKE COUNTY, INDIANA
STATION 8+470.000
STRUCTURE NO. I-80-1-8460 (EB & WB)
DATE 07/04 (016-1003 & 016-1004)

AMERICAN
CONSULTING ENGINEERS