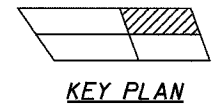
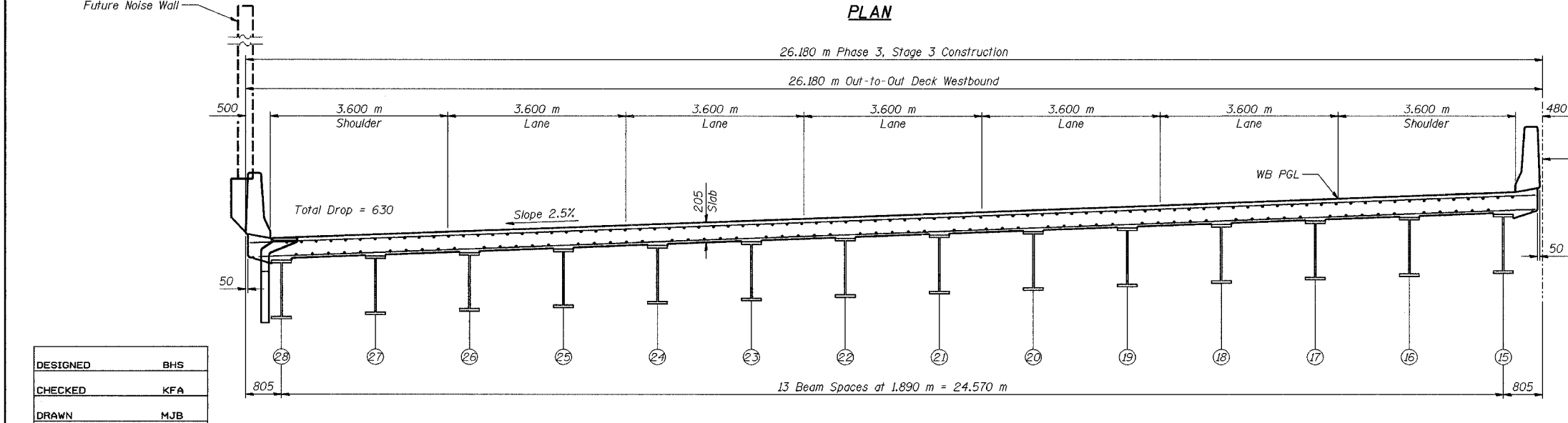
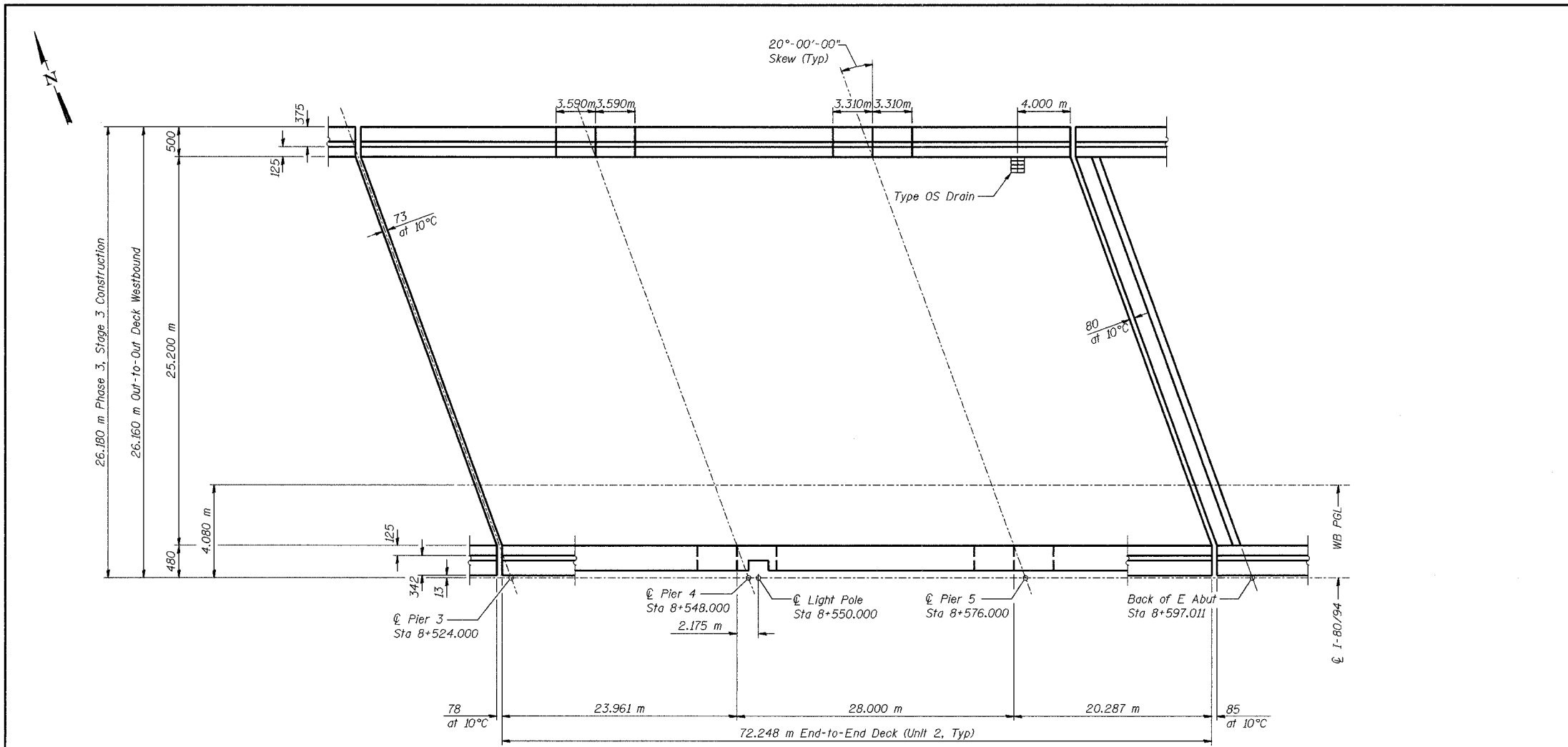


ROUTE NO.	SECTION	COUNTY	TOTAL SHEETS	SHEET NO.	SHEET NO. 5-26
F.A.I. 88-94	2626.2-R-2	LAKE COUNTY, INDIANA	452	258	72 SHEETS
ILLINOIS		FED. AID PROJECT-			

CONTRACT NO. 62113 INDOT DES. NO. 0100987



**MINIMUM BAR LAPS**  
 #15 = 640

DESIGNED	BHS
CHECKED	KFA
DRAWN	MJB
CHECKED	GSP

ILLINOIS DEPARTMENT OF TRANSPORTATION  
 F.A.I. ROUTE 80/94 (BORMAN EXPRESSWAY)  
 OVER LITTLE CALUMET RIVER & N.I.C.T.D. R.O.W.

**DECK PLAN - UNIT 2 WESTBOUND**  
 SECTION 2626.2-R-1  
 LAKE COUNTY, INDIANA  
 STATION 8+470.000  
 STRUCTURE NO. I-80-1-8460 (EB & WB)  
 DATE 07/04 (016-1003 & 016-1004)

**AMERICAN**  
 CONSULTING ENGINEERS

**FOR INFORMATION ONLY**